

HYDRAULIC KICK OFF CONTROL VALVE

INSTRUCTION MANUAL

SAFETY

Pressure Release Detent(Kick out mechanism)

This feature provides a pressure release detent for the handleout position. When the spool is manually placed in the detent position, oil is directed to the A work port (the port closest to the handle). When the pressure in the A port reaches a preset level, the detent will release and the spool will center. The factory setting is 800 PSI. The detent release pressure is non-adjustable.

Relief Valve

An adjustable ball spring relief valve is standard on all Detent Control valves. The standard factory setting is 1,800PSI @ 4 GPM and 120F. Other setting can be specified. The relief pressure is adjusted by removing Hex Plug (Parts No.6), and turning the Adjusting Screw (Part No 4). Turning the Adjusting Screw clockwise will increase the pressure and counter-clockwise will decrease the pressure (a pressure gauge must be installed in the inlet line whenever the relief pressure is adjusted). Adjustable pressure range is 500 PSI to 3,000 PSI. Do not backout adjusting screw to the point it falls out.

IMPROPER MOUNTINAG: always use the proper size fittings. Hook up n&out as noted on the valve body. Do not over torque pipe fittings. (Use liquid pipe sealant only) Mounting surfaces should be flat and care should be taken when tightening mounting bolts. Over-tightened bolts can cause spool bind and casting breakage.

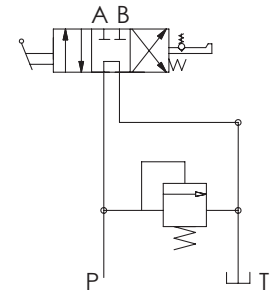
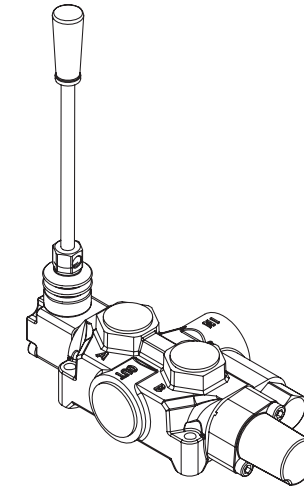
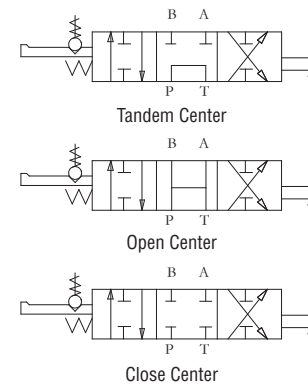
WARNING:

- DO NOT hold the valve handle in the return position. This position is held firm by the detent mechanism until the cylinder retracts and kicks out to neutral position by hydraulic pressure. Holding the valve lever puts undue stress on all components and could cause serious injury.
- DO NOT change or adjust hydraulic system components while under pressure. Serious injury could result.
- DO NOT remove any internal parts from this valve assembly in an attempt to modify its function.
- DO NOT Use Teflon Tape, use Liquid Pipe sealant only
- Make sure all bolts are tightened and torqued to the recommended specification. Bent or broken parts should not be used. Replace immediately. Always use exact replacements. Always protect valve spool from paint overspray.
- Faulty quick disconnects can cause high back pressures and sticking spools. Check quick disconnects periodically to make sure they are functioning properly. If valve spool does not center or appears to stick, do not use!
- Cracked ports are not covered under warranty.

HYDRAULIC KICK OFF CONTROL VALVE

INSTRUCTION MANUAL

AVAILABLE SPOOL TYPE

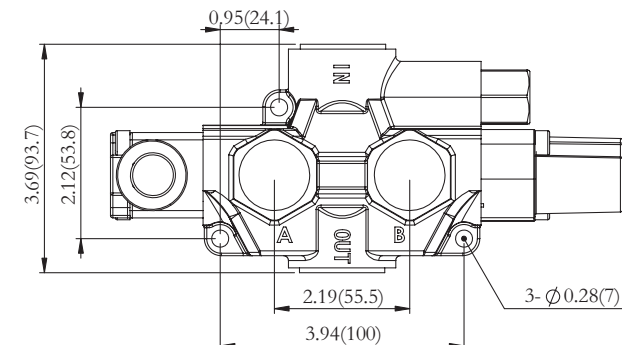


SPECIFICATIONS

MAXIMUM TANK PRESSURE	500 PSI
MAXIMUM OPERATING PRESSURE	3,000 PSI
MAXIMUM OPERATING TEMPERATURE	180°F
MAXIMUM FLOW RATING	18 GPM
RECOMENDED SYSTEM FILTRATION	10 MICRON

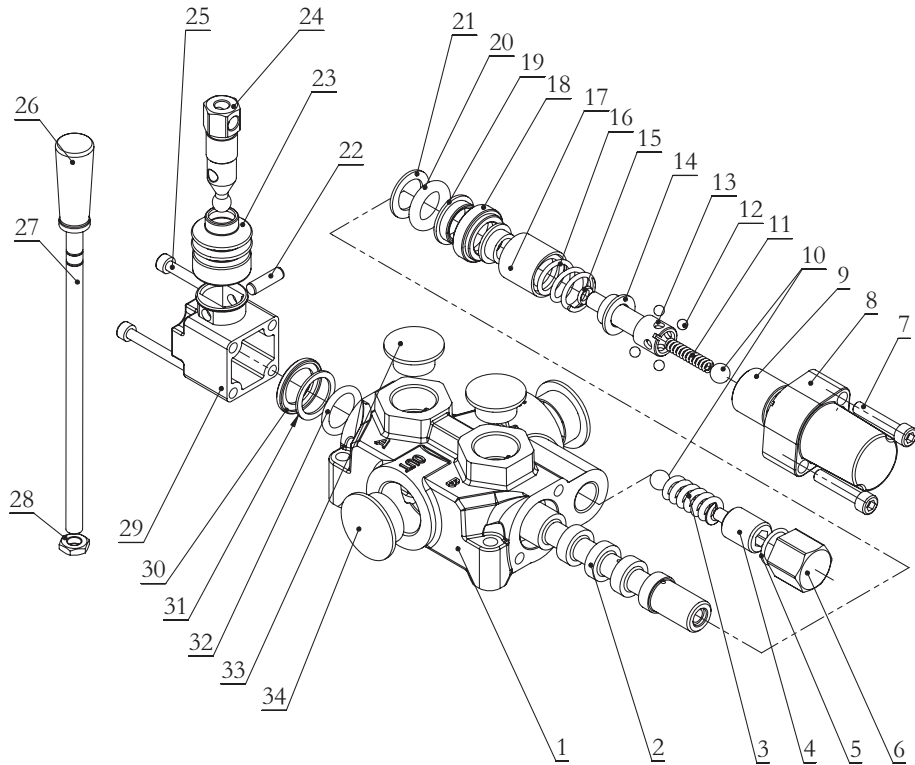
- Inlet/Outlet Ports: 3/4" NPT; 3/4" BSP; #10SAE available
- Working Ports: 1/2" NPT; 3/4" NPT; 1/2" BSP; 3/4" BSP; #8SAE available
- Relief valve adjustable to 3,000 PSI, preset at 1,800 PSI@ 4 GPM and 120F
- Detent release pressure preset at 800-1,000 PSI
- Kick-off pressure is non-adjustable
- Small and compact to fit your log splitter building

INSTALLATION DIMENSION



HYDRAULIC KICK OFF CONTROL VALVE

INSTRUCTION MANUAL

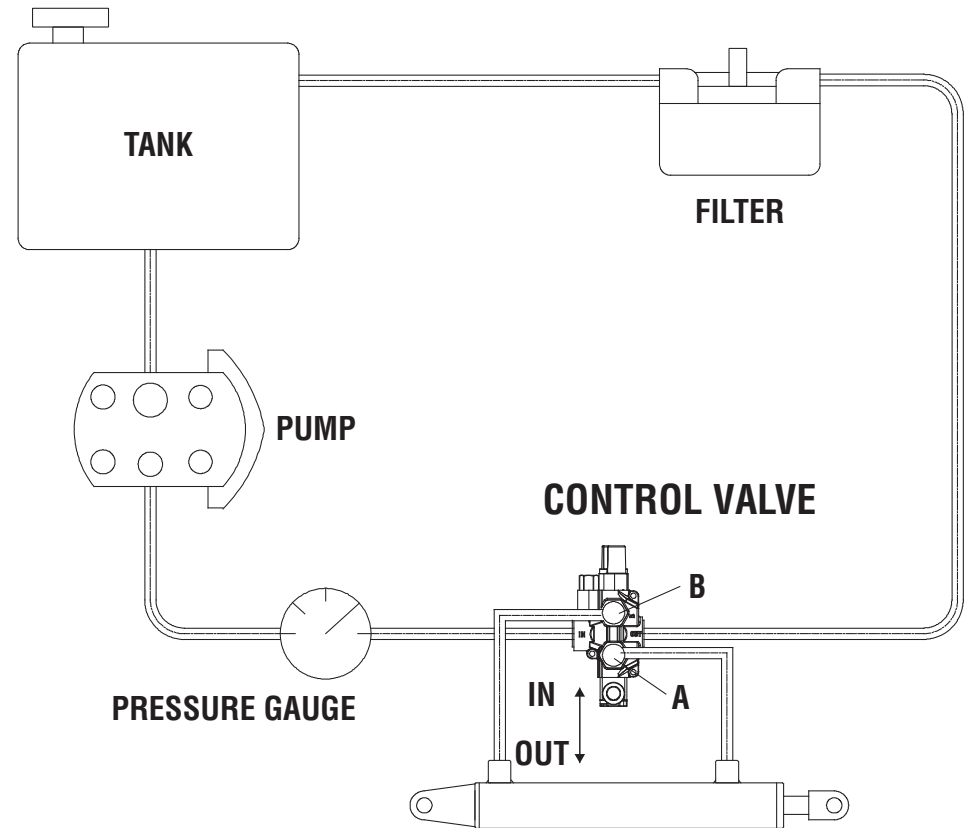


Part No	Q'TY	Description	Part No	Q'TY	Description
34	2	Working Port Plug	19	1	Wshed
33	2	In&out Port Plug	18	1	Wshed
32	1	O-Ring	17	1	Bushing
31	1	Back-up Ring	16	1	Sporing
20	1	O-Ring	14	2	Sporing Sleeve
15	1	O-Ring	13	1	Detent Ball Holder
5	1	O-Ring	12	4	Steel Ball
30	1	Seal Retainer	11	1	Spring
29	1	Detent Cover	10	2	Steel Ball
28	1	Nut	9	1	Detent Sleeve
27	1	Control Lever	8	1	Spring Cover
26	1	Handle Sleeve	7	2	Screw
25	2	Screw	6	1	Hex Plug
24	1	Articulated arm	4	1	Adjusting Screw
23	1	Rubber Sleeve	3	1	Spring
22	1	Pin	2	1	Valve Spool
21	1	Back-upWasher	1	1	Valve Body

HYDRAULIC KICK OFF CONTROL VALVE

INSTRUCTION MANUAL

HYDRAULIC CIRCUIT



INSTALLATIONS

The valve is mounted so the handle is as above shown on. Push handle IN, cylinder extends to split log. Pull handle out, cylinder retract. When the cylinder retracts completely, handle kick back to neutral automatically. The kick-out pressure is non-adjustable preset at 800psi.

- DO NOT connect hoses to cylinder opposite from the diagram or the valve will stay in power extend (splitting) position and could cause serious injury. This includes connecting the input flow to the out port or connecting the A port to the base end of the cylinder.

THE OIL FLOW WHICH STROKES THE CYLINDER IN THE LOGSPLITTING DIRECTION MUST COME FROM THE VALVE PORT AWAY FROM THE HANDLE-("B" PORT). "B" port should always be plumbed to the base end of the cylinder. Oil is supplied to this port by shifting the valve handle IN as noted in the above installations.

- DO NOT connect a return line (low pressure) filter directly to the outlet of the logsplitter valve. Decompression of the cylinder could blow off the filter cartridge, causing an oil spill and possible spraying of operators or bystanders with hot hydraulic oil.