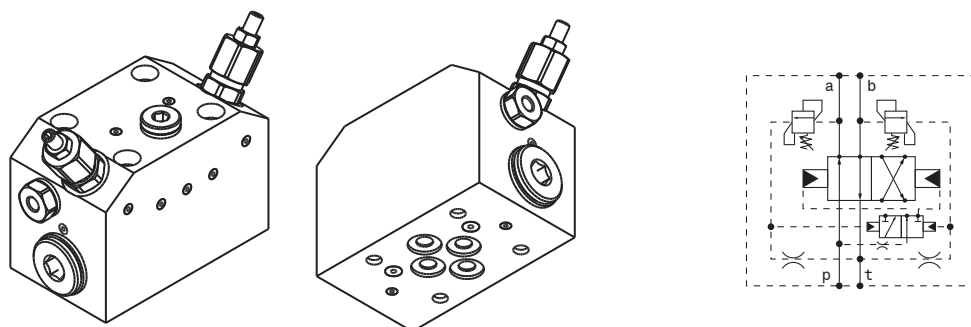


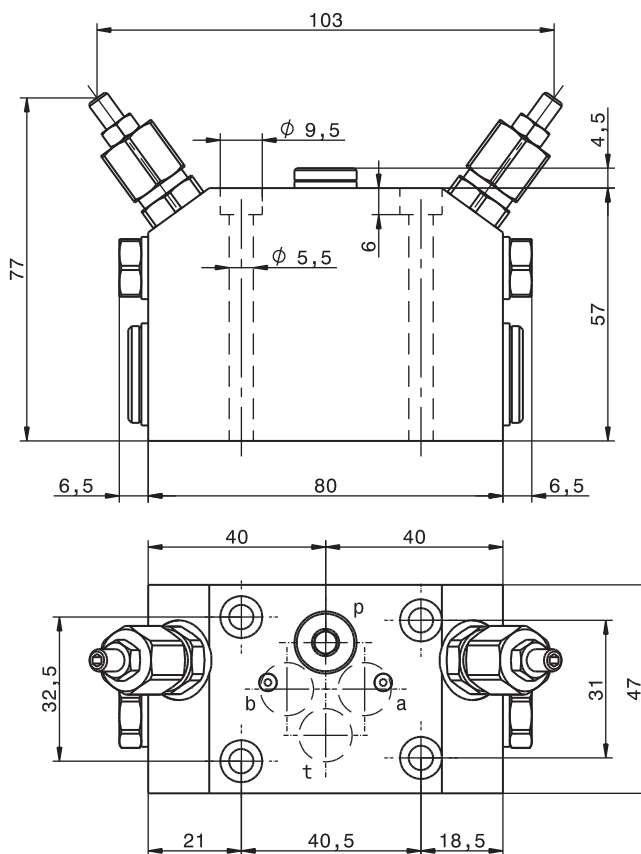
Automatic directional valve - NG6

mod. VAD-F-C3



Cast iron body

Max flow	30 l/min 8 gpm
Max pressure	250 bar 3600 psi
Standard setting	180 bar 2600 psi
Adjustment pressure range	40 ÷ 250 bar 580 ÷ 3600 psi
Min flow	3 l/min 0.8 gpm



Performances and calibrations are carried out by using hydraulic oil with 30 cSt viscosity at 50°C

Recommended viscosity	10 ÷ 420 cSt
Working temperature	-20 ÷ +90 °C
Absolute filtration	25 μ