

SPECIALIST LOG SPLITTER STARTER KITS

Flowfit's Log Splitter Starter Kits are designed to offer a complete and straightforward solution for setting up a reliable log-splitting system. These kits include all the essential components needed to get started, ensuring efficiency and ease of assembly.

Available in three distinct variants: Compact, Evolution, and Classic.

COMPACT



EVOLUTION



CLASSIC



TYPE	INLET/OUTLET PORTS	WORKING PORTS	MAX FLOW (LPM)	MAX PRESSURE (PSI)	RELIEF VALVE	KICK OFF PRESSURE	WEIGHT
COMPACT (ZZ005421)	3/4" BSP	1/2" BSP	81	3265 (225 BAR)	Adjustable, preset at 2,750 PSI (189 BAR)	Non-adjustable, preset at 800 PSI (55 BAR)	2.2Kg
EVOLUTION (LS305NBA42)	3/4" BSP	1/2" BSP	136	3625 (230 BAR)	Adjustable, preset at 2,250 PSI (155 BAR)	Non-adjustable, preset at 800 PSI (55 BAR)	4.5Kg
CLASSIC (LS255BBA43)	3/4" BSP	1/2" BSP	113	2750 (189 BAR)	Adjustable, preset at 2,250 PSI (96 BAR)	Adjustable from 1000-2600 PSI (179 BAR), preset at 1400 PSI (96 BAR)	4.5Kg

AUTO KICK OUT VALVE

- Constructed of high tensile strength gray cast iron
- Built-in adjustable relief valve
- Hard chrome plated spool

RECOMMENDED HYDRAULIC SYSTEM

- Maximum tank pressure: 500 PSI (35 BAR)
- Maximum operating temperature: 180°F
- Recommended system filtration: 10 micron

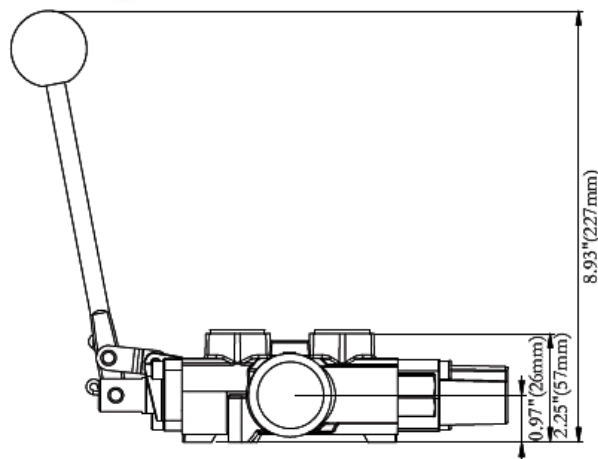
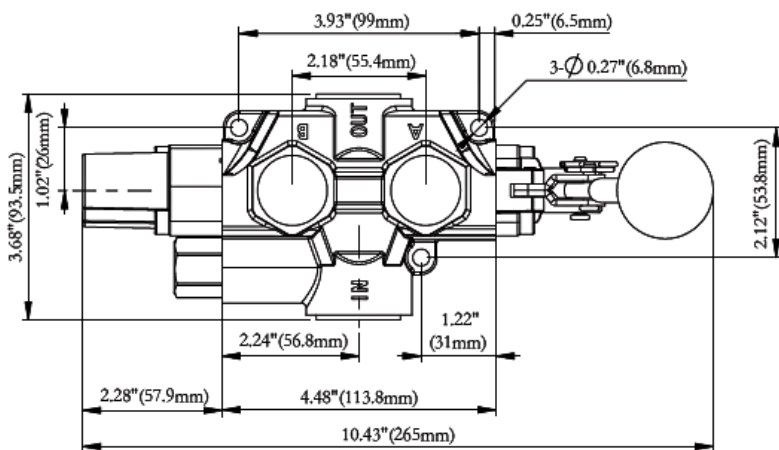
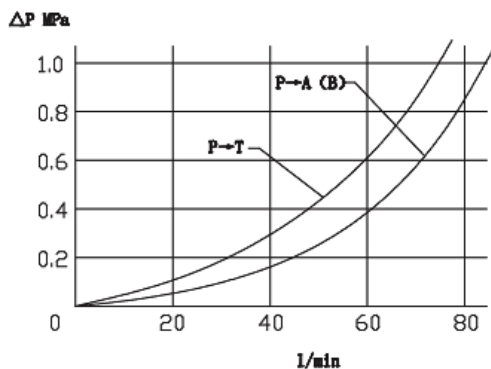
STANDARD FEATURES

- Maximum LPM: 81
- Maximum operating pressure : 3,000 PSI (207 BAR)
- Spool action is spring centre/hydraulic kick-off
- Built-in relief valve preset at 1,800 PSI (124 BAR)
- Kick-off pressure is non-adjustable, preset at 800 PSI (55 BAR)
- Handle can be installed in "up" or "down" position

COMPACT



Pressure Drop



PART NUMBER	INLET/OUTLET PORTS	WORKING PORTS	MAX FLOW (LPM)	MAX PRESSURE (PSI)	RELIEF VALVE	KICK OFF PRESSURE	WEIGHT
ZZ005421	3/4" BSP	1/2" BSP	81	3265 (225 BAR)	Adjustable, preset at 2,750 PSI (189 BAR)	Non-adjustable, preset at 800 PSI (55 BAR)	2.2Kg

AUTO KICK OUT VALVE

- Constructed of high tensile strength gray cast iron
- Built-in adjustable relief valve
- Hard chrome plated spool

RECOMMENDED HYDRAULIC SYSTEM

- Maximum tank pressure: 500 PSI (35 BAR)
- Maximum operating temperature: 180°F
- Recommended system filtration: 10 micron

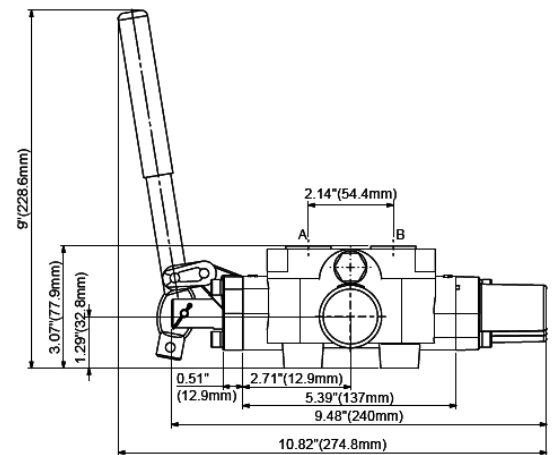
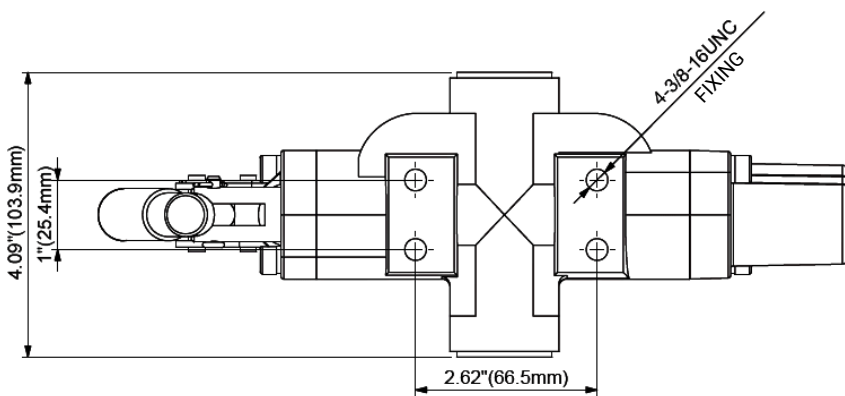
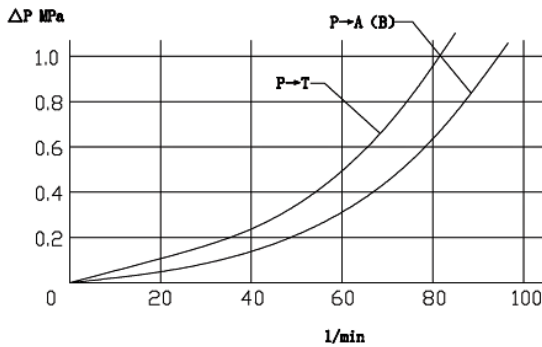
STANDARD FEATURES

- Maximum LPM: 136
- Maximum operating pressure : 3,500 PSI (241 BAR)
- Spool action is spring centre/hydraulic kick-off
- Built-in relief valve preset at 1,800 PSI (124 BAR)
- Kick-off pressure is non-adjustable, preset at 800 PSI (55 BAR)
- Handle can be installed in "up" or "down" position

EVOLUTION



Pressure Drop



PART NUMBER	INLET/OUTLET PORTS	WORKING PORTS	MAX FLOW (LPM)	MAX PRESSURE (PSI)	RELIEF VALVE	KICK OFF PRESSURE	WEIGHT
LS305NBA42	3/4" BSP	1/2" BSP	136	3625 (230 BAR)	Adjustable, preset at 2,250 PSI (155 BAR)	Non-adjustable, preset at 800 PSI (55 BAR)	4.5Kg

AUTO KICK OUT VALVE

- Constructed of high tensile strength gray cast iron
- Built-in adjustable relief valve
- Hard chrome plated spool

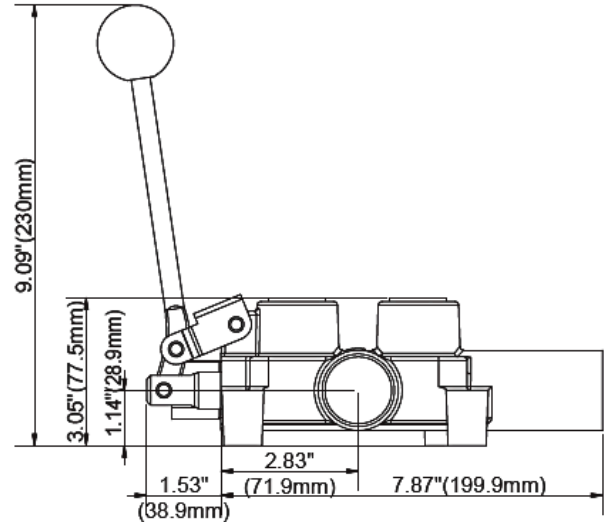
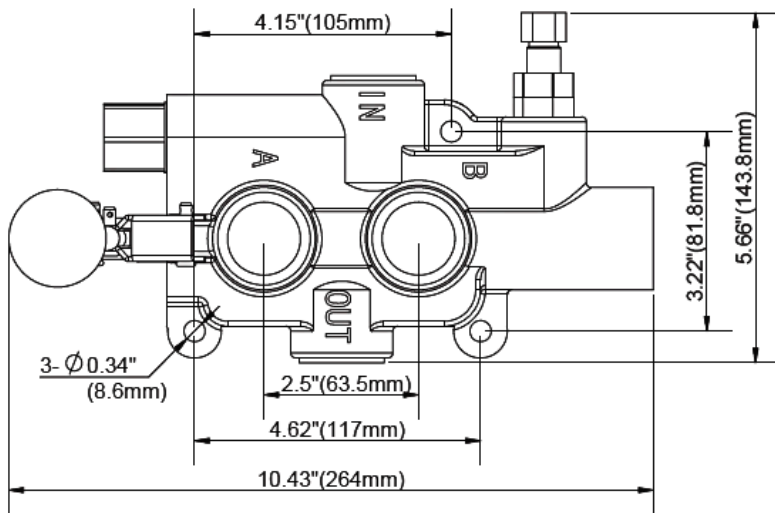
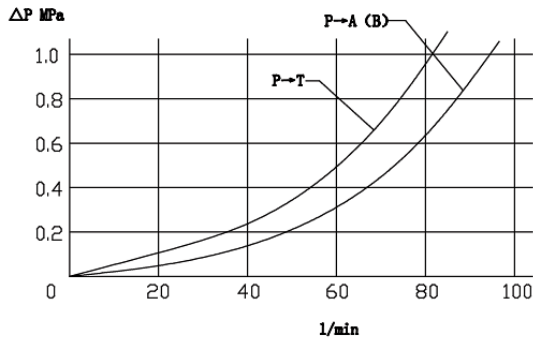
RECOMMENDED HYDRAULIC SYSTEM

- Maximum tank pressure: 500 PSI (35 BAR)
- Maximum operating temperature: 180°F
- Recommended system filtration: 10 micron

STANDARD FEATURES

- Maximum LPM: 113
- Maximum operating pressure : 3,500 PSI (241 BAR)
- Built-in relief valve preset at 2,250 PSI (155 BAR)
- Kick-off pressure adjustable from 1000-2600 psi (179 BAR), at 1400 psi (96 BAR)
- Automatically kicks back to neutral when cylinder completes stroke
- Handle can be installed in "up" or "down" position

Pressure Drop



CLASSIC



PART NUMBER	INLET/OUTLET PORTS	WORKING PORTS	MAX FLOW (LPM)	MAX PRESSURE (PSI)	RELIEF VALVE	KICK OFF PRESSURE	WEIGHT
LS255BBA43	3/4" BSP	1/2" BSP	113	2750 (189 BAR)	Adjustable, preset at 2,250 PSI (96 BAR)	Adjustable from 1000-2600 PSI (179 BAR), preset at 1400 PSI (96 BAR)	4.5Kg

DOUBLE ACTING CYLINDERS

STANDARD



TONNAGE @ 200BAR + 3000RPM	CYLINDER BORE (MM)	STROKE (MM)
7.7	70	400
10	80	500
15.7	100	500
22.5	120	500

SPECIALISED



ADVANTAGES

- REAR BASE PORT FOR EASE OF ACCESS
- REDUCED ROD DIAMETER FOR AXE ENGAGEMENT
- PRE FITTED WITH 4 BOLT MOUNTING FLANGE
- OVERSIZED ROD FOR DURABILITY & FAST RETRACTION
- 3265 MAX PRESSURE / NON-ADJUST KICK OUT

**PAINTED
VERSION
AVAILABLE**

TONNAGE @ 200BAR + 3000RPM	CYLINDER BORE (MM)	STROKE (MM)
7.7	70	550
10	80	650
12.7	90	650

HOSE & FITTINGS



Equipped with Flowfit-branded (unbranded available on request) 2SN/2SC hoses, professionally crimped to match the size of the cylinder.

Each kit includes straight female and 90-degree female fittings at both ends, quick-release couplings, bonded seals, and adaptors for a complete and ready-to-use solution.

STANDARD HYDRAULIC HOSE SAE100R2 AT / DIN EN 853 2SN 2 WIRE HOSE



TUBE : OIL RESISTANT SYNTHETIC RUBBER
REINFORCEMENT : TWO HIGH TENSILE STEEL WIRE LAYERS 2 WIRE
COVER : ABRASION AND WEATHER RESISTANT SYNTHETIC RUBBER
TEMPERATURE RANGE : -40 °C TO +100 °C



Inch	Flowfit No.	Euro Code	DN	HOSE I.D	Hose O.D	Working Pressure	Burst Pressure	Minimum Bend Radius	Weight	Ferrule	Finished Crimp OD
				mm	mm	BAR	BAR	mm	kg/m	Part Number	MM
1/4"	HOSE-2SN-04	04	6	6.4	14.8±0.3	400	1600	100	0.42	FF-FER-04	19
3/8"	HOSE-2SN-06	06	10	9.5	18.7±0.3	330	1320	127	0.6	FF-FER-06	21.8
1/2"	HOSE-2SN-08	08	13	12.7	21.9±0.3	275	1100	178	0.74	FF-FER-08	24.5
3/4"	HOSE-2SN-12	12	19	19	29.0±0.3	215	860	240	1.04	FF-FER-12	32.2
1	HOSE-2SN-16	16	25	25.4	36.7±0.3	165	660	300	1.42	FF-FER-16	41.7

SMOOTH HYDRAULIC HOSE EN 857 2SC 2WIRE HOSE



TUBE : OIL RESISTANT SYNTHETIC RUBBER
REINFORCEMENT : TWO HIGH TENSILE STEEL WIRE LAYERS 2 WIRE
COVER : ABRASION AND WEATHER RESISTANT SYNTHETIC RUBBER
TEMPERATURE RANGE : -40 °C TO +100 °C



Inch	Flowfit No.	Euro Code	DN	HOSE I.D	HOSE O.D	Working Pressure	Burst Pressure	Minimum Bend Radius	Weight	Ferrule	Finished Crimp OD
				mm	mm	BAR	BAR	mm	kg/m	Part Number	MM
1/4"	HOSE-2SC-04	04	6	6.4	13.3+0.4	400	1600	50	0.27	FF-FER-04-2SC	17.6
3/8"	HOSE-2SC-06	06	10	9.5	17.1+0.4	330	1320	65	0.42	FF-FER-06-2SC	20.2
1/2"	HOSE-2SC-08	08	13	12.7	20.7+0.4	275	1100	90	0.52	FF-FER-08-2SC	24.1
3/4"	HOSE-2SC-12	12	19	19	27.7+0.4	215	860	120	0.8	FF-FER-12-2SC	30.8
1	HOSE-2SC-16	16	25	25.4	35.5+0.4	165	660	150	1.22	FF-FER-16-2SC	39.5