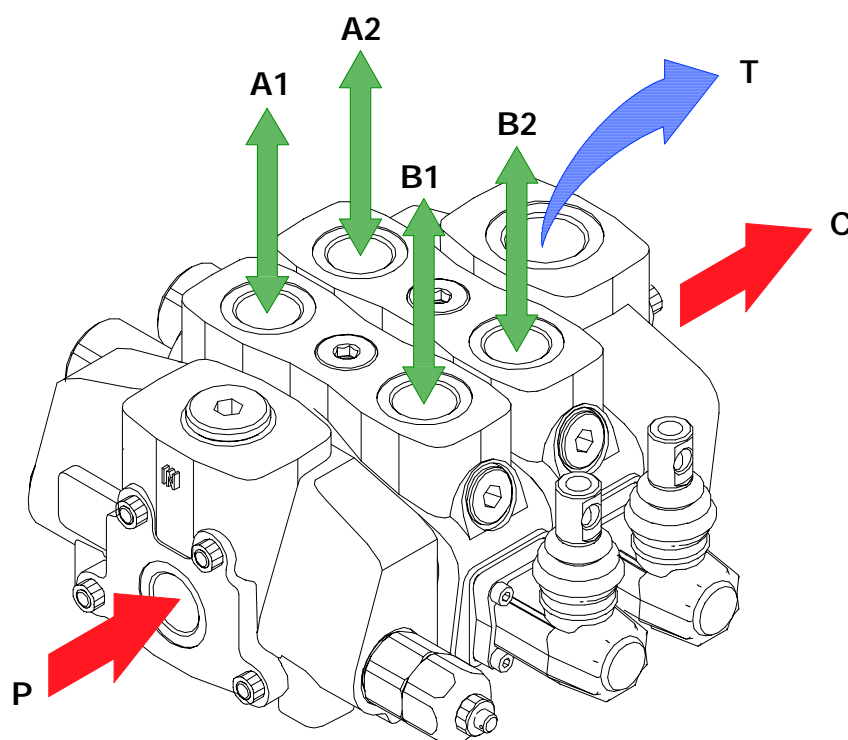


Installation and maintenance

The SD25 valve is assembled and tested as per the technical specification of this catalogue.

Before the final installation on your equipment, follow the below recommendations:

- the valve can be assembled in any position, in order to prevent working sections deformation and spools sticking mount the product on a flat surface;
- in order to prevent the possibility of water entering the lever box and spool control kit, do not use high pressure wash down directly on the valve;
- prior to painting, ensure plastic port plugs are tightly in place.



Carry-over configuration

Fitting tightening torque - Nm / lbft

THREAD TYPE	P and C ports	A and B ports	T port
BSP (ISO 228/1)	G 1	G 1	G 1-1/4
With O-Ring seal	100 / 73.7	100 / 73.7	190 / 140.2
With copper washer	90 / 66.3	90 / 66.3	150 / 110.6
With steel and rubber washer	100 / 73.7	100 / 73.7	190 / 140.2
UN-UNF (ISO 11926-1)	1 5/8-12 UN-2B (SAE 20)	1 5/16-12 UN-2B (SAE 16)	1 5/8-12 UN-2B (SAE 20)
With O-Ring seal	200 / 147.5	150 / 110.6	200 / 147.5

NOTE - These torque are recommended. Assembly tightening torque depends on many factors, including lubrication, coating and surface finish. The manufacturer shall be consulted.