



PUSH-PULL

ISO 7241/A - WITH POPPET PUSH PULL

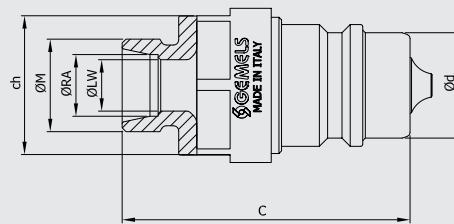
Available other different threads on request

Edition. 21.2

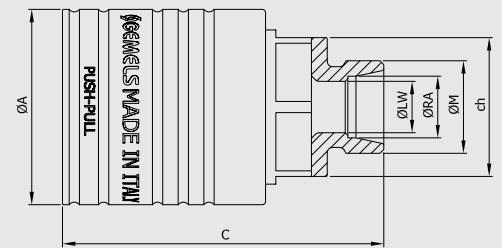
CS Carbon Steel

- Type: Quick Couplings
- Models: ISO 7241/A
PUSH-PULL
- Sizes: from DN10 up to DN25
- Pressure: up to PN420

Male



Female



Available also
in patented version:
ball valve with integrated
quick coupling.



CODE DESCRIPTION STRUCTURE

QC	1/2	F/M	DN12,5	1	B
----	-----	-----	--------	---	---

Type of coupling

ISO 7241A PP

Ends

ISO 1179-1 BSPPASME B1.20.1 NPT	ISO 8434-1-S (DIN 2353)	ISO 8434-1-L (DIN 2353)	ISO 8434-1-S (DIN 2353) BULKHEAD	ISO 8434-1-L (DIN 2353) BULKHEAD
G3/8	6L	12S	8L	10S
G1/2	N 1/2	16S	10L	12S
G3/4	10L		12L	16S
G1	12L		15L	20S
	15L		18L	
	18L		22L	
	22L		28L	
	28L			

MALE

FEMALE

DN/ISO

10
12,5
20
25

Body Material

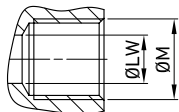
● 1 = 1,0737

Seal material

B = NBR E = FKM*

*On request

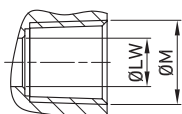
- Cups
- Plugs



Male type see ISO 7241/A

QUICK COUPLINGS PUSH-PULL (male / female)
FEMALE THREAD ISO 1179-1 BSPP
 Interchangeable according to ISO 7241-A

TYPE	DN	PN	ØA	C	Ød	ch	ØM	WEIGHT	ITEM CODE
QC PP G 3/8 FEMALE	10	MPa 42	mm 32	60,5	-	24	G3/8	kg 0,26	NC12G020000
		Psi 6090	inch 1,26	2,38	-	0,94		lb 0,57	
QC PP G 1/2 FEMALE	10	MPa 42	mm 32	63	-	24	G1/2	kg 0,28	NC12G020001
		Psi 6090	inch 1,26	2,48	-	0,94		lb 0,62	
QC PP G 3/8 FEMALE	12,5	MPa 35	mm 38	66	-	27	G3/8	kg 0,29	NC12G030000
		Psi 5075	inch 1,50	2,60	-	1,06		lb 0,64	
QC PP G 1/2 FEMALE	12,5	MPa 35	mm 38	68,5	-	27	G1/2	kg 0,31	NC12G030001
		Psi 5075	inch 1,50	2,70	-	1,06		lb 0,68	
QC PP G 3/4 FEMALE	19	MPa 25	mm 47	85,6	-	37	G3/4	kg 0,59	NC12G040000
		Psi 3625	inch 1,85	3,37	-	1,46		lb 1,30	
QC PP G 3/4 FEMALE	25	MPa 25	mm 55	102	-	41	G3/4	kg 0,94	NC12G050000
		Psi 3625	inch 2,17	4,02	-	1,61		lb 2,07	
QC PP G 1 FEMALE	25	MPa 25	mm 55	104	-	41	G1	kg 0,92	NC12G050001
		Psi 3625	inch 2,17	4,09	-	1,61		lb 2,03	

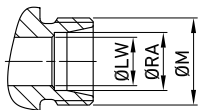
 CS
Carbon
Steel


Male type see ISO 7241/A

QUICK COUPLINGS ISO 7241/A (male / female)
FEMALE THREAD ASME B1.20.1 NPT WITH POPPET

TYPE	DN	PN	ØA	C	Ød	ch	ØM	WEIGHT	ITEM CODE
QC PP N 1/2 FEMALE	12,5	MPa 35	mm 38	72	-	27	N1/2	kg 0,19	NC12N030001
		Psi 5075	inch 1,50	2,83	-	1,06		lb 0,42	

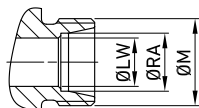
 CS
Carbon
Steel



QUICK COUPLINGS PUSH-PULL (male / female)
MALE THREAD METRIC ISO 8434-1-S (DIN 2353)
 Interchangeable according to ISO 7241-A

CS
Carbon
Steel

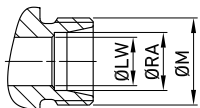
TYPE	DN	PN	ØA	C	Ød	ch	ØM	ØLW	ØRA	WEIGHT	ITEM CODE	
QC PP 8S MALE	10	MPa 42	mm -	52	17,3	24	M16X1,5	5	8	kg 0,12	NC11H020000	
		Psi 6090	inch -	2,05	0,68	0,94		0,20	0,31	lb 0,26		
QC PP 8S FEMALE		MPa 42	mm 32	63	-	24	M16X1,5	5	8	kg 0,321	NC12H020000	
		Psi 6090	inch 1,26	2,48	-	0,94		0,20	0,31	lb 0,71		
QC PP 10S MALE		MPa 42	mm -	52	17,3	24	M18X1,5	10	7	kg 0,13	NC11H020001	
		Psi 6090	inch -	2,05	0,68	0,94		0,39	0,28	lb 0,29		
QC PP 10S FEMALE		MPa 42	mm 32	63	-	24	M18X1,5	10	7	kg 0,324	NC12H020001	
		Psi 6090	inch 1,26	2,48	-	0,94		0,39	0,28	lb 0,71		
QC PP 12S MALE		12,5	MPa 35	mm -	57	20,5	27	M20X1,5	8	12	kg 0,135	NC11H030000
			Psi 5075	inch -	2,24	0,81	1,06		0,31	0,47	lb 0,30	
QC PP 12S FEMALE			MPa 35	mm 38	64,5	-	27	M20X1,5	8	12	kg 0,28	NC12H030000
			Psi 5075	inch 1,50	2,54	-	1,06		0,31	0,47	lb 0,62	
QC PP 14S MALE	MPa 35		mm -	59	20,5	27	M22X1,5	8	14	kg 0,45	NC11H030001	
	Psi 5075		inch -	2,32	0,81	1,06		0,31	0,55	lb 0,99		
QC PP 14S FEMALE	MPa 35		mm 38	66,5	-	27	M22X1,5	8	14	kg 0,281	NC12H030001	
	Psi 5075		inch 1,50	2,62	-	1,06		0,31	0,55	lb 0,62		
QC PP 16S MALE	MPa 35		mm -	59	20,5	27	M24X1,5	12	16	kg 0,157	NC11H030002	
	Psi 5075		inch -	2,32	0,81	1,06		0,47	0,63	lb 0,35		
QC PP 16S FEMALE	MPa 35		mm 38	66,5	-	27	M24X1,5	12	16	kg 0,284	NC12H030002	
	Psi 5075		inch 1,50	2,62	-	1,06		0,47	0,63	lb 0,63		
QC PP 16S MALE	20	MPa 25	mm -	64	29	34	M24X1,5	12	16	kg 0,251	NC11H040000	
		Psi 3625	inch -	2,52	1,14	1,34		0,47	0,63	lb 0,55		
QC PP 16S FEMALE		MPa 25	mm 47	79,5	-	34	M24X1,5	12	16	kg 0,51	NC12H040000	
		Psi 3625	inch 1,85	3,13	-	1,34		0,47	0,63	lb 1,12		
QC PP 20S MALE		MPa 25	mm -	66	29	34	M30X2	16	20	kg 0,26	NC11H040001	
		Psi 3625	inch -	2,60	1,14	1,34		0,63	0,79	lb 0,57		
QC PP 20S FEMALE		MPa 25	mm 47	81,5	-	34	M30X2	16	20	kg 0,53	NC12H040001	
		Psi 3625	inch 1,85	3,21	-	1,34		0,63	0,79	lb 1,17		
QC PP 20S MALE		MPa 25	mm -	88,5	34,34	41	M30X2	12	16	kg 0,4	NC11H050000	
		Psi 3625	inch -	3,48	1,35	1,61		0,47	0,63	lb 0,88		
QC PP 20S FEMALE		MPa 25	mm 55	104	-	41	M30X2	12	16	kg 0,11	NC12H050000	
		Psi 3625	inch 2,17	4,09	-	1,61		0,47	0,63	lb 0,24		
QC PP 25S MALE	MPa 25	mm -	90,5	34,34	41	M36X2	16	20	kg 0,56	NC11H050001		
	Psi 3625	inch -	3,56	1,35	1,61		0,63	0,79	lb 1,23			
QC PP 25S FEMALE	MPa 25	mm 55	106	-	41	M36X2	16	20	kg 0,123	NC12H050001		
	Psi 3625	inch 2,17	4,17	-	1,61		0,63	0,79	lb 0,27			
QC PP 30S MALE	25	MPa 25	mm -	92,5	34,34	46	M42X2	12	16	kg 0,6	NC11H050002	
		Psi 3625	inch -	3,64	1,35	1,81		0,47	0,63	lb 1,32		
QC PP 30S FEMALE		MPa 25	mm 55	108	-	46	M42X2	12	16	kg 0,25	NC12H050002	
		Psi 3625	inch 2,17	4,25	-	1,81		0,47	0,63	lb 0,55		



QUICK COUPLINGS PUSH-PULL (male / female) MALE THREAD METRIC ISO 8434-1-L (DIN 2353) Interchangeable according to ISO 7241-A

CS
Carbon
Steel

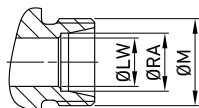
TYPE	DN	PN	ØA	C	Ød	ch	ØM	ØLW	ØRA	WEIGHT	ITEM CODE
QC PP 6L MALE	10	MPa 42	mm -	50	17,3	24	M12X1,5	4	6	kg 0,07	NC11L020002
		Psi 6090	inch -	1,97	0,68	0,94		0,16	0,24	lb 0,15	
QC PP 6L FEMALE		MPa 42	mm 32	61	-	24	M12X1,5	4	6	kg 0,25	NC12L020002
		Psi 6090	inch 1,26	2,40	-	0,94		0,16	0,24	lb 0,55	
QC PP 8L MALE		MPa 42	mm -	50	17,3	24	M14X1,5	6	8	kg 0,13	NC11L020000
		Psi 6090	inch -	1,97	0,68	0,94		0,24	0,31	lb 0,29	
QC PP 8L FEMALE		MPa 42	mm 32	61	-	24	M14X1,5	6	8	kg 0,253	NC12L020000
		Psi 6090	inch 1,26	2,40	-	0,94		0,24	0,31	lb 0,56	
QC PP 10L MALE		MPa 42	mm -	51	17,3	24	M16X1,5	8	10	kg 0,15	NC11L020001
		Psi 6090	inch -	2,01	0,68	0,94		0,31	0,39	lb 0,33	
QC PP 10L FEMALE		MPa 42	mm 32	62	-	24	M16X1,5	8	10	kg 0,255	NC12L020001
		Psi 6090	inch 1,26	2,44	-	0,94		0,31	0,39	lb 0,56	
QC PP 10L MALE		MPa 35	mm -	56	20,5	27	M16X1,5	8	10	kg 0,16	NC11L030000
		Psi 5075	inch -	2,20	0,81	1,06		0,31	0,39	lb 0,35	
QC PP 10L FEMALE		MPa 35	mm 38	63,5	-	27	M16X1,5	8	10	kg 0,24	NC12L030000
		Psi 5075	inch 1,50	2,50	-	1,06		0,31	0,39	lb 0,53	
QC PP 12L MALE		MPa 35	mm -	56	20,5	27	M18X1,5	10	12	kg 0,169	NC11L030001
		Psi 5075	inch -	2,20	0,81	1,06		0,39	0,47	lb 0,37	
QC PP 12L FEMALE		MPa 35	mm 38	63,5	-	27	M18X1,5	10	12	kg 0,254	NC12L030001
		Psi 5075	inch 1,50	2,50	-	1,06		0,39	0,47	lb 0,56	
QC PP 15L MALE		MPa 35	mm -	57	20,5	27	M22X1,5	12	15	kg 0,17	NC11L030002
		Psi 5075	inch -	2,24	0,81	1,06		0,47	0,59	lb 0,37	
QC PP 15L FEMALE		MPa 35	mm 38	64,5	-	27	M22X1,5	12	15	kg 0,26	NC12L030002
		Psi 5075	inch 1,50	2,54	-	1,06		0,47	0,59	lb 0,57	
QC PP 18L MALE	MPa 35	mm -	57	20,5	27	M26X1,5	15	18	kg 0,179	NC11L030003	
	Psi 5075	inch -	2,24	0,81	1,06		0,59	0,71	lb 0,39		
QC PP 18L FEMALE	MPa 35	mm 38	64,5	-	27	M26X1,5	15	18	kg 0,263	NC12L030003	
	Psi 5075	inch 1,50	2,54	-	1,06		0,59	0,71	lb 0,58		
QC PP 18L MALE	MPa 25	mm -	62	29,1	34	M26X1,5	15	18	kg 0,25	NC11L040000	
	Psi 3625	inch -	2,44	1,15	1,34		0,59	0,71	lb 0,55		
QC PP 18L FEMALE	MPa 25	mm 47	77,5	-	34	M26X1,5	15	18	kg 0,52	NC12L040000	
	Psi 3625	inch 1,85	3,05	-	1,34		0,59	0,71	lb 1,15		
QC PP 22L MALE	MPa 25	mm -	64	29,1	34	M30X2	19	22	kg 0,27	NC11L040001	
	Psi 3625	inch -	2,52	1,15	1,34		0,75	0,87	lb 0,60		
QC PP 22L FEMALE	MPa 25	mm 47	79,5	-	34	M30X2	19	22	kg 0,55	NC12L040001	
	Psi 3625	inch 1,85	3,13	-	1,34		0,75	0,87	lb 1,21		
QC PP 22L MALE	MPa 25	mm -	86,5	34,34	41	M30X2	19	22	kg 0,4	NC11L050000	
	Psi 3625	inch -	3,41	1,35	1,61		0,75	0,87	lb 0,88		
QC PP 22L FEMALE	MPa 25	mm 55	102	-	41	M30X2	19	22	kg 0,89	NC12L050000	
	Psi 3625	inch 2,17	4,02	-	1,61		0,75	0,87	lb 1,96		
QC PP 28L MALE	MPa 25	mm -	86,5	34,34	41	M36X2	24	28	kg 0,45	NC11L050001	
	Psi 3625	inch -	3,41	1,35	1,61		0,94	1,10	lb 0,99		
QC PP 28L FEMALE	MPa 25	mm 55	102	-	41	M36X2	24	28	kg 0,895	NC12L050001	
	Psi 3625	inch 2,17	4,02	-	1,61		0,94	1,10	lb 1,97		
QC PP 35L MALE	MPa 25	mm -	88,5	34,34	46	M45X2	30	35	kg 0,5	NC11L050002	
	Psi 3625	inch -	3,48	1,35	1,81		1,18	1,38	lb 1,10		
QC PP 35L FEMALE	MPa 25	mm 55	104	-	46	M45X2	30	35	kg 0,9	NC12L050002	
	Psi 3625	inch 2,17	4,09	-	1,81		1,18	1,38	lb 1,98		



QUICK COUPLINGS PUSH-PULL (male / female)
MALE THREAD METRIC ISO 8434-1-S (DIN 2353) BULKHEAD
 Interchangeable according to ISO 7241-A

CS
Carbon
Steel

TYPE	DN	PN	ØA	C	Ød	ch	ØM	ØLW	ØRA	WEIGHT	ITEM CODE			
QC PP 10S BK MALE	12,5	MPa 35	mm -	72	20,5	27	M18X1,5	7	10	kg 0,169	NC111030000			
		Psi 5075	inch -	2,83	0,81	1,06		0,28	0,39	lb 0,37				
QC PP 10S BK FEMALE			MPa 35	mm 38	79,5	-	27	M18X1,5	7	10	kg 0,3	NC121030000		
		Psi 5075	inch 1,50	3,13	-	1,06	0,28		0,39	lb 0,66				
QC PP 12S BK MALE			MPa 35	mm -	72	20,5	27	M20X1,5	8	12	kg 0,16	NC111030001		
		Psi 5075	inch -	2,83	0,81	1,06	0,31		0,47	lb 0,35				
QC PP 12S BK FEMALE			MPa 35	mm 38	79,5	-	27	M20X1,5	8	12	kg 0,32	NC121030001		
		Psi 5075	inch 1,50	3,13	-	1,06	0,31		0,47	lb 0,71				
QC PP 16S BK MALE			MPa 35	mm -	74	20,5	27	M24X1,5	12	16	kg 0,172	NC111030002		
		Psi 5075	inch -	2,91	0,81	1,06	0,47		0,63	lb 0,38				
QC PP 16S BK FEMALE			MPa 35	mm 38	81,5	-	27	M24X1,5	12	16	kg 0,33	NC121030002		
		Psi 5075	inch 1,50	3,21	-	1,06	0,47		0,63	lb 0,73				
QC PP 16S BK MALE		20	MPa 25	mm -	79	29,1	34	M24X1,5	12	16	kg 0,27	NC111040000		
			Psi 3625	inch -	3,11	1,15	1,34		0,47	0,63	lb 0,60			
QC PP 16S BK FEMALE				MPa 25	mm 47	94,5	-	34	M24X1,5	12	16	kg 0,57	NC121040000	
			Psi 3625	inch 1,85	3,72	-	1,34	0,47		0,63	lb 1,26			
QC PP 20S BK MALE				MPa 25	mm -	77	29,1	34	M30X2	16	20	kg 0,29	NC111040001	
			Psi 3625	inch -	3,03	1,15	1,34	0,63		0,79	lb 0,64			
QC PP 20S BK FEMALE				MPa 25	mm 47	92,5	-	34	M30X2	16	20	kg 0,6	NC121040001	
			Psi 3625	inch 1,85	3,64	-	1,34	0,63		0,79	lb 1,32			
QC PP 20S BK MALE			25	MPa 25	mm -	110,5	34,34	41	M30X2	16	20	kg 0,52	NC111050000	
				Psi 3625	inch -	4,35	1,35	1,61		0,63	0,79	lb 1,15		
QC PP 20S BK FEMALE					MPa 25	mm 55	126	-	41	M30X2	16	20	kg 1,023	NC121050000
				Psi 3625	inch 2,17	4,96	-	1,61	0,63		0,79	lb 2,26		
QC PP 25S BK MALE		MPa 25		mm -	110,5	34,34	41	M36X2	20	25	kg 0,55	NC111050001		
	Psi 3625	inch -		4,35	1,35	1,61	0,79		0,98	lb 1,21				
QC PP 25S BK FEMALE		MPa 25		mm 55	126	-	41	M36X2	20	25	kg 1,12	NC121050001		
	Psi 3625	inch 2,17		4,96	-	1,61	0,79		0,98	lb 2,47				
QC PP 30S BK MALE		MPa 25		mm -	112,5	34,34	41	M42X2	25	30	kg 0,62	NC111050002		
	Psi 3625	inch -		4,43	1,35	1,61	0,98		1,18	lb 1,37				
QC PP 30S BK FEMALE		MPa 25		mm 55	128	-	41	M42X2	25	30	kg 1,22	NC121050002		
	Psi 3625	inch 2,17		5,04	-	1,61	0,98		1,18	lb 2,69				



QUICK COUPLINGS PUSH-PULL (male / female) MALE THREAD METRIC ISO 8434-1-L (DIN 2353) BULKHEAD Interchangeable according to ISO 7241-A

CS
Carbon
Steel

TYPE	DN	PN	ØA	C	Ød	ch	ØM	ØLW	ØRA	WEIGHT	ITEM CODE
QC PP 8L BK MALE	10	MPa 42	mm -	65	17,3	24	M14X1,5	6	8	kg 0,12	NC11M020000
		Psi 6090	inch -	2,56	0,68	0,94		0,24	0,31	lb 0,26	
QC PP 8L BK FEMALE		MPa 42	mm 32	76	-	24	M14X1,5	6	8	kg 0,321	NC12M020000
		Psi 6090	inch 1,26	2,99	-	0,94		0,24	0,31	lb 0,71	
QC PP 10L BK MALE		MPa 42	mm -	66	17,3	24	M16X1,5	8	10	kg 0,145	NC11M020001
		Psi 6090	inch -	2,60	0,68	0,94		0,31	0,39	lb 0,32	
QC PP 10L BK FEMALE		MPa 42	mm 32	77	-	24	M16X1,5	8	10	kg 0,33	NC12M020001
		Psi 6090	inch 1,26	3,03	-	0,94		0,31	0,39	lb 0,73	
QC PP 10L BK MALE		MPa 35	mm -	71	20,5	27	M16X1,5	8	10	kg 0,149	NC11M030000
		Psi 5075	inch -	2,80	0,81	1,06		0,31	0,39	lb 0,33	
QC PP 10L BK FEMALE		MPa 35	mm 38	78,5	-	27	M16X1,5	8	10	kg 0,3	NC12M030000
		Psi 5075	inch 1,50	3,09	-	1,06		0,31	0,39	lb 0,66	
QC PP 12L BK MALE	MPa 35	mm -	72	20,5	27	M18X1,5	10	12	kg 0,15	NC11M030001	
	Psi 5075	inch -	2,83	0,81	1,06		0,39	0,47	lb 0,33		
QC PP 12L BK FEMALE	MPa 35	mm 38	79,5	-	27	M18X1,5	10	12	kg 0,3	NC12M030001	
	Psi 5075	inch 1,50	3,13	-	1,06		0,39	0,47	lb 0,66		
QC PP 15L BK MALE	MPa 35	mm -	72	20,5	27	M22X1,5	12	15	kg 0,16	NC11M030002	
	Psi 5075	inch -	2,83	0,81	1,06		0,47	0,59	lb 0,35		
QC PP 15L BK FEMALE	MPa 35	mm 38	79,5	-	27	M22X1,5	12	15	kg 0,31	NC12M030002	
	Psi 5075	inch 1,50	3,13	-	1,06		0,47	0,59	lb 0,68		
QC PP 18L BK MALE	MPa 35	mm -	72	20,5	27	M26X1,5	15	18	kg 0,175	NC11M030003	
	Psi 5075	inch -	2,83	0,81	1,06		0,59	0,71	lb 0,39		
QC PP 18L BK FEMALE	MPa 35	mm 38	79,5	-	27	M26X1,5	15	18	kg 0,33	NC12M030003	
	Psi 5075	inch 1,50	3,13	-	1,06		0,59	0,71	lb 0,73		
QC PP 15L BK MALE	MPa 25	mm -	77	29,1	34	M22X1,5	12	15	kg 0,252	NC11M040000	
	Psi 3625	inch -	3,03	1,15	1,34		0,47	0,59	lb 0,56		
QC PP 15L BK FEMALE	MPa 25	mm 47	92,5	-	34	M22X1,5	12	15	kg 0,55	NC12M040000	
	Psi 3625	inch 1,85	3,64	-	1,34		0,47	0,59	lb 1,21		
QC PP 18L BK MALE	MPa 25	mm -	77	29,1	34	M26X1,5	15	18	kg 0,246	NC11M040002	
	Psi 3625	inch -	3,03	1,15	1,34		0,59	0,71	lb 0,54		
QC PP 18L BK FEMALE	MPa 25	mm 47	92,5	-	34	M26X1,5	15	18	kg 0,56	NC12M040002	
	Psi 3625	inch 1,85	3,64	-	1,34		0,59	0,71	lb 1,23		
QC PP 22L BK MALE	MPa 25	mm -	84	29,1	34	M30X2	19	22	kg 0,298	NC11M040001	
	Psi 3625	inch -	3,31	1,15	1,34		0,75	0,87	lb 0,66		
QC PP 22L BK FEMALE	MPa 25	mm 47	99,5	-	34	M30X2	19	22	kg 0,6	NC12M040001	
	Psi 3625	inch 1,85	3,92	-	1,34		0,75	0,87	lb 1,32		
QC PP 22L BK MALE	MPa 25	mm -	106,5	34,34	41	M30X2	19	22	kg 0,55	NC11M050000	
	Psi 3625	inch -	4,19	1,35	1,61		0,75	0,87	lb 1,21		
QC PP 22L BK FEMALE	MPa 25	mm 55	122	-	41	M30X2	19	22	kg 0,98	NC12M050000	
	Psi 3625	inch 2,17	4,80	-	1,61		0,75	0,87	lb 2,16		
QC PP 28L BK MALE	MPa 25	mm -	106,5	34,34	41	M36X2	24	28	kg 0,569	NC11M050001	
	Psi 3625	inch -	4,19	1,35	1,61		0,94	1,10	lb 1,25		
QC PP 28L BK FEMALE	MPa 25	mm 55	122	-	41	M36X2	24	28	kg 1	NC12M050001	
	Psi 3625	inch 2,17	4,80	-	1,61		0,94	1,10	lb 2,20		



ISO A

ISO 7241/A - WITH POPPET

Available PL version, free flow (without valve) on both sides

Edition. 21.2

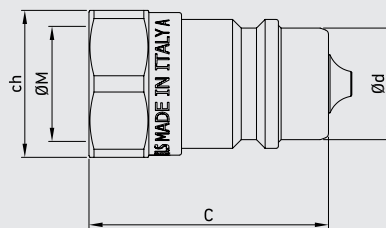
CS Carbon Steel

- Type: Quick Couplings
- Models: ISO 7241/A
- Sizes: from DN6 to DN50
- Pressure: up to PN420

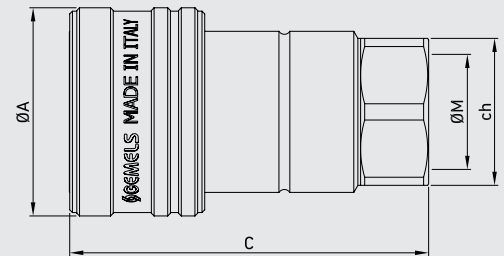
SS Stainless Steel

- Type: Quick Couplings
- Models: ISO 7241/A
- Sizes: from DN6 to DN50
- Pressure: up to PN300

Male



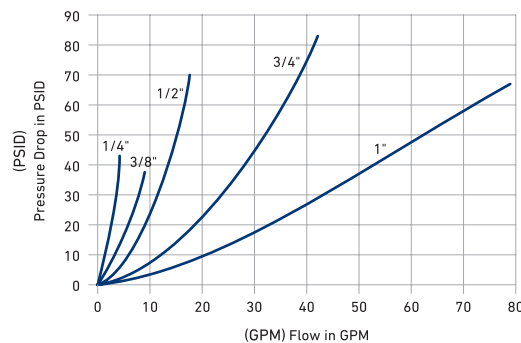
Female



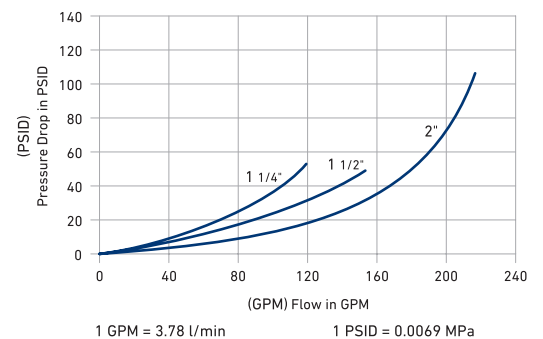
Available also in patented version: ball valve with integrated quick coupling.

Performance

(1/4", 3/8", 1/2", 3/4", 1")
Series (1/4", 3/8", 1/2", 3/4", 1")
200SUS (Test Fluid: Oil-200SUS)



(1 1/4", 1 1/2", 2")
(1 1/4", 1 1/2", 2")



1 GPM = 3.78 l/min

1 PSID = 0.0069 MPa



CODE DESCRIPTION STRUCTURE

QC	G1/2	M/F	DN12,5	1	B
----	------	-----	--------	---	---

Type of coupling

ISO 7241/A

Ends

ISO 1179-1	ASME B1.20.1	ISO 11926-1
BSPP	NPT	(SAE J1926-1) ORB
G 1/4	N 1/4	SAE4
G 3/8	N 3/8	SAE6
G 1/2	N 1/2	SAE8
G 3/4	N 3/4	SAE12
G 1	N 1	SAE16
G 1 1/4	N 1 1/4	SAE20
G 1 1/2	N 1 1/2	SAE24
G 2	N 2	SAE32

MALE

FEMALE

DN/ISO

- 6,3
- 10
- 12,5
- 20
- 25
- 31,5
- 40
- 50

Body Material

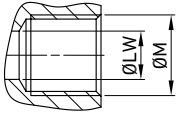
- 1 = 1,0737
- 4 = 1,4404

Seal material

- B = NBR E = FKM*
- E = FKM

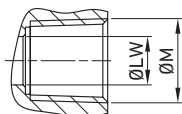
*On request

- Cups
- Plugs



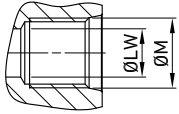
**QUICK COUPLINGS ISO 7241/A (male / female)
FEMALE THREAD ISO 1179-1 BSPP WITH POPPET**

										CS Carbon Steel											SS Stainless Steel
TYPE	DN	PN	ØA	C	Ød	ch	ØM	WEIGHT	ITEM CODE	TYPE	DN	PN	ØA	C	Ød	ch	ØM	WEIGHT	ITEM CODE		
QC ISO A G 1/4 MALE	6.3	MPa 42	mm - 35,5	11,86	19		G1/4	kg 0,037	NC01G010000	QC ISO A G 1/4 MALE	6.3	MPa 30	mm - 34	11,8	19		G1/4	kg 0,037	NC01G010001		
		Psi 6090	inch - 1,40	0,47	0,75			Psi 4350				inch - 1,34	0,46	0,75							
QC ISO A G 1/4 FEMALE	6.3	MPa 42	mm 25	49,6	- 19		G1/4	kg 0,11	NC02G010000	QC ISO A G 1/4 FEMALE	6.3	MPa 30	mm 26	58,5	- 19		G1/4	kg 0,11	NC02G010001		
		Psi 6090	inch 0,98	1,95	- 0,75			Psi 4350				inch 1,02	2,30	- 0,75							
QC ISO A G 3/8 MALE	10	MPa 42	mm - 39,5	17,3	22		G3/8	kg 0,05	NC01G020000	QC ISO A G 3/8 MALE	10	MPa 25	mm - 40	17,3	22		G3/8	kg 0,05	NC01G025001		
		Psi 6090	inch - 1,56	0,68	0,87			Psi 3625				inch - 1,57	0,68	0,87							
QC ISO A G 3/8 FEMALE	10	MPa 42	mm 32	57	- 22		G3/8	kg 0,15	NC02G020000	QC ISO A G 3/8 FEMALE	10	MPa 25	mm 30	64	- 22		G3/8	kg 0,15	NC02G025001		
		Psi 6090	inch 1,26	2,24	- 0,87			Psi 3625				inch 1,18	2,52	- 0,87							
QC ISO A G 1/2 MALE	12,5	MPa 35	mm - 44	20,5	27		G1/2	kg 0,0924	NC01G030000	QC ISO A G 1/2 MALE	12,5	MPa 25	mm - 46	20,5	27		G1/2	kg 0,0924	NC01G030001		
		Psi 5075	inch - 1,73	0,81	1,06			Psi 3625				inch - 1,81	0,81	1,06							
QC ISO A G 1/2 FEMALE	12,5	MPa 35	mm 38,25	66	- 27		G1/2	kg 0,227	NC02G030000	QC ISO A G 1/2 FEMALE	12,5	MPa 25	mm 38	73	- 27		G1/2	kg 0,227	NC02G030001		
		Psi 5075	inch 1,51	2,60	- 1,06			Psi 3625				inch 1,50	2,87	- 1,06							
QC ISO A G 3/4 MALE	20	MPa 25	mm - 55,5	29,1	34		G3/4	kg 0,2	NC01G040000	QC ISO A G 3/4 MALE	20	MPa 25	mm - 54	29,1	36		G3/4	kg 0,2	NC01G045001		
		Psi 3625	inch - 2,19	1,15	1,34			Psi 3625				inch - 2,13	1,15	1,42							
QC ISO A G 3/4 FEMALE	20	MPa 25	mm 48	83	- 34		G3/4	kg 0,49	NC02G040000	QC ISO A G 3/4 FEMALE	20	MPa 25	mm 48	87,5	- 36		G3/4	kg 0,49	NC02G045001		
		Psi 3625	inch 1,89	3,27	- 1,34			Psi 3625				inch 1,89	3,44	- 1,42							
QC ISO A G 1 MALE	25	MPa 25	mm - 66	34,34	41		G 1	kg 0,311	NC01G050000	QC ISO A G 1 MALE	25	MPa 20	mm - 63	34,3	41		G 1	kg 0,311	NC01G050001		
		Psi 3625	inch - 2,60	1,35	1,61			Psi 2900				inch - 2,48	1,35	1,61							
QC ISO A G 1 FEMALE	25	MPa 25	mm 56	100	- 41		G 1	kg 0,7825	NC02G050000	QC ISO A G 1 FEMALE	25	MPa 20	mm 54	103	- 38		G 1	kg 0,7825	NC02G050001		
		Psi 3625	inch 2,20	3,94	- 1,61			Psi 2900				inch 2,13	4,06	- 1,50							
QC ISO A G 1 1/4 MALE	31,5	MPa 25	mm - 74,8	45	50		G 1 1/4	kg 0,537	NC01G060000	QC ISO A G 1 1/4 MALE	31,5	MPa 10	mm - 69	45	50		G 1 1/4	kg 0,537	NC01G065001		
		Psi 3625	inch - 2,94	1,77	1,97			Psi 1450				inch - 2,72	1,77	1,97							
QC ISO A G 1 1/4 FEMALE	31,5	MPa 25	mm 71	117,5	- 50		G 1 1/4	kg 1,243	NC02G060000	QC ISO A G 1 1/4 FEMALE	31,5	MPa 10	mm 70	115	- 50		G 1 1/4	kg 1,243	NC02G065001		
		Psi 3625	inch 2,80	4,63	- 1,97			Psi 1450				inch 2,76	4,53	- 1,97							
QC ISO A G 1 1/2 MALE	40	MPa 20	mm - 84	55	60		G 1 1/2	kg 0,881	NC01G070000	QC ISO A G 1 1/2 MALE	40	MPa 8	mm - 73	55	60		G 1 1/2	kg 0,881	NC01G075001		
		Psi 2900	inch - 3,31	2,17	2,36			Psi 1160				inch - 2,87	2,17	2,36							
QC ISO A G 1 1/2 FEMALE	40	MPa 20	mm 86	135	- 60		G 1 1/2	kg 2,126	NC02G070000	QC ISO A G 1 1/2 FEMALE	40	MPa 8	mm 81	123	- 60		G 1 1/2	kg 2,126	NC02G075001		
		Psi 2900	inch 3,39	5,31	- 2,36			Psi 1160				inch 3,19	4,84	- 2,36							
QC ISO A G 2 MALE	50	MPa 15	mm - 102,5	65,1	75		G 2	kg 1,613	NC01G080000	QC ISO A G 2 MALE	50	MPa 6	mm - 90	65,1	70		G 2	kg 1,613	NC01G085001		
		Psi 2175	inch - 4,04	2,56	2,95			Psi 870				inch - 3,54	2,56	2,76							
QC ISO A G 2 FEMALE	50	MPa 15	mm 103	162,5	- 75		G 2	kg 3,961	NC02G080000	QC ISO A G 2 FEMALE	50	MPa 6	mm 103	147	- 70		G 2	kg 3,961	NC02G085001		
		Psi 2175	inch 4,06	6,40	- 2,95			Psi 870				inch 4,06	5,79	- 2,76							



QUICK COUPLINGS ISO 7241/A (male / female) FEMALE THREAD ASME B1.20.1 NPT WITH POPPET

										CS Carbon Steel											SS Stainless Steel
TYPE	DN	PN	ØA	C	Ød	ch	ØM	WEIGHT	ITEM CODE	TYPE	DN	PN	ØA	C	Ød	ch	ØM	WEIGHT	ITEM CODE		
QC ISO A N 1/4 MALE	6.3	MPa 42	mm - 35,5	11,86	19	N1/4		kg 0,037	NC01N010000	QC ISO A N 1/4 MALE	6.3	MPa 30	mm - 34	11,8	19	N1/4		kg 0,037	NC01N010001		
		Psi 6090	inch - 1,40	0,47	0,75			lb 0,08				Psi 4350	inch - 1,34	0,46	0,75			lb 0,08			
QC ISO A N 1/4 FEMALE	6.3	MPa 42	mm 25	49,6	- 19	N1/4		kg 0,11	NC02N010000	QC ISO A N 1/4 FEMALE	6.3	MPa 30	mm 26	58,5	- 19	N1/4		kg 0,11	NC02N010001		
		Psi 6090	inch 0,98	1,95	- 0,75			lb 0,24				Psi 4350	inch 1,02	2,30	- 0,75			lb 0,24			
QC ISO A N 3/8 MALE	10	MPa 42	mm - 39,5	17,3	22	N3/8		kg 0,05	NC01N020000	QC ISO A N 3/8 MALE	10	MPa 25	mm - 40	17,3	22	N3/8		kg 0,05	NC01N020001		
		Psi 6090	inch - 1,56	0,68	0,87			lb 0,11				Psi 3625	inch - 1,57	0,68	0,87			lb 0,11			
QC ISO A N 3/8 FEMALE	10	MPa 42	mm 32	57	- 22	N3/8		kg 0,15	NC02N020000	QC ISO A N 3/8 FEMALE	10	MPa 25	mm 30	64	- 22	N3/8		kg 0,15	NC02N020001		
		Psi 6090	inch 1,26	2,24	- 0,87			lb 0,33				Psi 3625	inch 1,18	2,52	- 0,87			lb 0,33			
QC ISO A N 1/2 MALE	12,5	MPa 35	mm - 44	20,5	27	N1/2		kg 0,0924	NC01N030000	QC ISO A N 1/2 MALE	12,5	MPa 25	mm - 46	20,5	27	N1/2		kg 0,0924	NC01N030001		
		Psi 5075	inch - 1,73	0,81	1,06			lb 0,20				Psi 3625	inch - 1,81	0,81	1,06			lb 0,20			
QC ISO A N 1/2 FEMALE	12,5	MPa 35	mm 38,25	66	- 27	N1/2		kg 0,227	NC02N030000	QC ISO A N 1/2 FEMALE	12,5	MPa 25	mm 38	73	- 27	N1/2		kg 0,227	NC02N030001		
		Psi 5075	inch 1,51	2,60	- 1,06			lb 0,50				Psi 3625	inch 1,50	2,87	- 1,06			lb 0,50			
QC ISO A N 3/4 MALE	20	MPa 25	mm - 55,5	29,1	34	N3/4		kg 0,2	NC01N040000	QC ISO A N 3/4 MALE	20	MPa 25	mm - 54	29,1	36	N3/4		kg 0,2	NC01N040001		
		Psi 3625	inch - 2,19	1,15	1,34			lb 0,44				Psi 3625	inch - 2,13	1,15	1,42			lb 0,44			
QC ISO A N 3/4 FEMALE	20	MPa 25	mm 48	83	- 34	N3/4		kg 0,49	NC02N040000	QC ISO A N 3/4 FEMALE	20	MPa 25	mm 48	87,5	- 36	N3/4		kg 0,49	NC02N040001		
		Psi 3625	inch 1,89	3,27	- 1,34			lb 1,08				Psi 3625	inch 1,89	3,44	- 1,42			lb 1,08			
QC ISO A N 1 MALE	25	MPa 25	mm - 66	34,34	41	N 1		kg 0,311	NC01N050000	QC ISO A N 1 MALE	25	MPa 20	mm - 63	34,3	41	N 1		kg 0,311	NC01N050001		
		Psi 3625	inch - 2,60	1,35	1,61			lb 0,69				Psi 2900	inch - 2,48	1,35	1,61			lb 0,69			
QC ISO A N 1 FEMALE	25	MPa 25	mm 56	100	- 41	G 1		kg 0,7825	NC02N050000	QC ISO A N 1 FEMALE	25	MPa 20	mm 54	103	- 38	G 1		kg 0,7825	NC02N050001		
		Psi 3625	inch 2,20	3,94	- 1,61			lb 1,73				Psi 2900	inch 2,13	4,06	- 1,50			lb 1,73			
QC ISO A N 1 1/4 MALE	31,5	MPa 25	mm - 74,8	45	50	N1 1/4		kg 0,537	NC01N060000	QC ISO A N 1 1/4 MALE	31,5	MPa 10	mm - 69	45	50	N1 1/4		kg 0,537	NC01N060001		
		Psi 3625	inch - 2,94	1,77	1,97			lb 1,18				Psi 1450	inch - 2,72	1,77	1,97			lb 1,18			
QC ISO A N 1 1/4 FEMALE	31,5	MPa 25	mm 71	117,5	- 50	N1 1/4		kg 1,243	NC02N060000	QC ISO A N 1 1/4 FEMALE	31,5	MPa 10	mm 70	115	- 50	N1 1/4		kg 1,243	NC02N060001		
		Psi 3625	inch 2,80	4,63	- 1,97			lb 2,74				Psi 1450	inch 2,76	4,53	- 1,97			lb 2,74			
QC ISO A N 1 1/2 MALE	40	MPa 20	mm - 84	55	60	N1 1/2		kg 0,881	NC01N070000	QC ISO A N 1 1/2 MALE	40	MPa 8	mm - 73	55	60	N1 1/2		kg 0,881	NC01N070001		
		Psi 2900	inch - 3,31	2,17	2,36			lb 1,94				Psi 1160	inch - 2,87	2,17	2,36			lb 1,94			
QC ISO A N 1 1/2 FEMALE	40	MPa 20	mm 86	135	- 60	N1 1/2		kg 2,126	NC02N070000	QC ISO A N 1 1/2 FEMALE	40	MPa 8	mm 81	126	- 60	N1 1/2		kg 2,126	NC02N070001		
		Psi 2900	inch 3,39	5,31	- 2,36			lb 4,69				Psi 1160	inch 3,19	4,96	- 2,36			lb 4,69			
QC ISO A N 2 MALE	50	MPa 15	mm - 102,5	65,1	75	N 2		kg 1,613	NC01N080000	QC ISO A N 2 MALE	50	MPa 6	mm - 90	65,1	70	N 2		kg 1,613	NC01N080001		
		Psi 2175	inch - 4,04	2,56	2,95			lb 3,56				Psi 870	inch - 3,54	2,56	2,76			lb 3,56			
QC ISO A N 2 FEMALE	50	MPa 15	mm 103	162,5	- 75	N 2		kg 3,961	NC02N080000	QC ISO A N 2 FEMALE	50	MPa 6	mm 103	147	- 70	N 2		kg 3,961	NC02N080001		
		Psi 2175	inch 4,06	6,40	- 2,95			lb 8,73				Psi 870	inch 4,06	5,79	- 2,76			lb 8,73			



**QUICK COUPLINGS ISO 7241/A (male / female)
FEMALE THREAD ISO 11926-1 (SAE J1926-1) ORB WITH POPPET**

										CS Carbon Steel											SS Stainless Steel
TYPE	DN	PN	ØA	C	Ød	ch	ØM	WEIGHT	ITEM CODE	TYPE	DN	PN	ØA	C	Ød	ch	ØM	WEIGHT	ITEM CODE		
QC ISO A SAE4 MALE	6.3	MPa 42	mm -	35,5	11,86	19	SAE4	kg 0,037	NC01S010000	QC ISO A SAE4 MALE	6.3	MPa 30	mm -	34	11,8	19	SAE4	kg 0,037	NC01S01S001		
		Psi 6090	inch -	1,40	0,47	0,75		lb 0,08				Psi 4350	inch -	1,34	0,46	0,75		lb 0,08			
QC ISO A SAE4 FEMALE	6.3	MPa 42	mm 25	49,6	-	19	SAE4	kg 0,11	NC02S010000	QC ISO A SAE4 FEMALE	6.3	MPa 30	mm 26	58,5	-	19	SAE4	kg 0,11	NC02S01S001		
		Psi 6090	inch 0,98	1,95	-	0,75		lb 0,24				Psi 4350	inch 1,02	2,30	-	0,75		lb 0,24			
QC ISO A SAE6 MALE	10	MPa 42	mm -	39,5	17,3	22	SAE6	kg 0,05	NC01S020000	QC ISO A SAE6 MALE	10	MPa 25	mm -	40	17,3	22	SAE6	kg 0,05	NC01S02S001		
		Psi 6090	inch -	1,56	0,68	0,87		lb 0,11				Psi 3625	inch -	1,57	0,68	0,87		lb 0,11			
QC ISO A SAE6 FEMALE	10	MPa 42	mm 32	57	-	22	SAE6	kg 0,15	NC02S020000	QC ISO A SAE6 FEMALE	10	MPa 25	mm 30	64	-	22	SAE6	kg 0,15	NC02S02S001		
		Psi 6090	inch 1,26	2,24	-	0,87		lb 0,33				Psi 3625	inch 1,18	2,52	-	0,87		lb 0,33			
QC ISO A SAE8 MALE	12,5	MPa 35	mm -	44	20,5	27	SAE8	kg 0,0924	NC01S030000	QC ISO A SAE8 MALE	12,5	MPa 25	mm -	46	20,5	27	SAE8	kg 0,0924	NC01S03S001		
		Psi 5075	inch -	1,73	0,81	1,06		lb 0,20				Psi 3625	inch -	1,81	0,81	1,06		lb 0,20			
QC ISO A SAE8 FEMALE	12,5	MPa 35	mm 38,25	66	-	27	SAE8	kg 0,227	NC02S030000	QC ISO A SAE8 FEMALE	12,5	MPa 25	mm 38	73	-	27	SAE8	kg 0,227	NC02S03S001		
		Psi 5075	inch 1,51	2,60	-	1,06		lb 0,50				Psi 3625	inch 1,50	2,87	-	1,06		lb 0,50			
QC ISO A SAE12 MALE	20	MPa 25	mm -	55,5	29,1	34	SAE12	kg 0,2	NC01S040000	QC ISO A SAE12 MALE	20	MPa 25	mm -	54	29,1	36	SAE12	kg 0,2	NC01S04S001		
		Psi 3625	inch -	2,19	1,15	1,34		lb 0,44				Psi 3625	inch -	2,13	1,15	1,42		lb 0,44			
QC ISO A SAE12 FEMALE	20	MPa 25	mm 48	83	-	34	SAE12	kg 0,49	NC02S040000	QC ISO A SAE12 FEMALE	20	MPa 25	mm 48	87,5	-	36	SAE12	kg 0,49	NC02S04S001		
		Psi 3625	inch 1,89	3,27	-	1,34		lb 1,08				Psi 3625	inch 1,89	3,44	-	1,42		lb 1,08			
QC ISO A SAE16 MALE	25	MPa 25	mm -	66	34,34	41	SAE16	kg 0,311	NC01S050000	QC ISO A SAE16 MALE	25	MPa 20	mm -	63	34,3	41	SAE16	kg 0,311	NC01S05S001		
		Psi 3625	inch -	2,60	1,35	1,61		lb 0,69				Psi 2900	inch -	2,48	1,35	1,61		lb 0,69			
QC ISO A SAE16 FEMALE	25	MPa 25	mm 56	100	-	41	SAE16	kg 0,7825	NC02S050000	QC ISO A SAE16 FEMALE	25	MPa 20	mm 54	103	-	38	SAE16	kg 0,7825	NC02S05S001		
		Psi 3625	inch 2,20	3,94	-	1,61		lb 1,73				Psi 2900	inch 2,13	4,06	-	1,50		lb 1,73			
QC ISO A SAE20 MALE	31,5	MPa 25	mm -	74,8	45	50	SAE20	kg 0,537	NC01S060000	QC ISO A SAE20 MALE	31,5	MPa 10	mm -	69	45	50	SAE20	kg 0,537	NC01S06S001		
		Psi 3625	inch -	2,94	1,77	1,97		lb 1,18				Psi 1450	inch -	2,72	1,77	1,97		lb 1,18			
QC ISO A SAE20 FEMALE	31,5	MPa 25	mm 71	117,5	-	50	SAE20	kg 1,243	NC02S060000	QC ISO A SAE20 FEMALE	31,5	MPa 10	mm 70	115	-	50	SAE20	kg 1,243	NC02S06S001		
		Psi 3625	inch 2,80	4,63	-	1,97		lb 2,74				Psi 1450	inch 2,76	4,53	-	1,97		lb 2,74			
QC ISO A SAE24 MALE	40	MPa 20	mm -	84	55	60	SAE24	kg 0,881	NC01S070000	QC ISO A SAE24 MALE	40	MPa 8	mm -	73	55	60	SAE24	kg 0,881	NC01S07S001		
		Psi 2900	inch -	3,31	2,17	2,36		lb 1,94				Psi 1160	inch -	2,87	2,17	2,36		lb 1,94			
QC ISO A SAE24 FEMALE	40	MPa 20	mm 86	135	-	60	SAE24	kg 2,126	NC02S070000	QC ISO A SAE24 FEMALE	40	MPa 8	mm 81	126	-	60	SAE24	kg 2,126	NC02S07S001		
		Psi 2900	inch 3,39	5,31	-	2,36		lb 4,69				Psi 1160	inch 3,19	4,96	-	2,36		lb 4,69			
QC ISO A SAE32 MALE	50	MPa 15	mm -	102,5	65,1	75	SAE32	kg 1,613	NC01S080000	QC ISO A SAE32 MALE	50	MPa 6	mm -	90	65,1	70	SAE32	kg 1,613	NC01S08S001		
		Psi 2175	inch -	4,04	2,56	2,95		lb 3,56				Psi 870	inch -	3,54	2,56	2,76		lb 3,56			
QC ISO A SAE32 FEMALE	50	MPa 15	mm 103	162,5	-	75	SAE32	kg 3,961	NC02S080000	QC ISO A SAE32 FEMALE	50	MPa 6	mm 103	147	-	70	SAE32	kg 3,961	NC02S08S001		
		Psi 2175	inch 4,06	6,40	-	2,95		lb 8,73				Psi 870	inch 4,06	5,79	-	2,76		lb 8,73			