

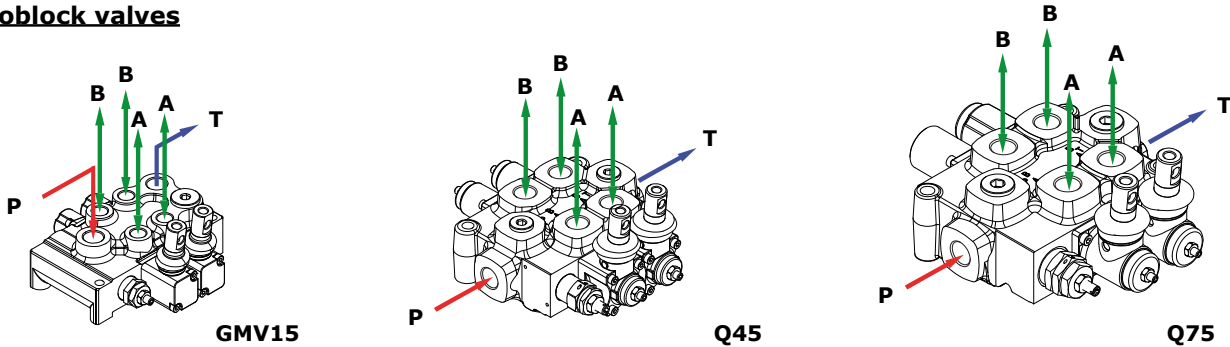
Main rules

The directional control valves range are assembled and tested as per the technical specifications of this catalogue.

Before the final installation on your equipment, please follow the recommendations below:

- the valve can be assembled in any position; in order to prevent body deformation and spool sticking mount the product on a flat surface;
- In order to prevent the possibility of water entering the spool control kit, do not use high pressure washdown directly on the valve;
- before painting, ensure plugs on normally open ports are tightly in place.

Monoblock valves

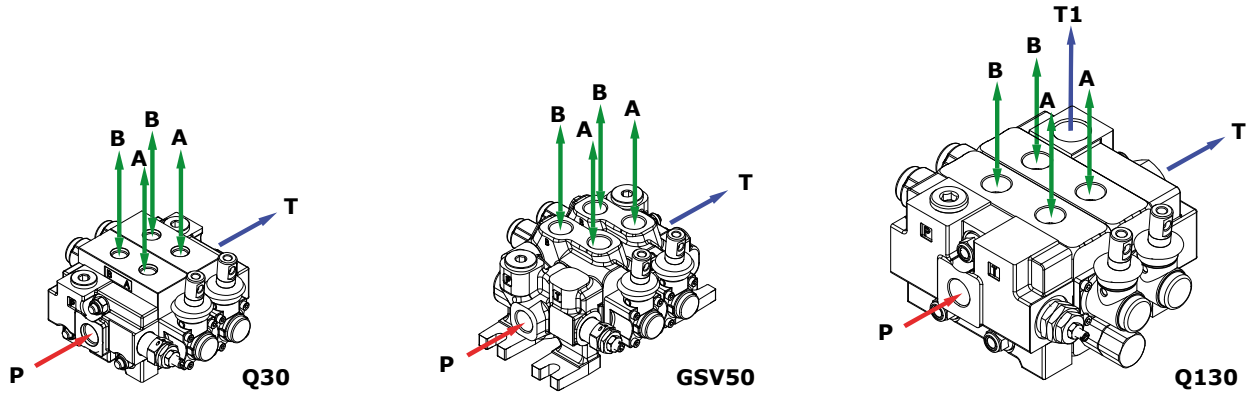


FITTING TIGHTENING TORQUE - Nm / lbft					
THREAD TYPE	P port	A and B ports	T port	Lc port	
Q35	BSP	G 3/8	G 3/8	-	
	With O-Ring seal	35 / 25.8	35 / 25.8	-	
	With copper washer	40 / 29.5	40 / 29.5	-	
	With steel and rubber washer	30 / 22.1	30 / 22.1	-	
	UN-UNF	3/4-16 (SAE 8)	3/4-16 (SAE 8)	3/4-16 (SAE 8)	-
GMV15	With O-Ring seal	50 / 36.9	50 / 36.9	-	
	BSP	G 3/8	G 1/4	G 3/8	G 3/8
	With O-Ring seal	35 / 25.8	25 / 18.4	35 / 25.8	35 / 25.8
	With copper washer	40 / 29.5	30 / 22.1	40 / 29.5	40 / 29.5
	With steel and rubber washer	30 / 22.1	16 / 11.8	30 / 22.1	30 / 22.1
UN-UNF	3/4-16 (SAE 8)	9/16-18 (SAE 6)	3/4-16 (SAE 8)	3/4-16 (SAE 8)	
With O-Ring seal	35 / 25.8	30 / 22.1	35 / 25.8	35 / 25.8	

THREAD TYPE	P and P1 ports		A and B ports		T port	T1 and Lc ports		
	Q25	Q45	Q25	Q45	Q25/Q45	Q25	Q45	
Q25 - Q45	BSP	G 3/8	G 1/2	G 3/8	G 1/2	G 3/8	G 1/2	
	With O-Ring seal	35 / 25.8	50 / 36.9	35 / 25.8	50 / 36.9	50 / 36.9	35 / 25.8	50 / 36.9
	With copper washer	40 / 29.5	60 / 44.3	40 / 29.5	60 / 44.3	60 / 44.3	40 / 29.5	60 / 44.3
	With steel and rubber washer	30 / 22.1	60 / 44.3	30 / 22.1	60 / 44.3	60 / 44.3	30 / 22.1	60 / 44.3
	UN-UNF	9/16-18 (SAE 6)	3/4-16 (SAE 8)	9/16-18 (SAE 6)	3/4-16 (SAE 8)	7/8-14 (SAE 10)	3/4-16 (SAE 8)	3/4-16 (SAE 8)
With O-Ring seal	30 / 22.1	35 / 25.8	30 / 22.1	35 / 25.8	90 / 66.4	35 / 25.8	35 / 25.8	
Q75 - Q95	Q75	Q95	Q75	Q95	Q75/Q95	Q75	Q95	
	BSP	G 1/2	G 3/4	G 1/2	G 3/4	G 1/2	G 3/4	
	With O-Ring seal	50 / 36.9	90 / 66.4	50 / 36.9	90 / 66.4	90 / 66.4	50 / 36.9	90 / 66.4
	With copper washer	60 / 44.3	90 / 66.4	60 / 44.3	90 / 66.4	90 / 66.4	60 / 44.3	90 / 66.4
	With steel and rubber washer	60 / 44.3	70 / 51.6	60 / 44.3	70 / 51.6	70 / 51.6	60 / 44.3	70 / 51.6
UN-UNF	7/8-14 (SAE 10)	1" 1/16-12 (SAE 12)	7/8-14 (SAE 10)	1" 1/16-12 (SAE 12)	1" 1/16-12 (SAE 12)	7/8-14 (SAE 10)	1" 1/16-12 (SAE 12)	
With O-Ring seal	90 / 66.4	95 / 70.1	90 / 66.4	95 / 70.1	95 / 70.1	90 / 66.4	95 / 70.1	

NOTE – These torques are recommended. Assembly tightening torque depends on many factors, including lubrication, coating and surface finish.

Sectional valves



FITTING TIGHTENING TORQUE - Nm / lbft						
THREAD TYPE	P and P1 ports		A and B ports		T port	T1 and Lc ports
	Q30	Q50	Q30	Q50	Q30/Q50	Q30/ Q50
Q30 - Q50	BSP	G 3/8	G 1/2	G 3/8	G 1/2	G 1/2
	With O-Ring seal	35 / 25.8	50 / 36.9	35 / 25.8	50 / 36.9	50 / 36.9
	With copper washer	40 / 29.5	60 / 44.3	40 / 29.5	60 / 44.3	60 / 44.3
	With steel and rubber washer	30 / 22.1	60 / 44.3	30 / 22.1	60 / 44.3	60 / 44.3
	UN-UNF	3/4-16 (SAE 8)	3/4-16 (SAE 8)	9/16-18 (SAE 6)	3/4-16 (SAE 8)	7/8-14 (SAE 10)
With O-Ring seal	35 / 25.8	35 / 25.8	30 / 22.1	35 / 25.8	90 / 66.4	35 / 25.8
GSV50	BSP	G 1/2		G 1/2		G 1/2
	With O-Ring seal	50 / 36.9		50 / 36.9		50 / 36.9
	With copper washer	60 / 44.3		60 / 44.3		60 / 44.3
	With steel and rubber washer	60 / 44.3		60 / 44.3		60 / 44.3
	UN-UNF	3/4-16 (SAE 8)		3/4-16 (SAE 8)		7/8-14 (SAE 10)
With O-Ring seal	35 / 25.8		35 / 25.8		90 / 66.4	35 / 25.8
Q80	BSP	G 1/2 - G 3/4		G 1/2 - G 3/4		G 3/4
	With O-Ring seal	50 / 36.9 - 90 / 66.4		50 / 36.9 - 90 / 66.4		90 / 66.4
	With copper washer	60 / 44.3 - 90 / 66.4		60 / 44.3 - 90 / 66.4		90 / 66.4
	With steel and rubber washer	60 / 44.3 - 70 / 51.6		60 / 44.3 - 70 / 51.6		70 / 51.6
	UN-UNF	7/8-14 (SAE 10)		3/4-16 (SAE 8)		1" 1/16-12 (SAE 12)
With O-Ring seal	90 / 66.4		35 / 25.8		95 / 70.1	90 / 66.4
Q130	BSP	G 3/4 - G 1"		G 3/4 - G 1"		G 1"
	With O-Ring seal	90 / 66.4 - 100 / 73.8		90 / 66.4 - 100 / 73.8		100 / 73.8
	With copper washer	90 / 66.4 - 90 / 66.4		90 / 66.4 - 90 / 66.4		90 / 66.4
	With steel and rubber washer	70 / 51.6 - 100 / 73.8		70 / 51.6 - 100 / 73.8		100 / 73.8
	UN-UNF	1" 5/16-12 (SAE 16)		1" 5/16-12 (SAE 16)		1" 5/16-12 (SAE 16)
With O-Ring seal	150 / 100.6		150 / 100.6		150 / 100.6	150 / 100.6

NOTE - These torques are recommended. Assembly tightening torque depends on many factors, including lubrication, coating and surface finish.