



COMPANY WITH
QUALITY SYSTEM
CERTIFIED BY DNV GL
= ISO 9001 =

COLLETORE OLIO
OIL MANIFOLD
ÖLVERTEILERBLOCK

CODICE/CODE/COE

CMA0135-AZ-0 **-OL**

N° STAZIONI
NO. OF STATIONS
ANZAHL STATIONEN

- * **A**- alluminio (standard)
- S**- acciaio (su richiesta)
- X**- acciaio inox (su richiesta)
- * **A**- aluminium (standard)
- S**- steel (on request)
- X**- stainless steel (on request)
- * **A**- aluminium (standard)
- S**- stahl (auf Anfrage)
- X**- edelstahl (auf Anfrage)

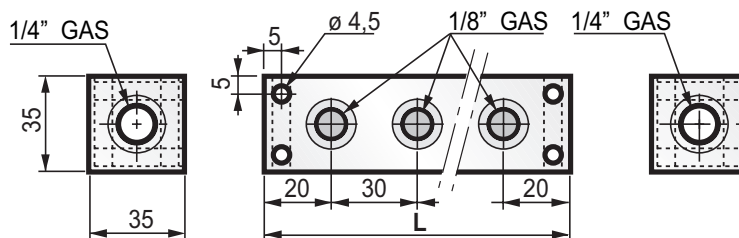
N° (N° STAZIONI) (No. OF STATIONS) (ANZAHL STATIONEN)	L	PESO WEIGHT GEWICHT kg
2	70	0,2
3	100	0,29
4	130	0,38
5	160	0,47
-	-	-
-	-	-
-	-	-
-	-	-

COLLETORE SCHEMA PARALLELO
PARALLEL SCHEME MANIFOLD
VERTEILERBLOCK MIT PARALLELSCHEMA



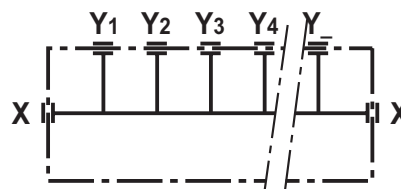
FOTO/PICTURE/FOTO

CMA0135-AZ-05-OL



MASSIMA PRESSIONE DI LAVORO: 250 BAR (LEGA DI ALUMINIO)
MAXIMUM OPERATING PRESSURE: 250 BAR (ALUMINIUM ALLOY)
MAXIMALER BETRIEBSDRUCK: 250 BAR (ALUMINIUMLEGIERUNG)
TRATTAMENTO SUPERFICIALE ALLUMINIO: ANODIZZAZIONE NEUTRA SATINATA
ALUMINIUM SURFACE TREATMENT: NEUTRAL SATIN ANODIZING
OBERFLÄCHENBEHANDLUNG ALUMINIUM : NEUTRAL SATIN ANODISIERUNG

SCHEMA - DIAGRAM - SCHEMA



via S. Quirico, 201/H
50013 Campi Bisenzio - FI
www.oleorama.it
oleorama@oleorama.it
export@oleorama.it