



## LC152

Output : 2.1hp / 1.6kW

## H135 - G420

Output : 3.5hp / 2.6kW - 9hp / 12kW

## LC2V80FD

Output : 24.1hp / 18kW

## LC2V90FD

Output : 32hp / 24kW

# Horizontal Engines

## LC-Series/G-Series/V-Twin

### GENERAL PURPOSE ENGINES

Suitable in a wide range of equipment such as gardening, engineering, agriculture, livestock, fishery.

Can be used to repower machinery including generators, snow blowers, water pumps, tillers, pressure washers, road cutters, rammers, shredders.

### LC-SERIES FEATURES

- Large capacity muffler design ensures a lower noise level
- Easy starting. Starts with 3 attempts
- Low oil alert function. Auto-stop when oil is low
- Optimized combustion chamber and air vent, to improve the burning efficiency. Lower fuel consumption and exhaust emission

### G-SERIES FEATURES

- Easy starting. Starts with 3 attempts
- Low oil alert function. Auto-stop when oil is low
- Patented exterior design
- Patented combustion purification technology, very low exhaust emissions

- New combustion chamber design, accurate ignition control and new air vent design improves the power output by 5% compared to the same displaced engines
- Lightweight T-type piston reduces vibration and noise
- Optimized combustion chamber and air vent, to improve the burning efficiency. Lower fuel consumption and exhaust emission

### V-TWIN SERIES FEATURES

- **Low noise and low vibration.** CAE analysis technology is used to optimize component design and reduce vibration and noise
- **Superior reliability.** Internal fuel pump for stability and reliability. Full pressure lubrication extends engine life. Dual-layer cyclone-type air filter with premium filter element prevents dust entering the engine
- **Powerful output.** V-twin cylinder 90° angled OHV design gives a small sized, large displacement, strong power output. Optimized valve timing design and combustion efficiency improves power by 5-10% compared to same displacement engines
- **Low oil consumption.** Optimized air vent cooling system, equipped with oil cooler, decreased oil temperature. Labyrinth type fuel and air separation structure reduces oil consumption



### LC152F-15

- 2.1 / 1.6 @ 3600 r/min
- 87 cc
- L310 x W260 x H305 mm
- 9 kg net weight



### H135

- 3.5 / 2.6 @ 3600 r/min
- 133 cc
- L305 x W341 x H318 mm
- 13 kg net weight



### G200F / F-B5

- 5.5 / 4.1 @ 3600 r/min
- 196 cc
- L376 x W312 x H335 mm
- 16 kg net weight



### G270F

- 8.0 / 6.0 @ 3600 r/min
- 270 cc
- L430 x W380 x H410 mm
- 25 kg net weight



### G390F

- 11 / 8.2 @ 3600 r/min
- 389 cc
- L450 x W405 x H443 mm
- 31 kg net weight



### G420F

- 12 / 9 @ 3600 r/min
- 420 cc
- L450 x W405 x H443 mm
- 31 kg net weight



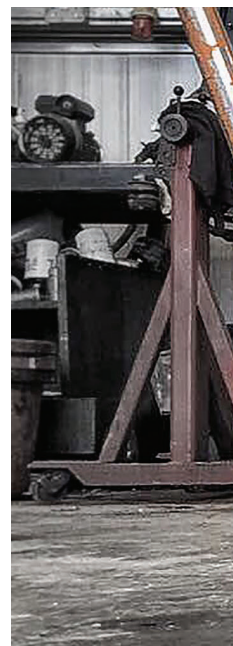
### LC2V80FD-1

- 24.1 / 18 @ 3600 r/min
- 764 cc
- L507 x W552 x H500 mm
- 50.5 kg net weight



### LC2V90FD-1

- 32 / 24 @ 3600 r/min
- 999 cc
- L555 x W567 x H685 mm
- 60 kg net weight



# Horizontal Engines

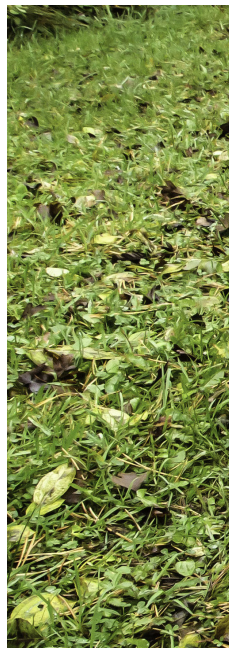
## Specifications

Engine Model	LC152F-15	H135 (G120)	G200F-B5
Engine Type	Single cylinder, 4-stroke, OHV, forced air cooling		
Net Power (hp / kW)	2.1 / 1.6 @ 3600 r/min	3.5 / 2.6 @ 3600 r/min	5.5 / 4.1 @ 3600 r/min
Gross Power (hp / kW)	2.8 / 2.1 @ 3600 r/min	4.3 / 3.2 @ 3600 r/min	6.5 / 4.85 @ 3600 r/min
Net Torque (Nm)	4.5 @ 3000 r/min	7.3 @ 2800 r/min	12.4 @ 2500 r/min
Bore x Stroke (mm)	54 x 38	62 x 44	68 x 54
Displacement (cc)	87	133	196
Compression Ratio	8.0 : 1		8.5 : 1
Oil Capacity (L)	0.45		0.6
Fuel Consumption (g/kw h)	≤ 450	-	≤ 395
Oil Consumption (g/kw h)		≤ 6.8	
Idle Speed	1700 ± 150	-	1450 ± 150
Starting System	Recoil		Recoil / Electric start opt
Noise (≤ 7m)	70dBA	-	70dBA
Dimensions (L x W x H mm)	310 x 260 x 305	305 x 341 x 318	376 x 312 x 335
Net Weight (kg)	9	13	16
Shaft Options	All shaft options on page 25		



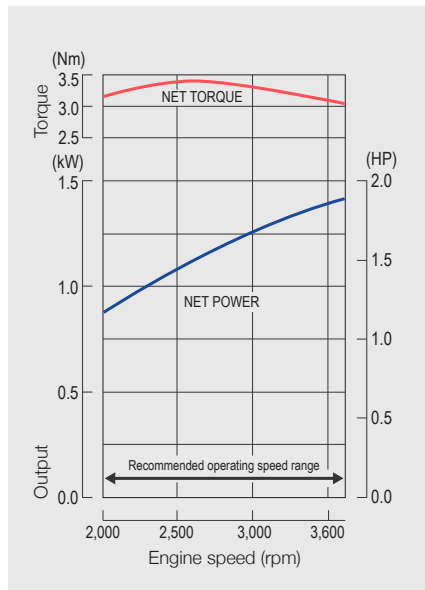
Engine Model	G200F	G270F	G390F
Engine Type	Single cylinder, 4-stroke, OHV, forced air cooling		
Net Power (hp / kW)	5.5 / 4.1 @ 3600 r/min	8.0 / 6.0 @ 3600 r/min	11 / 8.2 @ 3600 r/min
Gross Power (hp / kW)	6.5 / 4.85 @ 3600 r/min	9.0 / 6.7 @ 3600 r/min	13 / 9.7 @ 3600 r/min
Net Torque (Nm)	12.4 @ 2500 r/min	16.3 @ 2500 r/min	25.1 @ 2500 r/min
Bore x Stroke (mm)	68 x 54	77 x 58	88 x 64
Displacement (cc)	196	270	389
Compression Ratio	8.5 : 1	8.1 : 1	8 : 1
Oil Capacity (L)	0.6	0.95	1.1
Fuel Consumption (g/kw h)	≤ 395	≤ 374	
Oil Consumption (g/kw h)	≤ 6.8		
Idle Speed	1450 ± 150		
Starting System	Recoil / Electric start optional		
Noise (≤ 7m)	70dBA		
Dimensions (L x W x H mm)	376 x 312 x 335	430 x 380 x 410	450 x 405 x 443
Net Weight (kg)	16	25	31
Shaft Options	All shaft options on page 25		

Engine Model	G420F	LC2V80FD-1	LC2V90FD-1
Engine Type	Single cylinder, 4-stroke, OHV, forced air cooling	V-Twin, 4-stroke, OHV, forced air cooling	
Net Power (hp / kW)	12 / 9 @ 3600 r/min	24.1 / 19 @ 3600 r/min	32 / 22 @ 3600 r/min
Gross Power (hp / kW)	15 / 11.2 @ 3600 r/min	-	-
Net Torque (Nm)	26.5 @ 2500 r/min	52 @ 2800 r/min	70 @ 2500 r/min
Bore x Stroke (mm)	90 x 66	80 x 76	90 x 78.5
Displacement (cc)	420	764	999
Compression Ratio	8.3 : 1	8.5 : 1	
Oil Capacity (L)	1.1	1.8	2.5
Fuel Consumption (g/kw h)	≤ 374	≤ 360	-
Oil Consumption (g/kw h)	≤ 6.8	-	-
Idle Speed	1450 ± 150	1500 ± 150	1800 ± 150
Starting System	Recoil / Electric start optional	Electric	
Noise (≤ 7m)	70dBA	-	-
Dimensions (L x W x H mm)	450 x 405 x 443	507 x 552 x 500	555 x 567 x 685
Net Weight (kg)	31	50.5	60
Shaft Options	All shaft options on page 25		

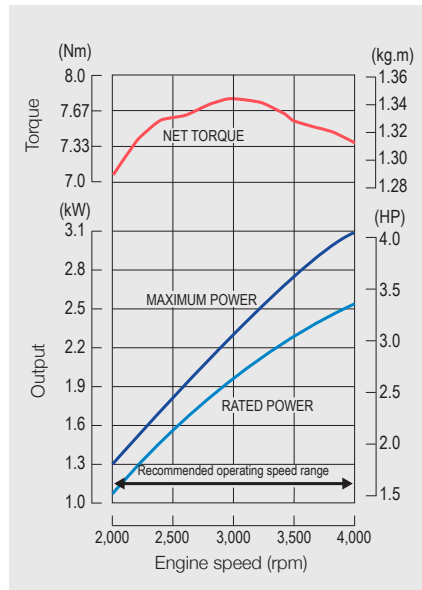


# Horizontal Engines Power Curves

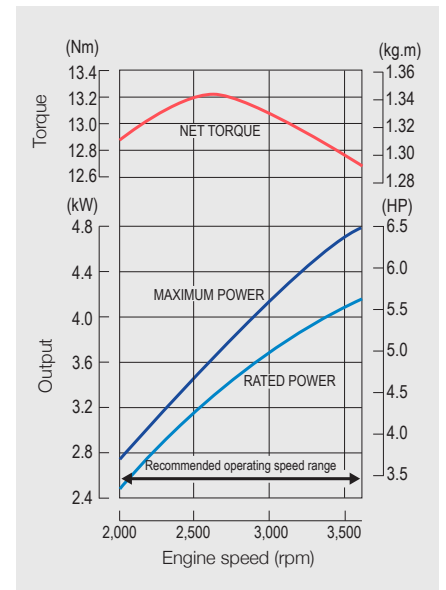
LC152F-P/F-15/F-M5



H135F-M5/F-P5

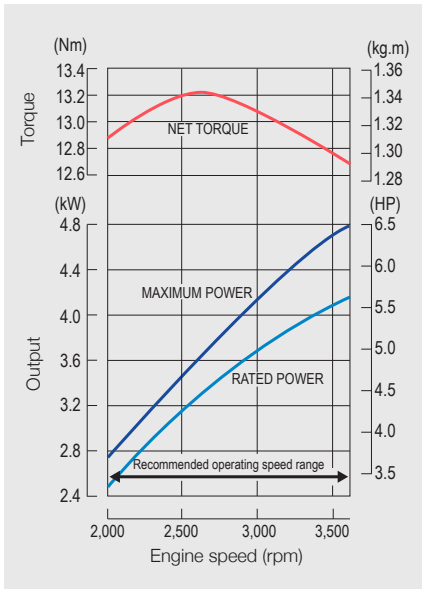


G200F / G200F-B5

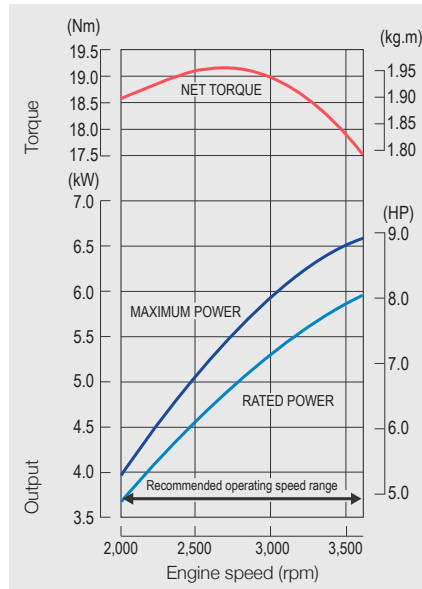




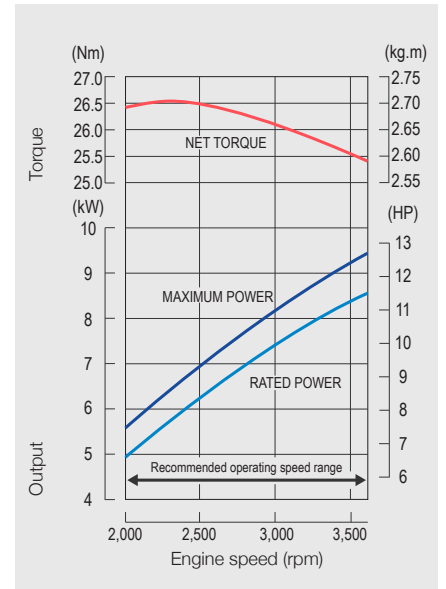
**G200F / G200F-B5**



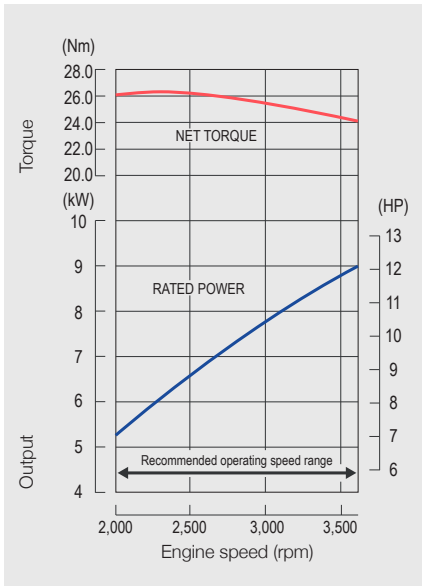
**G270F**



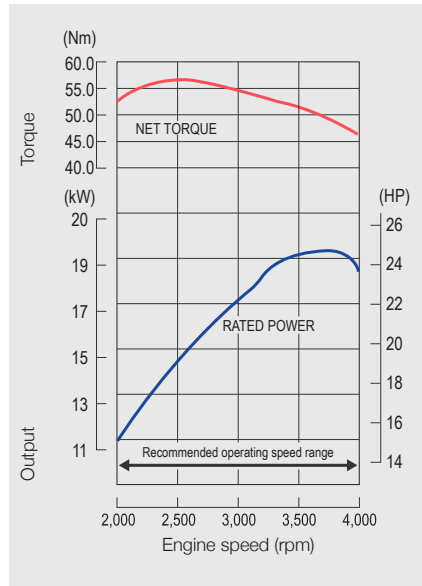
**G390F**



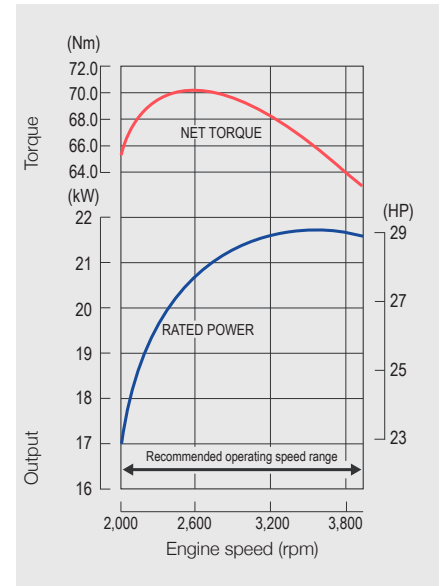
**G420F**



**LC2V80FD-1**



**LC2V90FD-1**

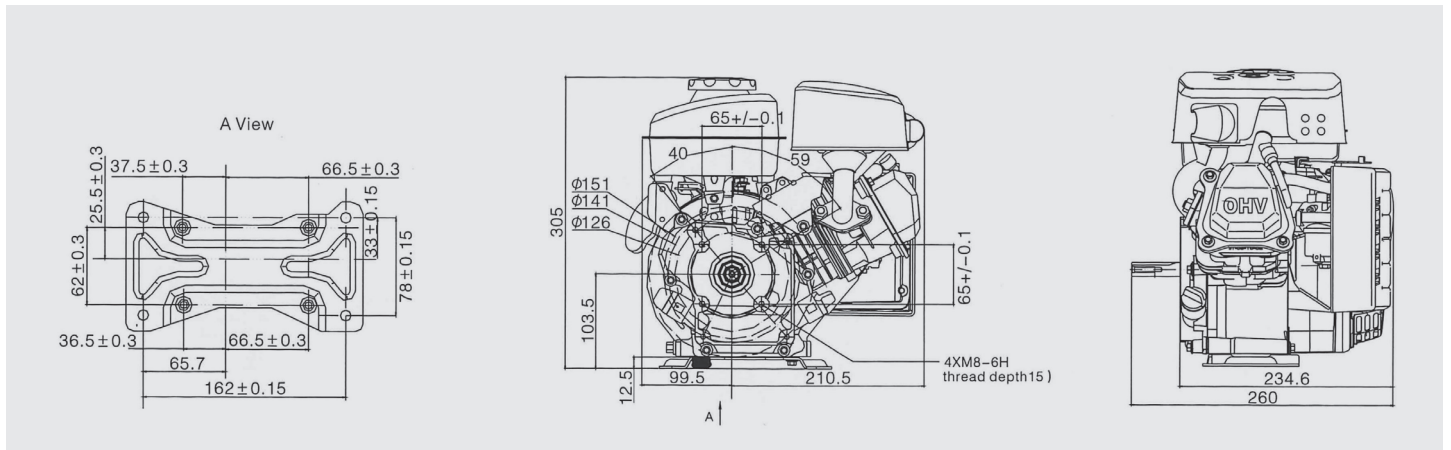




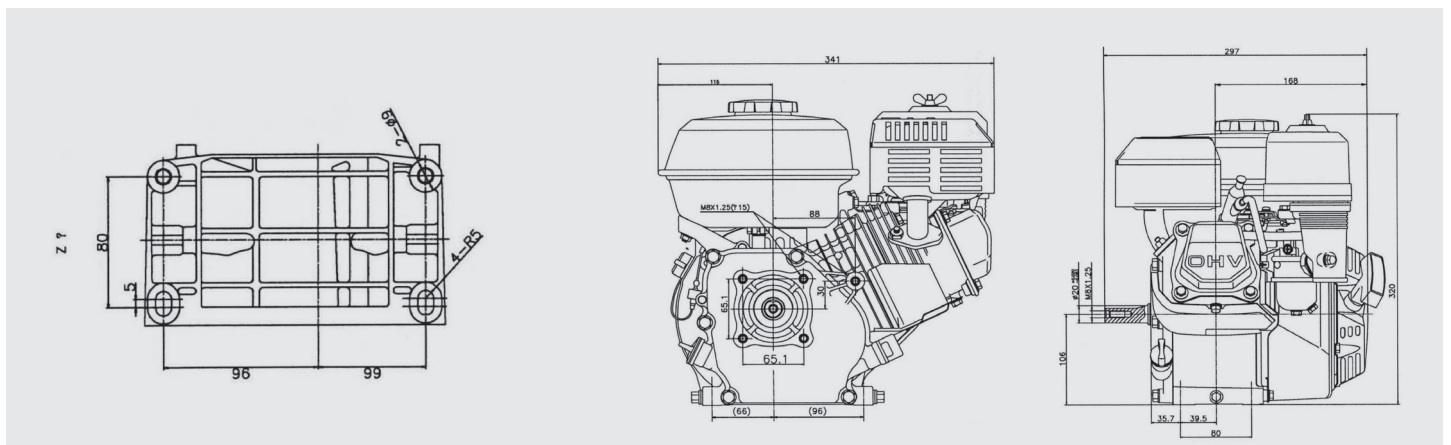
# Horizontal Engines

## Dimensions & Shafts

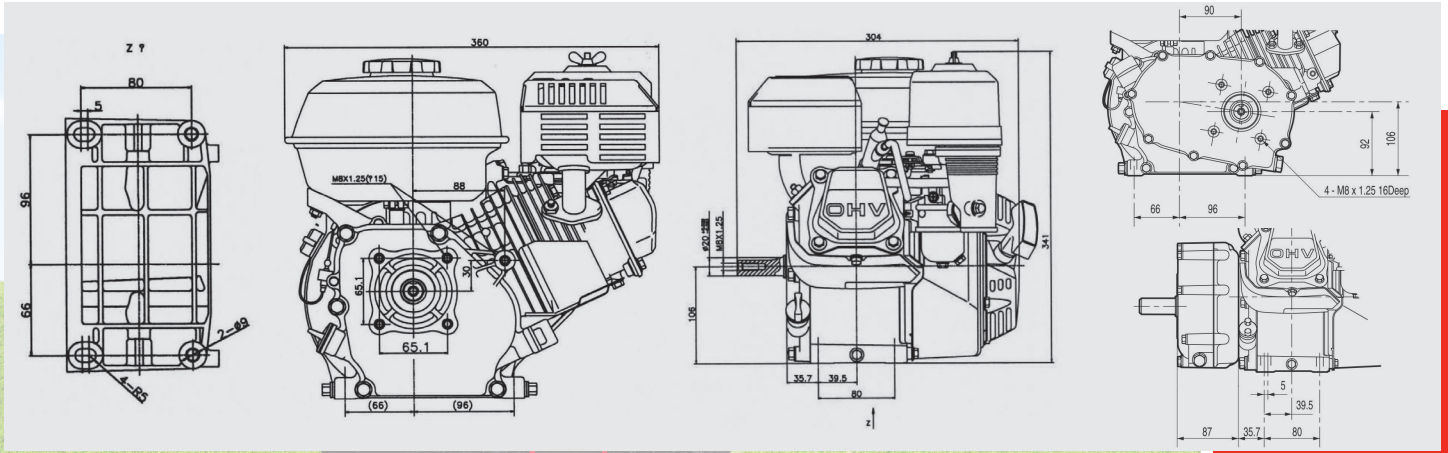
LC152F-P/F-15/F-M5



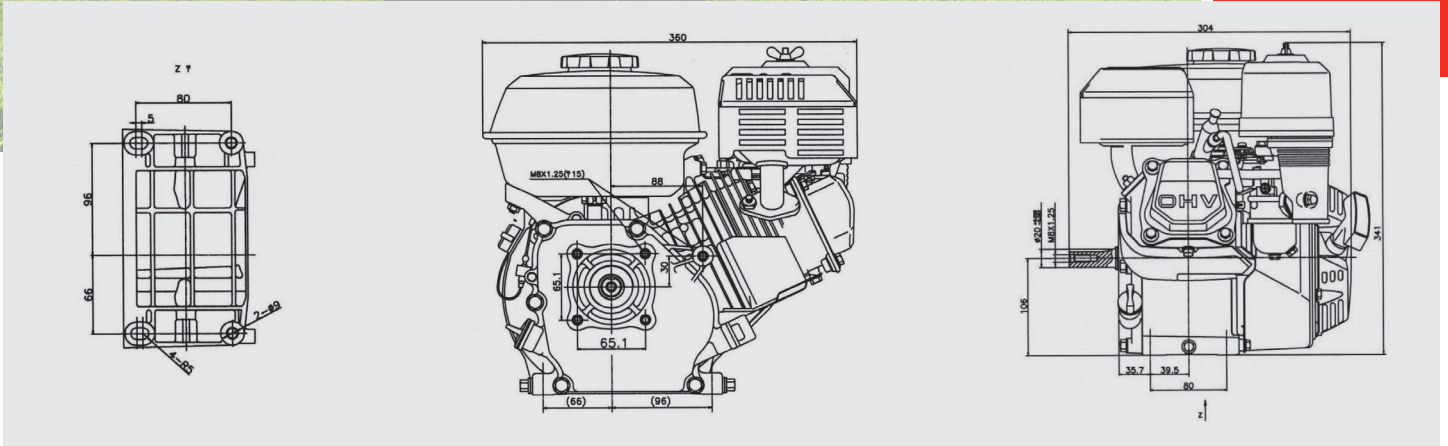
H135F-M5/F-P5 (G120)



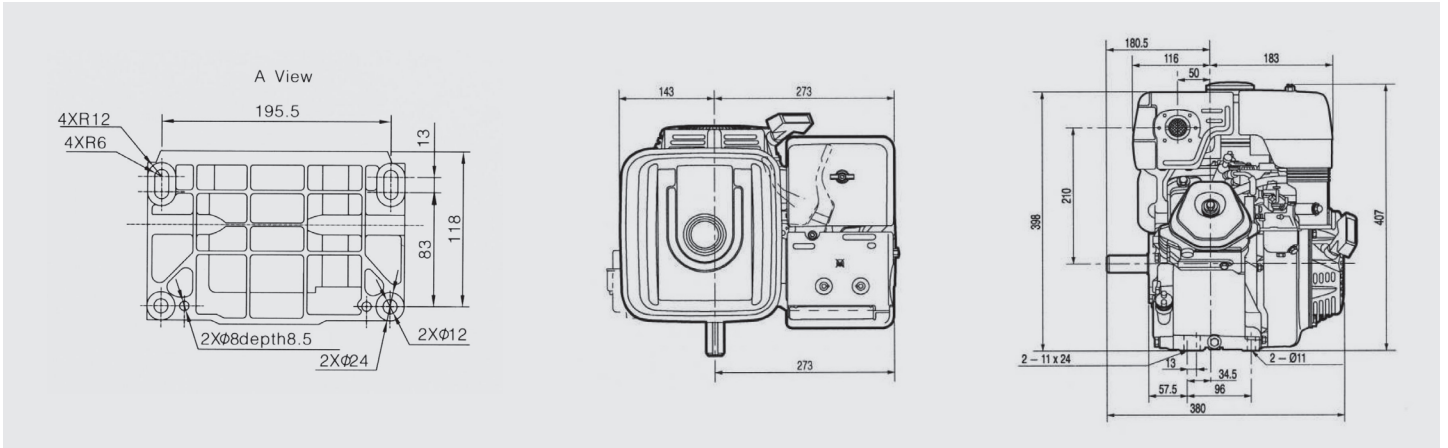
### G200F-B5



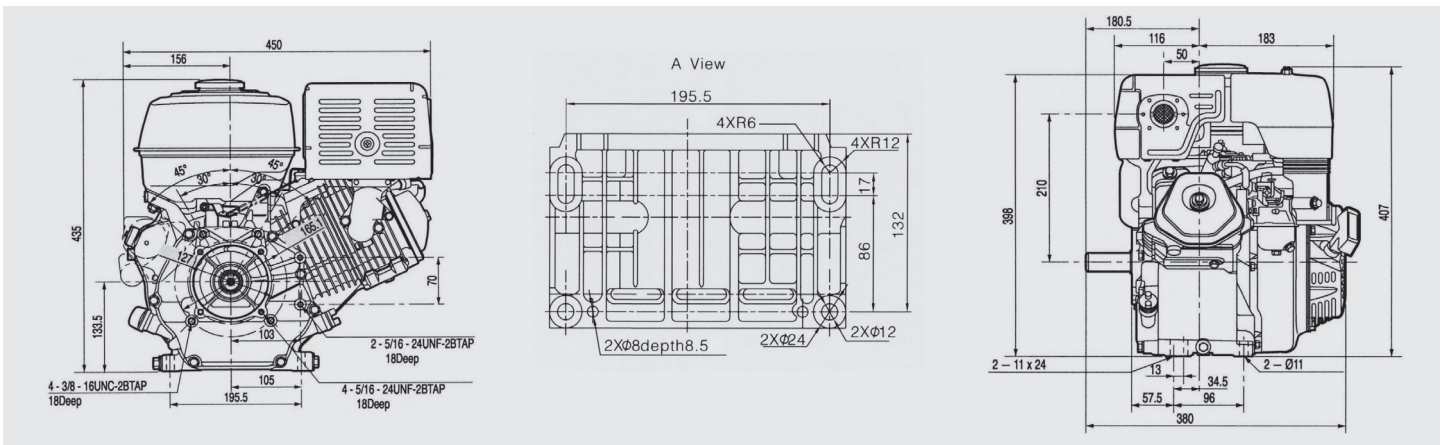
### G200F



### G270F

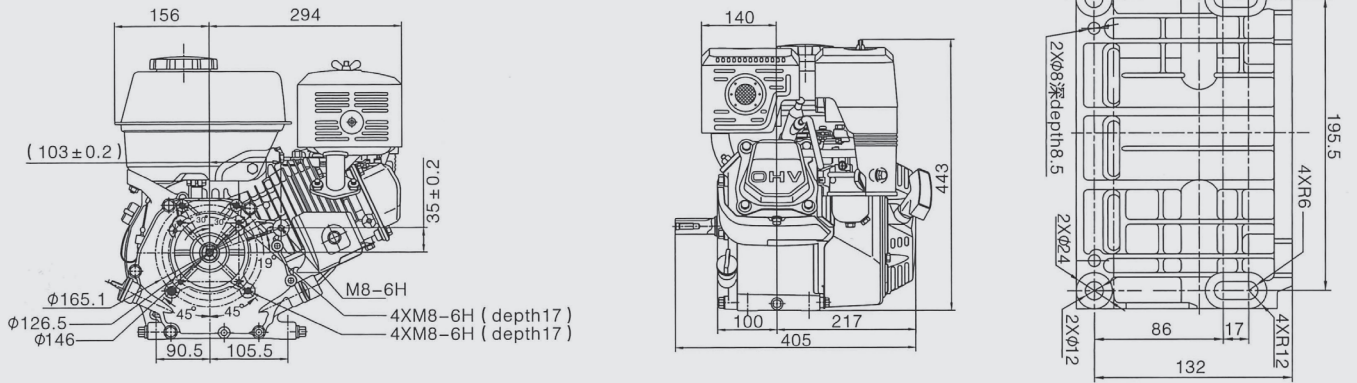


### G390F

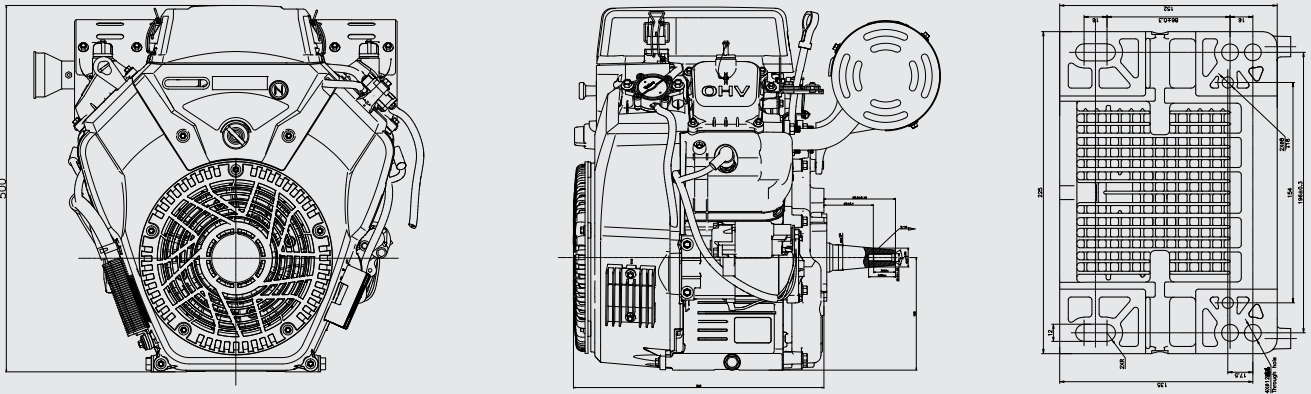




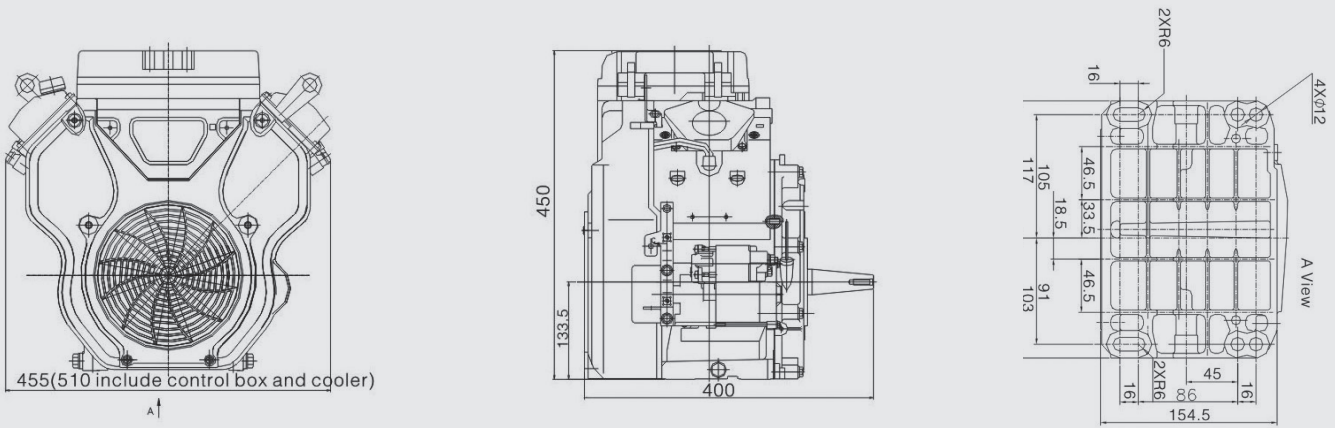
# G420F



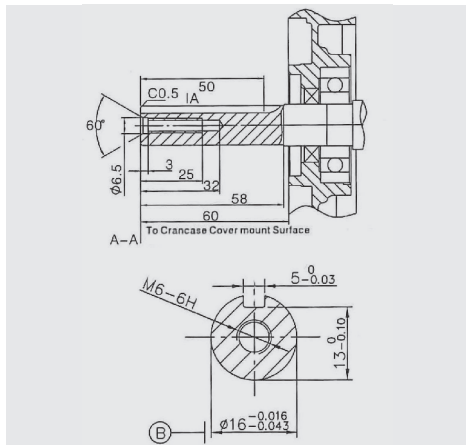
# LC2V80FD-1



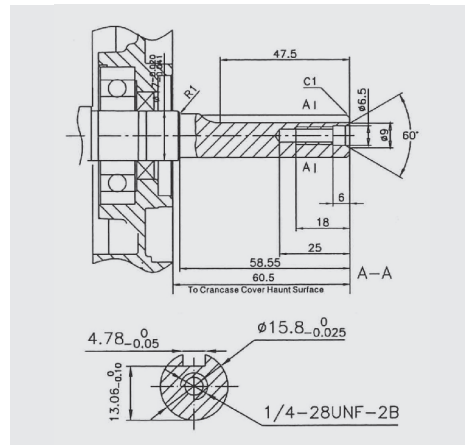
# LC2V90FD-1



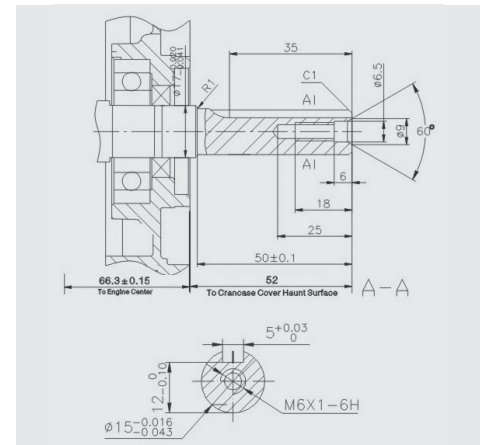
# LC152F-15 SHAFT



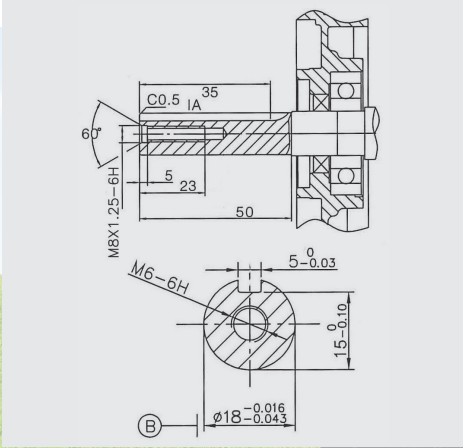
# LC152F-P5 SHAFT



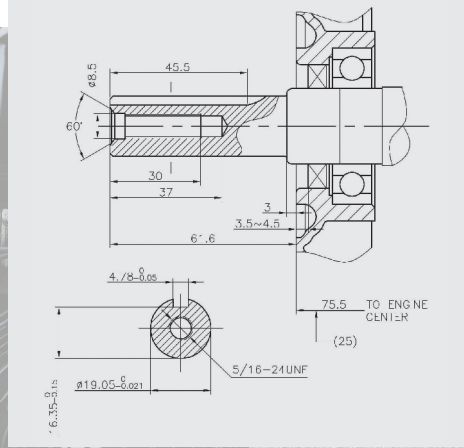
# LC152F M-SHAFT



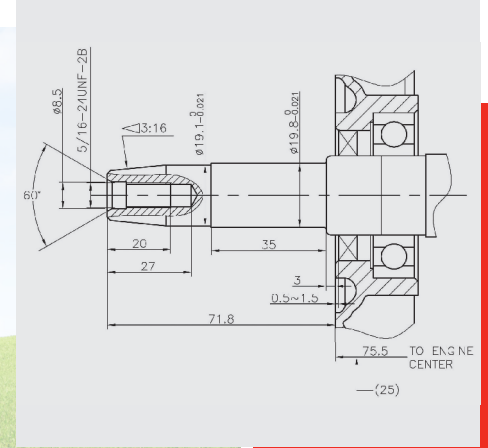
### H135 M-SHAFT



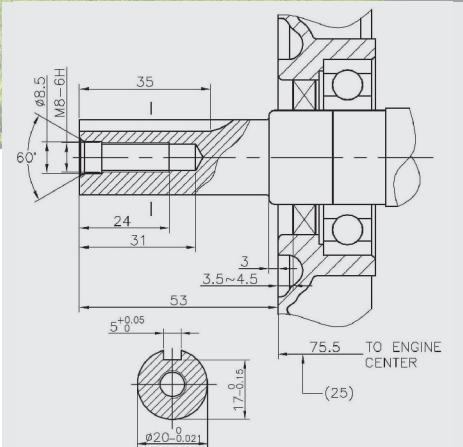
### H135 P-SHAFT



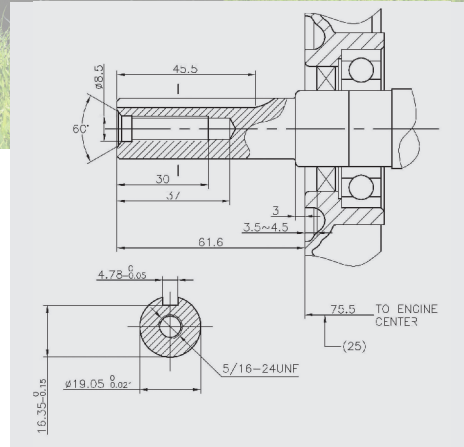
### G200 G-SHAFT



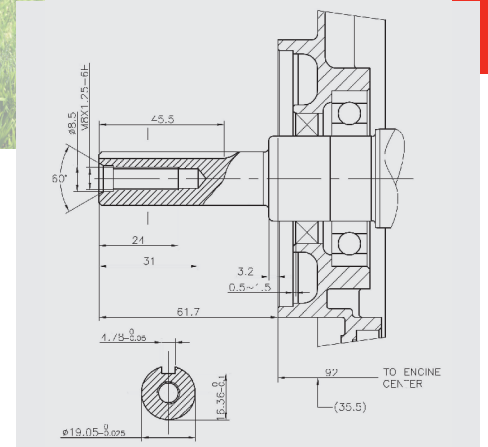
### G200 M-SHAFT



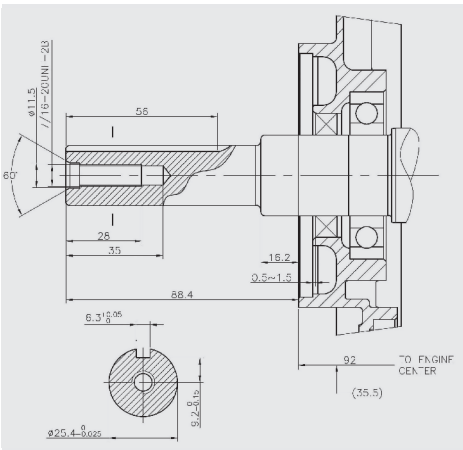
### G200 P-SHAFT



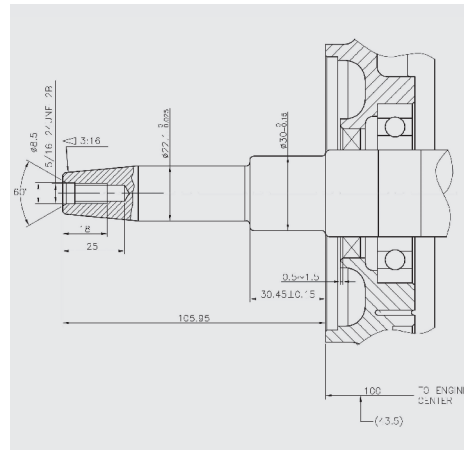
### G270 M-SHAFT



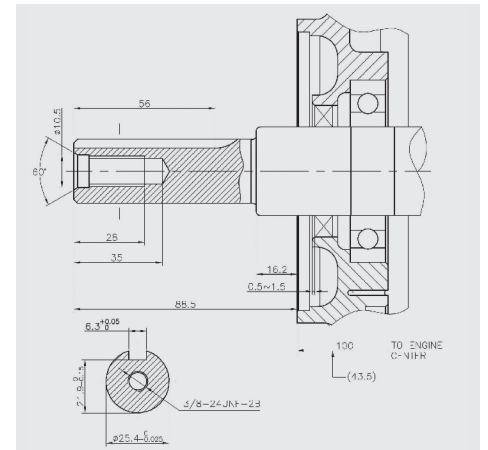
### G270 P-SHAFT



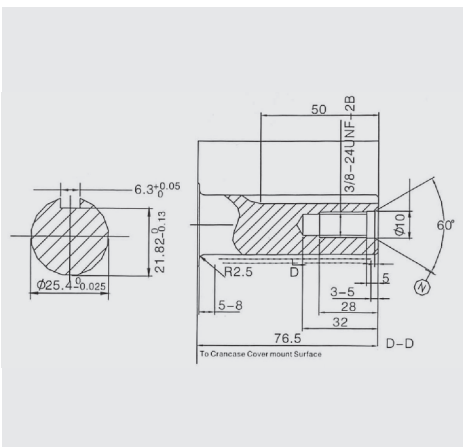
### G390 / G420 G-SHAFT



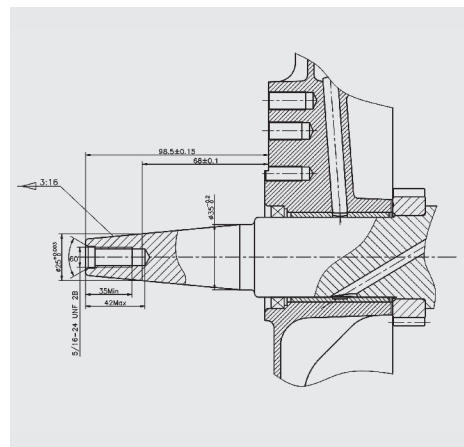
### G390 / G420 P-SHAFT



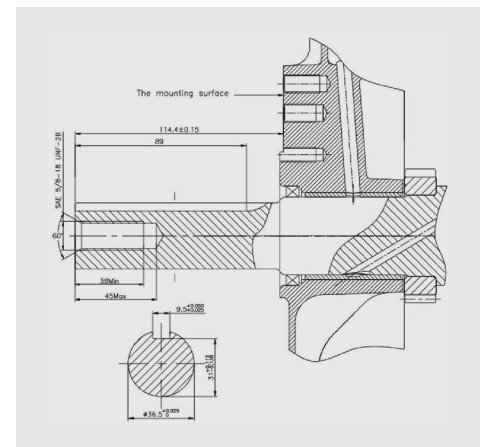
### LC2V80FD-1 P-SHAFT



### LC2V90FD-1 G-SHAFT



### LC2V90FD-1 P-SHAFT





# Loncin Repower & 2 Year Warranty

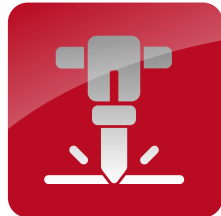
THE LONCIN ENGINE SERIES OFFERS A COST EFFECTIVE OPTION FOR THE REPOWER MARKET

- Durable
- High performance
- Electric start optional
- Low noise
- Fuel efficient
- Standard engine drive shafts
- Standard mounting points

## CONSTRUCTION



## PLANT AND TOOL



## GROUND CARE/UTILITY



## LEISURE

