

Metric Hydraulic Tubing
Bright - DIN 2391/C ST37.4,
Chrome 6 Free

Imperial Hydraulic Tubing
Imperial - DIN 2391/C ST37.4

316 Stainless Steel Tube
Seamless ASTM A269, Metric
Seamless ASTM A269, Imperial

HYDRAULIC TUBE

1 metre & 2 metre lengths available to buy

3 & 6 metre lengths are available upon request, with additional options for custom lengths. Contact us for further details.

Maximum Temperature +870°C, Maximum Working Pressure 428 bar.



Seamless ASTM A269, Metric

| 0214 | OD mm | Wall Thickness mm | Max Pressure Bar |
|------------|-------|-------------------|------------------|
| 765-0610 | 6 | 1 | 428 |
| 765-6X1.5 | 6 | 1.5 | 627 |
| 765-6X2 | 6 | 2 | 942 |
| 765-0813 | 8 | 1 | 321 |
| 765-8X1.5 | 8 | 1.5 | 472 |
| 765-8X2 | 8 | 2 | 706 |
| 765-1013 | 10 | 1 | 257 |
| 765-10X1.5 | 10 | 1.5 | 385 |
| 765-10X2 | 10 | 2 | 564 |
| 765-1213 | 12 | 1 | 210 |
| 765-12X1.5 | 12 | 1.5 | 321 |
| 765-12X2 | 12 | 2 | 420 |
| 765-1513 | 15 | 1 | 200 |
| 765-15X1.5 | 15 | 1.5 | 257 |
| 765-15X2 | 15 | 2 | 376 |
| 765-16X1.5 | 16 | 1.5 | 235 |
| 765-16X2 | 16 | 2 | 321 |
| 765-18X1.5 | 18 | 1.5 | 235 |
| 765-18X2 | 18 | 2 | 314 |
| 765-20X1.5 | 20 | 1.5 | 212 |
| 765-20X2 | 20 | 2 | 257 |
| 765-20X3 | 20 | 3 | 424 |
| 765-22X1.5 | 22 | 1.5 | 193 |
| 765-22X2 | 22 | 2 | 256 |
| 765-25X1.5 | 25 | 1.5 | 169 |
| 765-25X2 | 25 | 2 | 226 |
| 765-25X2.5 | 25 | 2.5 | 210 |
| 765-25X3 | 25 | 3 | 339 |
| 765-28X2 | 28 | 2 | 201 |
| 765-30X3 | 30 | 3 | 257 |
| 765-35X3 | 35 | 3 | 242 |
| 765-42X3 | 42 | 3 | 201 |

Seamless ASTM A269, Imperial

| 0214 | OD | SWG | Max Pressure Bar |
|-----------|------|-----|------------------|
| 2020-1372 | 1/8" | 20 | 718 |
| 2020-1380 | 1/4" | 20 | 360 |
| 2020-1406 | 3/8" | 20 | 240 |
| 2020-1414 | 1/2" | 20 | 180 |
| 2020-1422 | 3/4" | 20 | 120 |
| 2020-1430 | 1" | 20 | 90 |

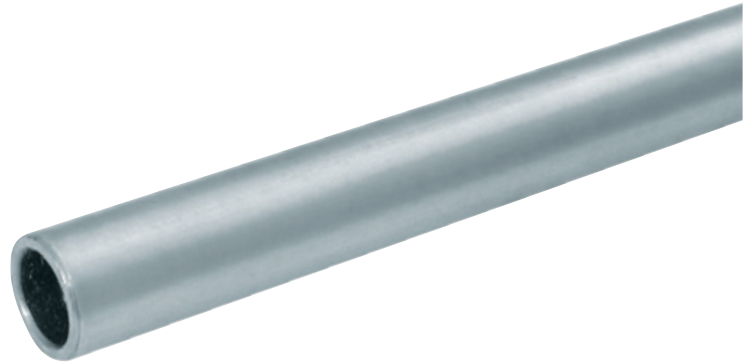
1 metre & 2 metre lengths available to buy

3 & 6 metre lengths are available upon request, with additional options for custom lengths. Contact us for further details.

Maximum working pressure has been determined according to DIN 2413 scope of application 1, for primarily static load at temperatures up to 120°C.

Chrome 6 Free

| 0201 | OD mm | Wall Thickness mm | Pressure Kg/cm ² |
|---------------|-------|-------------------|-----------------------------|
| HST4X1.0-C6F | 4 | 1 | 624 |
| HST6X1.0-C6F | 6 | 1 | 365 |
| HST6X1.5-C6F | 6 | 1.5 | 624 |
| HST6X2.0-C6F | 6 | 2 | 989 |
| HST8X1.0-C6F | 8 | 1 | 259 |
| HST8X1.5-C6F | 8 | 1.5 | 423 |
| HST8X2.0-C6F | 8 | 2 | 624 |
| HST10X1.0-C6F | 10 | 1 | 201 |
| HST10X1.5-C6F | 10 | 1.5 | 321 |
| HST10X2.0-C6F | 10 | 2 | 460 |
| HST12X1.0-C6F | 12 | 1 | 164 |
| HST12X1.5-C6F | 12 | 1.5 | 259 |
| HST12X2.0-C6F | 12 | 2 | 365 |
| HST14X1.5-C6F | 14 | 1.5 | 217 |
| HST14X2.0-C6F | 14 | 2 | 303 |
| HST15X1.5-C6F | 15 | 1.5 | 201 |
| HST15X2.0-C6F | 15 | 2 | 279 |
| HST16X1.5-C6F | 16 | 1.5 | 187 |
| HST16X2.0-C6F | 16 | 2 | 259 |
| HST16X2.5-C6F | 16 | 2.5 | 337 |
| HST16X3.0-C6F | 16 | 3 | 423 |
| HST18X1.5-C6F | 18 | 1.5 | 164 |
| HST18X2.0-C6F | 18 | 2 | 226 |
| HST18X2.5-C6F | 18 | 2.5 | 300 |
| HST20X2.0-C6F | 20 | 2 | 201 |
| HST20X2.5-C6F | 20 | 2.5 | 259 |
| HST20X3.0-C6F | 20 | 3 | 321 |
| HST20X3.5-C6F | 20 | 3.5 | 388 |
| HST20X4.0-C6F | 20 | 4 | 460 |
| HST22X1.5-C6F | 22 | 1.5 | 132 |
| HST22X2.0-C6F | 22 | 2 | 181 |
| HST22X2.5-C6F | 22 | 2.5 | 232 |
| HST25X1.5-C6F | 25 | 1.5 | 115 |
| HST25X2.0-C6F | 25 | 2 | 157 |
| HST25X2.5-C6F | 25 | 2.5 | 201 |
| HST25X3.0-C6F | 25 | 3 | 247 |
| HST25X4.0-C6F | 25 | 4 | 347 |
| HST28X1.5-C6F | 28 | 1.5 | 102 |
| HST28X2.0-C6F | 28 | 2 | 139 |
| HST28X2.5-C6F | 28 | 2.5 | 177 |
| HST28X3.0-C6F | 28 | 3 | 217 |
| HST30X2.5-C6F | 30 | 2.5 | 164 |
| HST30X3.0-C6F | 30 | 3 | 201 |
| HST30X4.0-C6F | 30 | 4 | 279 |
| HST35X2.0-C6F | 35 | 2 | 109 |
| HST35X2.5-C6F | 35 | 2.5 | 139 |
| HST35X3.0-C6F | 35 | 3 | 169 |
| HST35X5.0-C6F | 35 | 5 | 303 |
| HST38X3.0-C6F | 38 | 3 | 155 |
| HST38X4.0-C6F | 38 | 4 | 213 |
| HST42X3.0-C6F | 42 | 3 | 139 |
| HST42X4.0-C6F | 42 | 4 | 190 |
| HST50X3.0-C6F | 50 | 3 | 115 |
| HST50X5.0-C6F | 50 | 5 | 201 |
| HST50X6.0-C6F | 50 | 6 | 247 |



1 metre & 2 metre lengths available to buy

3 & 6 metre lengths are available upon request, with additional options for custom lengths. Contact us for further details.

Maximum working pressure has been determined according to DIN 2413 scope of application 1, for primarily static load at temperatures up to 120°C.

Metric Bright - DIN 2391/C ST37.4

| 0201 | OD mm | Wall Thickness mm | Pressure Kg/cm ² |
|-----------|-------|-------------------|-----------------------------|
| HST4X1.0 | 4 | 1.0 | 624 |
| HST6X1.0 | 6 | 1.0 | 365 |
| HST6X1.5 | 6 | 1.5 | 624 |
| HST6X2.0 | 6 | 2.0 | 989 |
| HST8X2.0 | 8 | 2.0 | 624 |
| HST12X2.5 | 12 | 2.5 | 485 |
| HST14X1.5 | 14 | 1.5 | 217 |
| HST14X2.0 | 14 | 2.0 | 303 |
| HST16X2.5 | 16 | 2.5 | 337 |
| HST18X2.0 | 18 | 2.0 | 226 |
| HST18X2.5 | 18 | 2.5 | 300 |
| HST20X2.5 | 20 | 2.5 | 259 |
| HST20X3.0 | 20 | 3.0 | 321 |
| HST20X3.5 | 20 | 3.5 | 388 |
| HST22X1.5 | 22 | 1.5 | 132 |
| HST22X2.0 | 22 | 2.0 | 181 |
| HST25X1.5 | 25 | 1.5 | 115 |
| HST25X2.0 | 25 | 2.0 | 157 |
| HST25X2.5 | 25 | 2.5 | 201 |
| HST25X3.0 | 25 | 3.0 | 257 |
| HST28X1.5 | 28 | 1.5 | 102 |
| HST28X2.5 | 28 | 2.5 | 177 |
| HST28X3.0 | 28 | 3.0 | 217 |
| HST30X2.5 | 30 | 2.5 | 164 |
| HST30X4.0 | 30 | 4.0 | 279 |
| HST35X2.0 | 35 | 2.0 | 109 |
| HST35X2.5 | 35 | 2.5 | 139 |
| HST35X3.0 | 35 | 3.0 | 169 |
| HST35X5.0 | 35 | 5.0 | 303 |
| HST38X3.0 | 38 | 3.0 | 155 |
| HST38X5.0 | 38 | 5.0 | 275 |
| HST42X3.0 | 42 | 3.0 | 139 |
| HST42X4.0 | 42 | 4.0 | 190 |



Imperial Bright - DIN 2391/C ST37.4

| 0201 | OD | SWG | Max Pressure Bar |
|--------------|--------|-----|------------------|
| HST1/4X16G | 1/4" | 16 | 648 |
| HST3/8X16G | 3/8" | 16 | 377 |
| HST1/2X16G | 1/2" | 16 | 267 |
| HST5/8X16G | 5/8" | 16 | 207 |
| HST3/4X16G | 3/4" | 16 | 169 |
| HST1X16G | 1" | 16 | 124 |
| HST1.1/4X16G | 1.1/4" | 16 | 98 |
| HST1.1/2X16G | 1.1/2" | 16 | 81 |