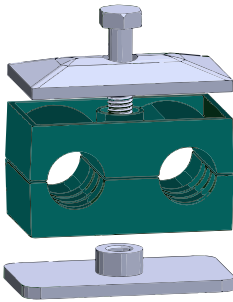
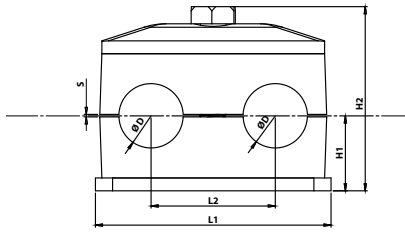


### Complete Clamp



Clamp Body Colour		Clamp Body Material	
<b>Y</b>	Green		
<b>N</b>	Black	<b>PA</b>	Polyamide
<b>S</b>	Yellow	<b>T</b>	<b>TPE</b>
<b>B</b>	Blue	<b>PP</b>	Polypropylene

Polypropylene - Work Temperature -30°C to +90°C

Polyamide - Work Temperature -40°C to +120°C

Aluminum - Work Temperature Up to 300°C

Metal / Coating Type	
<b>H</b>	Uncoated
<b>G</b>	Carbon Steel Fe / Zn 8 Galvanized
<b>F</b>	Znph Phosphated
<b>SS</b>	AISI 316 Stainless Steel

Our stocked clamps are made from green polypropylene with carbon steel galvanized metal base.

Contact us if you're interested in alternative colours or materials.

Group	Product Code	O.D of Pipe mm	Nominal Bore Pipe Inches	Dimension Table				
				L1	L2	H1	H2	S min.
1	HBKIK0106	6		37	20	16	40	0,6
	HBKIK0106,4	6,4						
	HBKIK0108	8						
	HBKIK0109,5	9,5						
	HBKIK0110	10	1/8					
	HBKIK0112	12						
2	HBKIK0212,7	12,7		55	29	17,5	42	0,7
	HBKIK0213,5	13,5	1/4					
	HBKIK0214	14						
	HBKIK0215	15						
	HBKIK0216	16						
	HBKIK0217,2	17,2	3/8					
3	HBKIK0319	19		70	36	22	52	0,7
	HBKIK0320	20						
	HBKIK0321,3	21,3	1/2					
	HBKIK0322	22						
	HBKIK0325	25						
	HBKIK0325,4	25,4						
4	HBKIK0426,9	26,9		85	45	24	58	0,7
	HBKIK0428	28	3/4					
	HBKIK0430	30						
5	HBKIK0532	32		110	56	31	70	0,7
	HBKIK0533,7	33,7	1					
	HBKIK0535	35						
	HBKIK0538	38						
	HBKIK0540	40						
	HBKIK0542	42	1-1/4					