



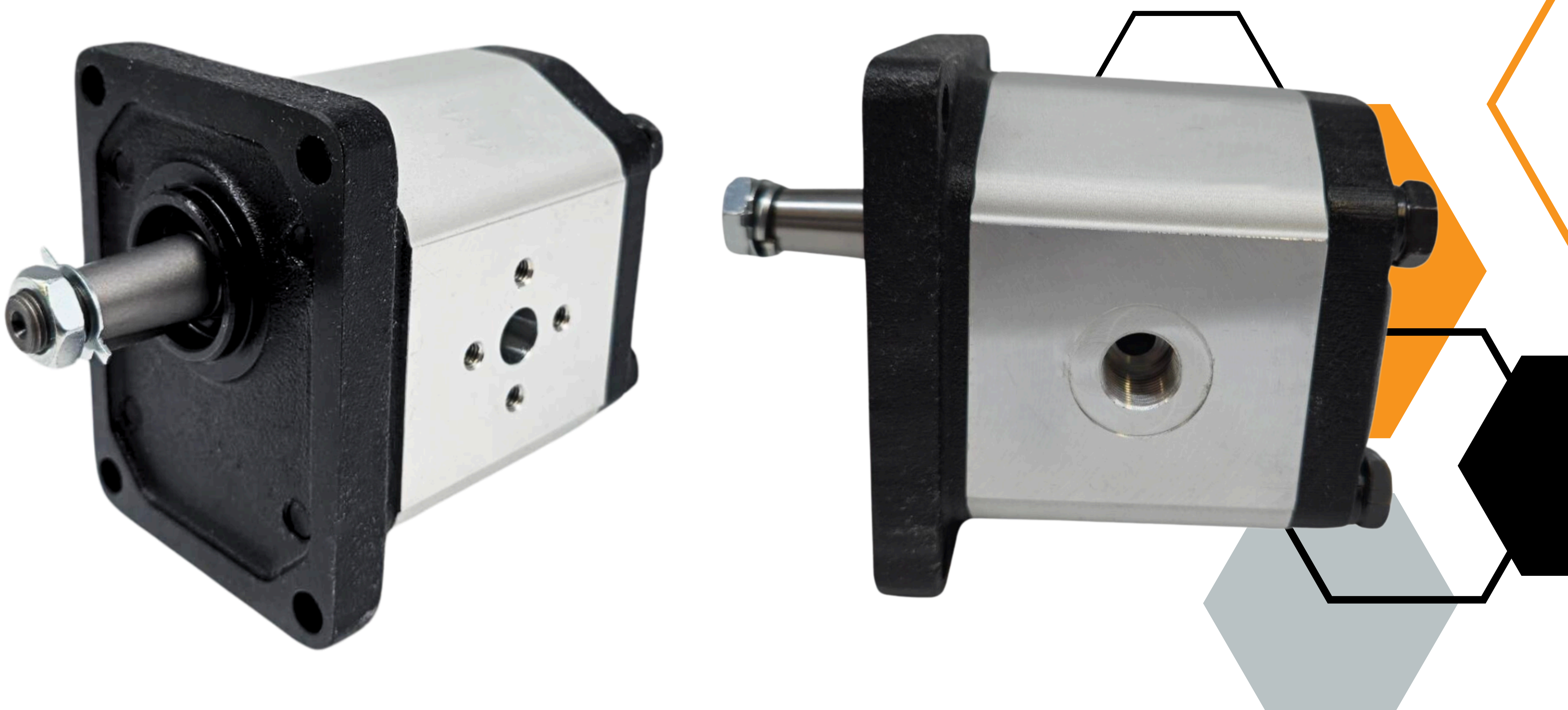
FLOWFIT®

GROUP 2 GEAR PUMPS

Group 2 hydraulic gear pumps are mid-sized pumps designed for versatile hydraulic applications requiring moderate flow rates and pressure capabilities. These pumps are commonly used in agricultural machinery, construction equipment, material handling systems, and industrial applications.

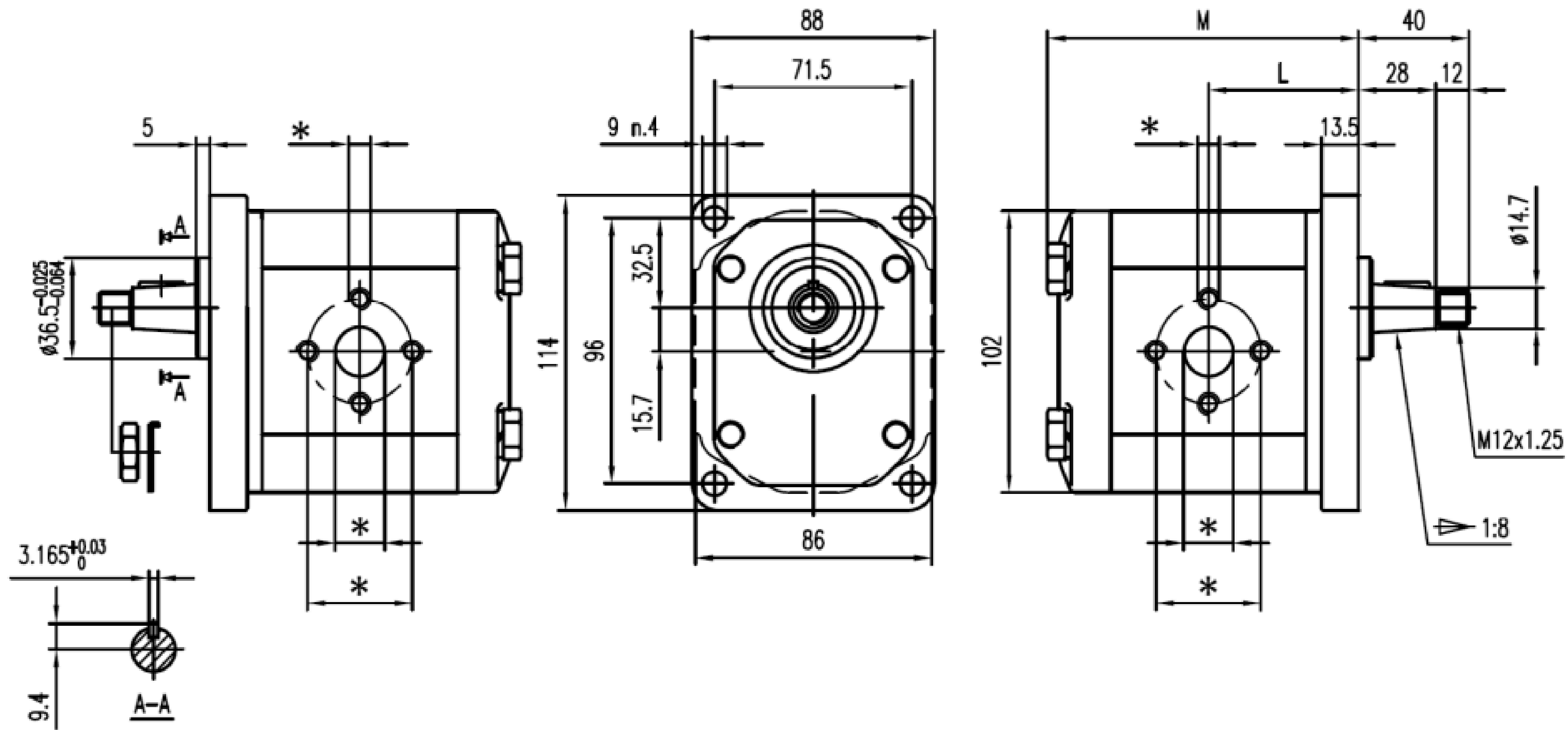
Key Features:

- Operating Pressure: Supports up to 270 bar
- Porting Options: Available in threaded, or elbow ported.
- Versatility: Commonly used in agricultural machinery, construction equipment, material handling systems, and industrial applications.
- Rotation Options: Can be supplied in clockwise or counter clockwise rotation depending on system requirements.



GROUP TWO HYDRAULIC GEAR PUMP

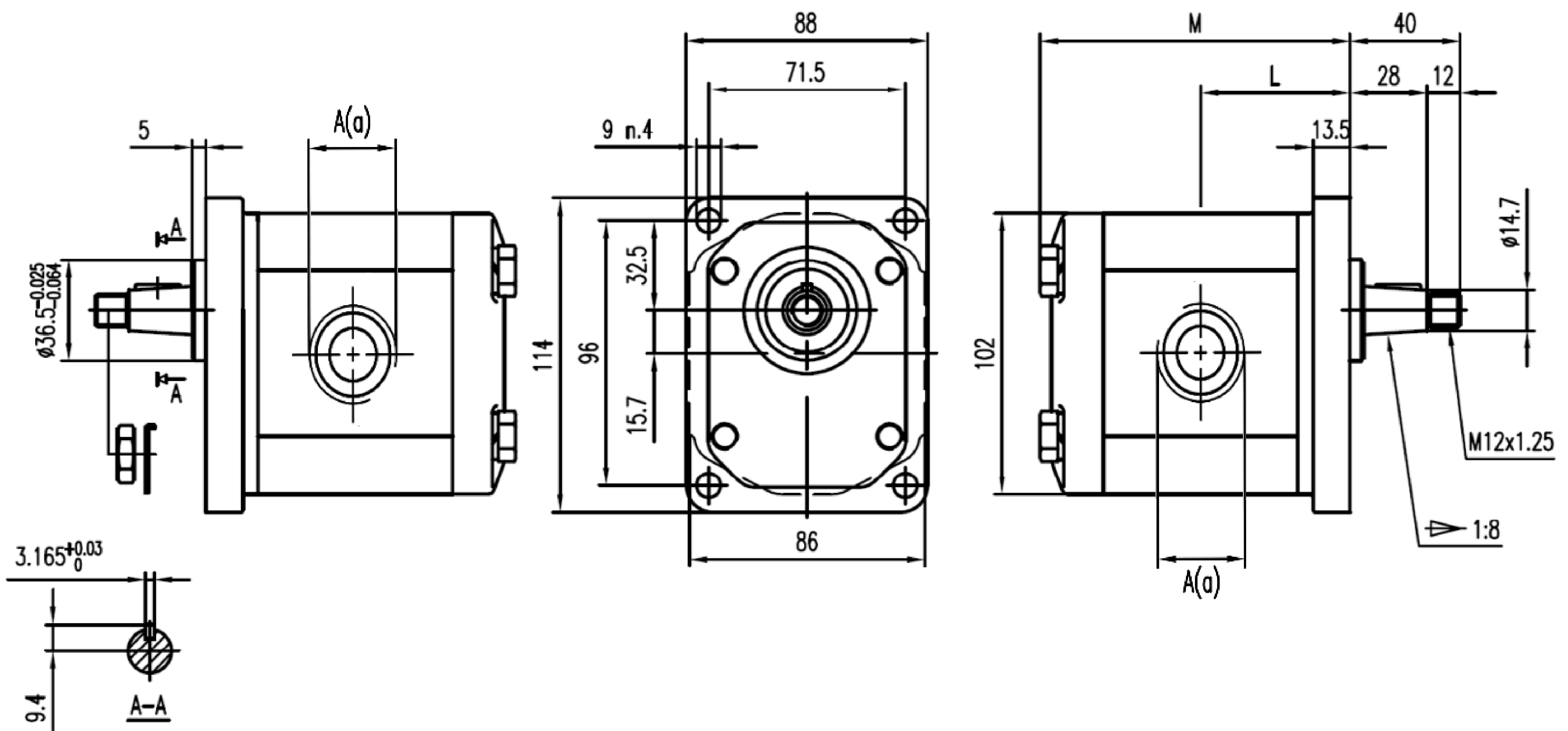
EURO 4 BOLT, 1/8 TAPER, ELBOW PORTS



Displacement	Max Pressure			Max Speed	Min Speed	Dimensions	
	P1	P2	P3			M	L
cm ³ / rev	P1	P2	P3	r/min	r/min	mm	mm
4	270	285	300	4000	600	92.7	44.4
6	270	285	300	4000	600	96	46
8	270	285	300	3500	500	99.3	47.7
10	270	285	300	3000	500	102.6	49.3
12	270	285	300	3000	500	105.9	51
14	250	265	280	4000	500	109.3	52.7
16	250	265	280	4000	500	112.7	54.4
18	250	265	280	3600	400	116	56
20	220	235	250	3200	400	119.3	57.7
23	220	235	250	3000	400	122.6	59.3
25	200	215	230	3000	400	127.6	61.8
28	180	190	200	2500	400	132.6	64.3
30	160	170	180	2500	400	135.9	66

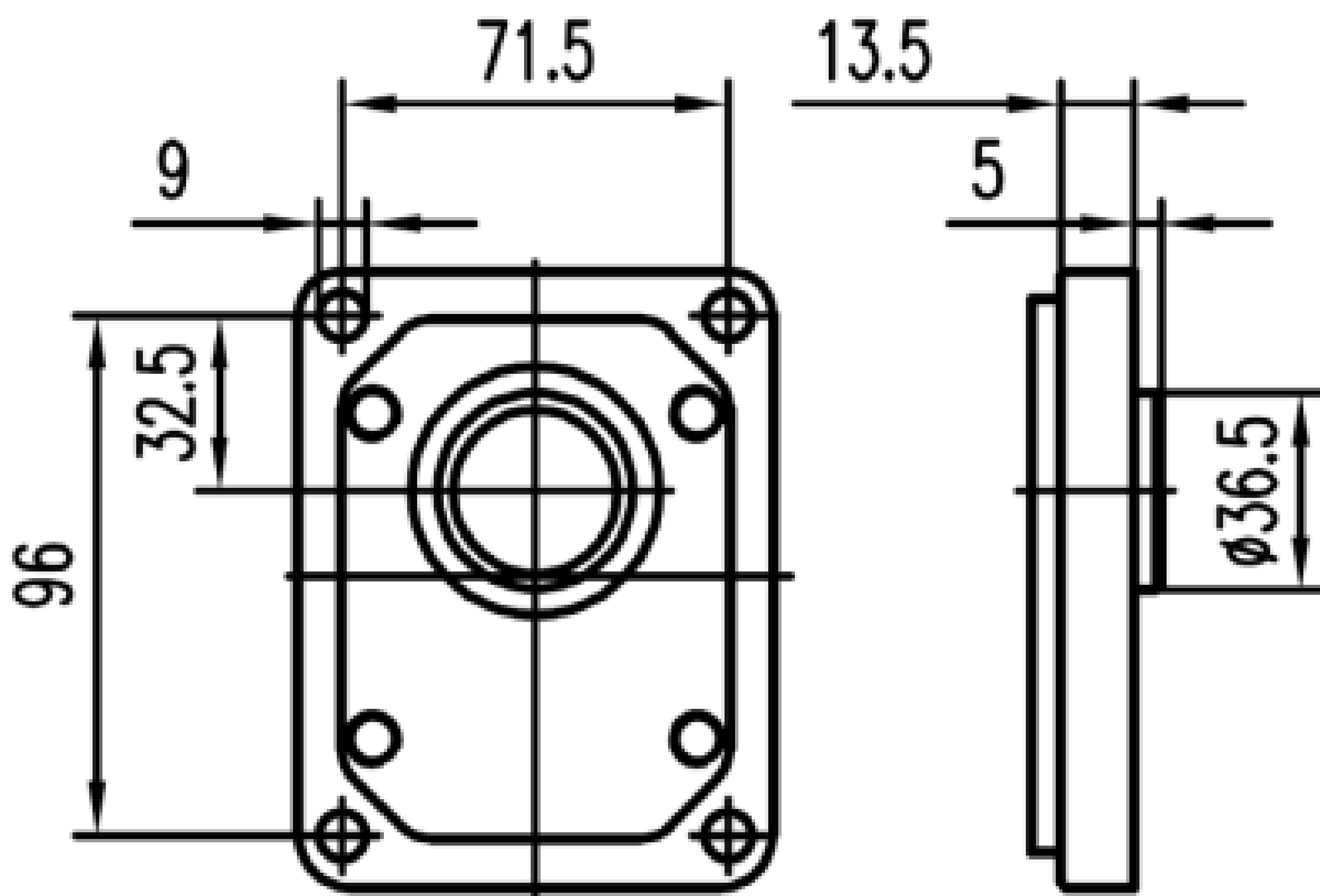
GROUP TWO HYDRAULIC GEAR PUMP

EURO 4 BOLT, 1/8 TAPER, BSP PORTS

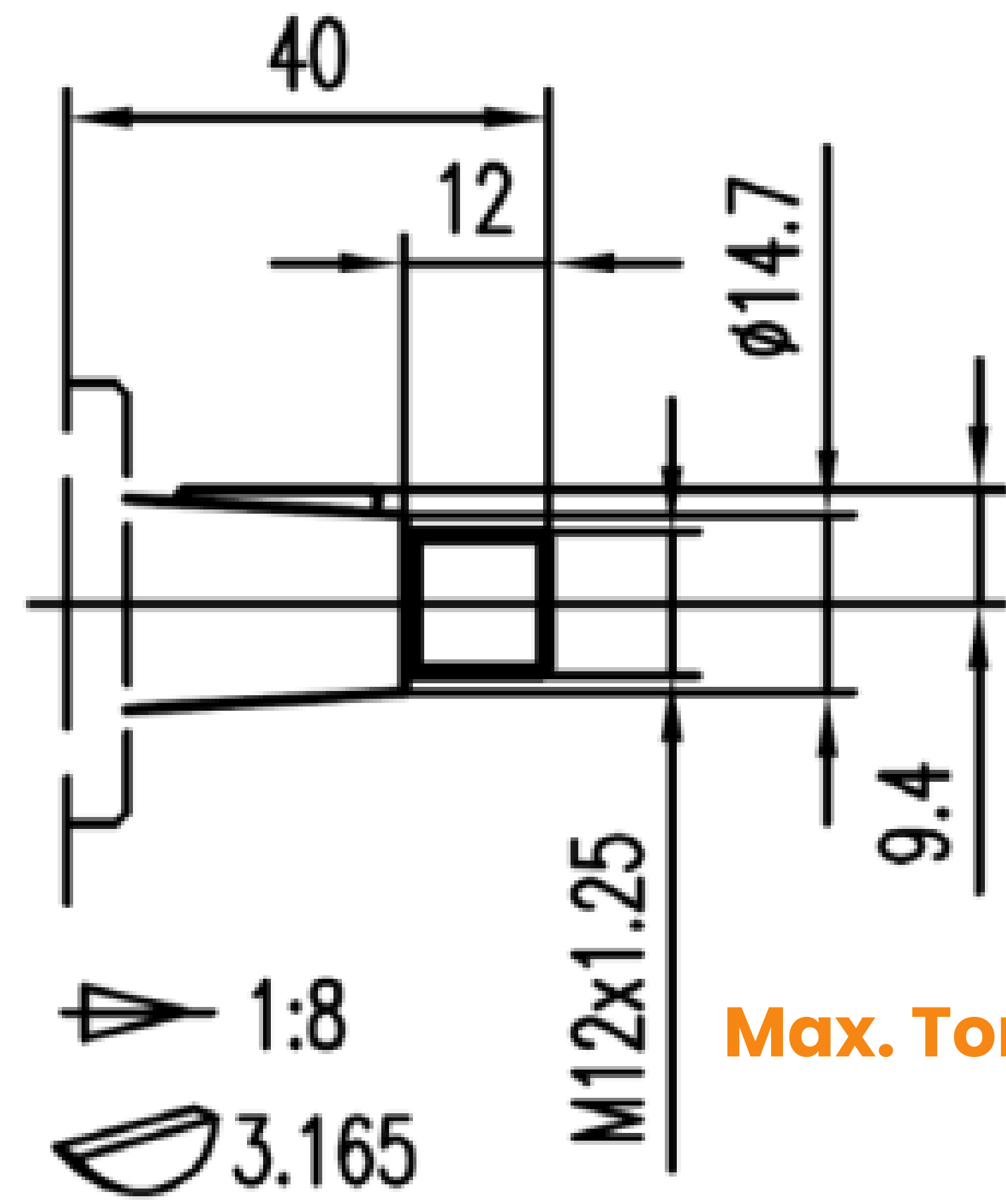


Displacement	Max Pressure			Max Speed	Min Speed	Dimensions	
	P1	P2	P3			M	L
cm ³ /rev	P1	P2	P3	r/min	r/min	mm	mm
4	270	285	300	4000	600	92.7	44.4
6	270	285	300	4000	600	96	46
8	270	285	300	3500	500	99.3	47.7
10	270	285	300	3000	500	102.6	49.3
12	270	285	300	3000	500	105.9	51
14	250	265	280	4000	500	109.3	52.7
16	250	265	280	4000	500	112.7	54.4
18	250	265	280	3600	400	116	56
20	220	235	250	3200	400	119.3	57.7
23	220	235	250	3000	400	122.6	59.3
25	200	215	230	3000	400	127.6	61.8
28	180	190	200	2500	400	132.6	64.3
30	160	170	180	2500	400	135.9	66

FRONT COVER

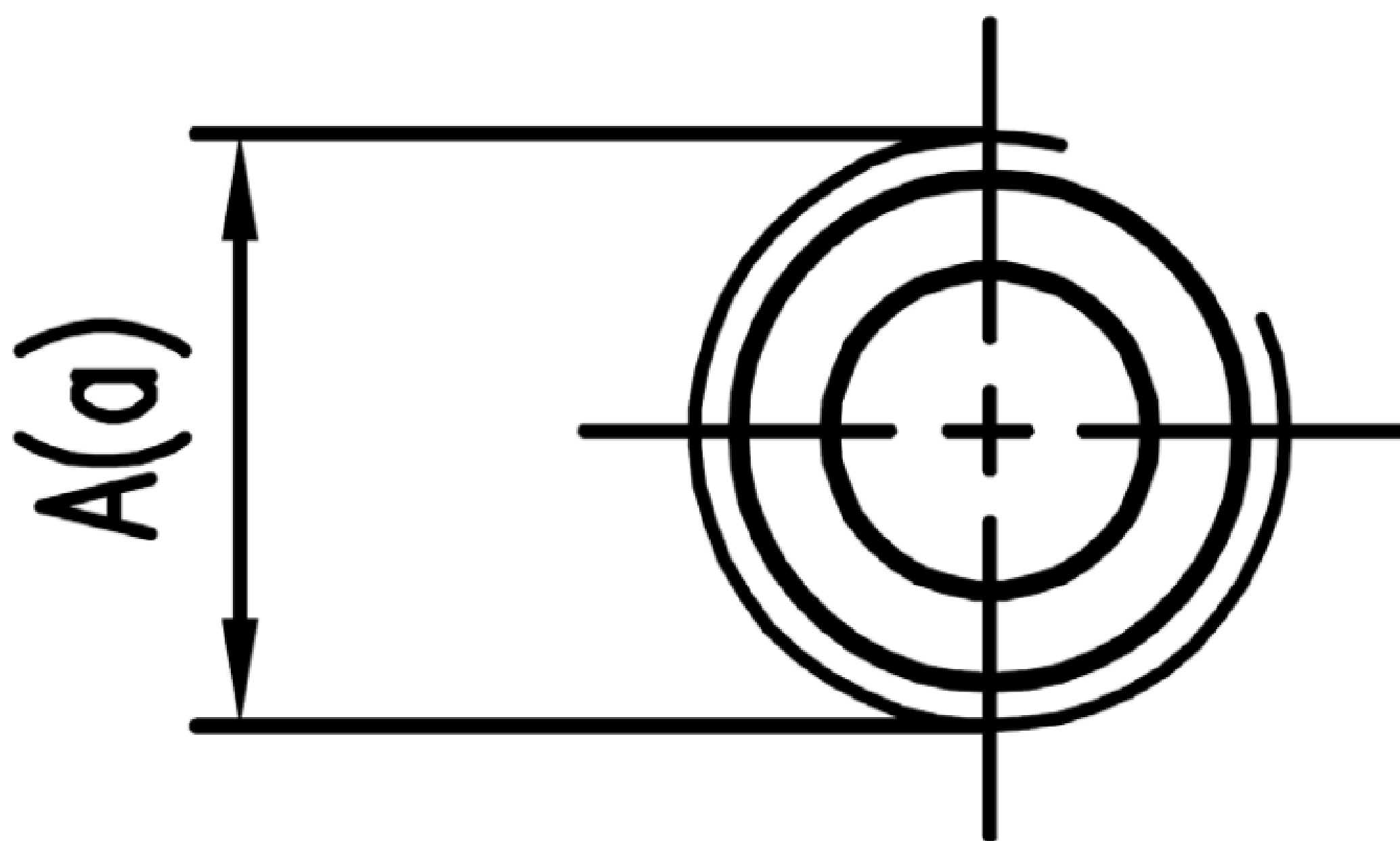


SHAFT

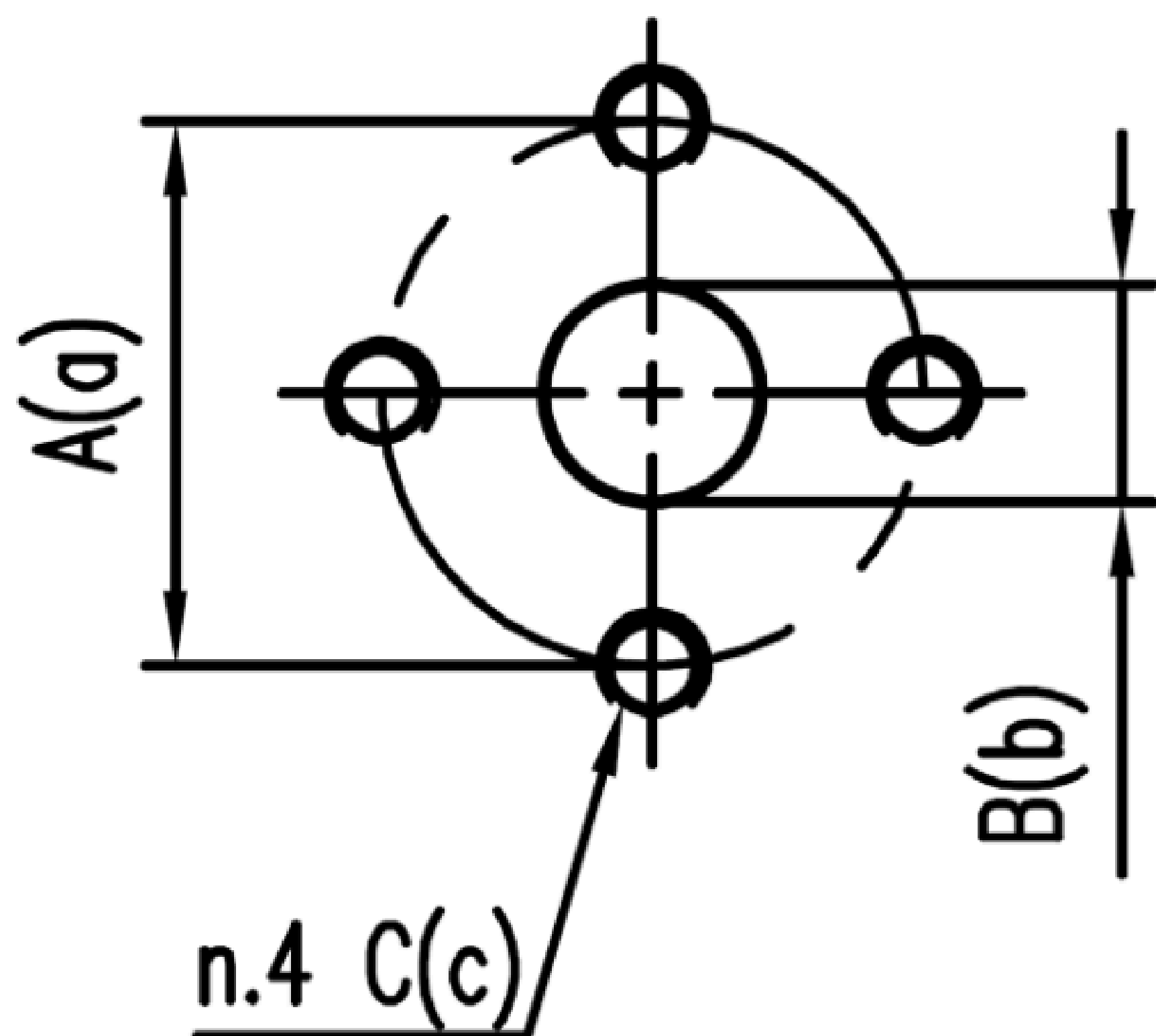


Max. Torque 200 Nm

PORTS



DISPLACEMENT	INLET	OUTLET
	A	a
4-16CC	G1/2	G3/8
18-20CC	G3/4	G1/2
23-30CC	G1	G3/4



DISPLACEMENTS	INLET			OUTLET		
	A	B	C	a	b	c
4-6CC	30	13	6	30	13	M6
8-23CC	40	20	M8	30	13	M6
25-30CC	40	21	M8	40	19	M8