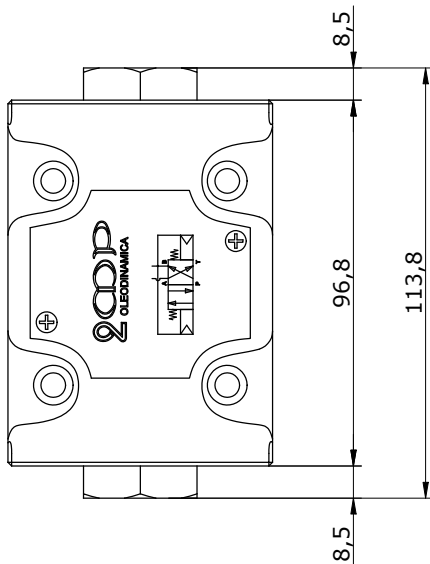
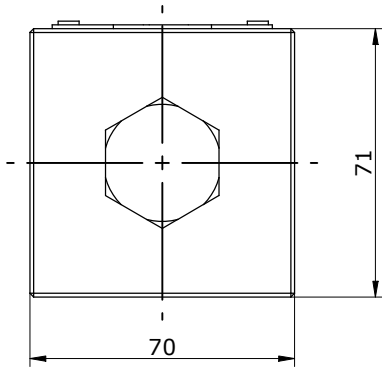
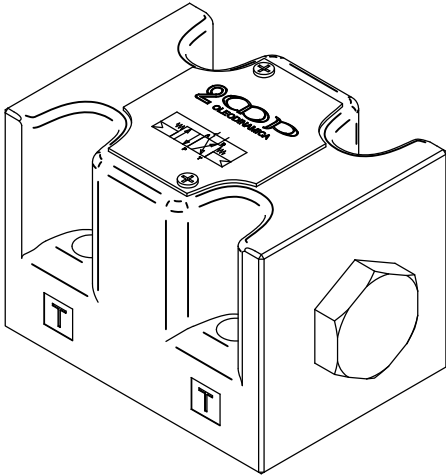
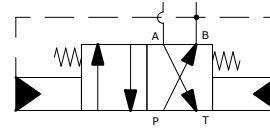


**VALVOLA AD INVERSIONE AUTOMATICA NG10**  
**SELF-REVERSING VALVE NG10**



Hydraulic diagram



**CHARACTERISTICS**

Maximum operating pressure on port P	bar	320
Maximum flow rate	l/min	100
Minimum allowed flow rate	l/min	10
Minimum allowed pressure	l/min	60
Pressure drop $\Delta p-Q$	see paragraph	
Ambient temperature range	°C	-20 / +50
Fluid temperature range	°C	-20 / +80
Fluid viscosity range	cSt	10 + 400
Fluid contamination degree	according to ISO 4406:1999 class 20/18/15	
Recommended viscosity	cSt	25
Mass	kg	3

**PRESSURE DROPS**

