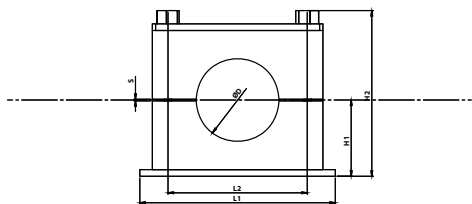


Complete Clamp



Clamp Body Colour		Clamp Body Material	
Y	Green	AL	Aluminium
N	Black	PA	Polyamide
S	Yellow	T	TPE
B	Blue	PP	Polypropylene

Polypropylene - Work Temperature -30°C to +90°C

Polyamide - Work Temperature -40°C to +120°C

Aluminium - Work Temperature Up to 300°C

Metal / Coating Type	
H	Uncoated
G	Carbon Steel Fe / Zn 8 Galvanized
F	Znph Phosphated
SS	AISI 316 Stainless Steel

Our stocked clamps are made from green polypropylene with carbon steel galvanized metal base.

Contact us if you're interested in alternative colours or materials.

Group	Product Code	O.D of Pipe mm	Nominal Bore Pipe Inches	Dimension Table					
				L1	L2	H1	H2	S min.	Width
1	HBKPPAS0106	6		74	33	24	55	0,6	30
	HBKPPAS0106,4	6,4							
	HBKPPAS0108	8							
	HBKPPAS0109,5	9,5							
	HBKPPAS0110	10	1/8"						
	HBKPPAS0112	12							
	HBKPPAS0112,7	12,7							
	HBKPPAS0113,5	13,5	1/4"						
	HBKPPAS0114	14							
	HBKPPAS0115	15							
	HBKPPAS0116	16							
	HBKPPAS0117,2	17,2	3/8"						
2	HBKPPAS0219	19		87	45	32	71	0,6	30
	HBKPPAS0220	20							
	HBKPPAS0221,3	21,3	1/2"						
	HBKPPAS0222	22							
	HBKPPAS0225	25							
	HBKPPAS0225,4	25,4							
	HBKPPAS0226,9	26,9	3/4"						
	HBKPPAS0228	28							
3	HBKPPAS0330	30		100	60	38	83	0,6	30
	HBKPPAS0332	32							
	HBKPPAS0333,7	33,7	1"						
	HBKPPAS0335	35							
	HBKPPAS0338	38							
	HBKPPAS0340	40							
	HBKPPAS0341,3	41,3							
	HBKPPAS0342	42	1-1/4"						
4	HBKPPAS0438	38		140	90	54,5	117	2	45
	HBKPPAS0442	42							
	HBKPPAS0444,5	44,5							
	HBKPPAS0448,3	48,3	1-1/2"						
	HBKPPAS0450,8	50,8							
	HBKPPAS0454	54							
	HBKPPAS0455	55							
	HBKPPAS0457	57							
	HBKPPAS0457,2	57,2							
	HBKPPAS0460,3	60,3	2"						
HBKPPAS0463,5	63,5								
4	HBKPPAS0465	65		140	90	54,5	117	2	45
	HBKPPAS0470	70							