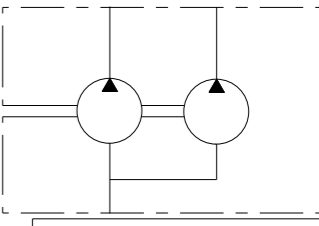


SECTION E-E  
SCALE 1:2

GREY PAINTED

Signature for approval  
Date:

Dimensions w/o tol:  
- Both machining ref.: < 400 ± 0.6; ≥ 400 ± 1  
- One or both rough ref.: ± 3  
Dimensions are in mm.



PAGE 1 OF 5

For operating condition outside those stated, please consult Casappa S.p.A. Technical sales department

|   |                                      |  |                    |
|---|--------------------------------------|--|--------------------|
| Cap.Forn./Rules Suppl.  | Trattamento Termico / Heat Treatment | Trattamento Superficiale / Surface Treatment | Prof.(mm) / Depth  |
| -   | -                                    | -  | -                  |
| Quote senza indicazione di tolleranza / Unless otherwise specified tolerances |                                      | Materiale / Material                         | Durezza / Hardness |
| GRADO DI PRECISIONE ACCURACY LEVEL  |                                      | -  | -                  |
| Disegnato/Drawn   | Approvato/Approved                   | Mod.Tecn./ Release change                    | Progetto/Project   |
| 31-05-2024  | 31-05-2024                           | -  | -                  |
| Firma Signature   | FavaR                                | CarusoD                                      | File               |
|   |                                      |  | 79938388           |
| Descrizione / Description   |                                      | Scala/Scale                                  | Formato/Size       |
| POMPA KP30.51-81/PLP20.11,2-L/EA-N7 D/FS-L-VGR01                              |                                      | 1:1  | A3                 |
| PUMP KP30.51-81/PLP20.11,2-L/EA-N7 D/FS-L-VGR01                               |                                      |  |                    |
| Codice / Code   | 79938388                             | Sostituisce / It replaces                    | -                  |
| Ind. Mod./ Index Rev.   |                                      | 0  |                    |



The information hereon is the property of CASAPPA Spa. Without written permission, any copying, transmittal to others and any use except that for which it's loaned, is prohibited.

6

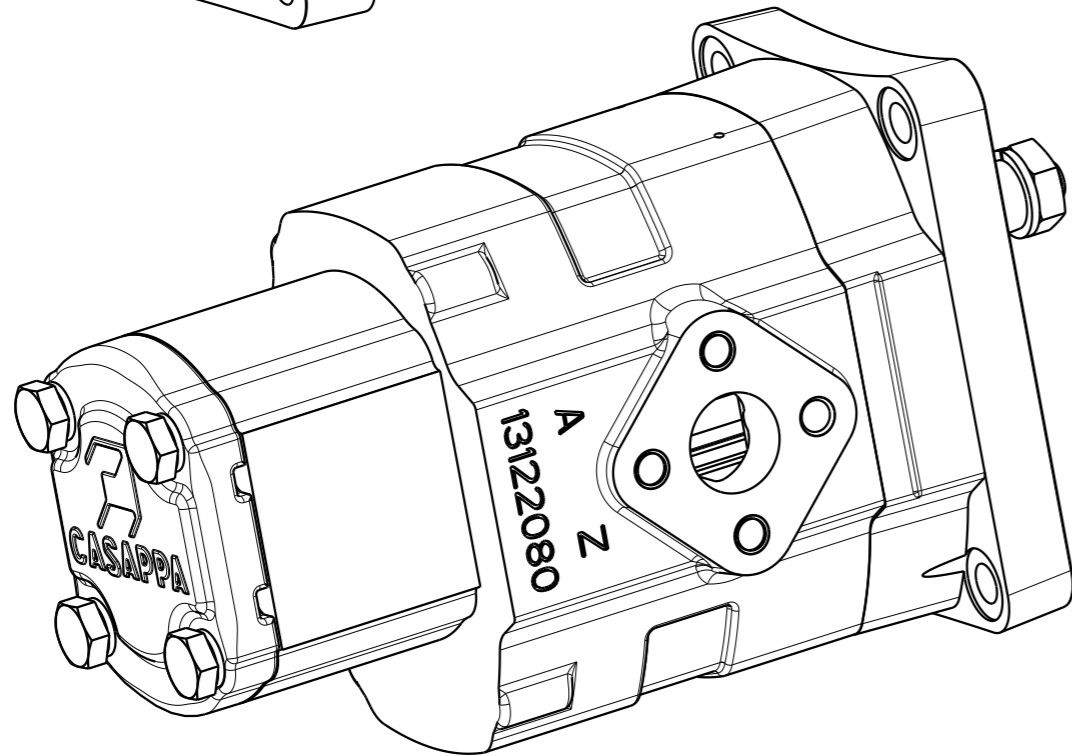
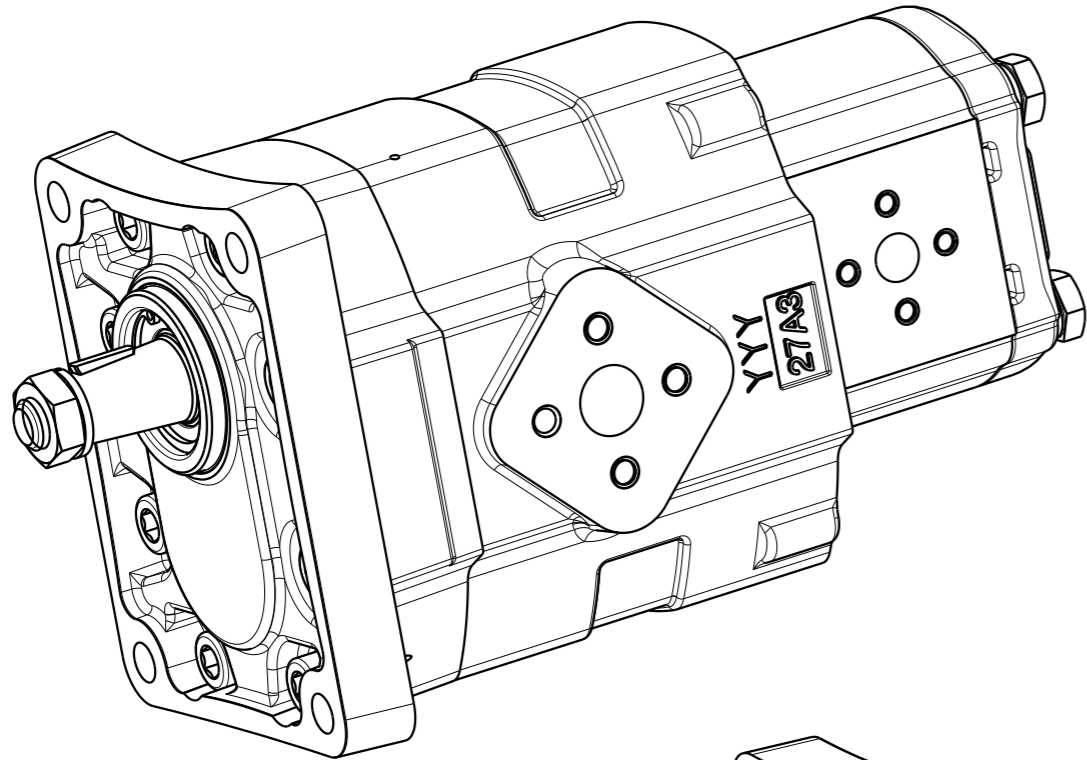
5

4

3

2

1



| PUMP DATA   |                   | I PUMP                             | II PUMP          |
|---|-------------------|------------------------------------|------------------|
| Senso di rotazione (guardando l'albero conduttore)<br>Direction of rotation (looking on drive shaft)                                  |                   | Destro (D)<br>Clockwise (D)        |                  |
| Cilindrata - Displacement   |                   | 51.83 [cm3/rev]                    | 11.23 [cm3/rev]  |
| Campo pressione di alimentazione per pompe<br>Inlet pressure range for pump   |                   | 0.7 - 3 [bar abs.]                 |                  |
| Pressione max continua - Max continuous pressure  | P1                | 230 [bar]                          | 250 [bar]        |
| Pressione max intermittente - Max intermittent pressure   | P2                | 250 [bar]                          | 280 [bar]        |
| Pressione max picco - Max peak pressure   | P3                | 270 [bar]                          | 300 [bar]        |
| Velocità - Speed  | min P1            | 350 [min <sup>-1</sup> ]           |                  |
|   | max P1            | 3000 [min <sup>-1</sup> ]          |                  |
| Guarnizioni - Seals type  |                   | NBR                                |                  |
| Temperatura minima - Min temperature  |                   | -25 [°C]                           |                  |
| Temperatura massima - Max temperature   | continous         | + 80 [°C]                          |                  |
|   | peak              | + 100 [°C]                         |                  |
| Campo di viscosità - Viscosity range  | recommended       | 12 to 100 mm <sup>2</sup> /s (cSt) |                  |
|   | permitted         | max 750 mm <sup>2</sup> /s (cSt)   |                  |
| FILTERING REQUIREMENT AND RECOMMENDED FLUID CONTAMINATION   |                   |                                    |                  |
| Pressione di lavoro [bar] - Working pressure [bar]  | $\Delta p < 140$  | 140 < $\Delta p < 210$             | $\Delta p > 210$ |
| Contaminazione classe NAS 1638 - ISO 4406:1999<br>Contamination class NAS 1638 - ISO 4406:1999  | NAS 10 - 21/19/16 | NAS 9 - 20/18/15                   | NAS 8 - 19/17/14 |
| Da ottenere con filtro $\beta_x (c) \geq 200$ secondo ISO 16889<br>Achieved with filter $\beta_x (c) \geq 200$ according to ISO 16889 | 25 $\mu m$        | 10 $\mu m$                         | 10 $\mu m$       |
| Codice del prototipo - Prototype code   | -                 |                                    |                  |
| Codice cliente - Customer code  | -                 |                                    |                  |
| Valvola di massima pressione - Relief valve   | - [bar]           |                                    |                  |
| Pressione di stand-by valvola LS - Stand-by pressure LS valve   | - [bar]           |                                    |                  |
| Peso - Weight   | 18.110 kg         |                                    |                  |
| Vernice - Painting  | VGR01             |                                    |                  |
| Trattamenti speciali - Special treatment  | -                 |                                    |                  |

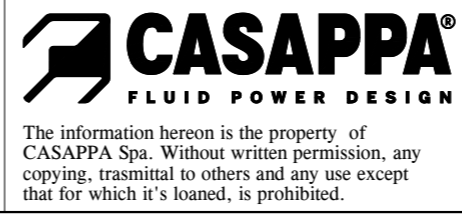
Independently from the max rated pressure values indicated in the table, the max admittable torque of the output shaft and (when applicable) of connecting hub(s) must be respected. Consequently it could be necessary to limit the max working pressures accordingly.

Indipendentemente dai valori di massima pressione riportati in tabella, devono essere rispettate le coppie massime ammissibili su alberi e/o mozzi di trascinamento. Pertanto potrebbe risultare necessario limitare le pressioni massime di esercizio di conseguenza.

Signature for approval  
\_\_\_\_\_  
Date: \_\_\_\_\_

For operating condition outside those stated, please consult Casappa S.p.A. Technical sales department

|   |                                      |  |                             |
|---|--------------------------------------|--|-----------------------------|
| Cap.Forn./Rules Suppl.  | Trattamento Termico / Heat Treatment | Trattamento Superficiale / Surface Treatment | Prof.(mm) / Depth           |
| -   | -                                    | -  | -                           |
| Quote senza indicazione di tolleranza / Unless otherwise specified tolerances |                                      | Materiale / Material                         | Durezza / Hardness          |
| GRADO DI PRECISIONE ACCURACY LEVEL  |                                      | -  | -                           |
| Disegnato/Drawn   | Approvato/Approved                   | Mod.Tecn./ Release change                    | Progetto/Project            |
| Date  | 31-05-2024                           | 31-05-2024                                   | Stato / Process             |
| Firma Signature   | FavaR                                | CarusoD                                      | File                        |
|   |                                      |  | 79938388                    |
|   |                                      |  | Codice Grezzo / Master Code |
|   |                                      |  | -                           |
| Descrizione / Description   |                                      |  | Ind. Mod./ Index Rev.       |
| POMPA KP30.51-81/PLP20.11,2-L/EA-N7 D/FS-L-VGR01                              |                                      |  | 0                           |
| PUMP KP30.51-81/PLP20.11,2-L/EA-N7 D/FS-L-VGR01                               |                                      |  |                             |
| Codice / Code   | 79938388                             |  | Sostituisce / It replaces   |
|   |                                      |  | -                           |



D

C

B

A

D

C

B

A

6

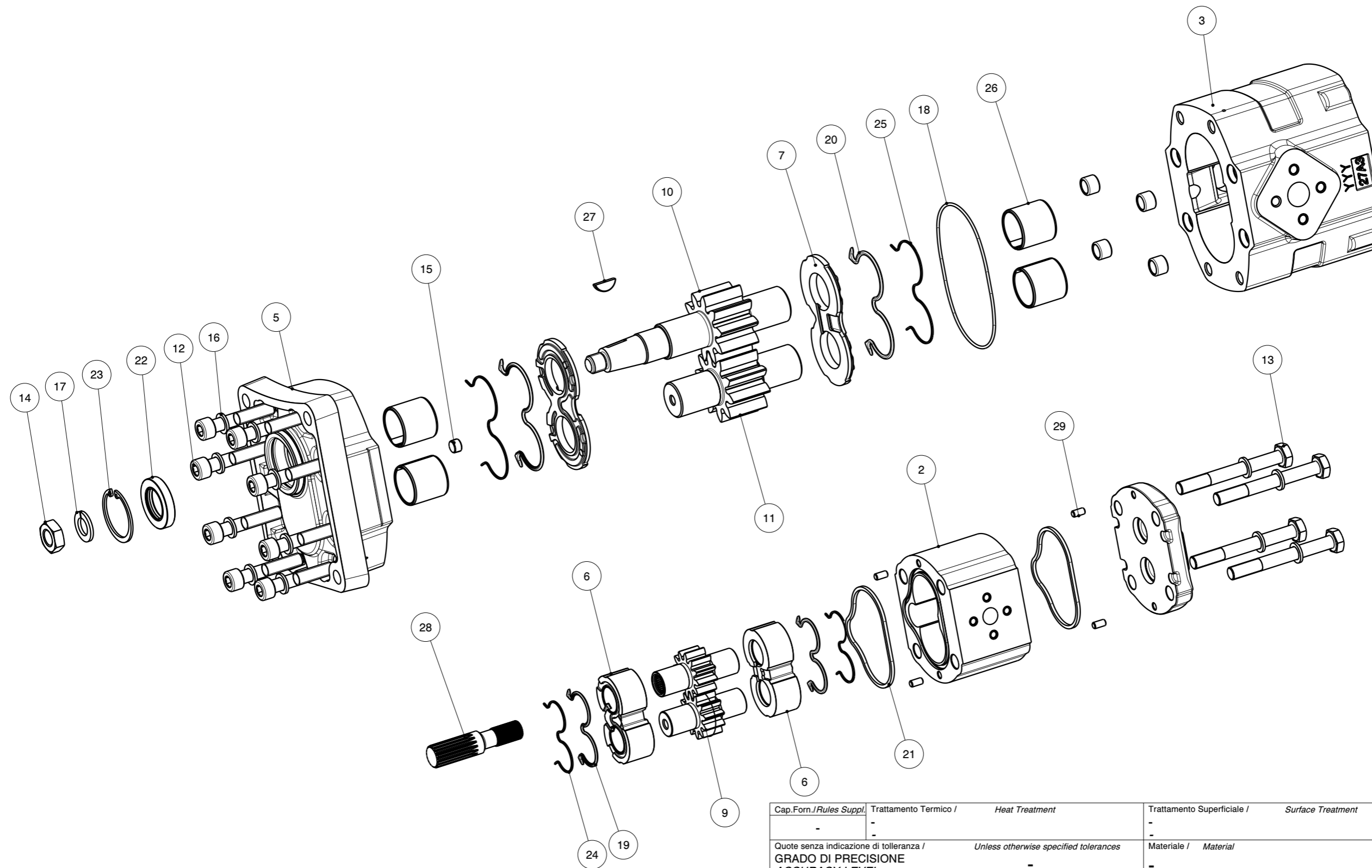
5

4

3

2

1




|  |                                       |  |                                   |
|--|---------------------------------------|--|-----------------------------------|
| Cap.Forn./Rules Suppl.   | Trattamento Termico / Heat Treatment  | Trattamento Superficiale / Surface Treatment   | Prof.(mm) / Depth                 |
| -  | -                                     | -  | -                                 |
| Quote senza indicazione di tolleranza / GRADO DI PRECISIONE ACCURACY LEVEL   | Unless otherwise specified tolerances | Materiale / Material   | Durezza / Hardness                |
| -  | -                                     | -  | -                                 |
| Disegnato/Drawn  | Approvato/Approved                    | Mod.Tecn./ Release change  | Progetto/Project                  |
| 31-05-2024   | 31-05-2024                            | -  | -                                 |
| Firma  | FavaR                                 | CarusoD  | File                              |
| Signature  |                                       |  | 79938388                          |
| <b>CASAPPA®</b><br>FLUID POWER DESIGN  |                                       | Descrizione / Description<br><b>POMPA KP30.51-81/PLP20.11,2-L/EA-N7 D/FS-L-VGR01</b><br><b>PUMP KP30.51-81/PLP20.11,2-L/EA-N7 D/FS-L-VGR01</b> |                                   |
| The information hereon is the property of CASAPPA Spa. Without written permission, any copying, trasmittal to others and any use except that for which it's loaned, is prohibited. |                                       | Codice / Code<br><b>79938388</b>   | Sostituisce / It replaces<br>-    |
|  |                                       | Scala/Scale<br><b>1:1</b>  | Formato/Size<br><b>A3</b>         |
|  |                                       |  | Ind. Mod./ Index Rev.<br><b>0</b> |

|    |          |  |    |   |    |
|----|----------|--|----|---|----|
| 19 | 39656101 |  | 2  | GUARNIZIONE PL-K20 S/D (SIC) (BZ)<br>SEAL PL-K20 S/D (SIC) (BZ)                           | 2  |
| 18 | 39580000 |  | 1  | ANELLO TOROIDALE OR 100X96X2 90GRA SH.A<br>O-RING OR 100x96x2 90GRA SH.A                  | 0  |
| 17 | 37583903 |  | 1  | ROSETTA B14 DIN 128 GEOMET<br>WASHER B14 DIN 128 GEOMET                                   | 0  |
| 16 | 37583700 |  | 12 | ROSETTA 10 (10.5x16x2) HV300<br>WASHER 10 (10.5x16x2) HV300                               | 0  |
| 15 | 37185000 |  | 1  | GRANO 1/8"-27 NPTF LEVL-SEAL<br>GRUB SCREW 1/8"-27 NPTF LEVL-SEAL                         | 2  |
| 14 | 36880000 |  | 1  | DADO M 14X1,5 UNI 5589-A-6S-FEZN12-C-1A<br>NUT M 14X1,5 UNI 5589-A-6S-FEZN12-C-1A         | 0  |
| 13 | 36593500 |  | 4  | VITE TE M 10X90 - 5737 - 10.9<br>SCREW TE M 10X90 - 5737 - 10.9                           | 0  |
| 12 | 35193500 |  | 8  | VITE TCEI M 10X55 5931-12.9<br>SCREW TCEI M 10X55 5931-12.9                               | 0  |
| 11 | 32747125 |  | 1  | INGR.CONDOTTO F-K-HD-PL30.51/F<br>DRIVEN GEAR F-K-HD-PL30.51/F                            | 2  |
| 10 | 27800110 |  | 1  | INGR.CONDOTTORE PL30.51-83-6<br>DRIVE GEAR PL30.51-83-6                                   | 9  |
| 9  | 27750030 |  | 1  | INGR.CONDOTTO F-K-PL20.11,2<br>DRIVEN GEAR F-K-PL20.11,2                                  | 6  |
| 8  | 27720826 |  | 1  | INGR.CONDOTTORE PL20.11,2-III/FS<br>DRIVE GEAR PL20.11,2-III/FS                           | 12 |
| 7  | 25935007 |  | 2  | RASAMENTO F-K-HD30/AL S/D (37GRADI) (1)<br>THRUST PLATE F-K-HD30/AL S/D (37 DEGREES) (1)  | 3  |
| 6  | 25930128 |  | 2  | RASAMENTO PL20 S/D R05 (MUS)<br>THRUST PLATE PL20 S/D R05 (MUS)                           | 2  |
| 5  | 23261018 |  | 1  | COPERCHIO ANT. K30-0-E3 T.N.<br>FRONT COVER K30-0-E3 T.N.                                 | 10 |
| 4  | 21915751 |  | 1  | COPERCHIO POST. PL20/AL<br>REAR COVER PL20/AL   | 4  |
| 3  | 21064461 |  | 1  | CORPO KP30.51-D-N7-LED/EB<br>BODY KP30.51-D-N7-LED/EB                                     | 8  |
| 2  | 17675542 |  | 1  | CORPO PL20.11.2-S7-L**/EA<br>BODY PL20.11.2-S7-L**/EA                                     | 13 |
| 1  | 02002715 |  | 1  | POMPA PLP20.11,2D*-****-L**/EA-N7-N-EL-P FS<br>PUMP PLP20.11,2D*-****-L**/EA-N7-N-EL-P FS | 0  |

| Pos. | Codice Code | Kit | Q.tà Q.ty | Descrizione Description | Indice modifica Index revision |
|------|-------------|-----|-----------|-------------------------|--------------------------------|
|------|-------------|-----|-----------|-------------------------|--------------------------------|

PAGE 4 OF 5

|   |                                      |                          |  |                             |                    |
|---|--------------------------------------|--------------------------|--|-----------------------------|--------------------|
| Cap.Forn./Rules Suppl.  | Trattamento Termico / Heat Treatment |                          | Trattamento Superficiale / Surface Treatment |                             | Prof.(mm) / Depth  |
| -   | -                                    |                          | -  |                             | -                  |
| Quote senza indicazione di tolleranza / Unless otherwise specified tolerances |                                      |                          | Materiale / Material                         |                             | Durezza / Hardness |
| GRADO DI PRECISIONE ACCURACY LEVEL  |                                      |                          | -  |                             | -                  |
| Disegnato/Drawn   | Approvato/Approved                   | Mod.Tecn./Release change | Progetto/Project                             | Stato / Process             | Scala/Scale        |
| Data Date   | 31-05-2024                           | 31-05-2024               | -  | -                           | 1:1                |
| Firma Signature   | FavaR                                | CarusoD                  | File   | Codice Grezzo / Master Code | Formato/Size       |
|   |                                      |                          | 79938388                                     | -                           | A4                 |

|  |   |  |                       |
|--|---|--|-----------------------|
|  <p>The information hereon is the property of CASAPPA Spa. Without written permission, any copying, trasmittal to others and any use except that for which it's loaned, is prohibited.</p> | Descrizione / Description   |  | Ind. Mod./ Index Rev. |
|  | POMPA KP30.51-81/PLP20.11,2-L/EA-N7 D/FS-L-VGR01<br>PUMP KP30.51-81/PLP20.11,2-L/EA-N7 D/FS-L-VGR01 |  | 0                     |
| Codice / Code  | Sostituisce / It replaces   |  |                       |
| 79938388   |   |  |                       |

D

D

C

C

B

B

A

A

|    |          |  |   |  |   |
|----|----------|--|---|--|---|
|    |          |  |   |  |   |
| 29 | 49270000 |  | 4 | SPINA MM.5x10 UNI1707 H8<br>DOWEL PIN MM.5x10 UNI1707 H8                       | 1 |
| 28 | 45371025 |  | 1 | MOZZO TRASCINAMENTO PL30/20-FS<br>HUB PL 30/20-FS                              | 3 |
| 27 | 42550000 |  | 1 | LINGUETTA 4X7.5 UNI 6606 280 HB<br>KEY 4 X 7.5 UNI 6606 -280 HB-               | 0 |
| 26 | 42159023 |  | 4 | BOCCOLA D28 L30 F30 K30 HD30 (DID)<br>SLEEVE BEAR D28 L30 F30 K30 HD30 (DID)   | 1 |
| 25 | 41387150 |  | 2 | ANTIESTRUSORE Z FP-KP-HD30 S/D<br>ANTIEXTRUSION RING Z-FP-KP-HD30 S/D          | 4 |
| 24 | 41387101 |  | 2 | ANTIESTRUSORE PL-K20 S/D Z (SIC) (BZ)<br>ANTIEXTRUSION PL-K20 S/D Z (SIC) (BZ) | 6 |
| 23 | 40810000 |  | 1 | ANELLO 40 UNI 7437-DIN 472<br>RING 40 UNI 7437-DIN 472                         | 0 |
| 22 | 39730000 |  | 1 | PARAOLIO BABSL 24X40X7<br>SHAFT SEAL BABSL 24X40X7                             | 1 |
| 21 | 39666200 |  | 2 | GUARNIZIONE PL 20 S7 SEZIONE QUADRATA<br>SEAL PL 20 S7 SQUARE SECTION          | 1 |
| 20 | 39656140 |  | 2 | GUARNIZIONE FP-KP-HD30 S/D<br>SEAL FP-KP-HD30 S/D                              | 2 |

PAGE 5 OF 5

|  |                 |                                      |                           |  |                             |  |              |
|--|-----------------|--------------------------------------|---------------------------|--|-----------------------------|--|--------------|
| Cap.Forn./Rules Suppl.   |                 | Trattamento Termico / Heat Treatment |                           | Trattamento Superficiale / Surface Treatment |                             | Prof.(mm) / Depth                                |              |
| -  |                 | -                                    |                           | -  |                             | -  |              |
| Quote senza indicazione di tolleranza / Unless otherwise specified tolerances  |                 |                                      |                           | Materiale / Material                         |                             | Durezza / Hardness                               |              |
| GRADO DI PRECISIONE ACCURACY LEVEL   |                 |                                      |                           | -  |                             | -  |              |
|  | Disegnato/Drawn | Approvato/Approved                   | Mod.Tecn./ Release change | Progetto/Project                             | Stato / Process             | Scala/Scale                                      | Formato/Size |
| Data Date  | 31-05-2024      | 31-05-2024                           | -                         | -  | -                           | 1:1  | A4           |
| Firma Signature  | FavaR           | CarusoD                              | -                         | File 79938388                                | Codice Grezzo / Master Code |  |              |
|  |                 |                                      |                           |  |                             | Descrizione / Description                        |              |
|  |                 |                                      |                           |  |                             | POMPA KP30.51-81/PLP20.11,2-L/EA-N7 D/FS-L-VGR01 |              |
|  |                 |                                      |                           |  |                             | PUMP KP30.51-81/PLP20.11,2-L/EA-N7 D/FS-L-VGR01  |              |
|  |                 |                                      |                           |  |                             | Ind. Mod./ Index Rev.                            |              |
|  |                 |                                      |                           |  |                             | 0  |              |
| Codice / Code  |                 |                                      |                           | Sostituisce / It replaces                    |                             |  |              |
| 79938388   |                 |                                      |                           |  |                             |  |              |
| The information hereon is the property of CASAPPA Spa. Without written permission, any copying, trasmittal to others and any use except that for which it's loaned, is prohibited. |                 |                                      |                           |  |                             |  |              |