

**MOTORI AD INGRANAGGI GRUPPO 3GM**  
**GEAR MOTORS GROUP 3GM**

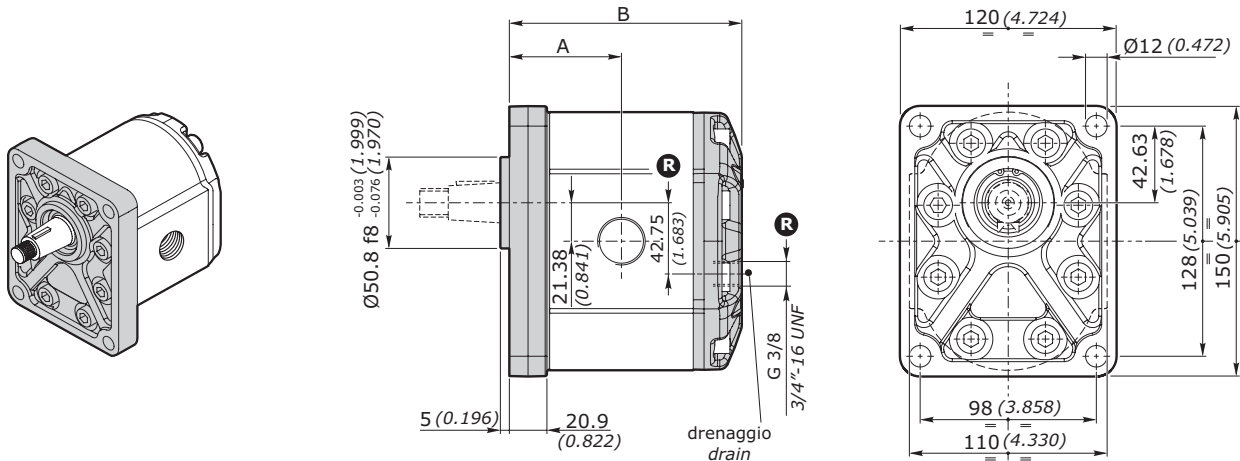
**FLANGIA EUROPEA EUR EUROPEAN FLANGE**

**FLANGIA E COPERCHIO IN GHISA - CAST IRON FLANGE AND COVER**

GRUPPO GROUP 3GM	CILINDRATA DISPLACEMENT		PRESSIONE MAX - MAX PRESSURE								VELOCITÀ MAX MAX SPEED	PORTATA MAX MAX FLOW		VELOCITÀ MIN MIN SPEED	
	cm³/giro	in³/rev	S - D		R		S - D		R			l/min	Gal/min		giri/min - rpm
			P1 bar	P1 psi	P1 bar	P1 psi	P2 bar	P2 psi	P2 bar	P2 psi					
<b>3GM 190</b>	19.3	1.2	250	3625	215	3117	265	3842	230	3335	3500	67.6	17.84	600	
<b>3GM 230</b>	23.0	1.4	250	3625	215	3117	265	3842	230	3335	3500	80.3	21.22	600	
<b>3GM 300</b>	30.2	1.8	240	3480	205	2972	255	3621	220	3190	3300	99.7	26.33	600	
<b>3GM 340</b>	33.8	2.1	240	3480	205	2972	255	3621	220	3190	3300	111.6	29.49	600	
<b>3GM 370</b>	37.5	2.3	230	3335	195	2827	245	3552	210	3045	3300	123.6	32.66	600	
<b>3GM 440</b>	44.6	2.7	220	3190	190	2755	235	3407	205	2972	3000	133.8	35.35	600	
<b>3GM 530</b>	53.0	3.2	210	3045	180	2610	225	3262	195	2827	3000	159.1	42.04	600	
<b>3GM 620</b>	62.7	3.8	190	2755	160	2320	200	2900	170	2465	2500	156.8	41.41	600	
<b>3GM 700</b>	70.5	4.3	180	2610	155	2247	190	2755	165	2392	2500	176.3	46.58	600	
<b>3GM 770</b>	77.2	4.7	170	2465	145	2102	180	2610	155	2247	2200	169.8	44.84	600	

Nota - Per valori di pressione superiori a quelli indicati contattare il Servizio Clienti.  
Note - for higher pressure values please contact our Sales Dept.

**DIMENSIONI • DIMENSIONS**



**R** Solo per motori reversibili - Only for reversible motors

GRUPPO - GROUP 3	A		B		MASSA - MASS	
	mm	inch	mm	inch	kg	lbs
<b>3GM 190</b>	62.4	2.456	128.3	5.051	7.67	16.91
<b>3GM 230</b>	63.9	2.515	131.3	5.169	7.81	17.21
<b>3GM 300</b>	66.9	2.633	137.3	5.405	8.09	17.82
<b>3GM 340</b>	68.4	2.692	140.3	5.523	8.22	18.12
<b>3GM 370</b>	69.9	2.751	143.3	5.641	8.36	18.43
<b>3GM 440</b>	72.9	2.870	149.3	5.877	8.64	19.04
<b>3GM 530</b>	76.4	3.007	156.3	6.153	8.96	19.75
<b>3GM 620</b>	80.4	3.165	164.3	6.468	9.33	20.56
<b>3GM 700</b>	86.9	3.421	170.8	6.724	9.63	21.22
<b>3GM 770</b>	92.4	3.637	176.3	6.940	9.88	21.77

**MOTORI AD INGRANAGGI GRUPPO 3GM**  
**GEAR MOTORS GROUP 3GM**

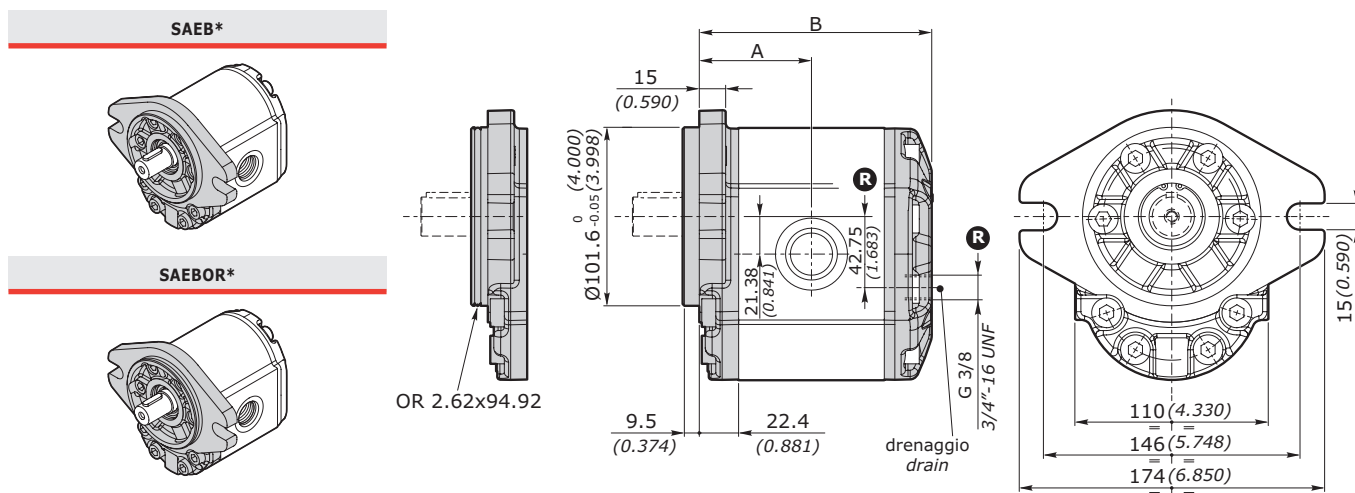
**FLANGIA SAE SAEB-SAEBOR\* SAE FLANGE**

**FLANGIA E COPERCHIO IN GHISA - CAST IRON FLANGE AND COVER**

GRUPPO GROUP 3GM	CILINDRATA DISPLACEMENT		PRESSIONE MAX - MAX PRESSURE								VELOCITÀ MAX MAX SPEED	PORTATA MAX MAX FLOW		VELOCITÀ MIN MIN SPEED
	cm³/giro	in³/rev	S - D		R		S - D		R			l/min	Gal/min	
			P1 bar	P1 psi	P1 bar	P1 psi	P2 bar	P2 psi	P2 bar	P2 psi				
<b>3GM 190</b>	19.3	1.2	250	3625	215	3117	265	3842	230	3335	3500	67.6	17.84	600
<b>3GM 230</b>	23.0	1.4	250	3625	215	3117	265	3842	230	3335	3500	80.3	21.22	600
<b>3GM 300</b>	30.2	1.8	240	3480	205	2972	255	3621	220	3190	3300	99.7	26.33	600
<b>3GM 340</b>	33.8	2.1	240	3480	205	2972	255	3621	220	3190	3300	111.6	29.49	600
<b>3GM 370</b>	37.5	2.3	230	3335	195	2827	245	3552	210	3045	3300	123.6	32.66	600
<b>3GM 440</b>	44.6	2.7	220	3190	190	2755	235	3407	205	2972	3000	133.8	35.35	600
<b>3GM 530</b>	53.0	3.2	210	3045	180	2610	225	3262	195	2827	3000	159.1	42.04	600
<b>3GM 620</b>	62.7	3.8	190	2755	160	2320	200	2900	170	2465	2500	156.8	41.41	600
<b>3GM 700</b>	70.5	4.3	180	2610	155	2247	190	2755	165	2392	2500	176.3	46.58	600
<b>3GM 770</b>	77.2	4.7	170	2465	145	2102	180	2610	155	2247	2200	169.8	44.84	600

Nota - Per valori di pressione superiori a quelli indicati contattare il Servizio Commerciale.  
Note - for higher pressure values please contact our Sales Dpt.

**DIMENSIONI • DIMENSIONS**



**R** Solo per motori reversibili - Only for reversible motors

\* Contattare il servizio commerciale. / Available soon. Please contact our Sales Dpt.

GRUPPO - GROUP 3	A		B		MASSA - MASS	
	mm	inch	mm	inch	kg	lbs
<b>3GM 190</b>	62.4	2.456	128.3	5.051	7.67	16.91
<b>3GM 230</b>	63.9	2.515	131.3	5.169	7.81	17.21
<b>3GM 300</b>	66.9	2.633	137.3	5.405	8.09	17.82
<b>3GM 340</b>	68.4	2.692	140.3	5.523	8.22	18.12
<b>3GM 370</b>	69.9	2.751	143.3	5.641	8.36	18.43
<b>3GM 440</b>	72.9	2.870	149.3	5.877	8.64	19.04
<b>3GM 530</b>	76.4	3.007	156.3	6.153	8.96	19.75
<b>3GM 620</b>	80.4	3.165	164.3	6.468	9.33	20.56
<b>3GM 700</b>	86.9	3.421	170.8	6.724	9.63	21.22
<b>3GM 770</b>	92.4	3.637	176.3	6.940	9.88	21.77

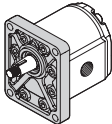
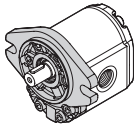
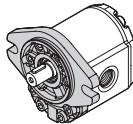
**MOTORI AD INGRANAGGI GRUPPO 3GM**  
**GEAR MOTORS GROUP 3GM**
**CODICE ORDINAZIONE • ORDER CODE**
**3GM - G - 340 - D - EUR - H - N - 10 - 0 - G**

SIGLA - CODE	TIPO - TYPE	DESCRIZIONE - DESCRIPTION	PAGINA - PAGE
<b>3GM</b>	Tipo motore <i>Motor type</i>	Motore - gruppo 3 <i>Motor - group 3</i>	102
<b>G</b>	Materiale flangia e coperchio <i>Flange and cover material</i>	<b>G</b> = Ghisa / <i>Cast iron</i>	159
<b>340</b>	Cilindrata <i>Displacement</i>	Cilindrata = 33.8 cm <sup>3</sup> /g <i>Displacement = 2.10 in<sup>3</sup>/rev</i>	102
<b>D</b>	Senso di rotazione <i>Rotation wise</i>	<b>D</b> = Rotazione destra / <i>Clockwise rotation</i> <b>S</b> = Rotazione sinistra / <i>Anticlockwise rotation</i> <b>R</b> = Reversibile / <i>Reversible</i> <b>X</b> = Reversibile con drenaggio interno <i>Reversible with internal drain</i>	104
<b>EUR</b>	Tipo Flangia <i>Flange type</i>	Flangia standard europea <i>European standard flange</i>	159
<b>H</b>	Tipo anello di tenuta <i>Seal ring type</i>	Vedi tabella compatibilità <i>See compatibility table</i>	
<b>N</b>	Tipo guarnizione <i>Gasket type</i>	<b>N</b> = NBR <b>V</b> = Viton	160
<b>10</b>	Tipo Albero <i>Shaft type</i>	Vedi tabella compatibilità <i>See compatibility table</i>	160
<b>0</b>	Posizione connessione <i>Connection position</i>	Vedi tabella compatibilità <i>See compatibility table</i>	162
<b>G</b>	Tipo connessione <i>Connection type</i>	Vedi tabella compatibilità <i>See compatibility table</i>	163



**MOTORI AD INGRANAGGI GRUPPO 3GM**  
**GEAR MOTORS GROUP 3GM**

**TIPOLOGIA FLANGIA • FLANGE TYPE**

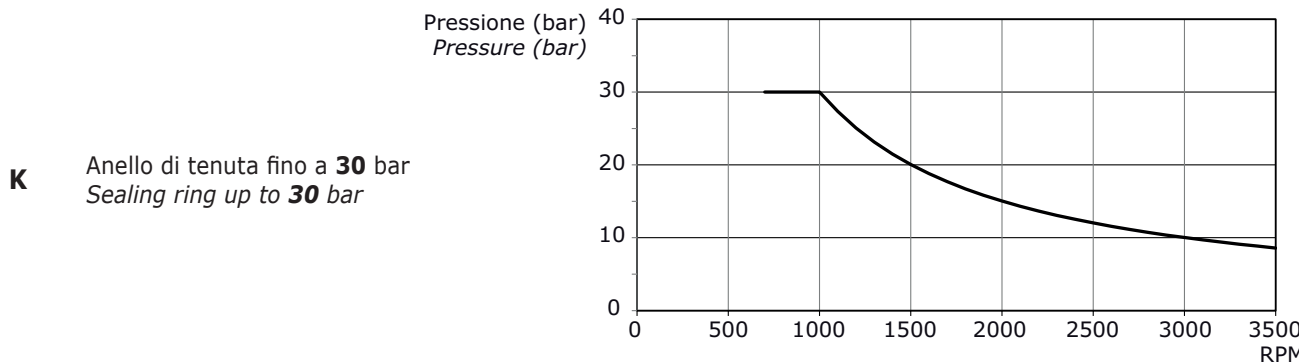
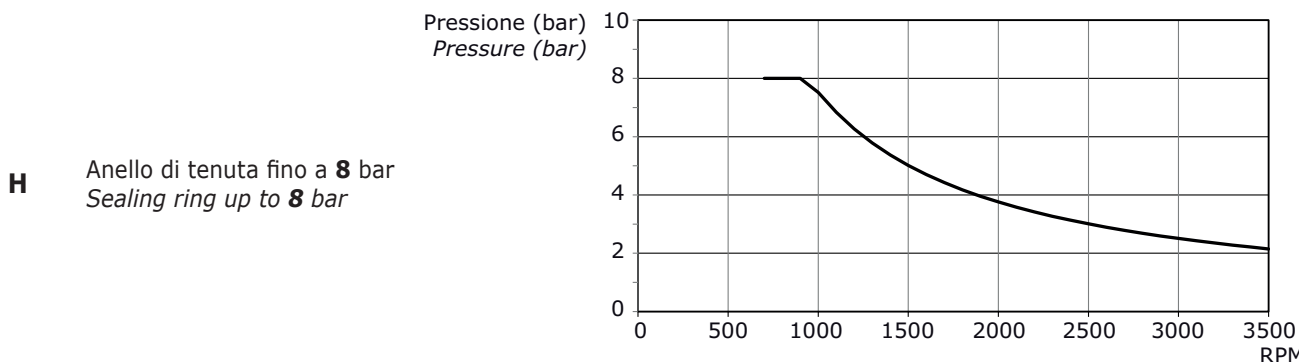
	EUR	SAEB*	SAEBOR*
<b>3GM</b>			
<b>A</b> alluminio aluminium	non disponibile not available	non disponibile not available	non disponibile not available
<b>G</b> ghisa cast iron	◇	◇	◇

◇ = Combinazione standard - Standard combination

\* Contattare il servizio commerciale. / Available soon. Please contact our Sales Dpt.

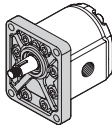
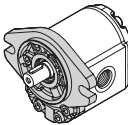
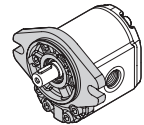
**ANELLO DI TENUTA • SEAL RING**

SIGLA - CODE	TIPO - TYPE	DIAGRAMMA - DIAGRAM
--------------	-------------	---------------------



**MOTORI AD INGRANAGGI GRUPPO 3GM**  
**GEAR MOTORS GROUP 3GM**

**COMBINAZIONE FLANGIA - ANELLO DI TENUTA - GUARNIZIONE • FLANGE - SEAL RING - GASKET COMBINATION**

<b>3GM</b>		EUR			SAEB*			SAEBOR*		
										
		Anello - seal ring			Anello - seal ring			Anello - seal ring		
	H	K	W	H	K	W	H	K	W	
NBR	<b>N</b>	◇	◇	◇	◇	◇	◇	◇	◇	◇
Viton	<b>V</b>	●	●	●	●	●	●	●	●	●

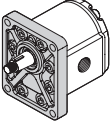
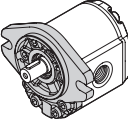
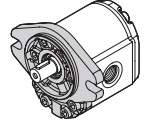
esempio • example: **3GM - G - 340 - D - EUR - H - N - 10 - 0 - G**

**EUR** = flangia europea std / Std European flange

**H** = Anello tenuta fino a 8 bar / Seal ring up to 8 bar

**N** = guarnizione in NBR / NBR o-ring

**COMBINAZIONE ALBERO - FLANGIA • SHAFT - FLANGE COMBINATION**

<b>3GM</b>		EUR	SAEB*	SAEBOR*
				
<b>10</b> Conico 1:8 Tapered 1:8	◇	●	●	
<b>13</b> Cilindrico SAEB SAEB Parallel shaft	●	◇	◇	
<b>14</b> Scanalato SAEB 13T (38.2) SAEB 13T splined (38.2)	●	◇	◇	
<b>14R</b> Scanalato SAEB 13T (44.7) SAEB 13T splined (44.7)	●	●	●	

◇ = Combinazione standard - Standard combination

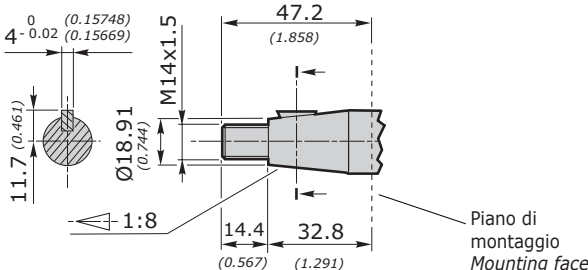
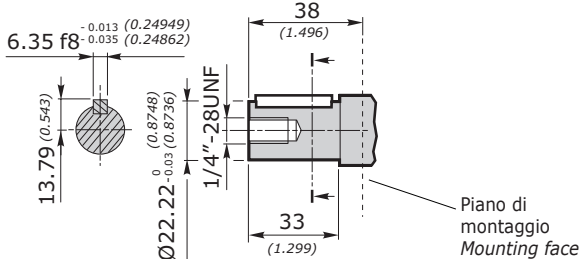
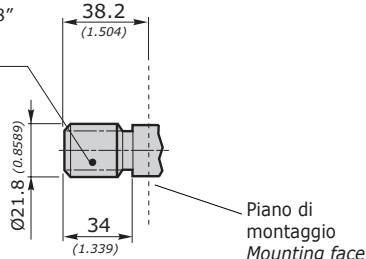
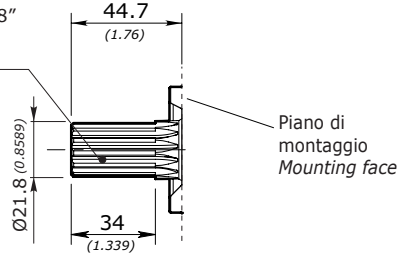
● = Combinazione disponibile - Available combination

\* Contattare il Servizio Commerciale. / Available soon. Please contact our Sales Dpt.

**MOTORI AD INGRANAGGI GRUPPO 3GM**  
**GEAR MOTORS GROUP 3GM**

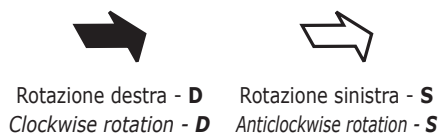
**3GM**

DIMENSIONI ALBERO - SHAFT DIMENSIONS

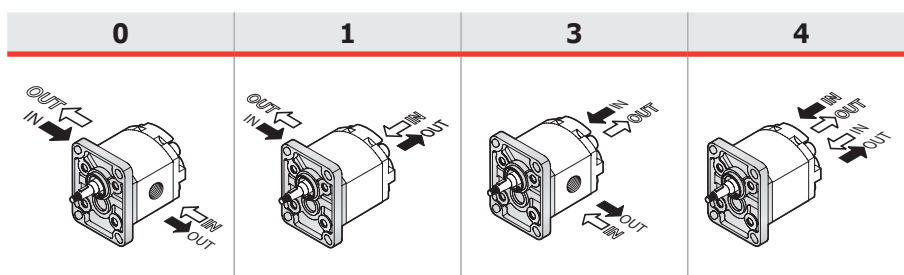
<p><b>10</b>                      Conico 1:8                      Tapered 1:8</p> <p>Coppia 240 Nm                      Torque 178 ft-lbs</p>	 <p>Disponibile per - available for: <b>EUR - SAEB - SAEBOR</b></p>
<p><b>13</b>                      Cilindrico SAEB                      SAEB Parallel shaft</p> <p>Coppia 200 Nm                      Torque 148 ft-lbs</p>	 <p>Disponibile per - available for: <b>EUR - SAEB - SAEBOR</b></p>
<p><b>14</b>                      Scanalato SAEB                      13T (38.2)                      SAEB 13T                      splined (38.2)</p> <p>Coppia 270 Nm                      Torque 200 ft-lbs</p>	 <p>Profilo scanalato 7/8"                      SAE 16/32 DP                      n. Denti =13                      Splined profile 7/8"                      SAE 16/32 DP                      nr. of teeth = 13</p> <p>Disponibile per - available for: <b>EUR - SAEB - SAEBOR</b></p>
<p><b>14R</b>                      Scanalato SAEB                      13T (44.7)                      SAEB 13T                      splined (44.7)</p> <p>Coppia 270 Nm                      Torque 200 ft-lbs</p>	 <p>Profilo scanalato 7/8"                      SAE 16/32 DP                      n. Denti =13                      Splined profile 7/8"                      SAE 16/32 DP                      nr. of teeth = 13</p> <p>Disponibile per - available for: <b>EUR - SAEB - SAEBOR</b></p>

**MOTORI AD INGRANAGGI GRUPPO 3GM**  
**GEAR MOTORS GROUP 3GM**

**POSIZIONE CONNESSIONE PER MOTORI (D-S) • CONNECTION POSITION FOR (D-S) MOTORS**



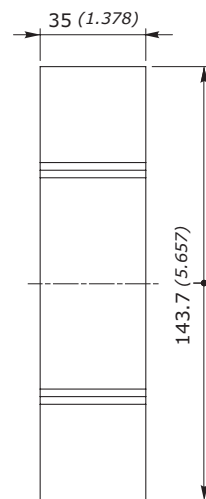
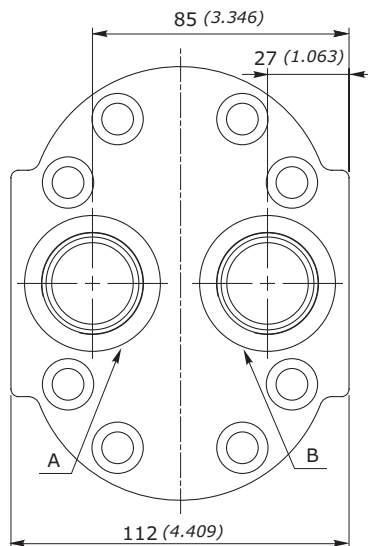
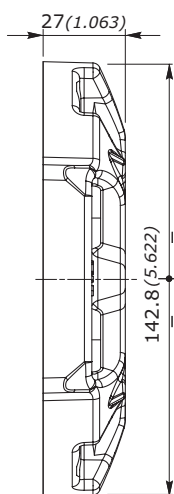
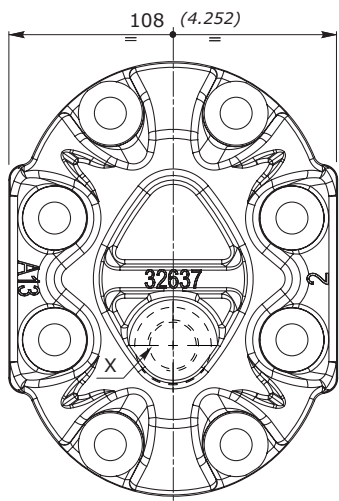
**POSIZIONE CONNESSIONE PER MOTORI (R) • CONNECTION POSITION FOR (R) MOTORS**



**COPERCHIO STANDARD • STANDARD COVER**

Per posizione **0**  
For position **0**

Per posizioni **1, 3, 4**  
For position **1, 3, 4**



CONNESSIONI / CONNECTION	
X	
<b>GAS</b>	G 3/8
<b>SAE</b>	SAE 8

CONNESSIONI / CONNECTION		
	A	B
<b>GAS</b>	G 1	G 1
<b>SAE</b>	SAE 16	SAE 12

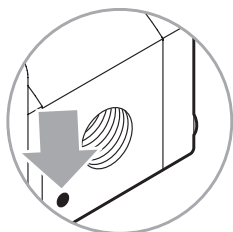
NOTA - (X) Coperchio standard disponibile con drenaggio G 3/8 e SAE 8 contattare il Servizio Commerciale.

Note - (X) Available standard cover with drain G 3/8 and SAE 8. Please contact our Sales Dpt.

**MOTORI AD INGRANAGGI GRUPPO 3GM**  
**GEAR MOTORS GROUP 3GM**

**TIPO CONNESSIONE PER MOTORI D-S • CONNECTION TYPE FOR D-S MOTORS**

Le connessioni rappresentate corrispondono alle versioni standard; per connessioni differenti, contattare il nostro Ufficio Commerciale. *The connection types shown correspond to standard configurations; for different applications contact our Commercial Dept.*



Il segno sul corpo indica il lato scarico per i motori  
 The sign on the body identifies the outlet side for the motors

**IN = INGRESSO - INLET**  
**OUT = SCARICO - OUTLET**

3GM		POSIZIONE CONNESSIONE - CONNECTION POSITION			
		0	1	3	4
GAS	<b>G</b>	◇	◇	◇	◇
UNF	<b>W</b>	◇	◇	◇	◇
FLANGIATE FLANGED	<b>T</b>	◇			
	<b>N</b>	◇			
	<b>F</b>	◇			

GAS	UNI ISO 228/1	SIGLA CODE	CIL. DISPL.	SCARICO - OUTLET OUT			INGRESSO - INLET IN		
				A	B	↻	A	B	↻
	G	G	190	G 1"	20 [mm] 0.788 [inch]	70 [Nm] 620 [in.lbs]	G 3/4"	17 [mm] 0.670 [in.lbs]	60 [mm] 531 [in.lbs]
			230						
			300						
			340						
			370						
			440						
			530						
			620						
			700						
770									

UNF	ANSI/ASME B1.1	SIGLA CODE	CIL. DISPL.	SCARICO - OUTLET OUT			INGRESSO - INLET IN		
				A	B	↻	A	B	↻
	W	W	190	SAE 16 1"5/16-12 UN	20 [mm] 0.788 [inch]	70 [Nm] 620 [in.lbs]	SAE 12 1"1/16-12 UN	20 [mm] 0.788 [inch]	60 [Nm] 531 [in.lbs]
			230						
			300						
			340						
			370						
			440						
			530						
			620						
			700						
770									



**MOTORI AD INGRANAGGI GRUPPO 3GM**  
**GEAR MOTORS GROUP 3GM**

FLANGIATE FLANGED	ISO/R 262	SIGLA CODE	CIL. DISPL.	SCARICO - OUTLET OUT					INGRESSO - INLET IN				
				A	B	C	D		A	B	C	D	
	T	190											
		230											
		300											
		340											
		370	26	55	M8	16	15	18	55	M8	16	15	
		440	[mm] 1.024	[mm] 2.167		[mm] 0.630	[Nm] 133	[mm] 0.709	[mm] 2.167		[mm] 0.630	[Nm] 133	
		530	[inch]	[inch]		[inch]	[in.lbs]	[inch]	[inch]		[inch]	[in.lbs]	
		620											
		700											
770													
	N	190											
		230											
		300											
		340											
		370	27	51	M10	15	20	19	40	M8	15	15	
		440	[mm] 1.064	[mm] 2.009		[mm] 0.591	[Nm] 177	[mm] 0.748	[mm] 1.575		[mm] 0.591	[Nm] 133	
		530	[inch]	[inch]		[inch]	[in.lbs]	[inch]	[inch]		[inch]	[in.lbs]	
		620											
		700											
770													

Standard Galtech

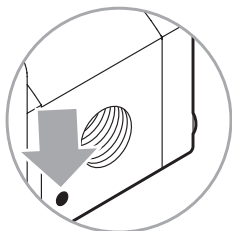
Galtech standard

FLANGIATE FLANGED	ISO/R 262	SIGLA CODE	CIL. DISPL.	SCARICO - OUTLET OUT					INGRESSO - INLET IN					
				A	B	C	D	E		A	B	C	D	E
	F	190												
		230												
		300	27	26.2	52.4	M8	15	15						
		340	[mm] 1.063	[mm] 1.031	[mm] 2.063		[mm] 0.591	[Nm] 133						
		370	[inch]	[inch]	[inch]		[inch]	[in.lbs]						
		440							24	26.2	52.4	M8	15	15
		530							[mm] 0.945	[mm] 1.031	[mm] 2.063		[mm] 0.591	[Nm] 133
		620							[inch]	[inch]	[inch]		[inch]	[in.lbs]
		700												
770														

**MOTORI AD INGRANAGGI GRUPPO 3GM**  
**GEAR MOTORS GROUP 3GM**

**TIPO CONNESSIONE PER MOTORI (R) • CONNECTION TYPE FOR (R) MOTORS**

Le connessioni rappresentate corrispondono alle versioni standard; per connessioni differenti, contattare il nostro Ufficio Commerciale. *The connection types shown correspond to standard configurations; for different applications contact our Commercial Dept.*



L'eventuale segno sul corpo dei Motori REVERSIBILI non è da considerare. *Any sign on the body of REVERSIBLE Motors has not to be considered.*

**IN = MANDATA - DELIVERY**  
**OUT = SCARICO - OUTLET**

GAS	<b>G</b>	◇	◇	◇	◇
UNF	<b>W</b>	◇	◇	◇	◇
FLANGIATE FLANGED	<b>T</b>	◇			
	<b>N</b>	◇			
	<b>F</b>	◇			

GAS	UNI ISO 228/1	SIGLA CODE	CIL. DISPL.	SCARICO - OUTLET OUT			INGRESSO - INLET IN		
				A	B	↻	A	B	↻
	G	G	190	G 1"	20 [mm] 0.788 [inch]	70 [Nm] 620 [in.lbs]	G 1"	20 [mm] 0.788 [inch]	70 [Nm] 620 [in.lbs]
			230						
			300						
			340						
			370						
			440						
			530						
			620						
			700						
			770						

UNF	ANSI/ASME B1.1	SIGLA CODE	CIL. DISPL.	SCARICO - OUTLET OUT			INGRESSO - INLET IN		
				A	B	↻	A	B	↻
	W	W	190	SAE 16 1"5/16-12 UN	20 [mm] 0.788 [inch]	70 [Nm] 620 [in.lbs]			
			230						
			300						
			340						
			370						
			440						
			530						
			620						
			700						
			770						

**MOTORI AD INGRANAGGI GRUPPO 3GM**  
**GEAR MOTORS GROUP 3GM**

FLANGIATE FLANGED	ISO/R 262	SIGLA CODE	CIL. DISPL.	SCARICO OUTLET OUT					INGRESSO - INLET IN						
				A	B	C	D		A	B	C	D			
		T	190												
			230												
			300												
			340												
			370	26	55		16	15							
			440	1.024	2.167	M8	0.630	133							
			530	[inch]	[inch]		[inch]	[in.lbs]							
			620												
			700												
			770												
		N	190												
			230												
			300												
			340												
			370	27	51		15	20							
			440	1.064	2.009	M10	0.591	177							
			530	[inch]	[inch]		[inch]	[in.lbs]							
			620												
			700												
			770												

Standard Galtech

Galtech standard

FLANGIATE FLANGED	ISO/R 262	SIGLA CODE	CIL. DISPL.	SCARICO OUTLET OUT					INGRESSO - INLET IN					
				A	B	C	D	E		A	B	C	D	E
		F	190											
			230	27	26.2	52.4		15	15					
			300	[mm]	[mm]	[mm]	M8	[mm]	[Nm]					
			340	1.063	1.031	2.063		0.591	133					
			370	[inch]	[inch]	[inch]		[inch]	[in.lbs]					
			440											
			530	42	69.8	35.6		15	15					
			620	1.654	2.748	1.402	M8	0.591	133					
			700	[inch]	[inch]	[inch]		[inch]	[in.lbs]					
			770											

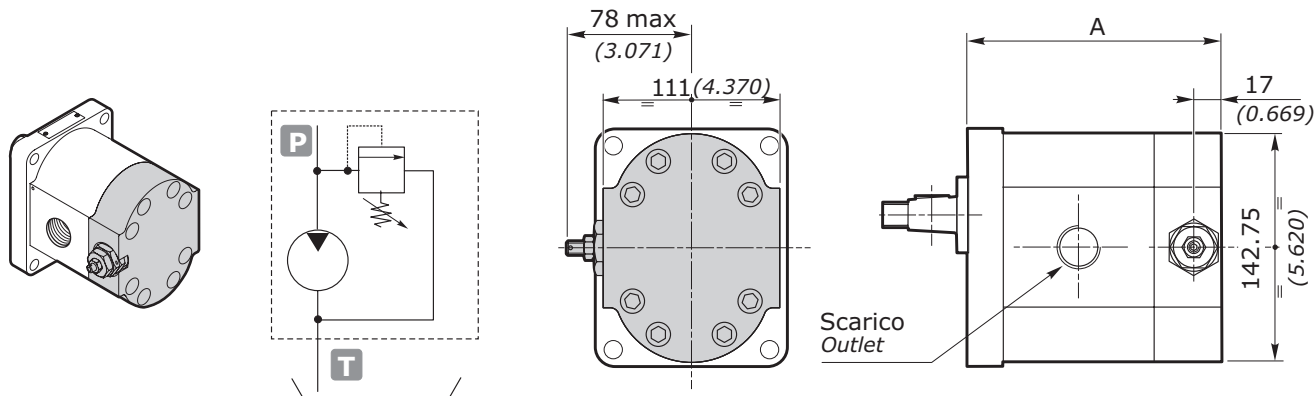
\*: Le flange non corrispondono a norma SAEJ518. Flange a norma disponibili a richiesta, contattare il Servizio Commerciale.

\*: Flanges F do not correspond to SAEJ518. Flanges SAEJ518 available on request, please contact our Sales Dpt.

**MOTORI AD INGRANAGGI GRUPPO 3GM**  
**GEAR MOTORS GROUP 3GM**

**OPZIONI • OPTIONS**

**VLPI** VALVOLA LIMITATRICE DI PRESSIONE A SCARICO INTERNO  
 PRESSURE RELIEF VALVE WITH INTERNAL EXHAUST



GRUPPO GROUP 3	A	
	EUR - SAEB - SAEBOR mm	inch
<b>3GM 190</b>	146.30	5.759
<b>3GM 230</b>	149.30	5.877
<b>3GM 300</b>	155.30	6.114
<b>3GM 340</b>	158.30	6.232
<b>3GM 370</b>	161.30	6.350
<b>3GM 440</b>	167.30	6.586
<b>3GM 530</b>	174.30	6.862
<b>3GM 620</b>	182.30	7.177
<b>3GM 700</b>	188.30	7.413
<b>3GM 770</b>	194.30	7.649

La valvola limitatrice di pressione si applica sostituendo il coperchio posteriore (previsto solo scarico interno). Il corpo VLP è disponibile in alluminio. È rappresentato un motore con rotazione destra.

*The pressure relief valve can be applied by replacing the rear cover (only internal relief is set). VLP cover is available in aluminum. The shown motor is with clockwise rotation.*

esempio • example: **3GM - A - 340 - D - EUR - H - N - 10 - 0 - G - VLPI (N 120)**

**VLPI** = Coperchio con VPL a scarico interno / Cover with VPL with internal exhaust  
**N** = Tipo molla - vedi tabella / Spring type - see table  
**120** = Taratura - vedi tabella / Setting - see table

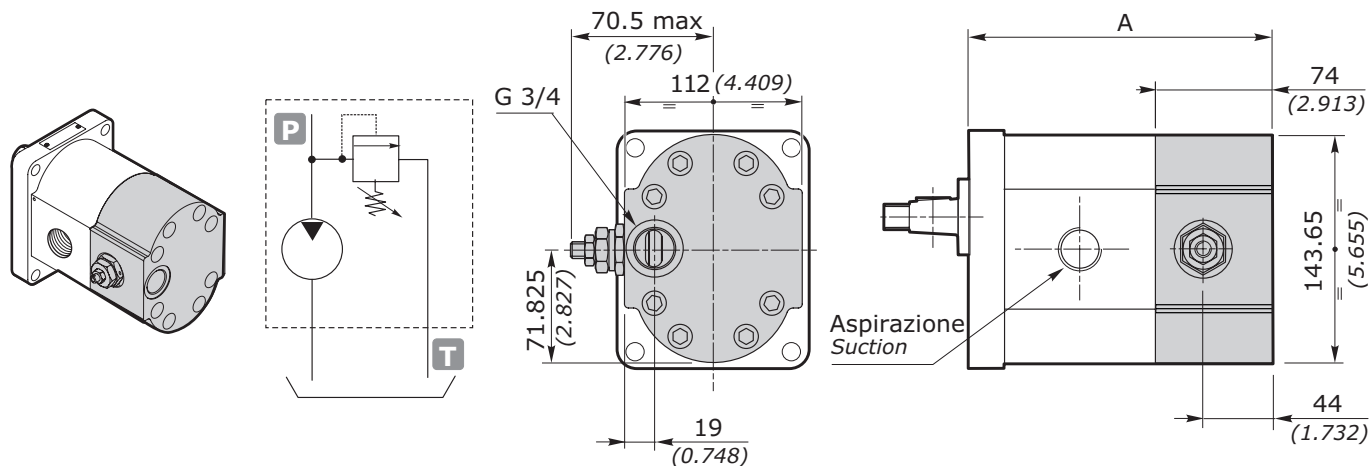
bar	30 ÷ 80	81 ÷ 200	201 ÷ 350
psi	435 ÷ 1160	1175 ÷ 2900	2915 ÷ 5075
STANDARD	70 bar (1015 psi)	150 bar (2175 psi)	250 bar (3625 psi)

NOTA: In caso di omissione del valore di taratura, esso sarà inteso standard (vedi tabella).  
 NOTE: Without setting request, it will be considered standard (see table).

**MOTORI AD INGRANAGGI GRUPPO 3GM**  
**GEAR MOTORS GROUP 3GM**

**VLPE**

VALVOLA LIMITATRICE DI PRESSIONE A SCARICO ESTERNO  
PRESSURE RELIEF VALVE WITH EXTERNAL EXHAUST



GRUPPO GROUP 3	A	
	EUR - SAEB - SAEBOR mm	inch
3GP 190	176.30	6.941
3GP 230	179.30	7.059
3GP 300	185.30	7.295
3GP 340	188.30	7.413
3GP 370	191.30	7.531
3GP 440	197.30	7.767
3GP 530	204.30	8.043
3GP 620	212.30	8.358
3GP 700	218.30	8.594
3GP 770	224.30	8.830

La valvola limitatrice di pressione si applica sostituendo il coperchio posteriore. Il coperchio VLP è disponibile in alluminio. E' rappresentato un motore con rotazione sinistra. Nei motori con rotazione destra, la valvola è dal lato opposto

*The pressure relief valve can be applied by substituting the rear cover. VLP cover is available in aluminum. The showed motor is with anticlockwise rotation. In the case of motors with clockwise rotation, the valve is on the opposite side.*

esempio • example: **3GM - A - 230 - D - EUR - B - N - 10 - 0 - G - VLPE (N 120)**

**VLPE** = Coperchio con VPL a scarico esterno / Cover with VPL with external exhaust

**N** = Tipo molla - vedi tabella / Spring type - see table

**120** = Taratura - vedi tabella / Setting - see table

TIPO - TYPE	CAMPI DI TARATURE - CALIBRATION FIELDS					
	molla bianca - white spring	B	molla nera - black spring	N	molla rossa - red spring	R
bar	30 ÷ 80		81 ÷ 200		201 ÷ 350	
psi	435 ÷ 1160		1175 ÷ 2900		2915 ÷ 5075	
STANDARD	70 bar (1015 psi)		150 bar (2175 psi)		250 bar (3625 psi)	

NOTA: In caso di omissione del valore di taratura, esso sarà inteso standard (vedi tabella).

NOTE: Without setting request, it will be considered standard (see table).