

**MOTORI AD INGRANAGGI GRUPPO 2SM**  
**GEAR MOTORS GROUP 2SM**

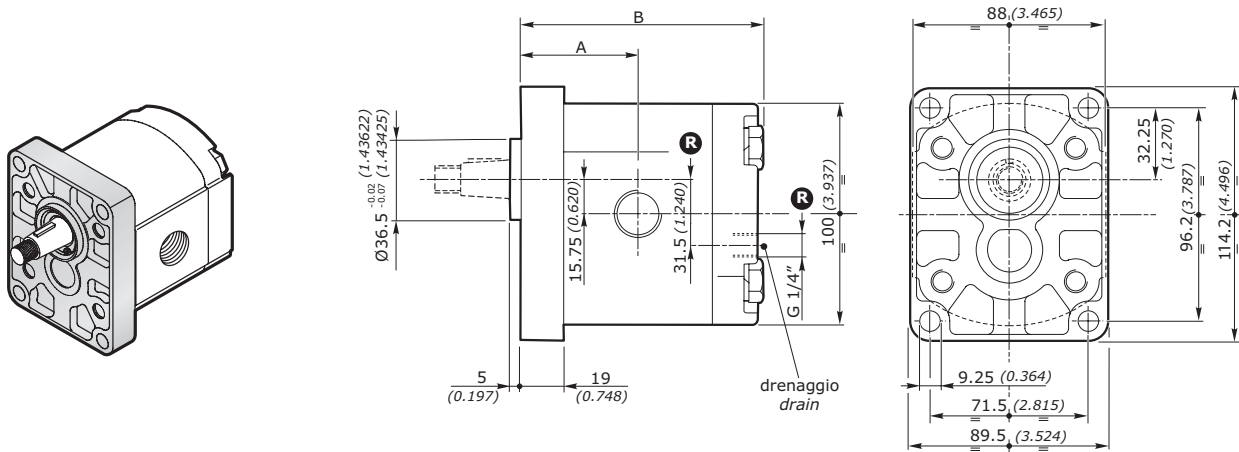
**FLANGIA EUROPEA EUR EUROPEAN FLANGE**

**FLANGIA E COPERCHIO IN ALLUMINIO - FLANGE AND COVER IN ALUMINIUM**

GRUPPO GROUP 2SM	CILINDRATA DISPLACEMENT		PRESSIONE MAX - MAX PRESSURE								VELOCITÀ MAX MAXSPEED	PORTATA MAX MAX FLOW		VELOCITÀ MIN MIN SPEED
			S - D		R		S - D		R					
	cm³/giro	in³/rev	P1 bar	P1 psi	P1 bar	P1 psi	P2 bar	P2 psi	P2 bar	P2 psi	giri/min - rpm	l/min	Gal/min	giri/min - rpm
<b>2SM 040</b>	4	0.24	250	3625	210	3045	270	3915	230	3335	4000	16	4.23	500
<b>2SM 060</b>	6	0.37	250	3625	210	3045	270	3915	230	3335	4000	24	6.34	500
<b>2SM 080</b>	8.5	0.52	250	3625	210	3045	270	3915	230	3335	3500	29.7	7.85	500
<b>2SM 110</b>	11	0.67	250	3625	210	3045	270	3915	230	3335	3500	38.5	10.17	500
<b>2SM 140</b>	14	0.85	250	3625	210	3045	270	3915	230	3335	3500	49	12.95	500
<b>2SM 160</b>	16.5	1.01	230	3335	195	2827	240	3480	205	2972	3500	57.7	15.24	500
<b>2SM 190</b>	19.5	1.19	210	3045	180	2610	220	3190	190	2755	3300	64.3	16.99	500
<b>2SM 220</b>	22.5	1.37	190	2755	160	2320	200	2900	170	2465	2800	63	16.64	500
<b>2SM 260</b>	26	1.59	170	2465	145	2102	180	2610	155	2248	2500	65	17.17	500
<b>2SM 310</b>	31.5	1.92	130	1885	110	1595	140	2030	120	1740	2200	69	18.22	500

Nota - Per valori di pressione superiori a quelli indicati contattare il Servizio Commerciale.  
Note - for higher pressure values please contact our Sales Dpt.

**DIMENSIONI • DIMENSIONS**



**R** Solo per motori reversibili - Only for reversible motors

GRUPPO - GROUP 2	A		B		MASSA - MASS	
	mm	inch	mm	inch	kg	lbs
<b>2SM 040</b>	44.4	1.748	93.0	3.661	2.30	5.07
<b>2SM 060</b>	46.0	1.811	96.3	3.791	2.45	5.40
<b>2SM 080</b>	48.1	1.894	100.5	3.957	2.60	5.73
<b>2SM 110</b>	50.2	1.976	104.6	4.118	2.70	5.95
<b>2SM 140</b>	52.7	2.075	109.6	4.315	2.80	6.17
<b>2SM 160</b>	54.8	2.157	113.8	4.480	2.95	6.51
<b>2SM 190</b>	57.3	2.256	118.8	4.677	3.10	6.84
<b>2SM 220</b>	59.8	2.354	123.8	4.874	3.25	7.17
<b>2SM 260</b>	62.7	2.469	129.6	5.102	3.40	7.50
<b>2SM 310</b>	66.9	2.636	138.0	5.437	3.61	7.96

**MOTORI AD INGRANAGGI GRUPPO 2SM**  
**GEAR MOTORS GROUP 2SM**

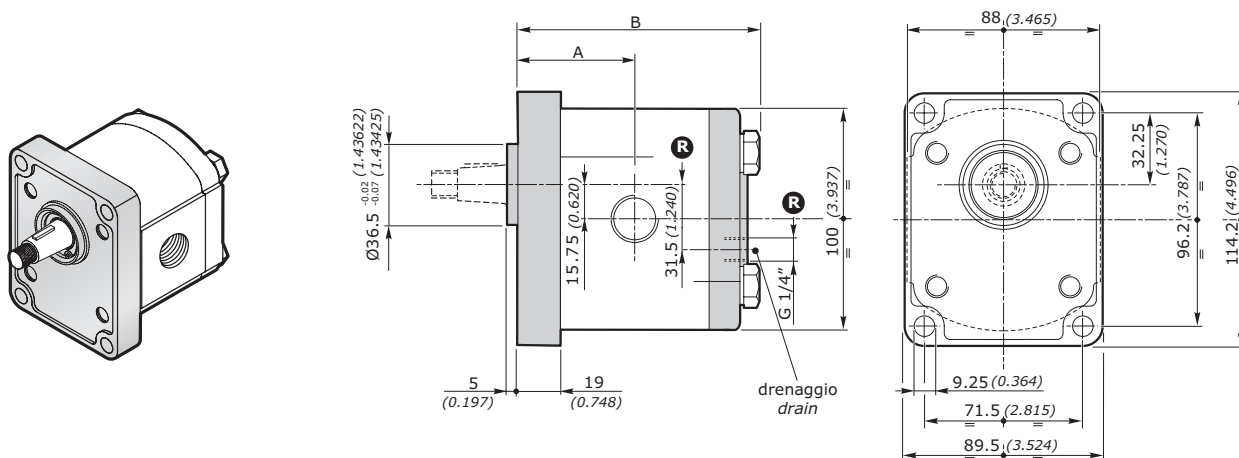
**FLANGIA EUROPEA EUR EUROPEAN FLANGE**

**FLANGIA E COPERCHIO IN GHISA - FLANGE AND COVER IN CAST IRON**

GRUPPO GROUP 2SM	CILINDRATA DISPLACEMENT		PRESSIONE MAX - MAX PRESSURE								VELOCITÀ MAX MAXSPEED	PORTATA MAX MAX FLOW		VELOCITÀ MIN MIN SPEED
			S - D		R		S - D		R					
	cm³/giro	in³/rev	P1 bar	P1 psi	P1 bar	P1 psi	P2 bar	P2 psi	P2 bar	P2 psi	giri/min - rpm	l/min	Gal/min	giri/min - rpm
<b>2SM 040</b>	4	0.24	260	3770	220	3190	280	4060	240	3480	4000	16	4.23	500
<b>2SM 060</b>	6	0.37	260	3770	220	3190	280	4060	240	3480	4000	24	6.34	500
<b>2SM 080</b>	8.5	0.52	260	3770	220	3190	280	4060	240	3480	3500	29.7	7.85	500
<b>2SM 110</b>	11	0.67	260	3770	220	3190	280	4060	240	3480	3500	38.5	10.17	500
<b>2SM 140</b>	14	0.85	260	3770	220	3190	280	4060	240	3480	3500	49	12.95	500
<b>2SM 160</b>	16.5	1.01	240	3480	205	2972	250	3625	215	3117	3500	57.7	15.24	500
<b>2SM 190</b>	19.5	1.19	220	3190	190	2755	230	3335	200	2900	3300	64.3	16.99	500
<b>2SM 220</b>	22.5	1.37	200	2900	170	2465	210	3045	180	2610	2800	63	16.64	500
<b>2SM 260</b>	26	1.59	180	2610	155	2248	190	2755	165	2392	2500	65	17.17	500
<b>2SM 310</b>	31.5	1.92	140	2030	120	1740	150	2175	130	1885	2200	69	18.22	500

Nota - Per valori di pressione superiori a quelli indicati contattare il Servizio Commerciale.  
 Note - for higher pressure values please contact our Sales Dpt.

**DIMENSIONI • DIMENSIONS**



**R** Solo per motori reversibili - Only for reversible motors

GRUPPO - GROUP 2	A		B		MASSA - MASS	
	mm	inch	mm	inch	kg	lbs
<b>2SM 040</b>	44.4	1.748	93.0	3.661	3.40	7.50
<b>2SM 060</b>	46.0	1.811	96.3	3.791	3.55	7.83
<b>2SM 080</b>	48.1	1.894	100.5	3.957	3.70	8.16
<b>2SM 110</b>	50.2	1.976	104.6	4.118	3.80	8.38
<b>2SM 140</b>	52.7	2.075	109.6	4.315	3.90	8.60
<b>2SM 160</b>	54.8	2.157	113.8	4.480	4.05	8.93
<b>2SM 190</b>	57.3	2.256	118.8	4.677	4.20	9.26
<b>2SM 220</b>	59.8	2.354	123.8	4.874	4.35	9.59
<b>2SM 260</b>	62.7	2.469	129.6	5.102	4.50	9.92
<b>2SM 310</b>	66.9	2.636	138.0	5.437	4.71	7.96

MOTORI AD INGRANAGGI **GRUPPO 2SM**  
**GEAR MOTORS GROUP 2SM**

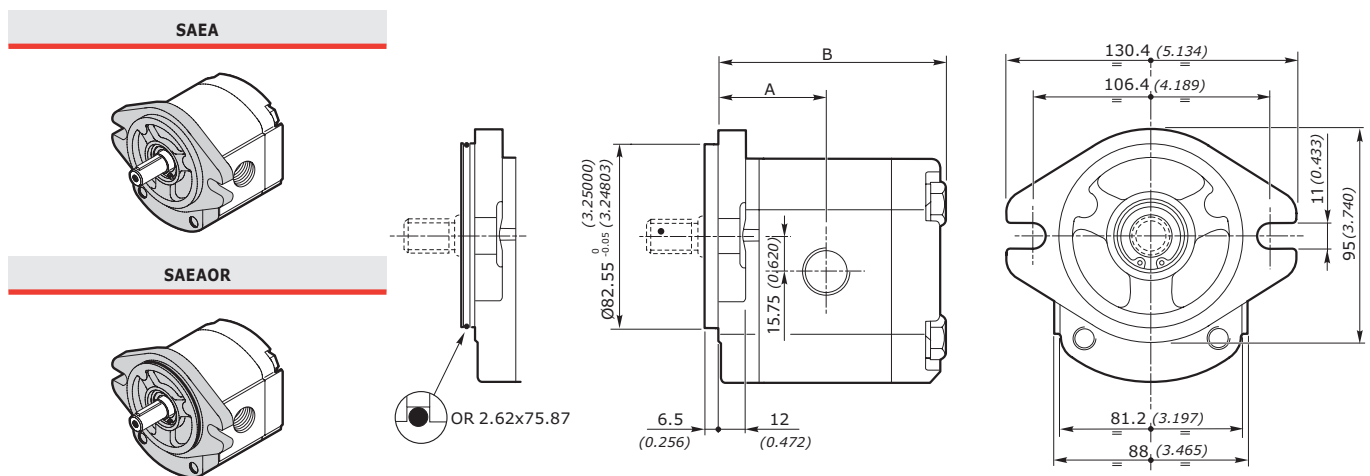
FLANGIA SAE **SAEA-SAEAOR** SAE FLANGE

FLANGIA E COPERCHIO IN ALLUMINIO - FLANGE AND COVER IN ALUMINIUM

GRUPPO GROUP 2SM	CILINDRATA DISPLACEMENT		PRESSIONE MAX - MAX PRESSURE								VELOCITÀ MAX MAXSPEED	PORTATA MAX MAX FLOW		VELOCITÀ MIN MIN SPEED	
	cm³/giro	in³/rev	S - D		R		S - D		R			l/min	Gal/min		giri/min - rpm
			P1 bar	P1 psi	P1 bar	P1 psi	P2 bar	P2 psi	P2 bar	P2 psi					
<b>2SM 040</b>	4	0.24	250	3625	210	3045	270	3915	230	3335	4000	16	4.23	500	
<b>2SM 060</b>	6	0.37	250	3625	210	3045	270	3915	230	3335	4000	24	6.34	500	
<b>2SM 080</b>	8.5	0.52	250	3625	210	3045	270	3915	230	3335	3500	29.7	7.85	500	
<b>2SM 110</b>	11	0.67	250	3625	210	3045	270	3915	230	3335	3500	38.5	10.17	500	
<b>2SM 140</b>	14	0.85	250	3625	210	3045	270	3915	230	3335	3500	49	12.95	500	
<b>2SM 160</b>	16.5	1.01	230	3335	195	2827	240	3480	205	2972	3500	57.7	15.24	500	
<b>2SM 190</b>	19.5	1.19	210	3045	180	2610	220	3190	190	2755	3300	64.3	16.99	500	
<b>2SM 220</b>	22.5	1.37	190	2755	160	2320	200	2900	170	2465	2800	63	16.64	500	
<b>2SM 260</b>	26	1.59	170	2465	145	2102	180	2610	155	2248	2500	65	17.17	500	
<b>2SM 310</b>	31.5	1.92	130	1885	110	1595	140	2030	120	1740	2200	69	18.22	500	

Nota - Per valori di pressione superiori a quelli indicati contattare il Servizio Commerciale.  
 Note - for higher pressure values please contact our Sales Dpt.

DIMENSIONI • DIMENSIONS



**R** Solo per motori reversibili - Only for reversible motors

GRUPPO - GROUP 2	A		B		MASSA - MASS	
	mm	inch	mm	inch	kg	lbs
<b>2SM 040</b>	44.4	1.748	93.0	3.661	2.30	5.07
<b>2SM 060</b>	46.0	1.811	96.3	3.791	2.45	5.40
<b>2SM 080</b>	48.1	1.894	100.5	3.957	2.60	5.73
<b>2SM 110</b>	50.2	1.976	104.6	4.118	2.70	5.95
<b>2SM 140</b>	52.7	2.075	109.6	4.315	2.80	6.17
<b>2SM 160</b>	54.8	2.157	113.8	4.480	2.95	6.51
<b>2SM 190</b>	57.3	2.256	118.8	4.677	3.10	6.84
<b>2SM 220</b>	59.8	2.354	123.8	4.874	3.25	7.17
<b>2SM 260</b>	62.7	2.469	129.6	5.102	3.40	7.50
<b>2SM 310</b>	66.9	2.636	138.0	5.437	3.61	7.96

**MOTORI AD INGRANAGGI GRUPPO 2SM**  
**GEAR MOTORS GROUP 2SM**

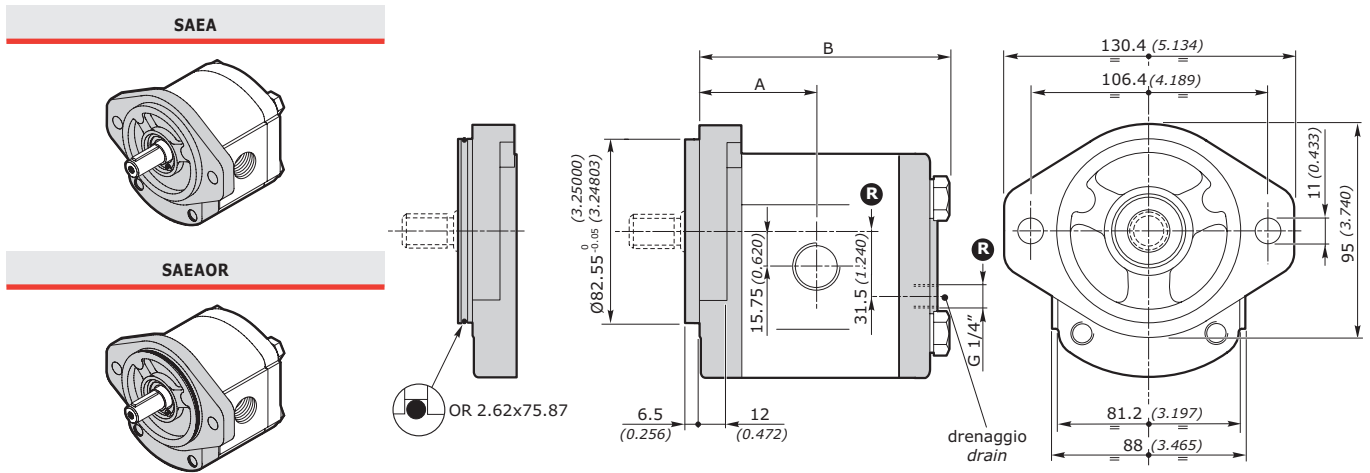
**FLANGIA SAE SAEA-SAEAOR SAE FLANGE**

**FLANGIA E COPERCHIO IN GHISA - FLANGE AND COVER IN CAST IRON**

GRUPPO GROUP 2SM	CILINDRATA DISPLACEMENT		PRESSIONE MAX - MAX PRESSURE								VELOCITÀ MAX MAXSPEED	PORTATA MAX MAX FLOW		VELOCITÀ MIN MIN SPEED
			S - D		R		S - D		R					
	cm³/giro	in³/rev	P1 bar	P1 psi	P1 bar	P1 psi	P2 bar	P2 psi	P2 bar	P2 psi	giri/min - rpm	l/min	Gal/min	giri/min - rpm
<b>2SM 040</b>	4	0.24	260	3770	220	3190	280	4060	240	3480	4000	16	4.23	500
<b>2SM 060</b>	6	0.37	260	3770	220	3190	280	4060	240	3480	4000	24	6.34	500
<b>2SM 080</b>	8.5	0.52	260	3770	220	3190	280	4060	240	3480	3500	29.7	7.85	500
<b>2SM 110</b>	11	0.67	260	3770	220	3190	280	4060	240	3480	3500	38.5	10.17	500
<b>2SM 140</b>	14	0.85	260	3770	220	3190	280	4060	240	3480	3500	49	12.95	500
<b>2SM 160</b>	16.5	1.01	240	3480	205	2972	250	3625	215	3117	3500	57.7	15.24	500
<b>2SM 190</b>	19.5	1.19	220	3190	190	2755	230	3335	200	2900	3300	64.3	16.99	500
<b>2SM 220</b>	22.5	1.37	200	2900	170	2465	210	3045	180	2610	2800	63	16.64	500
<b>2SM 260</b>	26	1.59	180	2610	155	2248	190	2755	165	2392	2500	65	17.17	500
<b>2SM 310</b>	31.5	1.92	140	2030	120	1740	150	2175	130	1885	2200	69	18.22	500

Nota - Per valori di pressione superiori a quelli indicati contattare il Servizio Commerciale.  
Note - for higher pressure values please contact our Sales Dpt.

**DIMENSIONI • DIMENSIONS**



**R** Solo per motori reversibili - Only for reversible motors

GRUPPO - GROUP 2	A		B		MASSA - MASS	
	mm	inch	mm	inch	kg	lbs
<b>2SM 040</b>	44.4	1.748	93.0	3.661	3.40	7.50
<b>2SM 060</b>	46.0	1.811	96.3	3.791	3.55	7.83
<b>2SM 080</b>	48.1	1.894	100.5	3.957	3.70	8.16
<b>2SM 110</b>	50.2	1.976	104.6	4.118	3.80	8.38
<b>2SM 140</b>	52.7	2.075	109.6	4.315	3.90	8.60
<b>2SM 160</b>	54.8	2.157	113.8	4.480	4.05	8.93
<b>2SM 190</b>	57.3	2.256	118.8	4.677	4.20	9.26
<b>2SM 220</b>	59.8	2.354	123.8	4.874	4.35	9.59
<b>2SM 260</b>	62.7	2.469	129.6	5.102	4.50	9.92
<b>2SM 310</b>	66.9	2.636	138.0	5.437	4.71	7.96

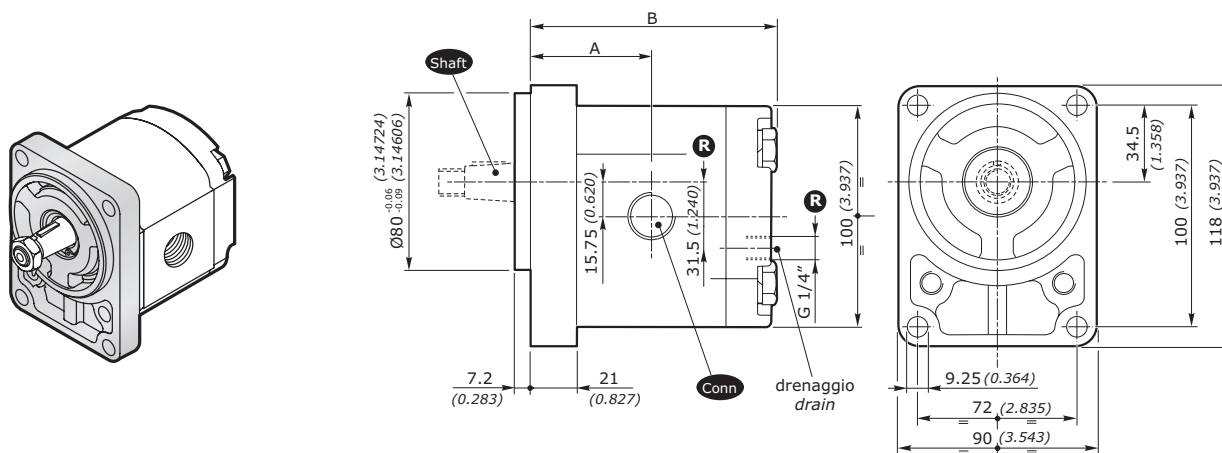
**MOTORI AD INGRANAGGI GRUPPO 2SM**  
**GEAR MOTORS GROUP 2SM**

**FLANGIA TEDESCA B80C GERMAN FLANGE**

GRUPPO GROUP 2SM	CILINDRATA DISPLACEMENT		PRESSIONE MAX - MAX PRESSURE								VELOCITÀ MAX MAXSPEED	PORTATA MAX MAX FLOW		VELOCITÀ MIN MIN SPEED	
	cm³/giro	in³/rev	S - D		R		S - D		R			l/min	Gal/min		giri/min - rpm
			P1 bar	P1 psi	P1 bar	P1 psi	P2 bar	P2 psi	P2 bar	P2 psi					
<b>2SM 040</b>	4	0.24	250	3625	210	3045	270	3915	230	3335	4000	16	4.23	500	
<b>2SM 060</b>	6	0.37	250	3625	210	3045	270	3915	230	3335	4000	24	6.34	500	
<b>2SM 080</b>	8.5	0.52	250	3625	210	3045	270	3915	230	3335	3500	29.7	7.85	500	
<b>2SM 110</b>	11	0.67	250	3625	210	3045	270	3915	230	3335	3500	38.5	10.17	500	
<b>2SM 140</b>	14	0.85	250	3625	210	3045	270	3915	230	3335	3500	49	12.95	500	
<b>2SM 160</b>	16.5	1.01	230	3335	195	2827	240	3480	205	2972	3500	57.7	15.24	500	
<b>2SM 190</b>	19.5	1.19	210	3045	180	2610	220	3190	190	2755	3300	64.3	16.99	500	
<b>2SM 220</b>	22.5	1.37	190	2755	160	2320	200	2900	170	2465	2800	63	16.64	500	
<b>2SM 260</b>	26	1.59	170	2465	145	2102	180	2610	155	2248	2500	65	17.17	500	
<b>2SM 310</b>	31.5	1.92	130	1885	110	1595	140	2030	120	1740	2200	69	18.22	500	

Nota - Per valori di pressione superiori a quelli indicati contattare il Servizio Commerciale.  
Note - for higher pressure values please contact our Sales Dpt.

**DIMENSIONI • DIMENSIONS**



**R** Solo per motori reversibili - Only for reversible motors

GRUPPO - GROUP 2	A		B		MASSA - MASS	
	mm	inch	mm	inch	kg	lbs
<b>2SM 040</b>	46.4	1.827	95.0	3.740	2.30	5.07
<b>2SM 060</b>	48.0	1.890	98.3	3.870	2.45	5.40
<b>2SM 080</b>	50.1	1.972	102.5	4.035	2.60	5.73
<b>2SM 110</b>	52.2	2.055	106.6	4.197	2.70	5.95
<b>2SM 140</b>	54.7	2.154	111.6	4.394	2.80	6.17
<b>2SM 160</b>	56.8	2.236	115.8	4.559	2.95	6.51
<b>2SM 190</b>	59.3	2.335	120.8	4.756	3.10	6.84
<b>2SM 220</b>	61.8	2.433	125.8	4.953	3.25	7.17
<b>2SM 260</b>	64.7	2.547	131.6	5.181	3.40	7.50
<b>2SM 310</b>	68.9	2.715	140.0	5.516	3.61	7.96

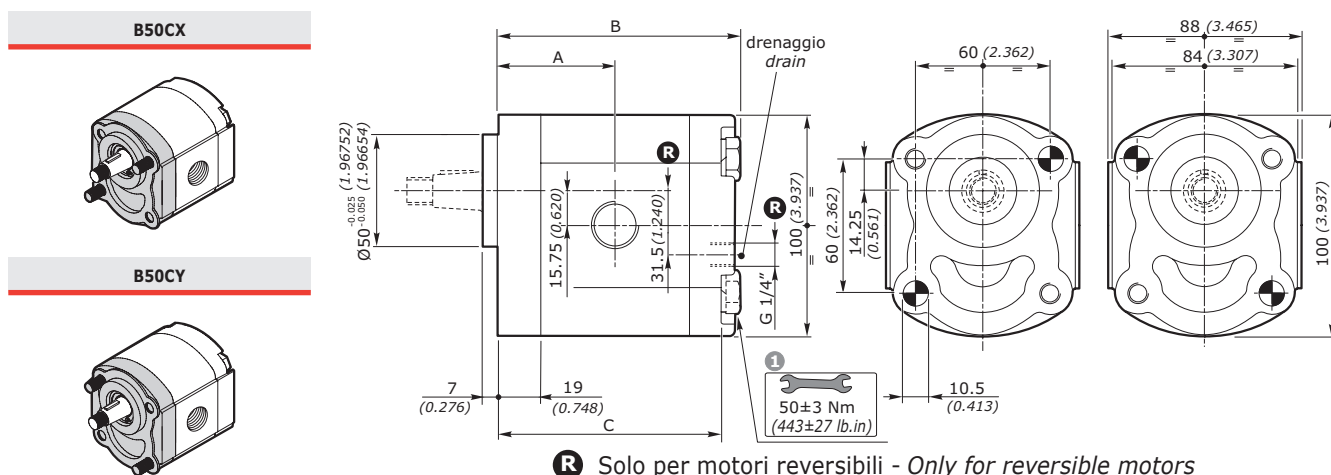
**MOTORI AD INGRANAGGI GRUPPO 2SM**  
**GEAR MOTORS GROUP 2SM**

**FLANGIA B50C FLANGE**

GRUPPO GROUP 2SM	CILINDRATA DISPLACEMENT		PRESSIONE MAX - MAX PRESSURE								VELOCITÀ MAX MAXSPEED	PORTATA MAX MAX FLOW		VELOCITÀ MIN MIN SPEED
			S - D		R		S - D		R					
	cm³/giro	in³/rev	P1 bar	P1 psi	P1 bar	P1 psi	P2 bar	P2 psi	P2 bar	P2 psi	giri/min - rpm	l/min	Gal/min	giri/min - rpm
<b>2SM 040</b>	4	0.24	250	3625	210	3045	270	3915	230	3335	4000	16	4.23	500
<b>2SM 060</b>	6	0.37	250	3625	210	3045	270	3915	230	3335	4000	24	6.34	500
<b>2SM 080</b>	8.5	0.52	250	3625	210	3045	270	3915	230	3335	3500	29.7	7.85	500
<b>2SM 110</b>	11	0.67	250	3625	210	3045	270	3915	230	3335	3500	38.5	10.17	500
<b>2SM 140</b>	14	0.85	250	3625	210	3045	270	3915	230	3335	3500	49	12.95	500
<b>2SM 160</b>	16.5	1.01	230	3335	195	2827	240	3480	205	2972	3500	57.7	15.24	500
<b>2SM 190</b>	19.5	1.19	210	3045	180	2610	220	3190	190	2755	3300	64.3	16.99	500
<b>2SM 220</b>	22.5	1.37	190	2755	160	2320	200	2900	170	2465	2800	63	16.64	500
<b>2SM 260</b>	26	1.59	170	2465	145	2102	180	2610	155	2248	2500	65	17.17	500
<b>2SM 310</b>	31.5	1.92	130	1885	110	1595	140	2030	120	1740	2200	69	18.22	500

Nota - Per valori di pressione superiori a quelli indicati contattare il Servizio Commerciale.  
 Note - for higher pressure values please contact our Sales Dpt.

**DIMENSIONI • DIMENSIONS**



**R** Solo per motori reversibili - Only for reversible motors

**1**  
Coppia di serraggio viti:  $50 \pm 3 \text{ Nm}$  (viti classe 10.9-12.9 UNI EN 20898/1)  
Il kit viti per il fissaggio della pompa è da ordinare separatamente.  
Codice di ordinazione: **0029W** (+ lunghezza L - vedi tabella)  
Il fissaggio del motore può essere effettuato con 2 viti prigioniere classe 10.9-12.9 UNI EN 20898/1 preserrate:  $40 \pm 3 \text{ Nm}$ . Fissare il motore mediante dadi autobloccanti con coppia di serraggio:  $50 \pm 3 \text{ Nm}$

**1**  
Screw tightening torque:  $443 \pm 27 \text{ lb-in}$  (screws 10.9-12.9 UNI EN 20898/1).  
The screw kit for the pump assembly should be ordered separately.  
Ordering code: **0029W** (+ length L - see table)  
The motor assembling should be made with 2 stud type 10.9-12.9 UNI EN 20898/1 pre-tighten  $354 \pm 27 \text{ lb-in}$  screws. Fix the motor by self-locking nuts with tightening torque:  $443 \pm 27 \text{ lb-in}$

GRUPPO - GROUP 2	A		B		C		L <sup>1</sup>		MASSA - MASS	
	mm	inch	mm	inch	mm	inch	mm	inch	kg	lbs
<b>2SM 040</b>	44.4	1.748	93.0	3.661	84.0	3.307	105	4.134	2.30	5.07
<b>2SM 060</b>	46.0	1.811	96.3	3.791	87.3	3.437	105	4.134	2.45	5.40
<b>2SM 080</b>	48.1	1.894	100.5	3.957	91.5	3.602	110	4.331	2.60	5.73
<b>2SM 110</b>	50.2	1.976	104.6	4.118	95.6	3.764	115	4.528	2.70	5.95
<b>2SM 140</b>	52.7	2.075	109.6	4.315	100.6	3.961	120	4.724	2.80	6.17
<b>2SM 160</b>	54.8	2.157	113.8	4.480	104.8	4.126	125	4.921	2.95	6.51
<b>2SM 190</b>	57.3	2.256	118.8	4.677	109.8	4.323	130	5.118	3.10	6.84
<b>2SM 220</b>	59.8	2.354	123.8	4.874	114.8	4.520	135	5.315	3.25	7.17
<b>2SM 260</b>	62.7	2.469	129.6	5.102	120.6	4.748	140	5.512	3.40	7.50
<b>2SM 310</b>	66.9	2.636	138.0	5.437	129.0	5.083	150	5.910	3.61	7.96

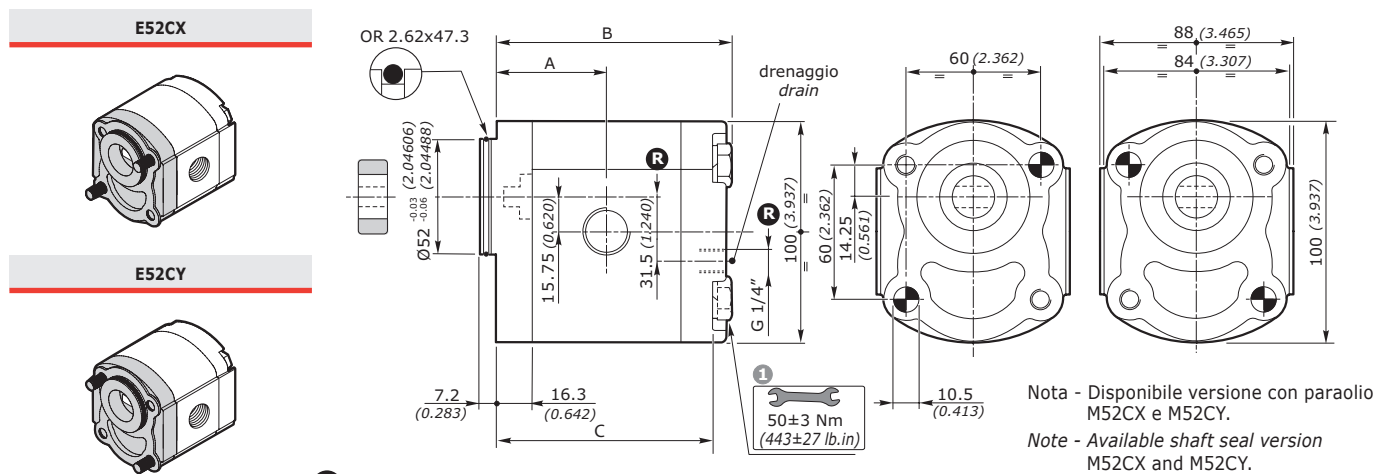
**MOTORI AD INGRANAGGI GRUPPO 2SM**  
**GEAR MOTORS GROUP 2SM**

**FLANGIA E52C FLANGE**

GRUPPO GROUP 2SM	CILINDRATA DISPLACEMENT		PRESSIONE MAX - MAX PRESSURE								VELOCITÀ MAX MAXSPEED		PORTATA MAX MAX FLOW		VELOCITÀ MIN MIN SPEED	
			S - D		R		S - D		R							
	cm³/giro	in³/rev	P1 bar	P1 psi	P1 bar	P1 psi	P2 bar	P2 psi	P2 bar	P2 psi	giri/min - rpm	l/min	Gal/min	giri/min - rpm		
<b>2SM 040</b>	4	0.24	250	3625	210	3045	270	3915	230	3335	4000	16	4.23	500		
<b>2SM 060</b>	6	0.37	250	3625	210	3045	270	3915	230	3335	4000	24	6.34	500		
<b>2SM 080</b>	8.5	0.52	250	3625	210	3045	270	3915	230	3335	3500	29.7	7.85	500		
<b>2SM 110</b>	11	0.67	250	3625	210	3045	270	3915	230	3335	3500	38.5	10.17	500		
<b>2SM 140</b>	14	0.85	250	3625	210	3045	270	3915	230	3335	3500	49	12.95	500		
<b>2SM 160</b>	16.5	1.01	230	3335	195	2827	240	3480	205	2972	3500	57.7	15.24	500		
<b>2SM 190</b>	19.5	1.19	210	3045	180	2610	220	3190	190	2755	3300	64.3	16.99	500		
<b>2SM 220</b>	22.5	1.37	190	2755	160	2320	200	2900	170	2465	2800	63	16.64	500		
<b>2SM 260</b>	26	1.59	170	2465	145	2102	180	2610	155	2248	2500	65	17.17	500		
<b>2SM 310</b>	31.5	1.92	130	1885	110	1595	140	2030	120	1740	2200	69	18.22	500		

Nota - Per valori di pressione superiori a quelli indicati contattare il Servizio Commerciale.  
Note - for higher pressure values please contact our Sales Dept.

**DIMENSIONI • DIMENSIONS**



**R** Solo per motori reversibili - Only for reversible motors

**1**  
Coppia di serraggio viti: 50 ± 3Nm (viti classe 10.9-12.9 UNI EN 20898/1)  
Il kit viti per il fissaggio del motore è da ordinare separatamente.  
**Codice di ordinazione: 0029W (+ lunghezza L - vedi tabella)**  
Il fissaggio del motore può essere effettuato con 2 viti prigioniere classe 10.9-12.9 UNI EN 20898/1 preserrate: 40 ± 3Nm. Fissare il motore mediante dadi autobloccanti con coppia di serraggio: 50 ± 3Nm

**1**  
Screw tightening torque: 443 ± 27 lb-in (screws 10.9-12.9 UNI EN 20898/1).  
The screw kit for the pump assembly should be ordered separately.  
Ordering code: **0029W** (+ length L - see table)  
The motor assembling should be made with 2 stud type 10.9-12.9 UNI EN 20898/1 pre-tighten 354 ± 27 lb-in screws. Fix the motor by self-locking nuts with tightening torque: 443 ± 27 lb-in

GRUPPO - GROUP 2	A		B		C		L <sup>1</sup>		MASSA - MASS	
	mm	inch	mm	inch	mm	inch	mm	inch	kg	lbs
<b>2SP 040</b>	41.7	1.642	90.3	3.555	81.3	3.201	100	3.937	2.30	5.07
<b>2SP 060</b>	43.3	1.705	93.6	3.685	84.6	3.331	105	4.134	2.45	5.40
<b>2SP 080</b>	45.4	1.787	97.8	3.850	88.8	3.496	110	4.331	2.60	5.73
<b>2SP 110</b>	47.5	1.870	101.9	4.012	92.9	3.657	115	4.528	2.70	5.95
<b>2SP 140</b>	50.0	1.969	106.9	4.209	97.9	3.854	120	4.724	2.80	6.17
<b>2SP 160</b>	52.1	2.051	111.1	4.374	102.1	4.020	120	4.724	2.95	6.51
<b>2SP 190</b>	54.6	2.150	116.1	4.571	107.1	4.217	125	4.921	3.10	6.84
<b>2SP 220</b>	57.1	2.248	121.1	4.768	112.1	4.413	130	5.118	3.25	7.17
<b>2SP 260</b>	60.0	2.362	126.9	4.996	117.9	4.642	140	5.512	3.40	7.50
<b>2SP 310</b>	64.2	2.529	135.3	5.331	126.3	4.988	145	5.713	3.61	7.96

**MOTORI AD INGRANAGGI GRUPPO 2SM**  
**GEAR MOTORS GROUP 2SM**

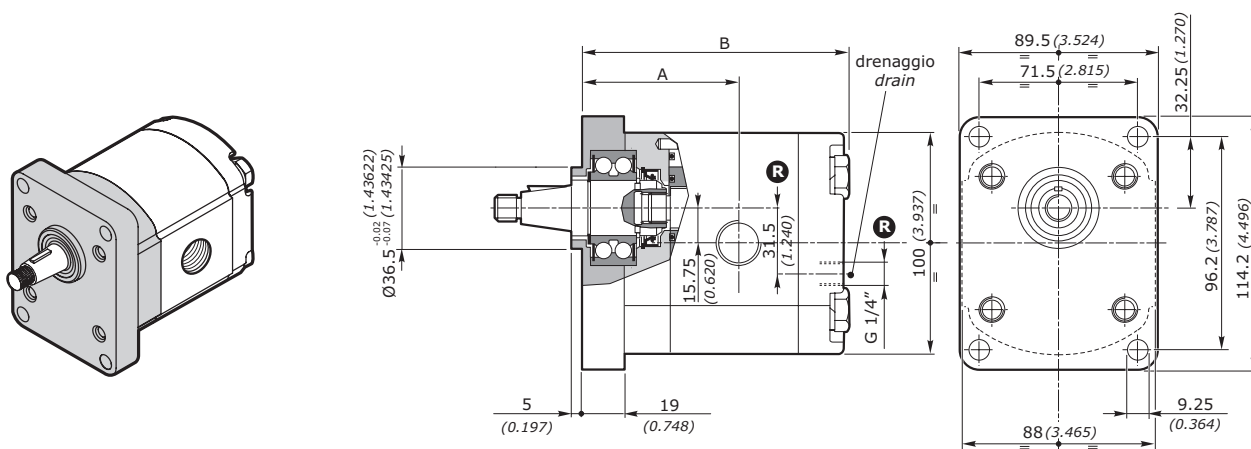
VERSIONE DA UTILIZZARE IN PRESENZA DI CARICHI ASSIALI E/O RADIALI  
 VERSION TO BE USED WITH AXIAL AND/OR RADIAL LOADS

**FLANGIA SUPEUR FLANGE**

GRUPPO GROUP 2SM	CILINDRATA DISPLACEMENT		PRESSIONE MAX - MAX PRESSURE								VELOCITÀ MAX MAXSPEED	PORTATA MAX MAX FLOW		VELOCITÀ MIN MIN SPEED
			S - D		R		S - D		R					
	cm³/giro	in³/rev	P1 bar	P1 psi	P1 bar	P1 psi	P2 bar	P2 psi	P2 bar	P2 psi	giri/min - rpm	l/min	Gal/min	giri/min - rpm
<b>2SM 040</b>	4	0.24	250	3625	210	3045	270	3915	230	3335	4000	16	4.23	500
<b>2SM 060</b>	6	0.37	250	3625	210	3045	270	3915	230	3335	4000	24	6.34	500
<b>2SM 080</b>	8.5	0.52	250	3625	210	3045	270	3915	230	3335	3500	29.7	7.85	500
<b>2SM 110</b>	11	0.67	250	3625	210	3045	270	3915	230	3335	3500	38.5	10.17	500
<b>2SM 140</b>	14	0.85	250	3625	210	3045	270	3915	230	3335	3500	49	12.95	500
<b>2SM 160</b>	16.5	1.01	230	3335	195	2827	240	3480	205	2972	3500	57.7	15.24	500
<b>2SM 190</b>	19.5	1.19	210	3045	180	2610	220	3190	190	2755	3300	64.3	16.99	500
<b>2SM 220</b>	22.5	1.37	190	2755	160	2320	200	2900	170	2465	2800	63	16.64	500
<b>2SM 260</b>	26	1.59	170	2465	145	2102	180	2610	155	2248	2500	65	17.17	500
<b>2SM 310</b>	31.5	1.92	130	1885	110	1595	140	2030	120	1740	2200	69	18.22	500

Nota - Per valori di pressione superiori a quelli indicati contattare il Servizio Commerciale.  
 Note - for higher pressure values please contact our Sales Dpt.

**DIMENSIONI • DIMENSIONS**



**R** Solo per motori reversibili - Only for reversible motors

La flangia SUPEUR è sempre allestita con anello di rinforzo. *SUPEUR flange is always equipped with sealing ring*

GRUPPO - GROUP 2	A		B		MASSA - MASS	
	mm	inch	mm	inch	kg	lbs
<b>2SP 040</b>	64.4	2.535	113.0	4.449	2.80	6.17
<b>2SP 060</b>	66.0	2.598	116.3	4.579	2.95	6.50
<b>2SP 080</b>	68.1	2.681	120.5	4.744	3.10	6.84
<b>2SP 110</b>	70.2	2.764	124.6	4.906	3.20	7.06
<b>2SP 140</b>	72.7	2.863	129.6	5.102	3.30	7.28
<b>2SP 160</b>	74.8	2.945	133.8	5.268	3.45	7.61
<b>2SP 190</b>	77.3	3.043	138.8	5.465	3.60	7.94
<b>2SP 220</b>	79.8	3.142	143.8	5.661	3.75	8.27
<b>2SP 260</b>	82.7	3.256	149.6	5.890	3.90	8.60
<b>2SP 310</b>	86.9	3.424	158.0	6.225	4.11	9.06



MOTORI AD INGRANAGGI **GRUPPO 2SM**  
**GEAR MOTORS GROUP 2SM**

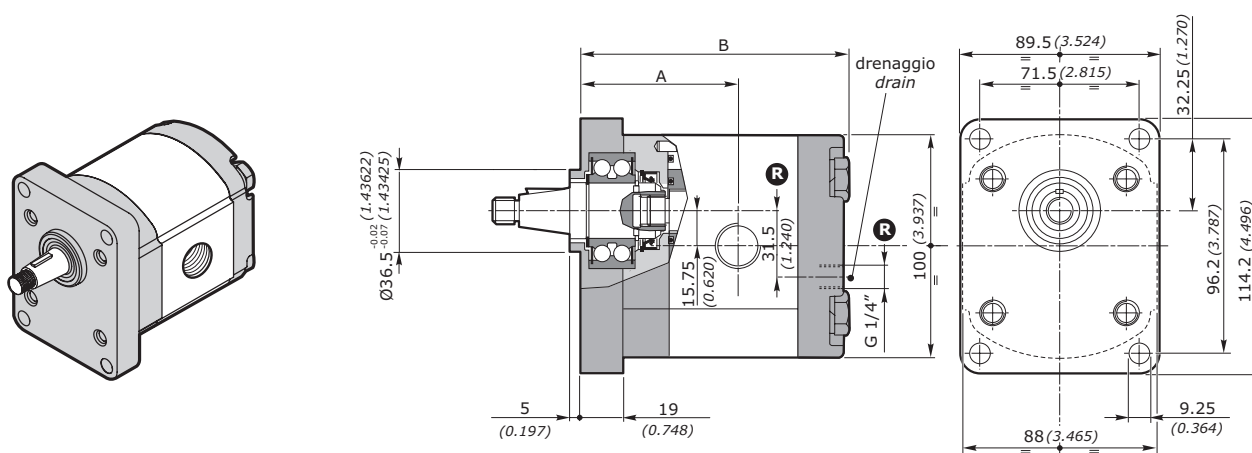
FLANGIA **SUPEUR** FLANGE

FLANGIA E COPERCHIO IN GHISA - FLANGE AND COVER IN CAST IRON

GRUPPO GROUP 2SM	CILINDRATA DISPLACEMENT		PRESSIONE MAX - MAX PRESSURE								VELOCITÀ MAX MAXSPEED	PORTATA MAX MAX FLOW		VELOCITÀ MIN MIN SPEED
			S - D		R		S - D		R					
	cm³/giro	in³/rev	P1 bar	P1 psi	P1 bar	P1 psi	P2 bar	P2 psi	P2 bar	P2 psi	giri/min - rpm	l/min	Gal/min	giri/min - rpm
<b>2SM 040</b>	4	0.24	260	3770	220	3190	280	4060	240	3480	4000	16	4.23	500
<b>2SM 060</b>	6	0.37	260	3770	220	3190	280	4060	240	3480	4000	24	6.34	500
<b>2SM 080</b>	8.5	0.52	260	3770	220	3190	280	4060	240	3480	3500	29.7	7.85	500
<b>2SM 110</b>	11	0.67	260	3770	220	3190	280	4060	240	3480	3500	38.5	10.17	500
<b>2SM 140</b>	14	0.85	260	3770	220	3190	280	4060	240	3480	3500	49	12.95	500
<b>2SM 160</b>	16.5	1.01	240	3480	205	2972	250	3625	215	3117	3500	57.7	15.24	500
<b>2SM 190</b>	19.5	1.19	220	3190	190	2755	230	3335	200	2900	3300	64.3	16.99	500
<b>2SM 220</b>	22.5	1.37	200	2900	170	2465	210	3045	180	2610	2800	63	16.64	500
<b>2SM 260</b>	26	1.59	180	2610	155	2248	190	2755	165	2392	2500	65	17.17	500
<b>2SM 310</b>	31.5	1.92	140	2030	120	1740	150	2175	130	1885	2200	69	18.22	500

Nota - Per valori di pressione superiori a quelli indicati contattare il Servizio Commerciale.  
 Note - for higher pressure values please contact our Sales Dpt.

DIMENSIONI • DIMENSIONS



**R** Solo per motori reversibili - Only for reversible motors

La flangia SUPEUR è sempre allestita con anello di rinforzo. *SUPEUR flange is always equipped with sealing ring*

GRUPPO - GROUP 2	A		B		MASSA - MASS	
	mm	inch	mm	inch	kg	lbs
<b>2SM 040</b>	64.4	2.535	113.0	4.449	3.467	7.643
<b>2SM 060</b>	66.0	2.598	116.3	4.579	3.617	7.974
<b>2SM 080</b>	68.1	2.681	120.5	4.744	3.767	8.304
<b>2SM 110</b>	70.2	2.764	124.6	4.906	3.867	8.525
<b>2SM 140</b>	72.7	2.863	129.6	5.102	3.967	8.745
<b>2SM 160</b>	74.8	2.945	133.8	5.268	4.117	9.076
<b>2SM 190</b>	77.3	3.043	138.8	5.465	4.267	9.407
<b>2SM 220</b>	79.8	3.142	143.8	5.661	4.417	9.737
<b>2SM 260</b>	82.7	3.256	149.6	5.890	4.567	10.068
<b>2SM 310</b>	86.9	3.424	158.0	6.225	4.777	10.531

**MOTORI AD INGRANAGGI GRUPPO 2SM**  
**GEAR MOTORS GROUP 2SM**

**FLANGIA SAE SAEB\* (1) SAEB FLANGE**

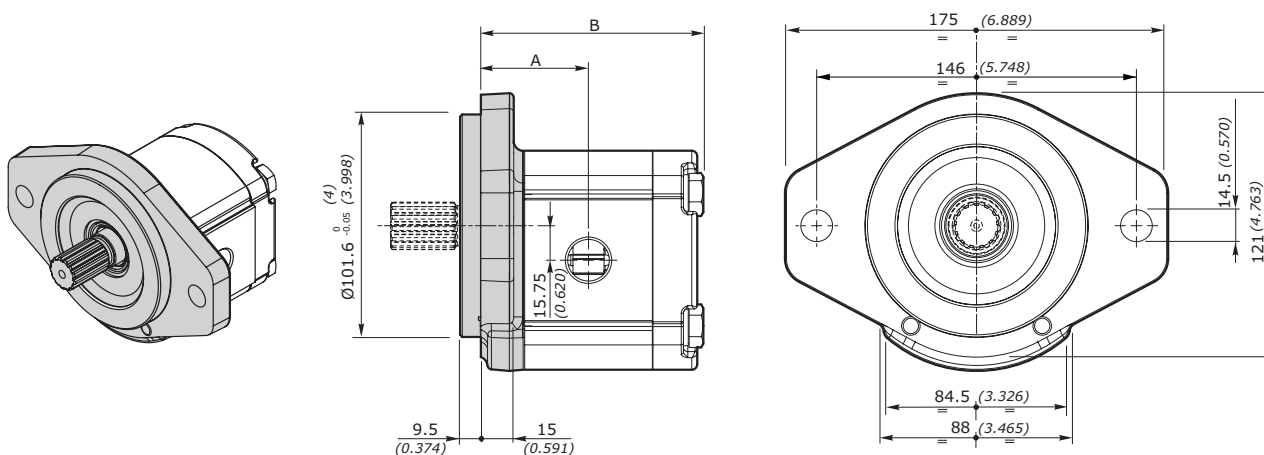
**FLANGIA E COPERCHIO IN GHISA - FLANGE AND COVER IN CAST IRON**

GRUPPO GROUP 2SM	CILINDRATA DISPLACEMENT		PRESSIONE MAX - MAX PRESSURE								VELOCITÀ MAX MAXSPEED	PORTATA MAX MAX FLOW		VELOCITÀ MIN MIN SPEED
			S - D		R		S - D		R					
	cm³/giro	in³/rev	P1 bar	P1 psi	P1 bar	P1 psi	P2 bar	P2 psi	P2 bar	P2 psi	giri/min - rpm	l/min	Gal/min	giri/min - rpm
<b>2SM 040</b>	4	0.24	260	3770	220	3190	280	4060	240	3480	4000	16	4.23	500
<b>2SM 060</b>	6	0.37	260	3770	220	3190	280	4060	240	3480	4000	24	6.34	500
<b>2SM 080</b>	8.5	0.52	260	3770	220	3190	280	4060	240	3480	3500	29.7	7.85	500
<b>2SM 110</b>	11	0.67	260	3770	220	3190	280	4060	240	3480	3500	38.5	10.17	500
<b>2SM 140</b>	14	0.85	260	3770	220	3190	280	4060	240	3480	3500	49	12.95	500
<b>2SM 160</b>	16.5	1.01	240	3480	205	2972	250	3625	215	3117	3500	57.7	15.24	500
<b>2SM 190</b>	19.5	1.19	220	3190	190	2755	230	3335	200	2900	3300	64.3	16.99	500
<b>2SM 220</b>	22.5	1.37	200	2900	170	2465	210	3045	180	2610	2800	63	16.64	500
<b>2SM 260</b>	26	1.59	180	2610	155	2248	190	2755	165	2392	2500	65	17.17	500
<b>2SM 310</b>	31.5	1.92	140	2030	120	1740	150	2175	130	1885	2200	69	18.22	500

Nota - Per valori di pressione superiori a quelli indicati contattare il Servizio Commerciale.  
 Note - for higher pressure values please contact our Sales Dpt.

\* Contattare il servizio commerciale. / Available soon. Please contact our Sales Dpt.

**DIMENSIONI • DIMENSIONS**



(1) Configurabile come motore unidirezionale; elementi interni non intercambiabili  
 Configuration as unidirectional gear motor; internal elements are not interchangeable

GRUPPO - GROUP 2	A		B		MASSA - MASS	
	mm	inch	mm	inch	kg	lbs
<b>2SM 040</b>	45.4	1.787	94	3.701	4.90	10.80
<b>2SM 060</b>	47.0	1.850	97.3	3.831	5.05	11.13
<b>2SM 080</b>	49.1	1.933	101.5	3.996	5.20	11.46
<b>2SM 110</b>	51.2	2.016	105.6	4.157	5.30	11.68
<b>2SM 140</b>	53.7	2.114	110.6	4.354	5.40	11.90
<b>2SM 160</b>	55.8	2.197	114.8	4.520	5.55	12.24
<b>2SM 190</b>	58.3	2.295	119.8	4.717	5.70	12.57
<b>2SM 220</b>	60.8	2.394	124.8	4.913	5.85	12.90
<b>2SM 260</b>	63.7	2.508	130.6	5.142	6.00	13.23
<b>2SM 310</b>	67.9	2.673	139	5.472	6.20	13.67

**MOTORI AD INGRANAGGI GRUPPO 2SM**  
**GEAR MOTORS GROUP 2SM**

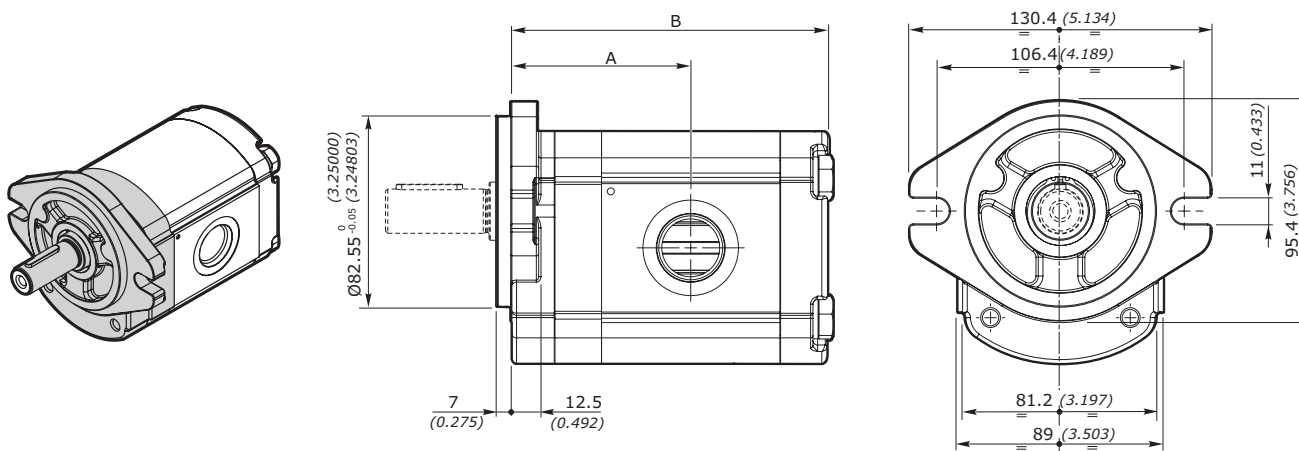
**FLANGIA SUPSAE FLANGE**

**FLANGIA E COPERCHIO IN ALLUMINIO - FLANGE AND COVER IN ALUMINIUM**

GRUPPO GROUP 2SM	CILINDRATA DISPLACEMENT		PRESSIONE MAX - MAX PRESSURE								VELOCITÀ MAX MAXSPEED	PORTATA MAX MAX FLOW		VELOCITÀ MIN MIN SPEED
			S - D		R		S - D		R					
	cm³/giro	in³/rev	P1 bar	P1 psi	P1 bar	P1 psi	P2 bar	P2 psi	P2 bar	P2 psi	giri/min - rpm	l/min	Gal/min	giri/min - rpm
<b>2SM 040</b>	4	0.24	250	3625	210	3045	270	3915	230	3335	4000	16	4.23	500
<b>2SM 060</b>	6	0.37	250	3625	210	3045	270	3915	230	3335	4000	24	6.34	500
<b>2SM 080</b>	8.5	0.52	250	3625	210	3045	270	3915	230	3335	3500	29.7	7.85	500
<b>2SM 110</b>	11	0.67	250	3625	210	3045	270	3915	230	3335	3500	38.5	10.17	500
<b>2SM 140</b>	14	0.85	250	3625	210	3045	270	3915	230	3335	3500	49	12.95	500
<b>2SM 160</b>	16.5	1.01	230	3335	195	2827	240	3480	205	2972	3500	57.7	15.24	500
<b>2SM 190</b>	19.5	1.19	210	3045	180	2610	220	3190	190	2755	3300	64.3	16.99	500
<b>2SM 220</b>	22.5	1.37	190	2755	160	2320	200	2900	170	2465	2800	63	16.64	500
<b>2SM 260</b>	26	1.59	170	2465	145	2102	180	2610	155	2248	2500	65	17.17	500
<b>2SM 310</b>	31.5	1.92	130	1885	110	1595	140	2030	120	1740	2200	69	18.22	500

Nota - Per valori di pressione superiori a quelli indicati contattare il Servizio Commerciale.  
Note - for higher pressure values please contact our Sales Dpt.

**DIMENSIONI • DIMENSIONS**



GRUPPO - GROUP 2	A		B		MASSA - MASS	
	mm	inch	mm	inch	kg	lbs
<b>2SM 040</b>	64.4	2.535	113.0	4.448	2.80	6.172
<b>2SM 060</b>	66.0	2.598	116.3	4.578	2.95	6.503
<b>2SM 080</b>	68.1	2.681	120.5	4.744	3.10	6.834
<b>2SM 110</b>	70.2	2.763	124.6	4.905	3.20	7.054
<b>2SM 140</b>	72.7	2.862	129.6	5.102	3.30	7.275
<b>2SM 160</b>	74.8	2.944	133.8	5.267	3.45	7.605
<b>2SM 190</b>	77.3	3.043	138.8	5.464	3.60	7.936
<b>2SM 220</b>	79.8	3.141	143.8	5.661	3.75	8.267
<b>2SM 260</b>	82.7	3.255	149.6	5.889	3.90	8.598
<b>2SM 310</b>	86.9	3.421	138.0	6.220	4.10	9.038

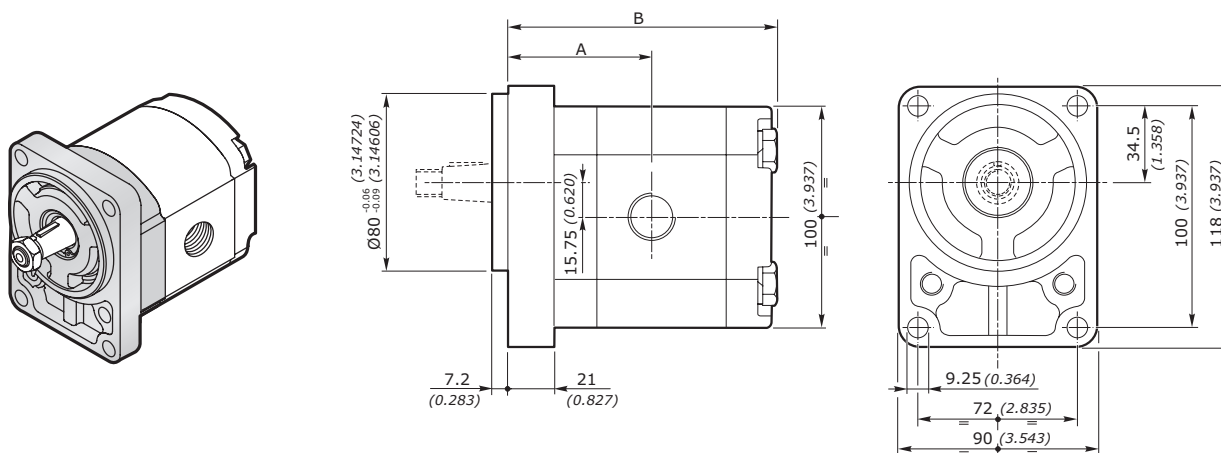
**MOTORI AD INGRANAGGI GRUPPO 2SM**  
**GEAR MOTORS GROUP 2SM**

**FLANGIA SUPB80C FLANGE**

GRUPPO GROUP 2SM	CILINDRATA DISPLACEMENT		PRESSIONE MAX - MAX PRESSURE								VELOCITÀ MAX MAXSPEED	PORTATA MAX MAX FLOW		VELOCITÀ MIN MIN SPEED
			S - D		R		S - D		R					
	cm³/giro	in³/rev	P1 bar	P1 psi	P1 bar	P1 psi	P2 bar	P2 psi	P2 bar	P2 psi	giri/min - rpm	l/min	Gal/min	giri/min - rpm
<b>2SM 040</b>	4	0.24	250	3625	210	3045	270	3915	230	3335	4000	16	4.23	500
<b>2SM 060</b>	6	0.37	250	3625	210	3045	270	3915	230	3335	4000	24	6.34	500
<b>2SM 080</b>	8.5	0.52	250	3625	210	3045	270	3915	230	3335	3500	29.7	7.85	500
<b>2SM 110</b>	11	0.67	250	3625	210	3045	270	3915	230	3335	3500	38.5	10.17	500
<b>2SM 140</b>	14	0.85	250	3625	210	3045	270	3915	230	3335	3500	49	12.95	500
<b>2SM 160</b>	16.5	1.01	230	3335	195	2827	240	3480	205	2972	3500	57.7	15.24	500
<b>2SM 190</b>	19.5	1.19	210	3045	180	2610	220	3190	190	2755	3300	64.3	16.99	500
<b>2SM 220</b>	22.5	1.37	190	2755	160	2320	200	2900	170	2465	2800	63	16.64	500
<b>2SM 260</b>	26	1.59	170	2465	145	2102	180	2610	155	2248	2500	65	17.17	500
<b>2SM 310</b>	31.5	1.92	130	1885	110	1595	140	2030	120	1740	2200	69	18.22	500

Nota - Per valori di pressione superiori a quelli indicati contattare il Servizio Commerciale.  
 Note - for higher pressure values please contact our Sales Dept.

**DIMENSIONI • DIMENSIONS**



GRUPPO - GROUP 2	A		B		MASSA - MASS	
	mm	inch	mm	inch	kg	lbs
<b>2SM 040</b>	66.4	2.614	115.0	4.527	2.763	6.09
<b>2SM 060</b>	68	2.677	118.3	4.657	2.913	6.42
<b>2SM 080</b>	70.1	2.760	122.5	4.823	3.063	6.75
<b>2SM 110</b>	72.2	2.842	126.6	4.984	3.163	6.97
<b>2SM 140</b>	74.7	2.941	131.6	5.181	3.263	7.20
<b>2SM 160</b>	76.8	3.023	135.8	5.346	3.413	7.52
<b>2SM 190</b>	79.3	3.122	140.8	5.543	3.563	7.85
<b>2SM 220</b>	81.8	3.220	145.8	5.740	3.713	8.18
<b>2SM 260</b>	84.7	3.334	151.6	5.968	3.863	8.52
<b>2SM 310</b>	88.9	3.500	160.0	6.299	4.073	8.98

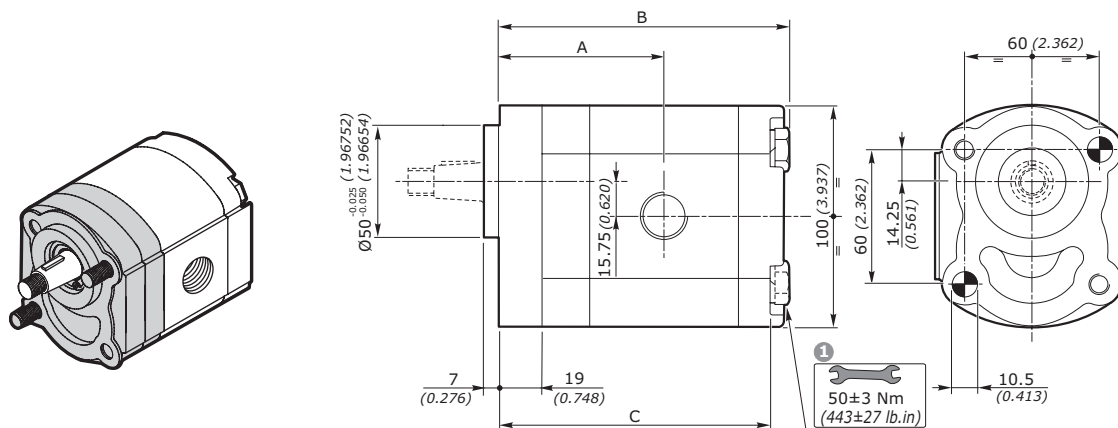
**MOTORI AD INGRANAGGI GRUPPO 2SM**  
**GEAR MOTORS GROUP 2SM**

**FLANGIA SUPB50CX FLANGE**

GRUPPO GROUP 2SM	CILINDRATA DISPLACEMENT		PRESSIONE MAX - MAX PRESSURE								VELOCITÀ MAX MAXSPEED	PORTATA MAX MAX FLOW		VELOCITÀ MIN MIN SPEED
			S - D		R		S - D		R					
	cm³/giro	in³/rev	P1 bar	P1 psi	P1 bar	P1 psi	P2 bar	P2 psi	P2 bar	P2 psi	giri/min - rpm	l/min	Gal/min	giri/min - rpm
<b>2SM 040</b>	4	0.24	250	3625	210	3045	270	3915	230	3335	4000	16	4.23	500
<b>2SM 060</b>	6	0.37	250	3625	210	3045	270	3915	230	3335	4000	24	6.34	500
<b>2SM 080</b>	8.5	0.52	250	3625	210	3045	270	3915	230	3335	3500	29.7	7.85	500
<b>2SM 110</b>	11	0.67	250	3625	210	3045	270	3915	230	3335	3500	38.5	10.17	500
<b>2SM 140</b>	14	0.85	250	3625	210	3045	270	3915	230	3335	3500	49	12.95	500
<b>2SM 160</b>	16.5	1.01	230	3335	195	2827	240	3480	205	2972	3500	57.7	15.24	500
<b>2SM 190</b>	19.5	1.19	210	3045	180	2610	220	3190	190	2755	3300	64.3	16.99	500
<b>2SM 220</b>	22.5	1.37	190	2755	160	2320	200	2900	170	2465	2800	63	16.64	500
<b>2SM 260</b>	26	1.59	170	2465	145	2102	180	2610	155	2248	2500	65	17.17	500
<b>2SM 310</b>	31.5	1.92	130	1885	110	1595	140	2030	120	1740	2200	69	18.22	500

Nota - Per valori di pressione superiori a quelli indicati contattare il Servizio Commerciale.  
Note - for higher pressure values please contact our Sales Dpt.

**DIMENSIONI • DIMENSIONS**



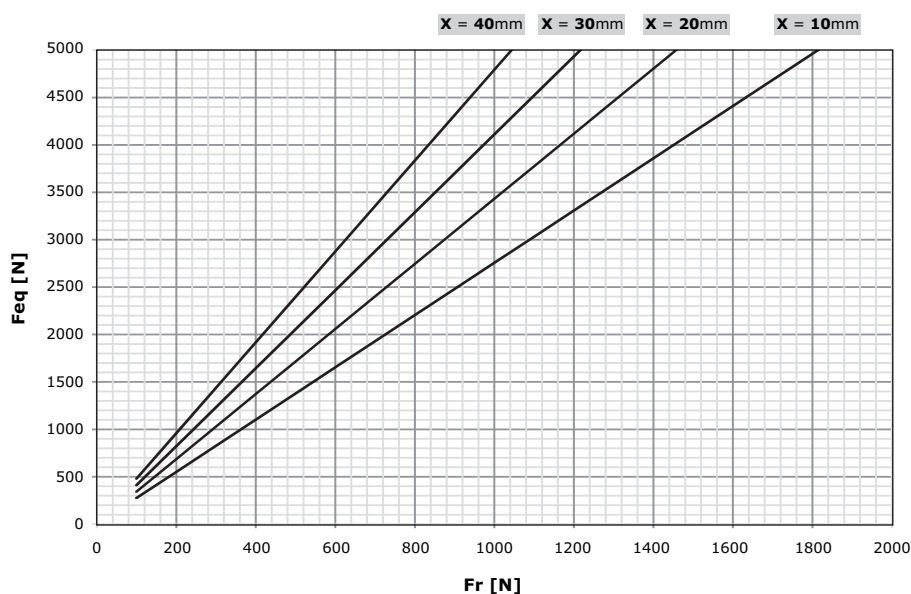
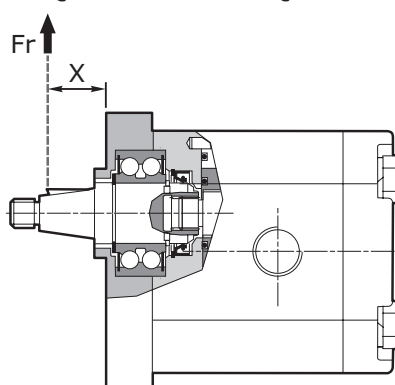
**1**  
Coppia di serraggio viti:  $50 \pm 3 \text{ Nm}$  (viti classe 10.9-12.9 UNI EN 20898/1)  
Il kit viti per il fissaggio della pompa è da ordinare separatamente.  
Codice di ordinazione: **0029W** (+ lunghezza **L** - vedi tabella)  
Il fissaggio della pompa può essere effettuato con 2 viti prigioniere classe 10.9-12.9 UNI EN 20898/1 preserrate:  $40 \pm 3 \text{ Nm}$ . Fissare la pompa mediante dadi autobloccanti con coppia di serraggio:  $50 \pm 3 \text{ Nm}$

**1**  
Screw tightening torque:  $443 \pm 27 \text{ lb-in}$  (screws 10.9-12.9 UNI EN 20898/1).  
The screw kit for the pump assembly should be ordered separately.  
Ordering code: **0029W** (+ length **L** - see table)  
The pump assembling should be made with 2 screws stud type 10.9-12.9 UNI EN 20898/1 pre-tighten  $354 \pm 27 \text{ lb-in}$ . Fix the pump by self-locking nuts with tightening torque:  $443 \pm 27 \text{ lb-in}$

GRUPPO - GROUP 2	A		B		C		L <b>1</b>		MASSA - MASS	
	mm	inch	mm	inch	mm	inch	mm	inch	kg	lbs
<b>2SM 040</b>	64.4	2.535	113.0	4.448	104.0	4.094	125	4.921	2.76	6.08
<b>2SM 060</b>	66.0	2.598	116.3	4.578	107.3	4.224	125	4.921	2.91	6.41
<b>2SM 080</b>	68.1	2.681	120.5	4.744	111.5	4.390	130	5.118	3.06	6.75
<b>2SM 110</b>	70.2	2.763	124.6	4.905	115.6	4.551	135	5.314	3.16	6.97
<b>2SM 140</b>	72.7	2.862	129.6	5.102	120.6	4.748	140	5.512	3.26	7.19
<b>2SM 160</b>	74.8	2.944	133.8	5.267	124.8	4.913	145	5.709	3.41	7.52
<b>2SM 190</b>	77.3	3.043	138.8	5.464	129.8	5.110	150	5.905	3.56	7.85
<b>2SM 220</b>	79.8	3.141	143.8	5.661	134.8	5.307	155	6.102	3.71	8.18
<b>2SM 260</b>	82.7	3.256	149.6	5.890	140.6	5.535	160	6.299	3.86	8.51
<b>2SM 310</b>	86.9	3.421	158.0	6.220	149.0	5.866	170	6.692	4.07	8.97

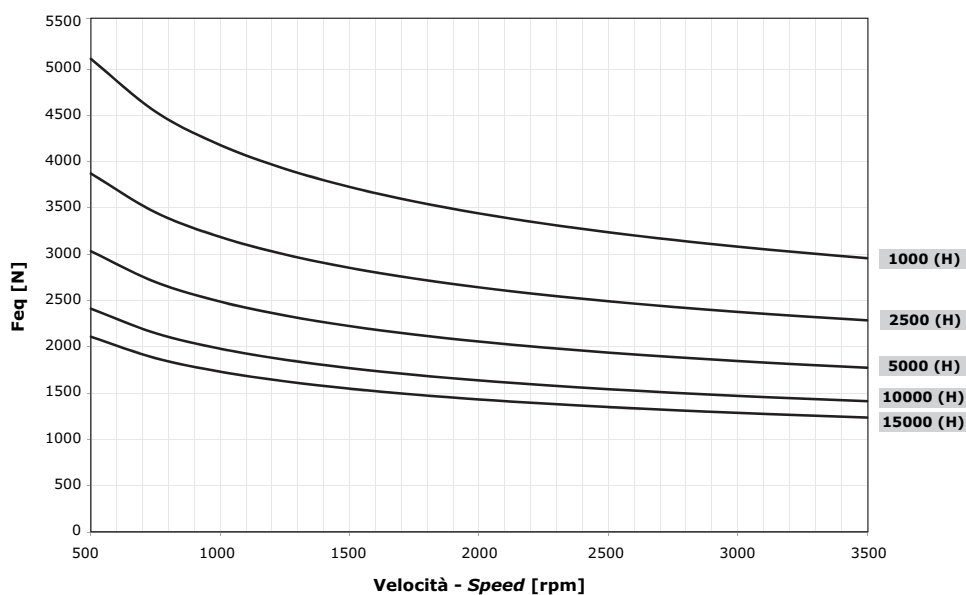
**MOTORI AD INGRANAGGI GRUPPO 2SM**  
**GEAR MOTORS GROUP 2SM**

**CARICO DINAMICO EQUIVALENTE • EQUIVALENT DYNAMIC LOAD**



In caso di carichi combinati applicati all'albero (radiale + assiale) contattare il nostro Ufficio Tecnico.  
 In case of both radial and axial loads applied to the shaft please contact our technical department.

**DIAGRAMMA CUSCINETTI • DIAGRAM BEARING EXPECTED LIFE**



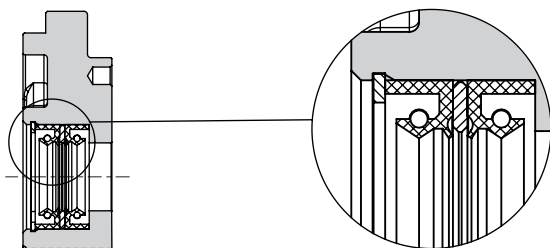
**MOTORI AD INGRANAGGI GRUPPO 2SM**  
**GEAR MOTORS GROUP 2SM**
**CODICE ORDINAZIONE • ORDER CODE**
**2SM - G - 140 - D - EUR - H - N - 10 - 0 - G**

SIGLA - CODE	TIPO - TYPE	DESCRIZIONE - DESCRIPTION	PAGINA - PAGE
<b>2SM</b>	Tipo motore <i>Motor type</i>	Motore - gruppo 2 <i>Motor - group 2</i>	101
<b>G</b>	Materiale flangia e coperchio <i>Flange and cover material</i>	<b>A</b> = alluminio / <i>aluminium</i> <b>G</b> = Ghisa / <i>Cast iron</i>	139
<b>140</b>	Cilindrata <i>Displacement</i>	Cilindrata = 14 cm <sup>3</sup> /g <i>Displacement = 0.85 in<sup>3</sup>/rev</i>	101
<b>D</b>	Senso di rotazione <i>Rotation wise</i>	<b>D</b> = Rotazione destra / <i>Clockwise rotation</i> <b>S</b> = Rotazione sinistra / <i>Anticlockwise rotation</i> <b>R</b> = Reversibile / <i>Reversible</i> <b>X</b> = Reversibile con drenaggio interno <i>Reversible with internal drain</i>	104
<b>EUR</b>	Tipo Flangia <i>Flange type</i>	Flangia standard <i>Standard flange</i>	139
<b>H</b>	Tipo anello di tenuta <i>Seal ring type</i>	Vedi tabella compatibilità <i>See compatibility table</i>	
<b>N</b>	Tipo guarnizione <i>Gasket type</i>	<b>N</b> = NBR <b>V</b> = Viton	140
<b>10</b>	Tipo Albero <i>Shaft type</i>	Vedi tabella compatibilità <i>See compatibility table</i>	
<b>0</b>	Posizione connessione <i>Connection position</i>	Vedi tabella compatibilità <i>See compatibility table</i>	144
<b>G</b>	Tipo connessione <i>Connection type</i>	Vedi tabella compatibilità <i>See compatibility table</i>	145


**VERSIONI CON DOPPIO PARAOLIO • DOUBLE SHAFT SEAL VERSION**

Disponibili versioni con doppio paraolio per EUR, SAEA, SAEAOR e B50C.

Available versions with double shaft seal for EUR, SAEA, SAEAOR and B50C.



esempio • example:

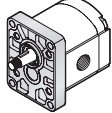
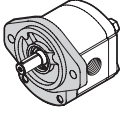
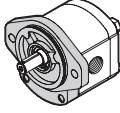
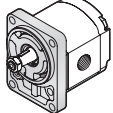
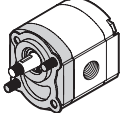
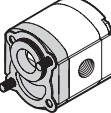
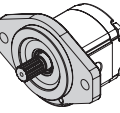
**2SM - A - 140 - D - EUR - SAE2 - N - 10 - 0 - G**
**SAE2**= Doppio paraolio / *Double Shaft Seal*

Nota - La versione con paraolio è fornita con anelli a bassa pressione o alta pressione tipo K. (vedi pag.139).

Note - The version with shaft seal is supplied with K rings type with low pressure or high pressure. (see page 139).

**MOTORI AD INGRANAGGI GRUPPO 2SM**  
**GEAR MOTORS GROUP 2SM**

**TIPOLOGIA FLANGIA • FLANGE TYPE**

	EUR	SAEA	SAEAOR	B80C	B50C	E52C	SAEB*
<b>2SM</b>							
<b>A</b> alluminio aluminium	◇	◇	◇	◇	◇	◇	non disponibile not available
<b>G</b> ghisa cast iron	◇	◇	◇	non disponibile not available	non disponibile not available	non disponibile not available	◇

◇ = Combinazione standard - Standard combination

\* Contattare il servizio commerciale. / Available soon. Please contact our Sales Dpt.

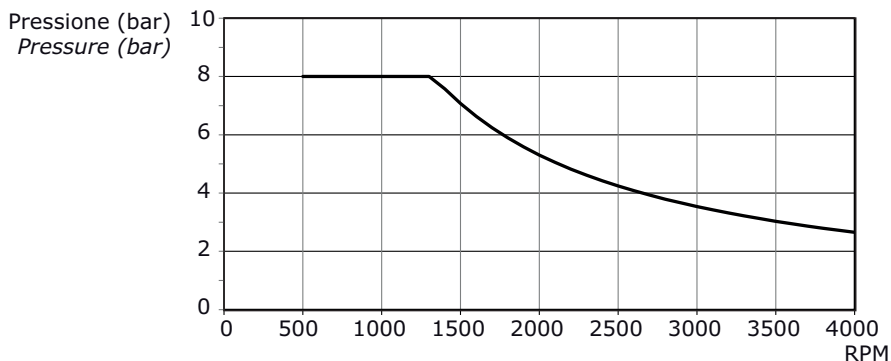
**ANELLO DI TENUTA • SEAL RING**

SIGLA - CODE	TIPO - TYPE	DIAGRAMMA - DIAGRAM
--------------	-------------	---------------------

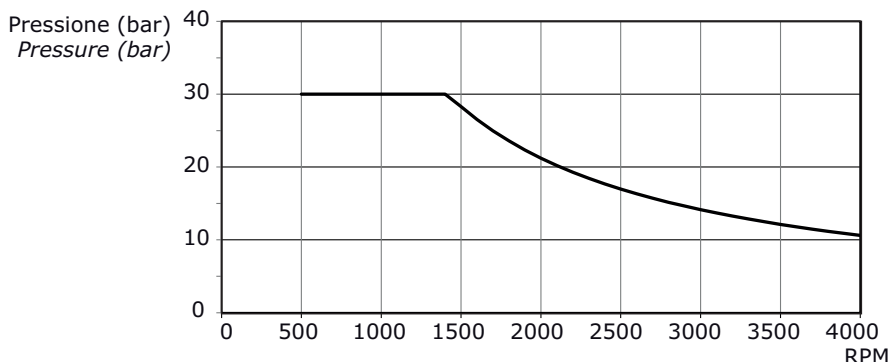
**A** Flangia senza anello di tenuta  
 Flange without seal ring

/

**H** Anello di tenuta fino a **8 bar**  
 Sealing ring up to **8 bar**



**K** Anello di tenuta fino a **30 bar**  
 Sealing ring up to **30 bar**





**MOTORI AD INGRANAGGI GRUPPO 2SM**  
**GEAR MOTORS GROUP 2SM**

**COMBINAZIONE FLANGIA - ANELLO DI TENUTA - GUARNIZIONE • FLANGE - SEAL RING - GASKET COMBINATION**

2SM	EUR			SAEA			SAEAOR			B80C			B50C			E52C	SAEB*
	Anello - Seal ring			Anello - Seal ring			Anello - Seal ring			Anello - Seal ring			Anello - Seal ring			Anello - Seal ring	Anello-Seal ring
	H	K	W	H	K	W	H	K	W	H	K	W	H	K	W	A	H
NBR	N	◇	◇	◇	◇	◇	◇	◇	◇	◇	◇	◇	◇	◇	◇	◇	◇
Viton	V	●	●	●	●	●	●	●	●	●	●	●	●	●	●	●	●

esempio • example: **1SM - A - 140 - D - EUR - H - N - 10 - 0 - G**

**EUR** = Flangia europea / European flange

**H** = Anello tenuta fino a 8 bar / Seal ring up to 8 bar

**N** = Guarnizione in NBR / NBR o-ring

**COMBINAZIONE ALBERO - FLANGIA • SHAFT - FLANGE COMBINATION**

2SM	EUR	SAEA	SAEAOR	B80C	B50C	E52C	SAEB*
<b>10</b> Conico 1:8-Tapered 1:8	◇	●	●	●	◇		●
<b>11</b> Conico 1:5-Tapered 1:5	●	●	●	◇	●		●
<b>12</b> Cilindrico EUR-EUR Parallel shaft	●	●	●	●	●		●
<b>13</b> Cilindrico SAEA-SAEA parallel shaft	●	◇	◇	●	●		●
<b>14</b> Scanalato SAEA 9T-SAEA 9T splined	●	◇	◇	●	●		●
<b>15</b> Scanalato DIN5482 9T (26/24) DIN5482 9T splined (26/24)	●	●	●	◇	●		●
<b>16</b> Scanalato DIN5482 9T (20)-DIN5482 9T splined (20)	●	●	●	◇	●		●
<b>17</b> Fresato a dente frontale-Dihedral claw						◇	
<b>40</b> Scanalato SAE 10 denti (52)-SAE 10T splined (52)		●	●				●
<b>41</b> Scanalato SAE 10T (37.5)-SAE 10T splined (37.5)		●	●				●
<b>42</b> Scanalato SAEA 11T (55.6)-SAEA 11T splined (55.6)		●	●				●
<b>43</b> Scanalato SAEA 11T (31.5)-SAEA 11T splined (31.5)		●	●				●
<b>44</b> Scanalato SAEA 11T (13.5)-SAEA 11T splined (13.5)						●	
<b>45</b> Scanalato SAEB 13T (41.2)-SAEB 13T splined							◇

◇ = Combinazione standard - Standard combination

● = Combinazione disponibile - Available combination

\* Contattare il Servizio Commerciale. / Available soon. Please contact our Sales Dpt.

**MOTORI AD INGRANAGGI GRUPPO 2SM**  
**GEAR MOTORS GROUP 2SM**

**2SM**

DIMENSIONI ALBERO - SHAFT DIMENSIONS

<p><b>10</b>                      Conico 1:8                      Tapered 1:8</p> <p>Coppia 140 Nm                      Torque 104 ft-lbs</p>	<p>Disponibile per - available for: <b>EUR-SAEA-SAEAOR-B50C-P400D-SUPEUR</b></p>	<p>Disponibile per - available for: <b>B80C</b></p>
<p><b>11</b>                      Conico 1:5                      Tapered 1:5</p> <p>Coppia 140 Nm                      Torque 104 ft-lbs</p>	<p>Disponibile per - available for: <b>EUR-SAEA-SAEAOR-B50C</b></p>	<p>Disponibile per - available for: <b>B80C</b></p>
<p><b>12</b>                      Cilindrico EUR                      EUR Parall shaft</p> <p>Coppia 80 Nm                      Torque 59 ft-lbs</p>	<p>Disponibile per - available for: <b>EUR-SAEA-SAEAOR-B50C</b></p>	<p>Disponibile per - available for: <b>B80C</b></p>
<p><b>13</b>                      Cilindrico SAEA                      SAEA parall shaft</p> <p>Coppia 90 Nm                      Torque 67 ft-lbs</p>	<p>Disponibile per - available for: <b>EUR-SAEA-SAEAOR-B50C</b></p>	<p>Disponibile per - available for: <b>B80C</b></p>
<p><b>14</b>                      Scanalato                      SAEA 9T                      SAEA 9T                      splined</p> <p>Coppia 100 Nm                      Torque 74 ft-lbs</p>	<p>Disponibile per - available for: <b>EUR-SAEA-SAEAOR-B50C</b></p>	<p>Disponibile per - available for: <b>B80C</b></p>

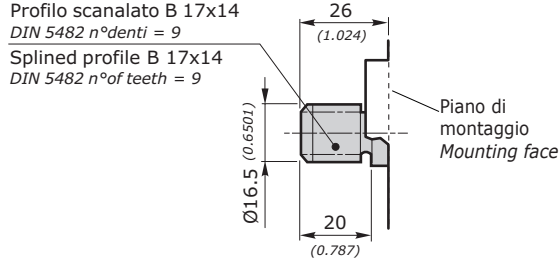
**MOTORI AD INGRANAGGI GRUPPO 2SM**  
**GEAR MOTORS GROUP 2SM**

**2SM**

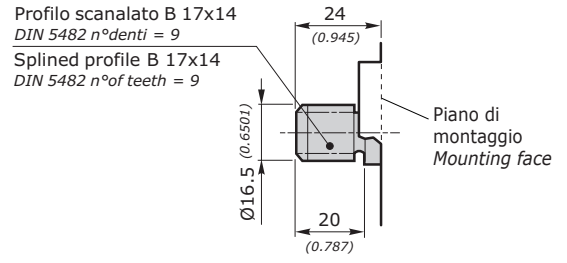
DIMENSIONI ALBERO - SHAFT DIMENSIONS

**15**  
Scanalato  
DIN5482 9T  
(26/24)  
DIN5482 9T  
splined (26/24)

Coppia 100 Nm  
Torque 74 ft-lbs



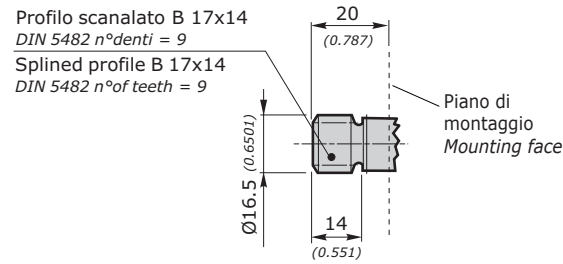
Disponibile per - available for: **EUR - SAEA - SAEAOR - B50C**



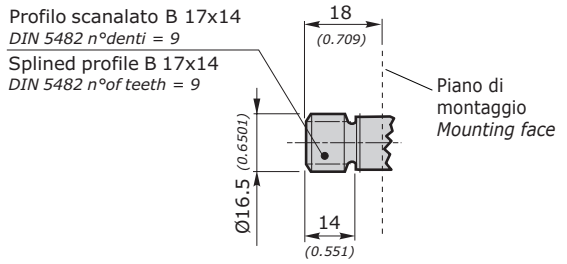
Disponibile per - available for: **B80C**

**16**  
Scanalato  
DIN5482  
9T (20)  
DIN5482 9T  
splined (20)

Coppia 100 Nm  
Torque 74 ft-lbs



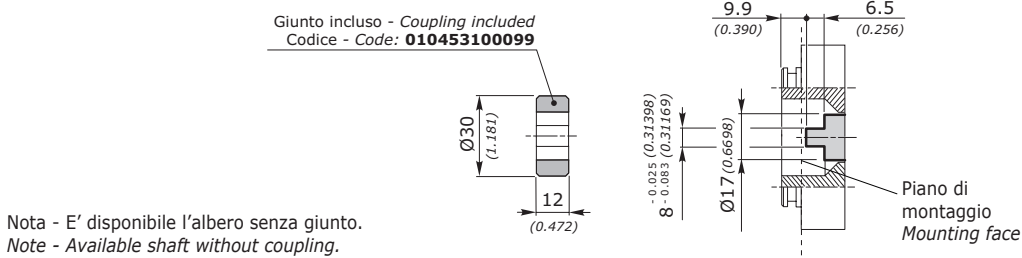
Disponibile per - available for: **EUR - SAEA - SAEAOR - B50C**



Disponibile per - available for: **B80C**

**17**  
Fresato a dent  
frontale  
Dihedral claw

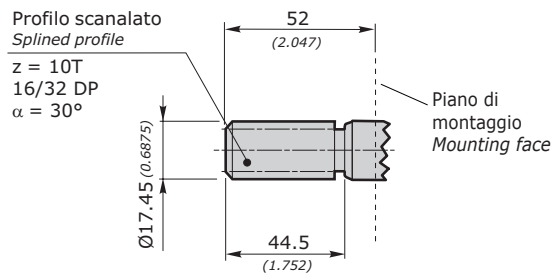
Coppia 80 Nm  
Torque 59 ft-lbs



Disponibile per - available for: **E52C**

**40**  
Scanalato SAE  
10 T (52)  
SAE 10T  
splined (52)

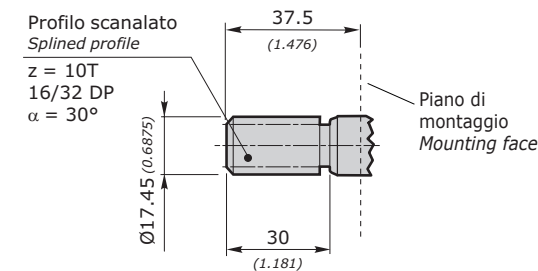
Coppia 130 Nm  
Torque 96 ft-lbs



Disponibile per - available for: **SAEA - SAEAOR**

**41**  
Scanalato SAE  
10T (37.5)  
SAE 10T  
splined (37.5)

Coppia 130 Nm  
Torque 96 ft-lbs



Disponibile per - available for: **SAEA - SAEAOR**

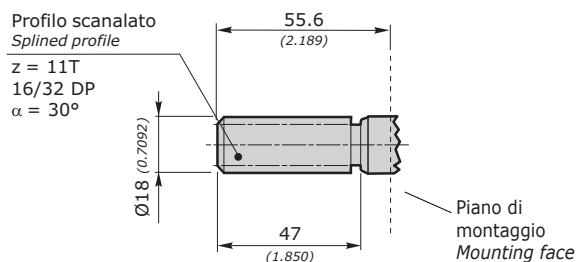
**MOTORI AD INGRANAGGI GRUPPO 2SM**  
**GEAR MOTORS GROUP 2SM**

**2SM**

DIMENSIONI ALBERO - SHAFT DIMENSIONS

**42**  
Scanalato SAEA  
11T (55.6)  
SAEA 11T  
splined (55.6)

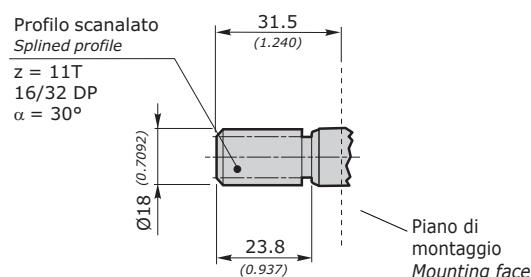
Coppia 150 Nm  
Torque 111 ft-lbs



Disponibile per - available for: **SAEA - SAEAOR**

**43**  
Scanalato SAEA  
11T (31.5)  
SAEA 11T  
splined (31.5)

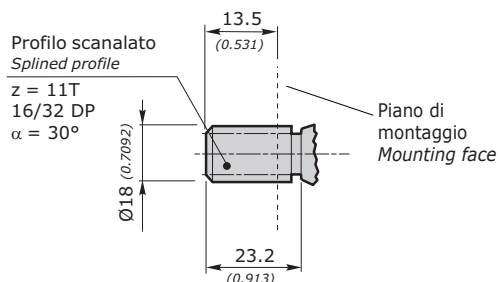
Coppia 150 Nm  
Torque 111 ft-lbs



Disponibile per - available for: **SAEA - SAEAOR**

**44**  
Scanalato SAEB  
11T (13.5)  
SAEA 11T  
splined (13.5)

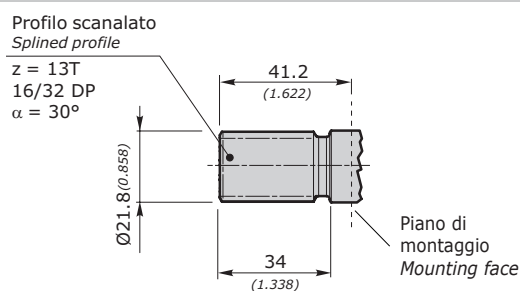
Coppia 150 Nm  
Torque 111 ft-lbs



Disponibile per - available for: **E52C**

**45**  
Scanalato SAEB  
13T (41.2)  
SAEB 13T  
splined (41.2)

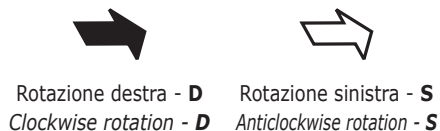
Coppia 280 Nm  
Torque 207 ft-lbs



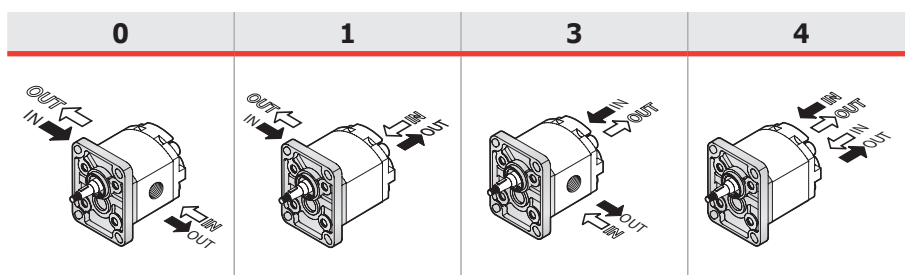
Disponibile per - available for: **SAEB**

**MOTORI AD INGRANAGGI GRUPPO 2SM**  
**GEAR MOTORS GROUP 2SM**

**POSIZIONE CONNESSIONE PER MOTORI (D-S) • CONNECTION POSITION FOR (D-S) MOTORS**



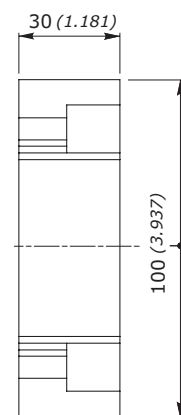
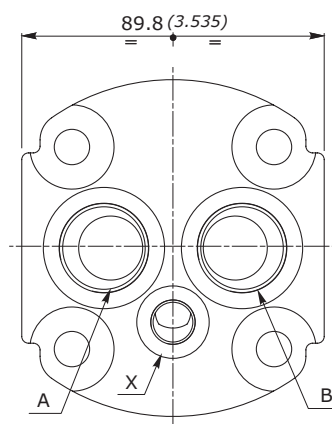
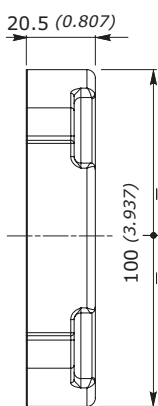
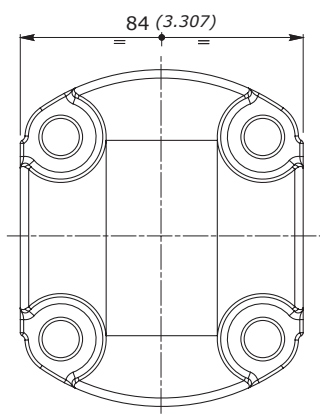
**POSIZIONE CONNESSIONE PER MOTORI (R) • CONNECTION POSITION FOR (R) MOTORS**



**COPERCHIO STANDARD • STANDARD COVER**

Per posizione **0**  
 For position **0**

Per posizioni **1, 3, 4**  
 For position **1, 3, 4**

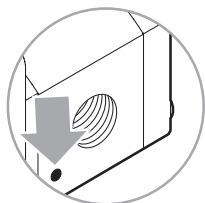


CONNESSIONI / CONNECTION			
	A	B	X
<b>GAS</b>	G 3/4	G 3/4	G 1/4
<b>SAE</b>	SAE 12	SAE 12	SAE 6

**MOTORI AD INGRANAGGI GRUPPO 2SM**  
**GEAR MOTORS GROUP 2SM**

**TIPO CONNESSIONE PER MOTORI D-S • CONNECTION TYPE FOR D-S MOTORS**

Le connessioni rappresentate corrispondono alle versioni standard; per connessioni differenti, contattare il nostro Ufficio Commerciale. *The connection types shown correspond to standard configurations; for different applications contact our Commercial Dept.*



Il segno del corpo indica il LATO SCARICO per i motori  
*The sign on the body identifies the OUTLET SIDE for the motors*

**IN = INGRESSO - INLET**  
**OUT = SCARICO - OUTLET**

2SM		POSIZIONE CONNESSIONE - CONNECTION POSITION				
		0	1	3	4	DRENAGGIO DRAIN
GAS	<b>G</b>	◇	◇	◇	◇	◇
UNF	<b>U</b>	◇	◇	◇	◇	◇
	<b>W</b>	◇				
FLANGIATE FLANGED	<b>T</b>	◇				
	<b>N</b>	◇				
	<b>M</b>	◇				
	<b>F</b>	◇				

GAS	UNI ISO 228/1	SIGLA CODE	CIL. DISPL.	SCARICO - OUTLET OUT			INGRESSO - INLET IN		
				A	B	↺	A	B	↺
		<b>G</b>	40	G 1/2"	16 [mm] 0.630 [inch]	50 [Nm] 443 [in.lbs]	G 1/2"	16 [mm] 0.630 [inch]	50 [Nm] 443 [in.lbs]
			60						
			80						
			110	G 3/4"	17 [mm] 0.670 [inch]	60 [Nm] 531 [in.lbs]			
			140						
			160						
			190						
			220						
			260						
			310						

UNF	ANSI/ASME B1.1	SIGLA CODE	CIL. DISPL.	SCARICO - OUTLET OUT			INGRESSO - INLET IN						
				A	B	↺	A	B	↺				
		<b>U</b>	40	SAE 10 7/8"-14 UNF	17 [mm] 0.670 [inch]	55 [Nm] 487 [in.lbs]	SAE 10 7/8"-14 UNF	17 [mm] 0.670 [inch]	55 [Nm] 487 [in.lbs]				
			60										
			80										
			110	SAE 12 1"1/16-12 UN	20 [mm] 0.788 [inch]	60 [Nm] 531 [in.lbs]							
			140										
			160										
			190										
			220										
			260	<b>W</b>	SAE 16 1"5/16-12 UN	20 [mm] 0.788 [inch]				70 [Nm] 620 [in.lbs]	SAE 12 1"1/16-12 UN	20 [mm] 0.788 [inch]	60 [Nm] 531 [in.lbs]
			310										
			40										
			60										
			80										
			110										
			140										
			160										
190													
220													
260													
310													

**MOTORI AD INGRANAGGI GRUPPO 2SM**  
**GEAR MOTORS GROUP 2SM**

FLANGIATE FLANGED	ISO/R 262	SIGLA CODE	CIL. DISPL.	SCARICO - OUTLET OUT					INGRESSO - INLET IN							
				A	B	C	D		A	B	C	D				
		T	40													
			60													
			80													
			110	20	40	M6	15	8	15	35	M6	15	8			
			140	[mm]	[mm]		[mm]	[Nm]	[mm]	[mm]		[mm]	[Nm]			
			160	0.787	1.575		0.591	71	0.591	1.378		0.591	71			
			190	[inch]	[inch]		[inch]	[in.lbs]	[inch]	[inch]		[inch]	[in.lbs]			
			220													
			260													
			310													
		N	40	13	30	M6	15	8								
			60	[mm]	[mm]		[mm]	[Nm]								
			80	0.512	1.181		0.591	71								
			110						13	30	M6	15	8			
			140						[mm]	[mm]		[mm]	[Nm]			
			160	19	40	M8	14	15	0.512	1.181		0.591	71			
			190	[mm]	[mm]		[mm]	[Nm]	[inch]	[inch]		[inch]	[in.lbs]			
			220	0.748	1.575		0.552	133								
			260	[inch]	[inch]		[inch]	[in.lbs]								
			310													
		M	40	non disponibile not available					non disponibile not available							
			60													
			80													
			110													
			140													
			160	19	40	M8	14	15	19	40	M8	14	15			
			190	[mm]	[mm]		[mm]	[Nm]	[mm]	[mm]		[mm]	[Nm]			
			220	0.748	1.575		0.552	133	0.748	1.575		0.552	133			
			260	[inch]	[inch]		[inch]	[in.lbs]	[inch]	[inch]		[inch]	[in.lbs]			
			310													

Standard Galtech

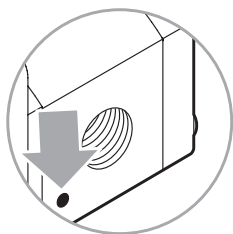
Galtech standard

FLANGIATE FLANGED	ISO/R 262	SIGLA CODE	CIL. DISPL.	SCARICO - OUTLET OUT					INGRESSO - INLET IN						
				A	B	C	D	E		A	B	C	D	E	
		F	40	20	17,4	38	M6	15	8						
			60	[mm]	[mm]	[mm]		[mm]	[Nm]						
			80	0.787	0.685	1.496		0.591	71						
			110	[inch]	[inch]	[inch]		[inch]	[in.lbs]						
			140							15	17,4	38	M6	15	8
			160							[mm]	[mm]	[mm]		[mm]	[Nm]
			190	26	47.6	22.4	M6	15	8	0.591	0.685	1.496		0.591	71
			220	[mm]	[mm]	[mm]		[mm]	[Nm]	[inch]	[inch]	[inch]		[inch]	[in.lbs]
			260	1.024	1.874	0.882		0.591	71						
			310	[inch]	[inch]	[inch]		[inch]	[in.lbs]						

**MOTORI AD INGRANAGGI GRUPPO 2SM**  
**GEAR MOTORS GROUP 2SM**

**TIPO CONNESSIONE PER MOTORI (R) • CONNECTION TYPE FOR (R) MOTORS**

Le connessioni rappresentate corrispondono alle versioni standard; per connessioni differenti, contattare il nostro Ufficio Commerciale. *The connection types shown correspond to standard configurations; for different applications contact our Commercial Dept.*



L'eventuale segno sul corpo dei Motori REVERSIBILI non è da considerare. *Any sign on the body of REVERSIBLE Motors has not to be considered.*

**IN = INGRESSO - INLET**  
**OUT = SCARICO - OUTLET**

GAS	<b>G</b>	◇	◇	◇	◇
UNF	<b>U</b>	◇	◇	◇	◇
FLANGIATE FLANGED	<b>T</b>	◇			
	<b>N</b>	◇			
	<b>F</b>	◇			

GAS	UNI ISO 228/1	SIGLA CODE	CIL. DISPL.	SCARICO - OUTLET OUT			INGRESSO - INLET IN		
				A	B	↻	A	B	↻
		<b>G</b>	40	G 1/2"	16 [mm] 0.630 [inch]	50 [Nm] 443 [in.lbs]	G 1/2"	16 [mm] 0.630 [inch]	50 [Nm] 443 [in.lbs]
			60						
			80						
			110	G 3/4"	17 [mm] 0.670 [inch]	60 [Nm] 531 [in.lbs]	G 3/4"	17 [mm] 0.670 [inch]	60 [Nm] 531 [in.lbs]
			140						
			160						
			190						
			220						
			260						
			310						

UNF	ANSI/ASME B1.1	SIGLA CODE	CIL. DISPL.	SCARICO - OUTLET OUT			INGRESSO - INLET IN		
				A	B	↻	A	B	↻
		<b>U</b>	40	SAE 10 7/8"-14 UNF	17 [mm] 0.670 [inch]	55 [Nm] 487 [in.lbs]	SAE 10 7/8"-14 UNF	17 [mm] 0.670 [inch]	55 [Nm] 487 [in.lbs]
			60						
			80						
			110	SAE 12 1 1/16-12 UN	20 [mm] 0.788 [inch]	60 [Nm] 531 [in.lbs]	SAE 12 1 1/16-12 UN	20 [mm] 0.788 [inch]	60 [Nm] 531 [in.lbs]
			140						
			160						
			190						
			220						
			260						
			310						



**MOTORI AD INGRANAGGI GRUPPO 2SM**  
**GEAR MOTORS GROUP 2SM**

FLANGIATE FLANGED	ISO/R 262	SIGLA CODE	CIL. DISPL.	SCARICO - OUTLET OUT					INGRESSO - INLET IN				
				A	B	C	D		A	B	C	D	
	T	40	15 [mm]	35 [mm]	M6	15 [mm]	8 [Nm]	15 [mm]	35 [mm]	M6	15 [mm]	8 [Nm]	
		60	0.591 [inch]	1.378 [inch]		0.591 [inch]	71 [in.lbs]	0.591 [inch]	1.378 [inch]		0.591 [inch]	71 [in.lbs]	
		80											
		110											
		140											
		160	20 [mm]	40 [mm]	M6	15 [mm]	8 [Nm]	20 [mm]	40 [mm]	M6	15 [mm]	8 [Nm]	
		190	0.787 [inch]	1.575 [inch]		0.591 [inch]	71 [in.lbs]	0.787 [inch]	1.575 [inch]		0.591 [inch]	71 [in.lbs]	
		220											
		260											
		310											
	N	40	13 [mm]	30 [mm]	M6	15 [mm]	8 [Nm]	13 [mm]	30 [mm]	M6	15 [mm]	8 [Nm]	
		60	0.512 [inch]	1.181 [inch]		0.591 [inch]	71 [in.lbs]	0.512 [inch]	1.181 [inch]		0.591 [inch]	71 [in.lbs]	
		80											
		110											
		140											
		160	19 [mm]	40 [mm]	M8	14 [mm]	15 [Nm]	19 [mm]	40 [mm]	M8	14 [mm]	15 [Nm]	
		190	0.748 [inch]	1.575 [inch]		0.552 [inch]	133 [in.lbs]	0.748 [inch]	1.575 [inch]		0.552 [inch]	133 [in.lbs]	
		220											
		260											
		310											

Standard Galtech

Galtech standard

FLANGIATE FLANGED	ISO/R 262	SIGLA CODE	CIL. DISPL.	SCARICO - OUTLET OUT					INGRESSO - INLET IN						
				A	B	C	D	E		A	B	C	D	E	
	F*	40	20	17,4	38	M6	15	8	20	17,4	38	M6	15	8	
		60	[mm]	[mm]	[mm]		[mm]	[Nm]	[mm]	[mm]	[mm]		[mm]	[mm]	[Nm]
		80	0.787	0.685	1.496		0.591	71	0.787	0.685	1.496		0.591	71	
		110													
		140													
		160	26	47.6	22.4	M6	15	8	26	47.6	22.4	M6	15	8	
		190	[mm]	[mm]	[mm]		[mm]	[Nm]	[mm]	[mm]	[mm]		[mm]	[mm]	[Nm]
		220	1.024	1.874	0.882		0.591	71	1.024	1.874	0.882		0.591	71	
		260	[inch]	[inch]	[inch]		[inch]	[in.lbs]	[inch]	[inch]	[inch]		[inch]	[in.lbs]	
		310													

\*: Le flange non corrispondono a norma SAEJ518. Flange a norma disponibili a richiesta, contattare il Servizio Commerciale.

\*: Flanges F do not correspond to SAEJ518. Flanges SAEJ518 available on request, please contact our Sales Dpt.

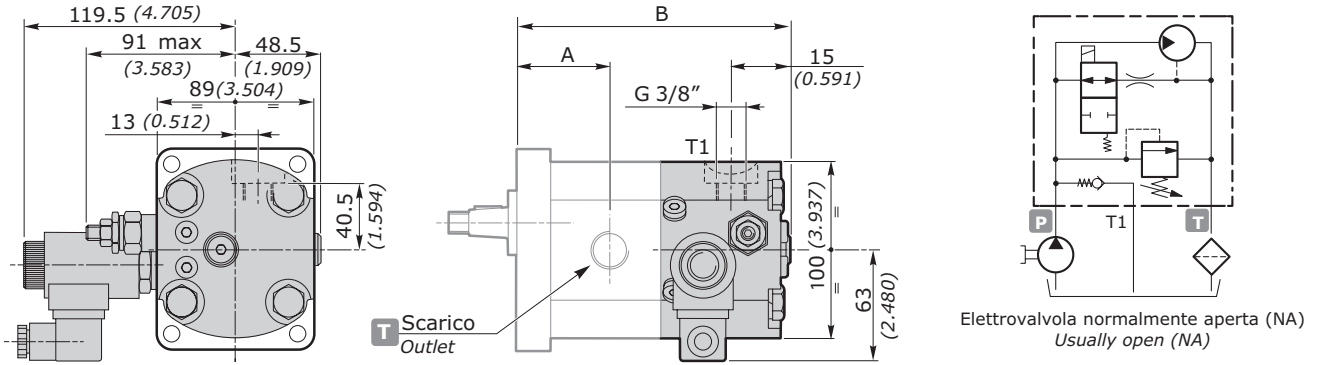
**MOTORI AD INGRANAGGI GRUPPO 2SM**  
**GEAR MOTORS GROUP 2SM**

**VLP**

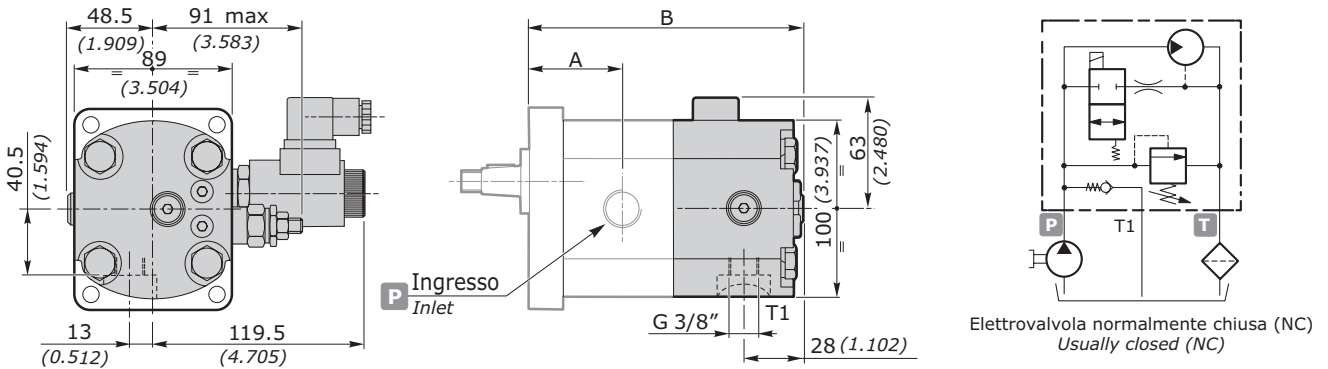
MOTORE UNIDIREZIONALE A 2 VELOCITÀ CON VALVOLA LIMITATRICE DI PRESSIONE  
 2 SPEED UNIDIRECTIONAL MOTOR WITH PRESSURE RELIEF VALVE

Solo per motori con flangia e coperchio in alluminio. *Only for motors with aluminium flange and cover.*

ROTAZIONE DESTRA - CLOCKWISE ROTATION



ROTAZIONE SINISTRA - ANTICLOCKWISE ROTATION



<b>A</b>	mm	44.4	46.0	48.1	50.2	52.7	54.8	57.3	59.8	62.7	66.9
	inch	1.748	1.811	1.894	1.976	2.075	2.157	2.256	2.354	2.469	2.636
<b>B</b>	mm	142.3	145.6	149.8	153.9	158.9	163.1	168.1	173.1	182.0	190.4
	inch	5.602	5.732	5.898	6.059	6.256	6.421	6.618	6.815	7.165	7.502

esempio • example: **2SM - A - 080 - D - EUR - H - N - 10 - 0 - N - NA 24VDC VLP (N 150)**

- NA** = Normalmente aperta / *Usually open*    **NC** = Normalmente chiusa / *Usually closed*
- 24VDC** = Tensione magnete / *Electromagnete voltage* (12VDC - 24VDC - 48VDC)
- VLP** = Coperchio con VPL / *Cover with VPL*
- N** = Tipo molla - vedi tabella / *Spring type - see table*
- 150** = Taratura - vedi tabella / *Setting - see table*

TIPO - TYPE	CAMPI DI TARATURE - CALIBRATION FIELDS					
	molla bianca - white spring	<b>B</b>	molla nera - black spring	<b>N</b>	molla rossa - red spring	<b>R</b>
bar	30 ÷ 80		81 ÷ 200		201 ÷ 350	
psi	435 ÷ 1160		1175 ÷ 2900		2915 ÷ 5075	
STANDARD	70 bar (1015 psi)		150 bar (2175 psi)		250 bar (3625 psi)	

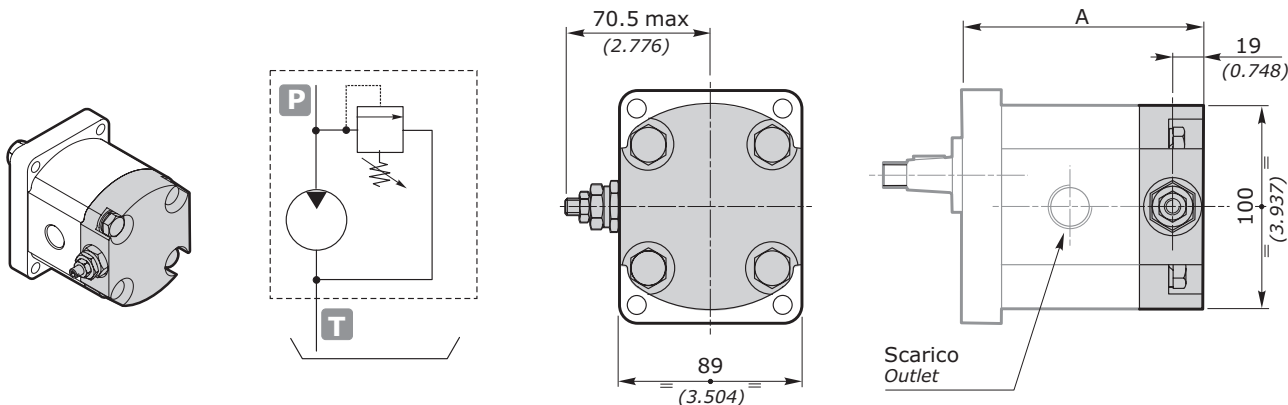
NOTA: In caso di omissione del valore di taratura, esso sarà inteso standard (vedi tabella).  
 NOTE: Without setting request, it will be considered standard (see table).

**MOTORI AD INGRANAGGI GRUPPO 2SM**  
**GEAR MOTORS GROUP 2SM**

**OPZIONI • OPTIONS**

**VLPI**

VALVOLA LIMITATRICE DI PRESSIONE A SCARICO INTERNO  
PRESSURE RELIEF VALVE WITH INTERNAL EXHAUST



GRUPPO GROUP 2	EUR-SAEA-B50C		A B80C		E52C	
	mm	inch	mm	inch	mm	inch
<b>2SM 040</b>	104.8	4.126	106.8	4.205	102.1	4.020
<b>2SM 060</b>	108.1	4.256	110.1	4.335	105.4	4.150
<b>2SM 080</b>	112.3	4.421	114.3	4.500	109.6	4.315
<b>2SM 110</b>	116.4	4.583	118.4	4.661	113.7	4.476
<b>2SM 140</b>	121.4	4.780	123.4	4.858	118.7	4.673
<b>2SM 160</b>	125.6	4.945	127.6	5.024	122.9	4.839
<b>2SM 190</b>	130.6	5.142	132.6	5.220	127.9	5.035
<b>2SM 220</b>	135.6	5.339	137.6	5.417	132.9	5.232
<b>2SM 260</b>	141.4	5.567	143.4	5.646	138.7	5.461
<b>2SM 310</b>	149.8	5.902	151.8	5.981	147.1	5.796

La valvola limitatrice di pressione si applica sostituendo il coperchio posteriore. Il coperchio VLP è disponibile in alluminio. E' rappresentato un motore con rotazione destra. Nei motori con rotazione sinistra, la valvola è nel lato opposto.

*The pressure relief valve can be applied by replacing the rear cover. VLP cover is available in aluminum. The motor shown here is clockwise rotation. In case of Motor with anticlockwise rotation, the valve is on the opposite side.*

esempio • example: **2SM - A - 140 - D - EUR - H - N - 10 - 0 - G - VLPI (N 120)**

**VLPI** = Coperchio con VPL a scarico interno / Cover with VPL with internal exhaust

**N** = Tipo molla - vedi tabella / Spring type - see table

**120** = Taratura - vedi tabella / Setting - see table

TIPO - TYPE	CAMPI DI TARATURE - CALIBRATION FIELDS					
	molla bianca - white spring	B	molla nera - black spring	N	molla rossa - red spring	R
bar	30 ÷ 80		81 ÷ 200		201 ÷ 350	
psi	435 ÷ 1160		1175 ÷ 2900		2915 ÷ 5075	
STANDARD	70 bar (1015 psi)		150 bar (2175 psi)		250 bar (3625 psi)	

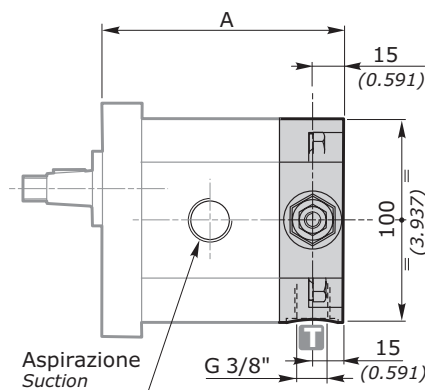
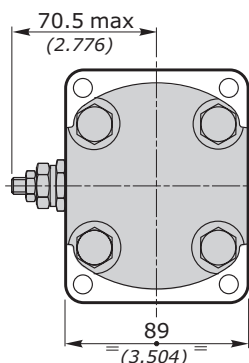
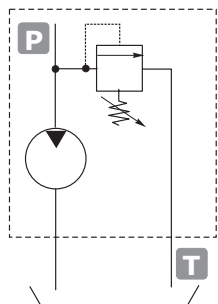
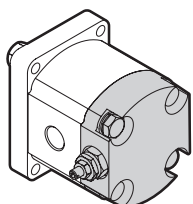
NOTA: In caso di omissione del valore di taratura, esso sarà inteso standard (vedi tabella).

NOTE: Without setting request, it will be considered standard (see table).

**MOTORI AD INGRANAGGI GRUPPO 2SM**  
**GEAR MOTORS GROUP 2SM**

**VLPE**

VALVOLA LIMITATRICE DI PRESSIONE A SCARICO ESTERNO  
 PRESSURE RELIEF VALVE WITH EXTERNAL EXHAUST



GRUPPO GROUP 2	EUR-SAEA-B50C		A B80C		E52C	
	mm	inch	mm	inch	mm	inch
<b>2SM 040</b>	100.8	3.969	102.8	4.047	98.1	3.862
<b>2SM 060</b>	104.1	4.098	106.1	4.177	101.4	3.992
<b>2SM 080</b>	108.3	4.264	110.3	4.343	105.6	4.157
<b>2SM 110</b>	112.4	4.425	114.4	4.504	109.7	4.319
<b>2SM 140</b>	117.4	4.622	119.4	4.701	114.7	4.516
<b>2SM 160</b>	121.6	4.787	123.6	4.866	118.9	4.681
<b>2SM 190</b>	126.6	4.984	128.6	5.063	123.9	4.878
<b>2SM 220</b>	131.6	5.181	133.6	5.260	128.9	5.075
<b>2SM 260</b>	137.4	5.409	139.4	5.488	134.7	5.303
<b>2SM 310</b>	145.8	5.745	147.8	5.823	143.1	5.638

La valvola limitatrice di pressione si applica sostituendo il coperchio posteriore. Il coperchio VLP è disponibile in alluminio. E' rappresentato un motore con rotazione destra. Nei motori con rotazione sinistra, la valvola è dal lato opposto

*The pressure relief valve can be applied by substituting the rear cover. VLP cover is available in aluminum. The showed motor is with clockwise rotation. In the case of motors with anticlockwise rotation, the valve is on the opposite side.*

esempio • example: **2SM - A - 140 - D - EUR - H - N - 10 - 0 - G - VLPE (N 120)**

**VLPE** = Coperchio con VPL a scarico esterno / Cover with VPL with external exhaust

**N** = Tipo molla - vedi tabella / Spring type - see table

**120** = Taratura - vedi tabella / Setting - see table

TIPO - TYPE	CAMPI DI TARATURE - CALIBRATION FIELDS					
	molla bianca - white spring	<b>B</b>	molla nera - black spring	<b>N</b>	molla rossa - red spring	<b>R</b>
bar	30 ÷ 80		81 ÷ 200		201 ÷ 350	
psi	435 ÷ 1160		1175 ÷ 2900		2915 ÷ 5075	
STANDARD	70 bar (1015 psi)		150 bar (2175 psi)		250 bar (3625 psi)	

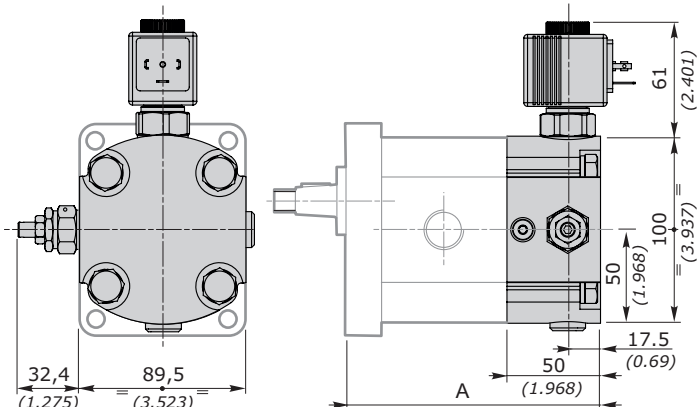
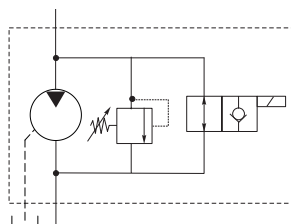
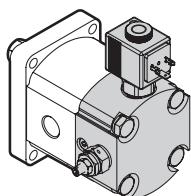
NOTA: In caso di omissione del valore di taratura, esso sarà inteso standard (vedi tabella).

NOTE: Without setting request, it will be considered standard (see table).

**MOTORI AD INGRANAGGI GRUPPO 2SM**  
**GEAR MOTORS GROUP 2SM**

**UNLD**

VALVOLA UNLOADING  
UNLOADING VALVE



GRUPPO GROUP 2	EUR-SAE B50C		A			
	mm	inch	B80C		E52C	
<b>2SM 040</b>	123.8	4.874	125.8	4.952	121.1	4.767
<b>2SM 060</b>	127.1	5.003	129.1	5.082	124.4	4.897
<b>2SM 080</b>	131.3	5.169	133.3	5.248	128.6	5.062
<b>2SM 110</b>	135.4	5.330	137.4	5.409	132.7	5.224
<b>2SM 140</b>	140.4	5.527	142.4	5.606	137.7	5.421
<b>2SP 160</b>	144.6	5.692	146.6	5.771	141.9	5.586
<b>2SP 190</b>	149.6	5.889	151.6	5.968	146.9	5.793
<b>2SP 220</b>	154.6	6.086	156.6	6.165	151.9	5.980
<b>2SP 260</b>	160.4	6.314	162.4	6.393	157.7	6.208
<b>2SP 310</b>	168.8	6.645	170.8	6.724	166.1	6.539

esempio • example: **2SM-A-140-D-EUR-H-N-10-0-T-NA(UNLD)-VLPI(N100)-12VDC**

**UNLD** = Coperchio con valvola unloading standard - Standard cover with unloading valve

**N** = Tipo molla - vedi tabella / Spring type - see table

**100** = Taratura - vedi tabella / Setting - see table

TIPO - TYPE	CAMPI DI TARATURE - CALIBRATION FIELDS					
	molla bianca - white spring	B	molla nera - black spring	N	molla rossa - red spring	R
bar	30 ÷ 80		81 ÷ 200		201 ÷ 350	
psi	435 ÷ 1160		1175 ÷ 2900		2915 ÷ 5075	
STANDARD	70 bar (1015 psi)		150 bar (2175 psi)		250 bar (3625 psi)	

NOTA: In caso di omissione del valore di taratura, esso sarà inteso standard (vedi tabella).

NOTE: Without setting request, it will be considered standard (see table).

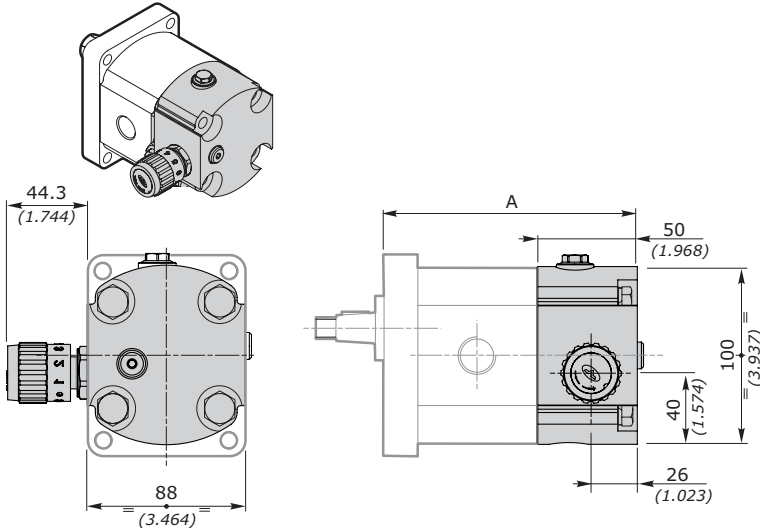
**MOTORI AD INGRANAGGI GRUPPO 2SM**  
**GEAR MOTORS GROUP 2SM**

**VRFR**

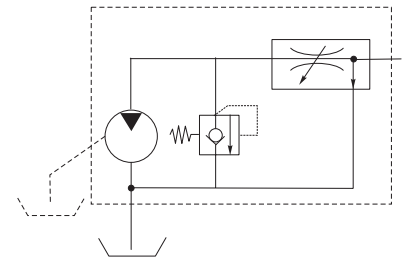
VALVOLA REGOLATRICE DI PORTATA COMPENSATA  
FLOW CONTROL PRESSURE COMPENSATED VALVE

**VRFR35-U(110)**

Fino a 35 lpm controllati in ingresso - inlet control up to 35 lpm

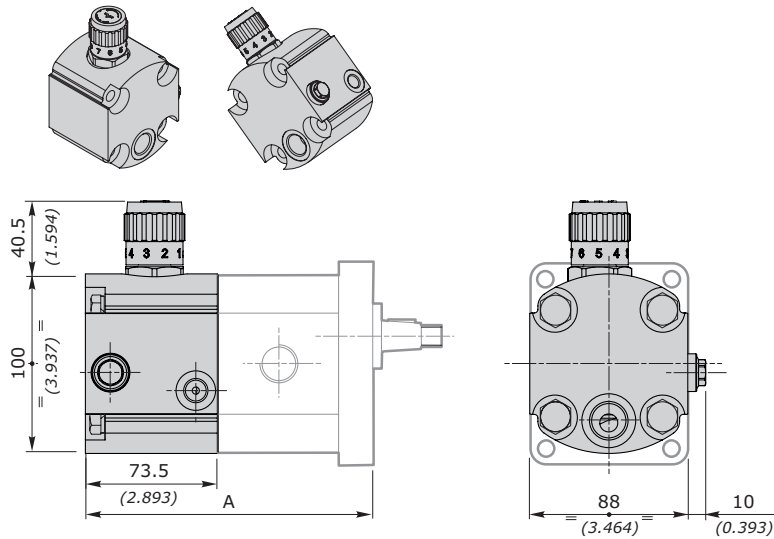


GRUPPO GROUP 2	EUR-SAE-B50C		A (PP10) B80C		E52C	
	mm	inch	mm	inch	mm	inch
2SM 040	127.8	5.031	129.8	5.110	125.1	4.925
2SM 060	131.1	5.161	133.1	5.240	128.4	5.055
2SM 080	135.3	5.326	137.3	5.405	132.6	5.220
2SM 110	139.4	5.488	141.4	5.566	136.7	5.381
2SM 140	144.4	5.685	146.4	5.763	141.7	5.578
2SM 160	148.6	5.850	150.6	5.929	145.9	5.744
2SM 190	153.6	6.047	155.6	6.125	150.9	5.940
2SM 220	158.6	6.244	160.6	6.322	155.9	6.137
2SM 260	164.4	6.472	166.4	6.551	161.7	6.366
2SM 310	172.8	6.803	174.8	6.881	170.1	6.696



**VRFR55-U(110)**

Fino a 55 lpm controllati in ingresso - inlet control up to 55 lpm



GRUPPO GROUP 2	EUR-SAE-B50C		A (PP12) B80C		E52C	
	mm	inch	mm	inch	mm	inch
2SM 040	151.3	5.956	153.3	6.035	148.6	5.850
2SM 060	154.6	6.086	156.6	6.165	151.9	5.980
2SM 080	158.8	6.251	160.8	6.330	156.1	6.145
2SM 110	162.9	6.413	164.9	6.492	160.2	6.307
2SM 140	167.9	6.610	169.9	6.688	165.2	6.503
2SM 160	172.1	6.775	174.1	6.854	169.4	6.669
2SM 190	177.1	6.972	179.1	7.051	174.4	6.866
2SM 220	182.1	7.169	184.1	7.248	179.4	7.062
2SM 260	187.9	7.397	189.9	7.476	185.2	7.291
2SM 310	196.3	7.728	198.3	7.807	193.6	7.622

esempio • example: **2SM - A - 140 - D - EUR - H - N - 10 - 0 - N - VRFR55 - U(110)**

**VRFR55** = Coperchio con valvola regolatrice di portata / Cover with flow control pressure compensated valve  
**110** = Taratura - vedi tabella / Setting - see table

VALVOLE ANTICAVITAZIONE A TARATURA FISSA - FIXED SETTING ANTICAVITATION VALVES																
bar	50	63	80	100	110	125	140	150	160	175	190	200	210	230	240	250
psi	725	914	1150	1450	1590	1800	2050	2150	2300	2550	2750	2900	3050	3350	3500	3600

NOTE: La valvola VLPI va ordinata separatamente.

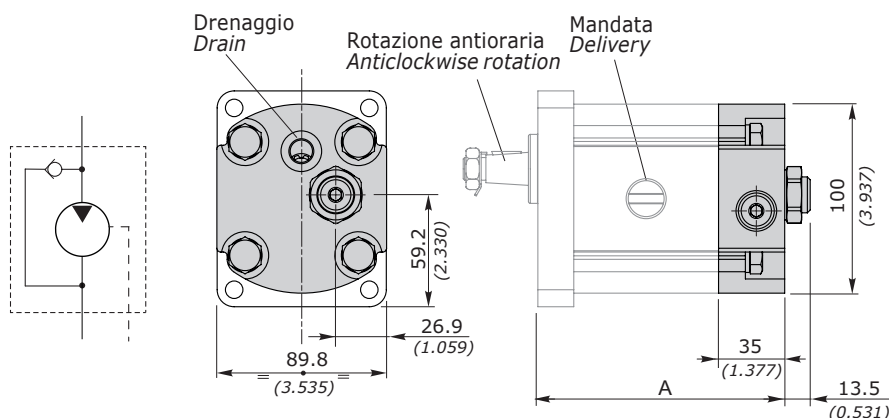
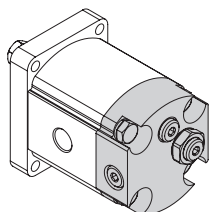
In caso si omissione del valore di taratura, esso sarà inteso standard.

NOTES: VLPI valve must be ordered separately. Without setting request, it will be considered standard.

**MOTORI AD INGRANAGGI GRUPPO 2SM**  
**GEAR MOTORS GROUP 2SM**

**VA**

VALVOLA ANTICAVITAZIONE  
ANTICAVITATION VALVE



GRUPPO GROUP 2	EUR-SAE-B50C		A B80C		E52C	
	mm	inch	mm	inch	mm	inch
<b>2SM 040</b>	109.3	4.303	111.3	4.381	106.6	4.196
<b>2SM 060</b>	112.6	4.433	114.6	4.511	109.9	4.326
<b>2SM 080</b>	116.8	4.598	118.8	4.677	114.1	4.492
<b>2SM 110</b>	120.9	4.759	122.9	4.838	118.2	4.653
<b>2SM 140</b>	125.9	4.956	127.9	5.035	123.2	4.850
<b>2SM 160</b>	130.1	5.122	132.1	5.200	127.4	5.015
<b>2SM 190</b>	135.1	5.318	137.1	5.397	132.4	5.212
<b>2SM 220</b>	140.1	5.515	142.1	5.594	137.4	5.409
<b>2SM 260</b>	145.9	5.744	147.9	5.822	143.2	5.637
<b>2SM 310</b>	154.3	6.074	156.3	6.153	151.6	5.968

esempio • example:

**2SM - A - 110 - S - EUR - H - N - 10 - 0 - G - VA**

**D** = Rotazione destra / Clockwise rotation

**S** = Rotazione sinistra / Anticlockwise rotation

**D(R)** = Reversibile, montata unidirezionale e valvola come motore destro  
Reversible, mounted as clockwise rotation and valve as right gear motor

**S(R)** = Reversibile, montata unidirezionale e valvola come motore sinistro  
Reversible, mounted as anticlockwise rotation and valve as left gear motor

**R...VA(D)/VA(S)** = Reversibile / Reversible

**VA** = Coperchio con valvola anticavitazione / Cover with anticavitation valve

**R...VA(D)** = Valvola montata come motore destro / Valve mounted as right gear motor

**R...VA(S)** = Valvola montata come motore sinistro / Valve mounted as left gear motor

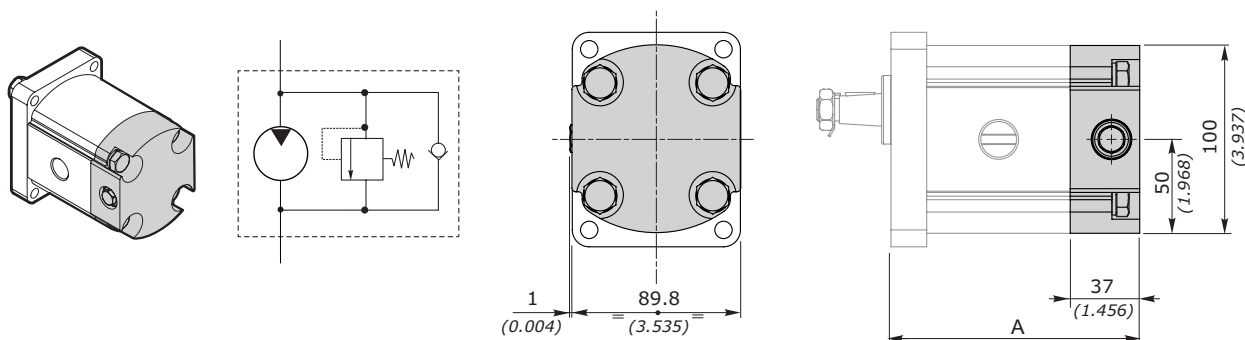
NOTA: Nell'esempio viene descritto un motore a rotazione sinistra con valvola anticavitazione montata come motore sinistro, per altre configurazioni contattare il Servizio Commerciale

NOTE: in the example is represented gear motor with anticlockwise rotation and anticavitation valve mounted as left gear motor. For other configurations please contact our Sales Dpt.

**MOTORI AD INGRANAGGI GRUPPO 2SM**  
**GEAR MOTORS GROUP 2SM**

**VMA**

VALVOLA ANTICAVITAZIONE E ANTIURTO  
 ANTICAVITATION AND ANTISHOCK VALVE



GRUPPO GROUP 2	EUR-SAEA-B50C		A B80C		E52C	
	mm	inch	mm	inch	mm	inch
<b>2SP 040</b>	111.3	4.381	113.3	4.450	108.6	4.275
<b>2SP 060</b>	114.6	4.511	116.6	4.590	111.9	4.405
<b>2SP 080</b>	118.8	4.677	120.8	4.755	116.1	4.570
<b>2SP 110</b>	122.9	4.838	124.9	4.917	120.2	4.732
<b>2SP 140</b>	127.9	5.035	129.9	5.114	125.2	4.929
<b>2SP 160</b>	132.1	5.200	134.1	5.279	129.4	5.094
<b>2SP 190</b>	137.1	5.397	139.1	5.476	134.4	5.291
<b>2SP 220</b>	142.1	5.594	144.1	5.673	139.4	5.488
<b>2SP 260</b>	147.9	5.822	149.9	5.901	145.2	5.716
<b>2SP 310</b>	156.3	6.153	158.3	6.232	153.6	6.047

esempio • example: **2SM - A - 140 - D - EUR - H - N - 10 - 0 - G - VMA \SR**

**VMA** = Coperchio con valvola anticavitazione / Cover with anticavitation valve

**VALVOLE ANTICAVITAZIONE A TARATURA FISSA - FIXED SETTING ANTICAVITATION VALVES**

bar	50	63	80	100	110	125	140	150	160	175	190	200	210	230	240	250
psi	725	914	1150	1450	1590	1800	2050	2150	2300	2550	2750	2900	3050	3350	3500	3600

NOTA: In caso di omissione del valore di taratura, esso sarà inteso standard.

NOTE: Without setting request, it will be considered standard.