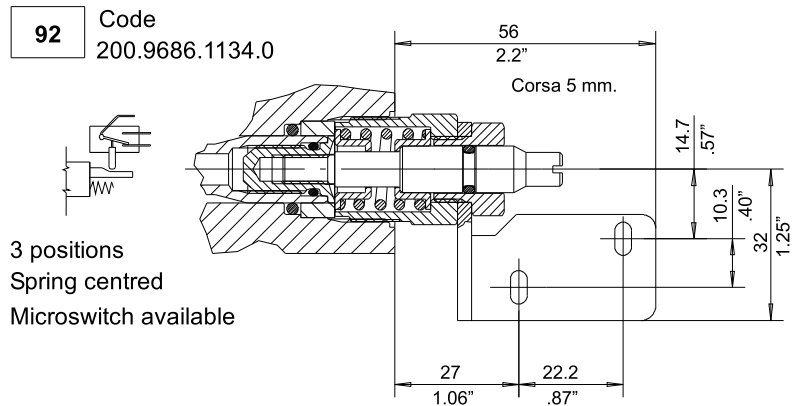
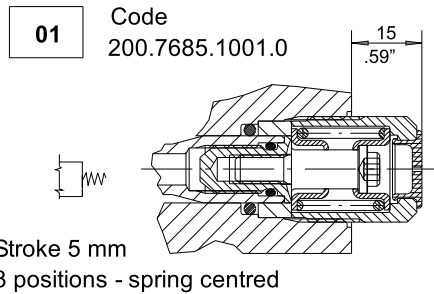
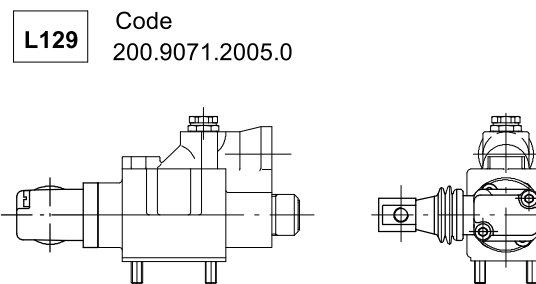
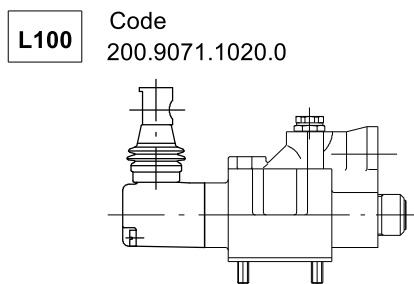


9.2.1 Spool positioner



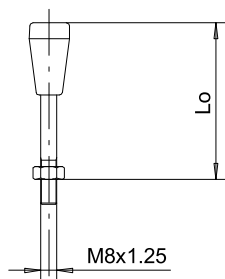
9	El. n.	Sectional valve body	Circuit	Posit.	Hand lever	Lever stick	Valves for sect. valve
1		H D 1 0 5 K 0 2	B	0 1			

9.2.2 Hand lever



9	El. n.	Sectional valve body	Circuit	Posit.	Hand lever	Lever stick	Valves for sect. valve
1		H D 1 0 5 K 0 2	B	0 1	L 1 0 0		

9.2.3 Lever stick



L ₀ Length	Type	Code
150 mm - 5.90 inches	AL001	200.7022.1019.0
200 mm - 7.87 inches	AL002	200.7022.1003.0
250 mm - 9.84 inches	AL003	200.7022.1005.0
300 mm - 11.80 inches	AL004	200.7022.1006.0

9	El. n.	Sectional valve body	Circuit	Posit.	Hand lever	Lever stick	Valves for sect. valve
1		H D 1 0 5 K 0 2	B	0 1	L 1 0 0	A L 0 0 1	

9.2.4 Preassembly code

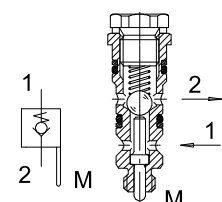
Directional control valves

HD105-K02-B-01-L100 Code: 200.0505.19.011

HD105-K02-B-92-L100 Code: 200.0505.19.005

Mechanical piloted check valve

Code: 200.9876.0176.0



For further information and options, see directional control valves catalogue chapter HDM140