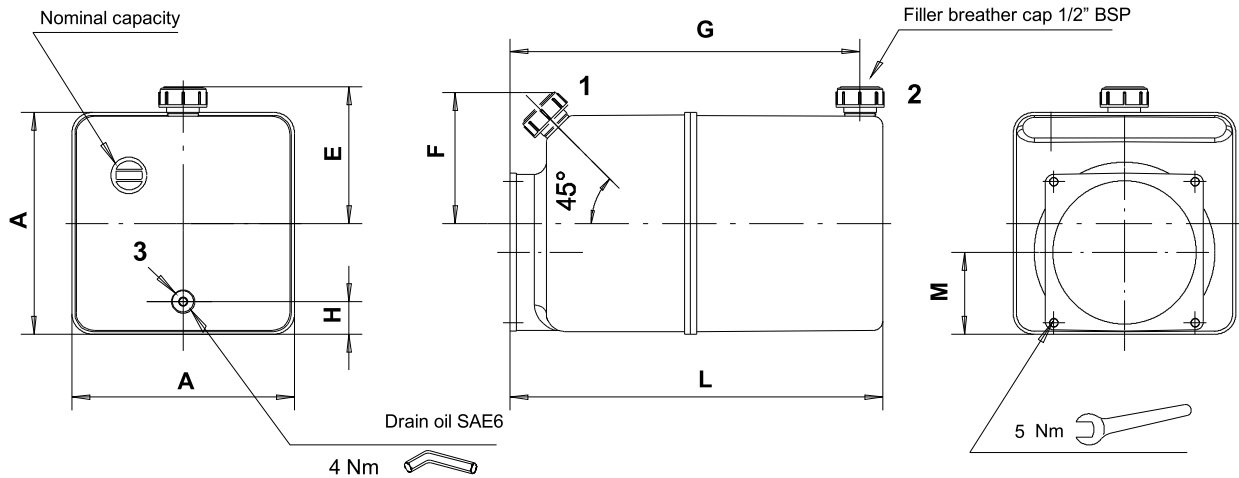


3.1.3 Square tanks from 6 up to 12 litres



Example

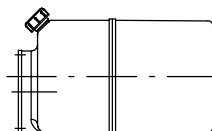
3	Tank				Fitting				Pos.				
	P	0	8	0	Q	-	A	B	T				

Tanks color standard is neutral translucent

Nom. Cap.	Type	Code	A		L		E		F		G		H		M	
			mm	inch	mm	inch	mm	inch	mm	inch	mm	inch	mm	inch	mm	inch
6 l	P-060Q-A BT	200.9734.9014.0	180	7.1	310	12.2			110	4.4	291	11.5	25	1.0	66	2.6
8 l	P-080Q-A BT	200.9734.5005.0	180	7.1	365	14.4			110	4.4	346	13.7	25	1.0	66	2.6
10 l	P-100Q-A BT	200.9734.6005.0	180	7.1	420	16.6			110	4.4	401	15.8	25	1.0	66	2.6
12 l	P-120Q-A BT	200.9734.9015.0	180	7.1	490	19.3			110	4.4	471	18.6	25	1.0	66	2.6
6 l	P-060Q-B BT	200.9734.9012.0	180	7.1	310	12.2	110	4.4			291	11.5	25	1.0	66	2.6
8 l	P-080Q-B BT	200.9734.5004.0	180	7.1	365	14.4	110	4.4			346	13.7	25	1.0	66	2.6
10 l	P-100Q-B BT	200.9734.6004.0	180	7.1	420	16.6	110	4.4			401	15.8	25	1.0	66	2.6
12 l	P-120Q-B BT	200.9734.9013.0	180	7.1	490	19.3	110	4.4			471	18.6	25	1.0	66	2.6
6 l	P-060Q-E BT	200.9734.9010.0	180	7.1	310	12.2			110	4.4	291	11.5	25	1.0	66	2.6
8 l	P-080Q-E BT	200.9734.5003.0	180	7.1	365	14.4			110	4.4	346	13.7	25	1.0	66	2.6
10 l	P-100Q-E BT	200.9734.6003.0	180	7.1	420	16.6			110	4.4	401	15.8	25	1.0	66	2.6
12 l	P-120Q-E BT	200.9734.9011.0	180	7.1	490	19.3			110	4.4	471	18.6	25	1.0	66	2.6
6 l	P-060Q-F BT	200.9734.9006.0	180	7.1	310	12.2	110	4.4			291	11.5	25	1.0	66	2.6
8 l	P-080Q-F BT	200.9734.5001.0	180	7.1	365	14.4	110	4.4			346	13.7	25	1.0	66	2.6
10 l	P-100Q-F BT	200.9734.6001.0	180	7.1	420	16.6	110	4.4			401	15.8	25	1.0	66	2.6
12 l	P-120Q-F BT	200.9734.9007.0	180	7.1	490	19.3	110	4.4			471	18.6	25	1.0	66	2.6

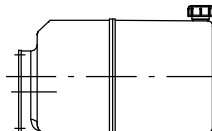
Horizontal/vertical mounting

P-0**Q-A BT*



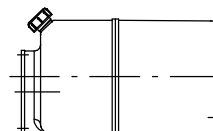
Filler at front (1)

P-0**Q-B BT



Filler at rear (2)

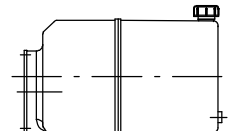
P-0**Q-E BT*



Filler at front (1)

Drain outlet (3)

P-0**Q-F BT



Filler at rear (2)

Drain outlet (3)

* (horizontal and vertical mounting)