

3.2 Metal tanks up to 18 litres

3.2.1 Technical information

Materials: Sheet metal.

Color: Black paint finish (Standard)

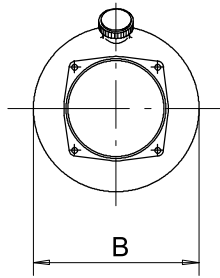
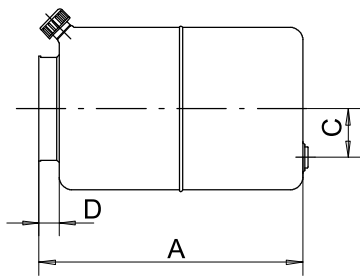
Condition of use: Suitable fluids: mineral oil based hydraulic fluids responding to ISO -DIN standards.

Operating temperature range: -15 / +80°C

Hydrocarbon based fluids (e.g. benzene, benzol, etc.) must not be used.

Versions: tanks are available in numerous versions, allowing installation of the power pack in different horizontal and vertical positions.

3.2.2 Tanks L050R-01, L080R-01

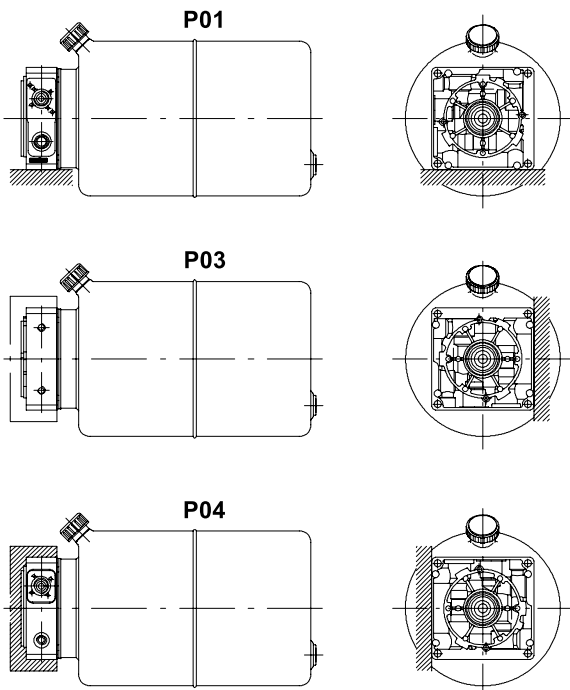


Example

	Tank						Fitting		Pos.				
3	L	0	8	0	R	-	0	1			P	1	5

Nom. Cap.	Type	Code	A		B		C		D		Oil filler cap	Oil drain plug
			mm	inch.	mm	inch.	mm	inch.	mm	inch.		
5 l	L050R-01	200.9724.4032.0	270	10.7	170	6.7	50	2	25	1.0	3/8" BSP	1/2" BSP
8 l	L080R-01	200.9724.5006.0	285	11.3	200	7.9	60	2.4	25	1.0	3/8" BSP	1/2" BSP

Horizontal assembling positions



Vertical assembling positions

