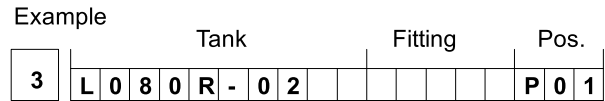
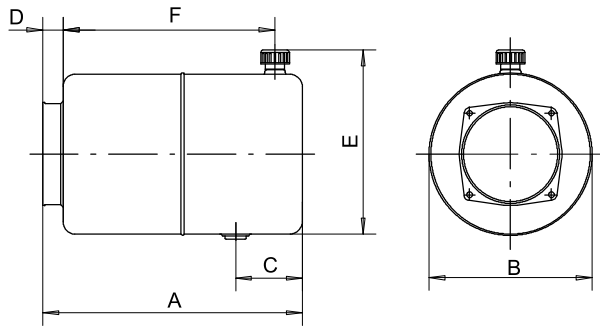
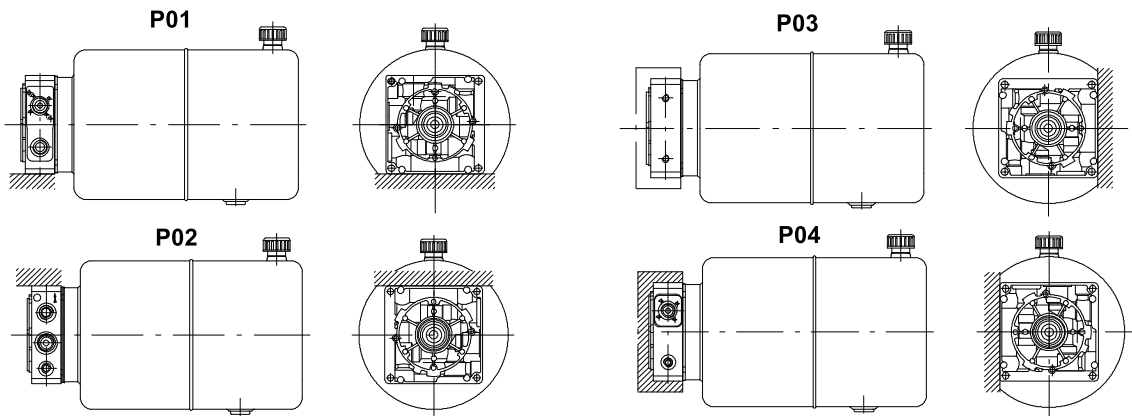


3.2.3 Tanks L050R-02, L080R-02



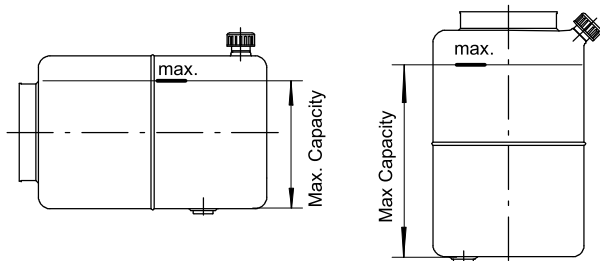
Nom. Cap.	Type	Code	A		B		C		D		E		F		Oil filler cup	Oil drain plug
			mm	inch	mm	inch	mm	inch	mm	inch	mm	inch	mm	inch		
5 l	L050R-02	200.9724.4001.0	270	10.7	170	6.7	50	2	25	1.0	195	7.7	212.5	8.4	3/8" BSP	1/2" BSP
8 l	L080R-02	200.9724.5001.0	285	11.3	200	7.9	60	2.4	25	1.0	228	9.0	225	8.9	3/8" BSP	1/2" BSP

Horizontal assembling positions



Filling capacity

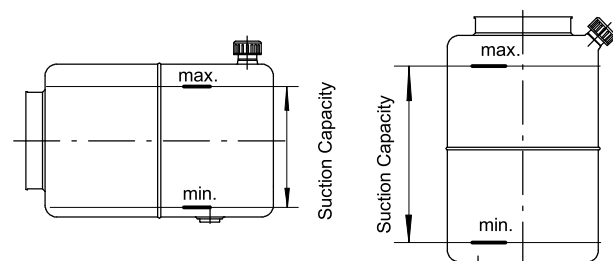
AP100/5 pump, standard suction assembly kit



Nominal capacity	Horizontal	Vertical	Type
5 l	4.9 l	4.7 l	L050R-01
5 l	4.9 l	—	L050R-02
8 l	7.5 l	7.0 l	L080R-01
8 l	7.5 l	—	L080R-02

Suction capacity

AP100/5 pump, standard suction assembly kit



Nominal capacity	Horizontal	Vertical	Type
5 l	4.4 l	4.4 l	L050R-01
5 l	4.5 l	—	L050R-02
8 l	7.0 l	6.0 l	L080R-01
8 l	7.0 l	—	L080R-02