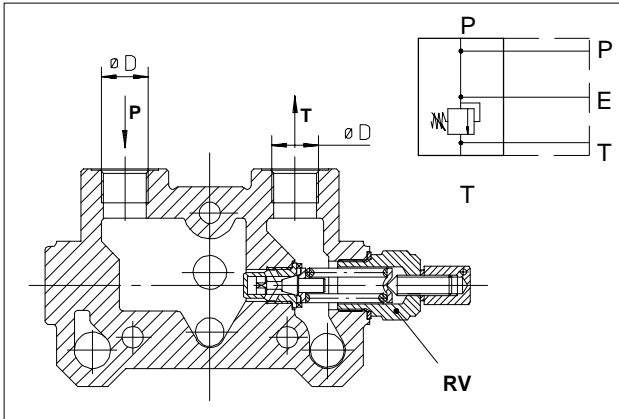
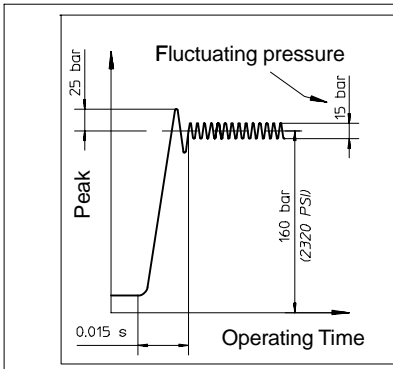


9A.4 Inlet and outlet covers

9A.4.1 Adjustable direct acting Relief Valve RV



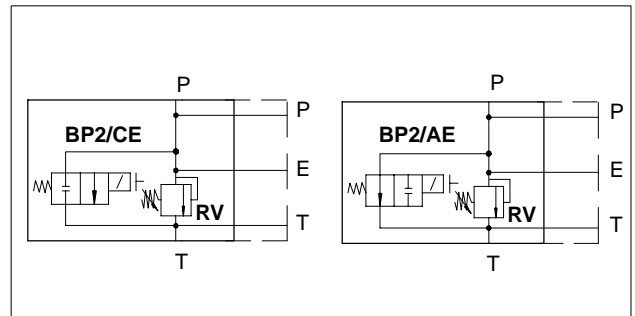
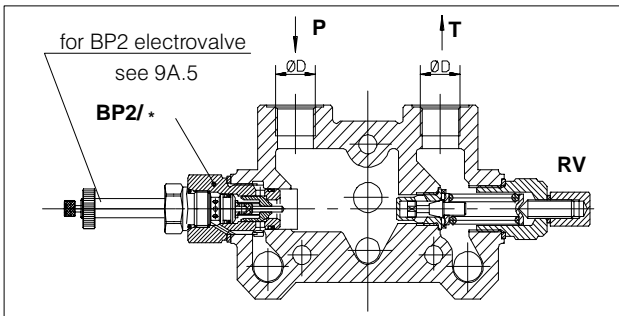
Inlet cover with P-T and RV		
Ø D	Parallel circuit (standard)	For series and tandem circuit
M18X1.5	T01 *200.9312.1007.0	T41 *200.9312.1005.0
3/8" BSP	T02 *200.9312.2006.0	T42 *200.9312.2005.0
1/2" BSP Standard	T03 *200.9312.3011.0	T43 *200.9312.3008.0
SAE10	T05 *200.9312.8002.0	T45 *200.9312.8001.0
* Group code with RV set at standard pressure 150 bar (2100 PSI)		



Relief valve set at 30 l/min (8 U.S.G.P.M.)

Pressure set range bar (PSI)	Std. setting bar (PSI)	Setting Code	Spring colour
30 - 95 (400 - 1300)	60 (860)	06	Yellow (YE)
96 - 210 (1300 - 3000)	150 (2100)	15	Green (GR)
211 - 320 (3000 - 4600)	260 (3700)	26	Blue (BL)

9A.4.2 Unloading solenoid valve BP2/CE and BP2/AE



9A.4.3 Inlet cover with P-T, RV, BY-PASS Solenoid Valve (without solenoid)

Parallel circuit				Series Circuit			
Ø D	By-pass solenoid valve circuit	Inlet cover type	Inlet cover group code	Ø D	By-pass solenoid valve circuit	Inlet cover type	Inlet cover group code
M18X1.5	BP2/AE BP2/CE	T21	200.9312.1015.0 200.9312.1016.0	M18X1.5	BP2/A BP2/C	T121	
3/8" BSP	BP2/AE BP2/CE	T22	200.9312.2018.0 200.9312.2019.0	3/8" BSP	BP2/A BP2/C	T122	
1/2" BSP Std	BP2/AE BP2/CE	T23	200.9312.3022.0 200.9312.3023.0	1/2" BSP Std	BP2/A BP2/C	T123	200.9312.3081.0 200.9312.3080.0
SAE10	BP2/AE BP2/CE	T25	200.9312.8007.0 200.9312.8008.0	SAE10	BP2/A BP2/C	T125	

Note: For availability of -T- inlet cover without ordering code please contact our Sales Department.