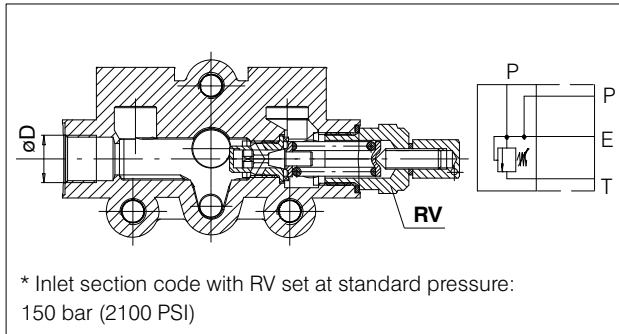


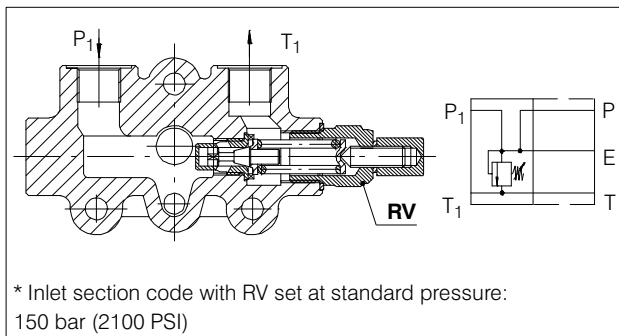
8A.4 Inlet and outlet covers

8A.4.1 Inlet manifold (standard) with P and RV



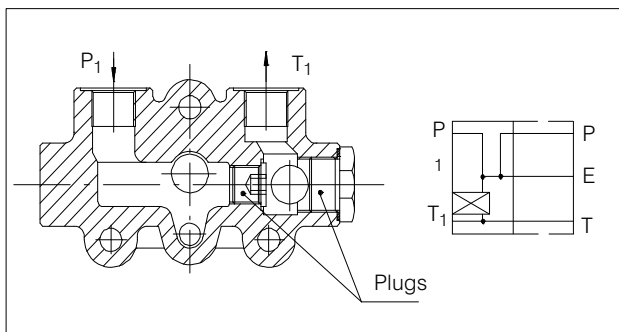
Ø D	Type	Code
SAE6	T06	* 200931060020
SAE8	T07	* 200931070030
3/8" BSP	T09	* 200931020020
M18X1.5	T10	* 200931010030

8A.4.2 Inlet manifold with P₁ - T₁ - RV



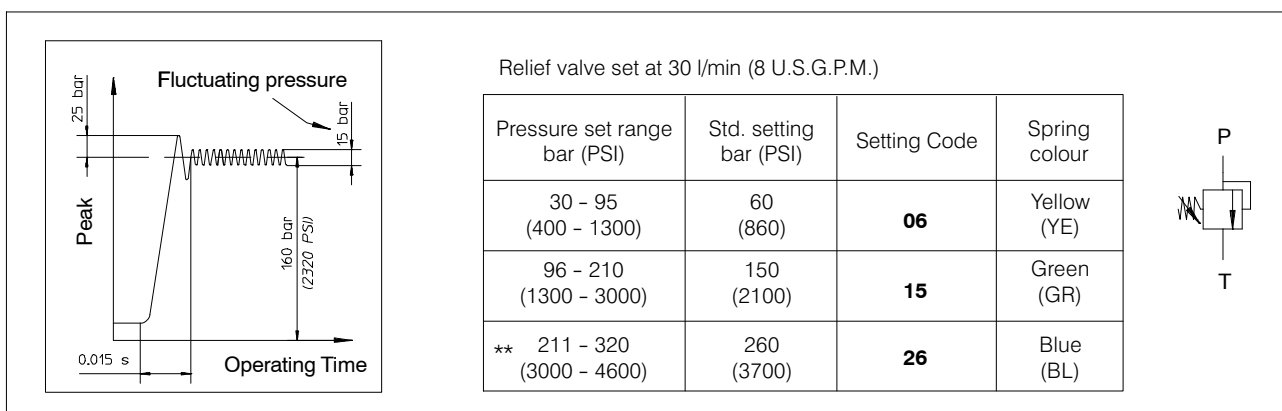
Ø D	Type	Code
SAE6	T11	* 200931060030
SAE8	T12	* 200931070020
3/8" BSP	T14	* 200931020030
M18X1.5	T15	* 200931010020

8A.4.3 Inlet manifold with P₁ - T₁



Ø D	Type	Code
SAE6	T16	200931060040
SAE8	T17	200931070050
3/8" BSP	T19	200931020040
M18X1.5	T20	200931010040

8A.5 Adjustable direct acting pressure Relief Valve RV



** The maximum operating pressure for each valve series is indicated in the "Technical specification" at the first page of each valve section.