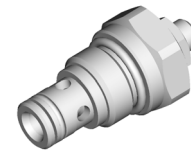
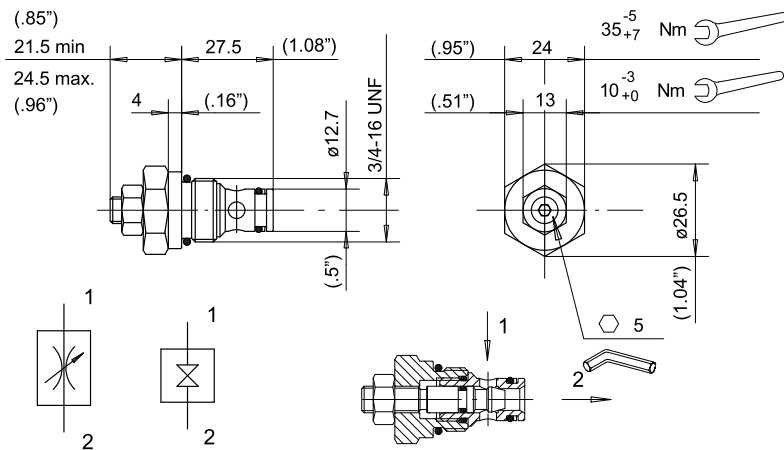


7.5 Manual override valves

7.5.1 Manual override valve: NV1/817-R

Manual override
 Flow restrictor
 Poppet type
 Flow from 1 to 2
 Code 200787601601

Max. pressure 230 bar
 Max. flow 25 l/min.
 Internal leakage 0-5 drops/min.
 Temperature range -20/+90 °C
 O-Ring replacement kit 200974200160
 Weight 0.110 Kg.



Oil: Viscosity 37 cSt at 40°C

Pressure drops with restrictor open

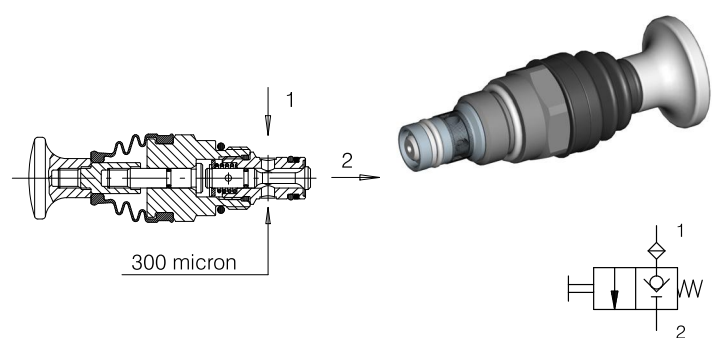
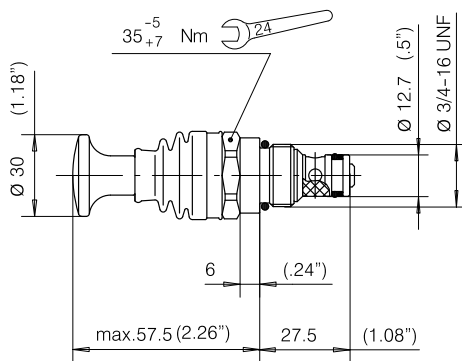


7.6 Directional valves

7.6.1 Directional valve: EPP817/22-TV

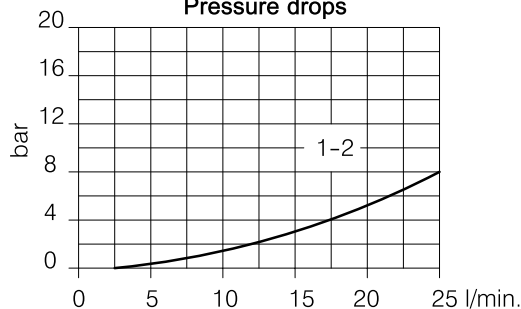
Manually operated
 Push to open
 Poppet type
 Flow from 1 to 2
 Max. pressure 230 bar

Max. Flow: 25 l/min.
 Internal leakage 0-5 drops/min.
 Temperature range -20/+90 °C
 O-Ring replacement kit 200974200160
 Weight: 0.140 Kg.



Oil: Viscosity 37 cSt at 40°C

Pressure drops



The **EPP817/...** comes complete with a knob allowing rapid operation, and a boot of plastic material to exclude dust, dirt, etc.

In this version, the knob is fitted with a stroke limiter to prevent possible damage to internal parts.

Type	Code
EPP817/22-TV	200787601680