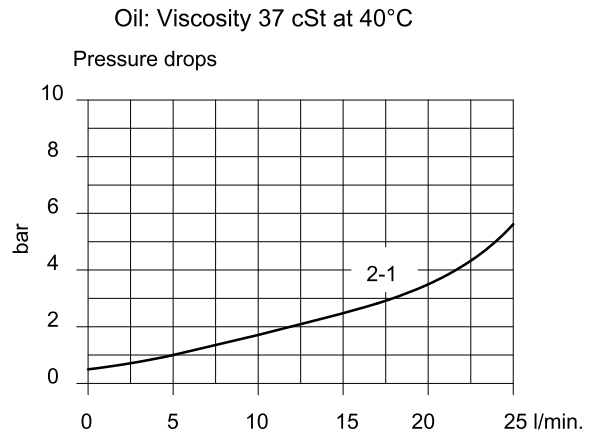
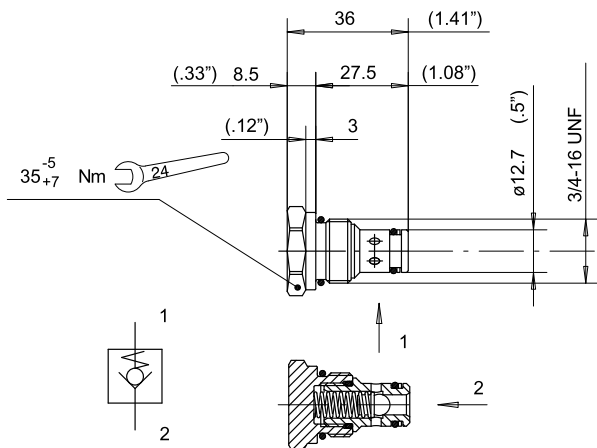


7.3 Check valves

7.3.1 Check valve: RS3/817

Ball type
Flow from 2 to 1
Code 200787601410
Max. pressure 230 bar

Max. flow: 25 l/min.
Cracking pressure 0.5 bar
Temperature range -20/+90 °C
O-Ring replacement kit 200974200160
Weight 0.040 Kg

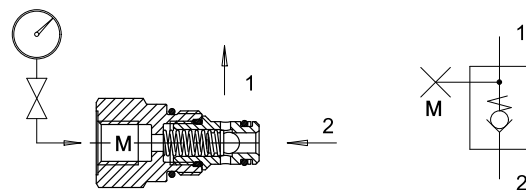
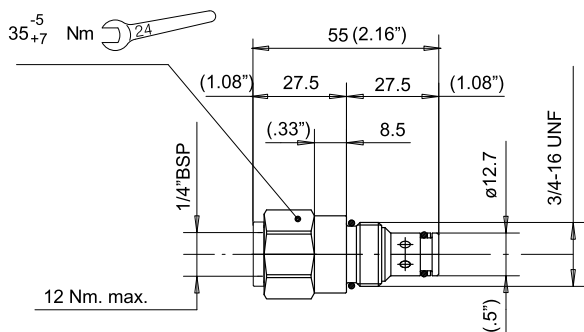


7.3.2 Check valve: RM3/817-A

Ball type
Flow from 2 to 1
Pressure through 1 and M

Max. pressure. 230 bar
Max. Flow: 25 l/min.
Cracking pressure 0.5 bar
Temperature range -20/+90 °C
O-Ring replacement kit 200974200160
Weight: 0.070 Kg

Code: 200787602160



Port M must be used only as a pressure outlet.
Normally supplied plugged.

Apply the prescribed tightening torque at port **M**.
Pressure drops: see RS3/817 performances