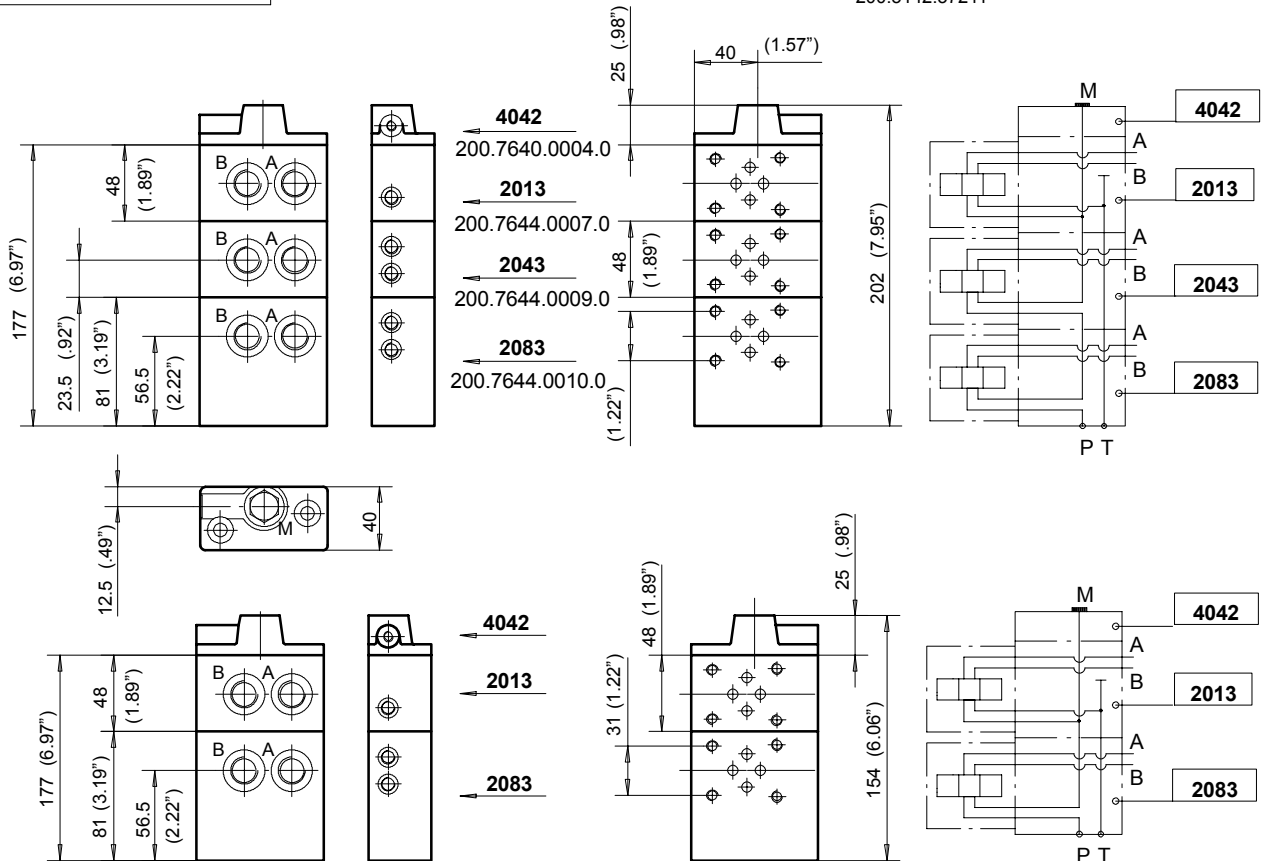
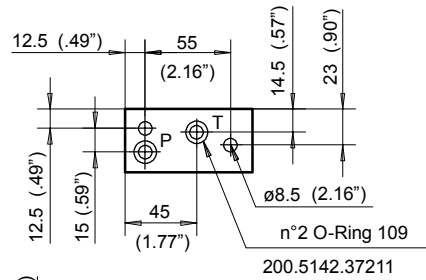
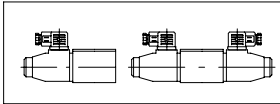


### 8.4 Series circuit - Suitable for solenoid valves DIN24350 FORM A CETOP R35H - ISO4401

A-B ports	3/8" BSP
Port M (plugged)	1/4" BSP



### 8.5 Series circuit - Circuit with more than three solenoid valves DIN24350 FORM A CETOP R35H - ISO4401

To obtain a hydraulic circuit with more than 3 solenoid valves (DIN24350 FORM A CETOP R35H - ISO4401) connected together, simply add one or more 2043 type manifolds as required.

The hydraulic diagram shows an arrangement with 4 solenoid valves

