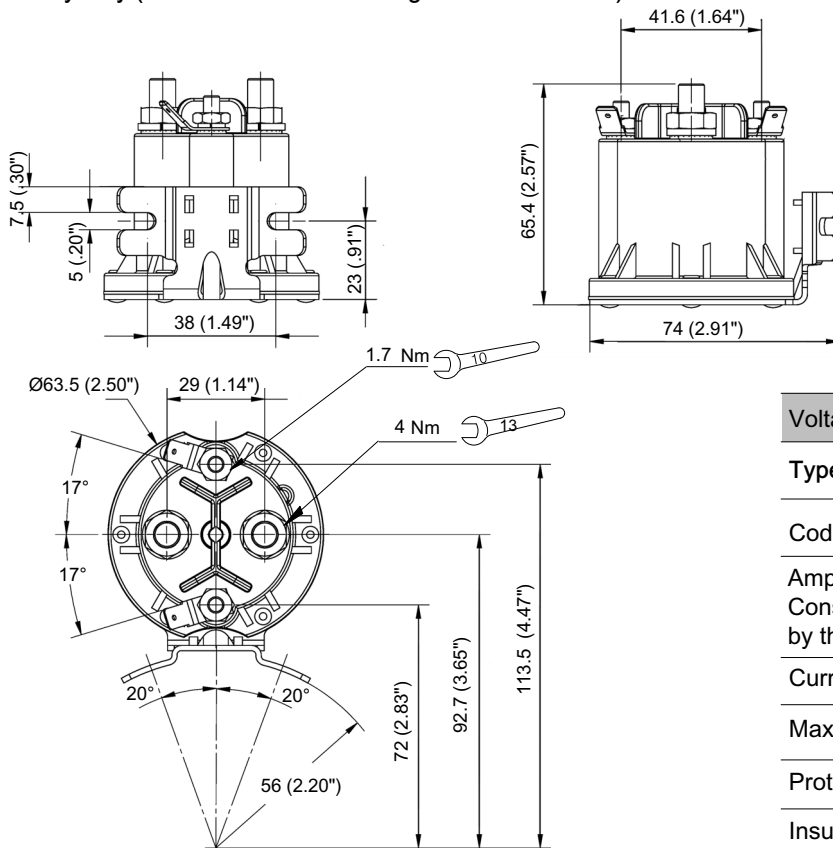
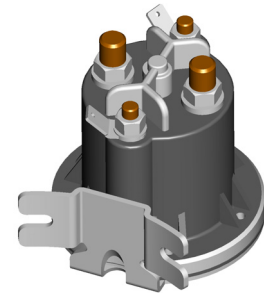
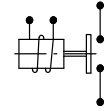


Heavy duty (STANDARD for wide range of DC el. motors)



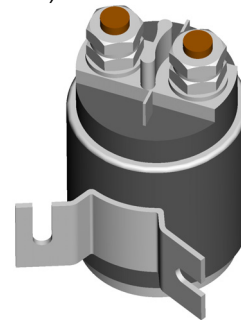
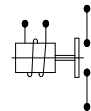
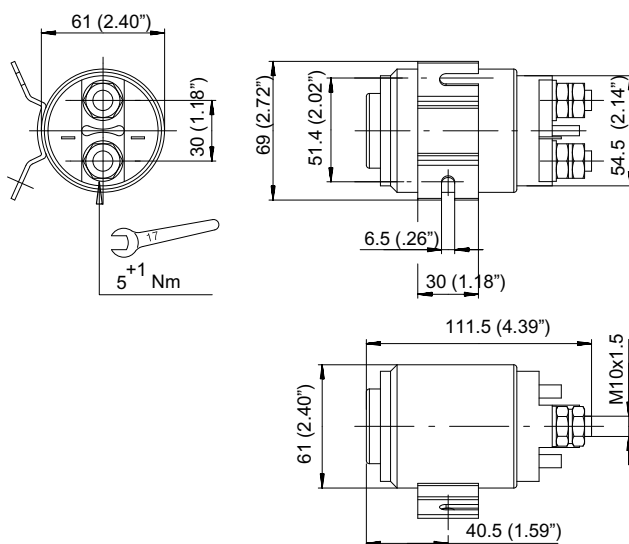
Weight: 0.37 kg



Voltage	12 V	24 V
Type	R109	R215
Code	200544134109	200544134215
Amps Consumption by the coil	2.2 A	1.2 A
Current for continuous duty		150 A
Max. current (5 sec.)		800 A
Protection index		IP66
Insulation class		F

Heavy duty (3000 W. el. motors)

Weight : 1.268 Kg (2.75 lb)



Voltage	24 V
Type	R212
Code	200544134212
Amps Consumption by the coil	1.1 A
Current for continuous duty	300 A
Protection index	IP42
Insulation class	B