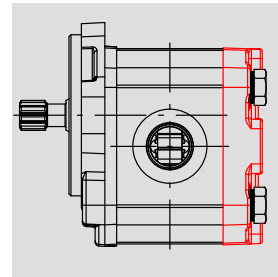
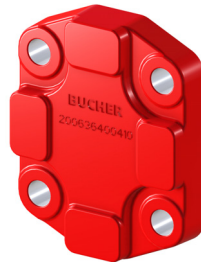
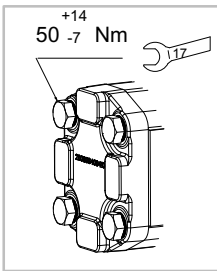
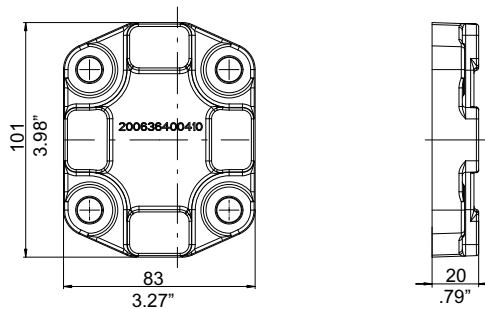


5.2 Sub-assembly back covers



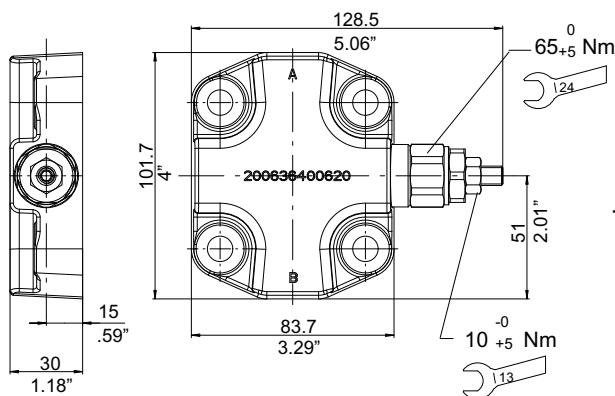
5.2.1 Cast iron back cover - Standard version for unidirectional pump



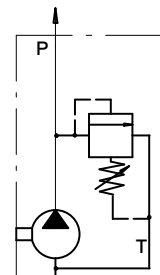
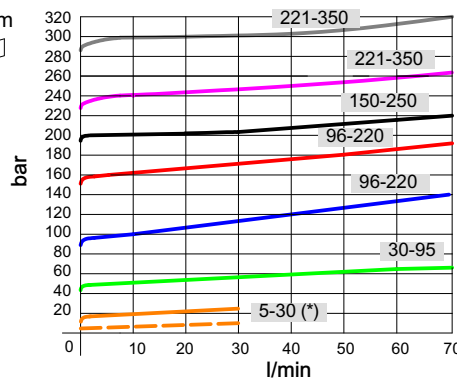
Type	Description	Ordering code
Back cover, standard version, cast iron material	GH	200636400421

5.2.2 Cast iron back cover with relief valve VI

It is necessary to order separated components body and valves (single codes are shown)

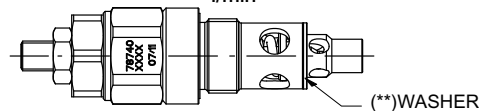


Pressure viscosity characteristic 46 cSt at 40°C



(**) Assembly instruction:

Check the correct position of the front copper washer and tighten with a torque wrench at the indicated value



Type	Setting range (bar)	Q max (l/min)	Cartridge valve ordering code only	Back cover ordering code only
- Cast iron back cover with relief valve. Return to internal pump suction - Cartridge pressure relief valve	5 ÷ 30	30 (*)	200987403600	200636400722
	30 ÷ 95	60	200987403480	
	96 ÷ 220	60	200987403420	
	150 ÷ 250	60	200987403470	
	221 ÷ 350	60	200987403430	

(*) see performances trace/minimum pressure setting (---)