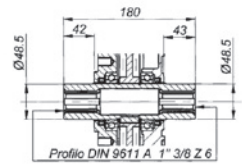
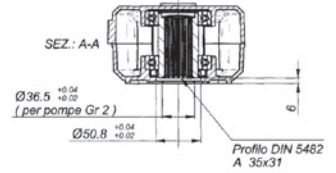
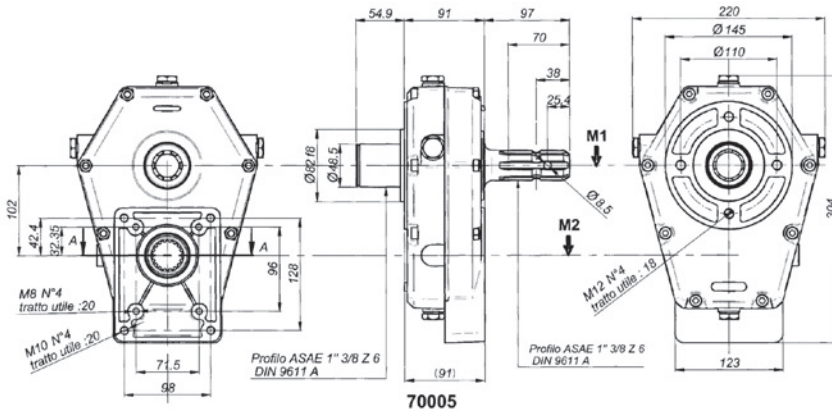
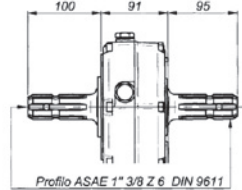




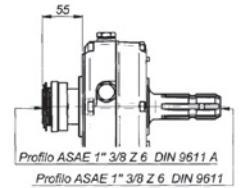
## SERIES 70000 PTO GEARBOX WITH THROUGH SHAFTS PUMP GROUP 3 • 20KW FLOWFIT



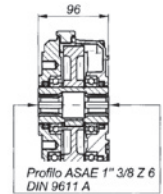
**70006**



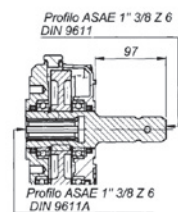
**70007**



**70008**



**70009**



**70011**

MAX OIL LEVEL 0.35 LITRE

M1 MAXIMUM CONTINUOUS TORQUE OF THE PTO GEARBOX (Input side daNm)	M2 MAXIMUM TORQUE OF THE PTO GEARBOX (Output side daNm)	N1 TRACTOR OUTPUT SPEED RPM	N2 FINAL OUTPUT SPEED OF PUMP/GEARBOX ASSEMBLY RPM	I RATIO OF SPEED INCREASE	KW MAX TRANSMITTABLE POWER	WEIGHT KG
31	31	540	540	1	20	9,5
38	26	540	810	1,5	20	9,5
43	21	540	1080	2	20	9,5
46	18	540	1408	2,5	20	9,5
49	16	540	1620	3	20	9,5
46	13	540	1836	3,5	20	9,5
43,7	11,5	540	2057	3,8	20	9,5

FACTORY PREFIX
34

PTO GEARBOX
70005
70006
70007
70008
70009
70011

RATIO AVAILABLE
1
1,5
2
2,5
3
3,5
3,8